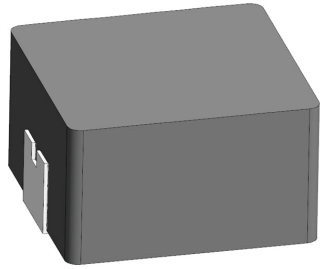


[Request Samples](#)
[Check Inventory](#)


FEATURES

- AEC-Q200 Qualified
- Shielded construction
- Soft saturation
- Low DCR per cubic mm
- Designed for switching frequencies between 100KHz-2MHz



ELECTRICAL SPECIFICATIONS @ 25°C

PART NUMBER*	INDUCTANCE (uH)	TOLERANCE (%)	IRMS (A)	ISAT (A)	DC RESISTANCE (mΩ)		TYPE
					TYP	MAX	
AMDLA4530Q-R10NT	0.10	30	32	32	1.8	2.1	Lead Frame
AMDLA4530Q-R12NT	0.12	30	30	30	2.0	2.3	Lead Frame
AMDLA4530Q-R22MT	0.22	20	18	17	2.8	3.2	Lead Frame
AMDLA4530Q-R35MT	0.35	20	16.5	15	4.6	5.1	Lead Frame
AMDLA4530Q-R47MT	0.47	20	16	11	5.5	6.4	Lead Frame
AMDLA4530Q-R68MT	0.68	20	12	9.0	7.0	8.4	Lead Frame
AMDLA4530Q-1R0MT	1.0	20	8.5	8.5	12.8	13.8	Lead Frame
AMDLA4530Q-1R2MT	1.2	20	7.2	7.6	14	16	Lead Frame
AMDLA4530Q-1R5MT	1.5	20	6.6	6.3	16	21	Lead Frame
AMDLA4530Q-2R2MT	2.2	20	6.0	5.7	23	27.6	Lead Frame
AMDLA4530Q-3R3MT	3.3	20	5.5	5.0	30	36	Lead Frame
AMDLA4530Q-4R7MT	4.7	20	5.0	4.0	43	52	Lead Frame

* Please refer to Part Identification section

Test Conditions

Inductance: 100 kHz, 1V, 0 Adc
 Humidity Range: 85 ± 2% RH
 Temperature Rise Current: Current measured at Δ T of 40°C
 Saturation Current: Current measured at Δ L of 30%

GENERAL SPECIFICATIONS

Operating Temperature:
 -55°C to +155°C with (40°C rise) Irms current.

Maximum Part Temperature: +155°C
Components Storage Temperature:
 -55°C to +125°C

Tape and Reel Packaging
Temperature: -55°C to +80°C

MSL: Level 1

MATERIALS

Core: Metal Alloy
Wire: Copper
Terminal: Tin Plating
Ink: Black

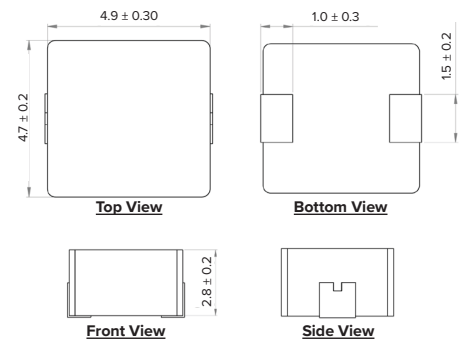
PART BUILDER



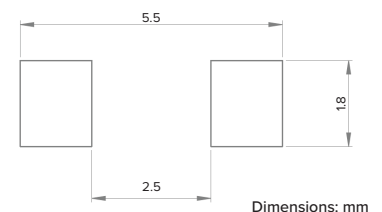
1. Tolerance: M = 20%
 N = 30%
2. Packaging: B = Bulk
 T = Tape and Reel (1,000pcs/reel)

*Refer to Electrical Specification table

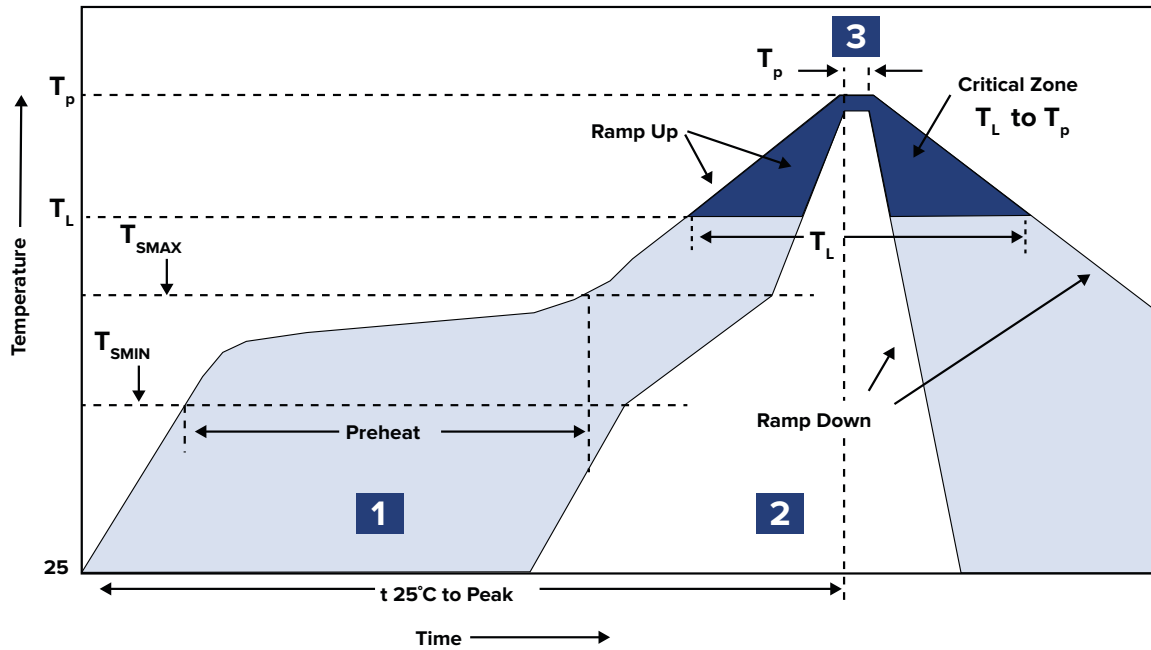
PRODUCT DIMENSIONS



RECOMMENDED LANDING PATTERN



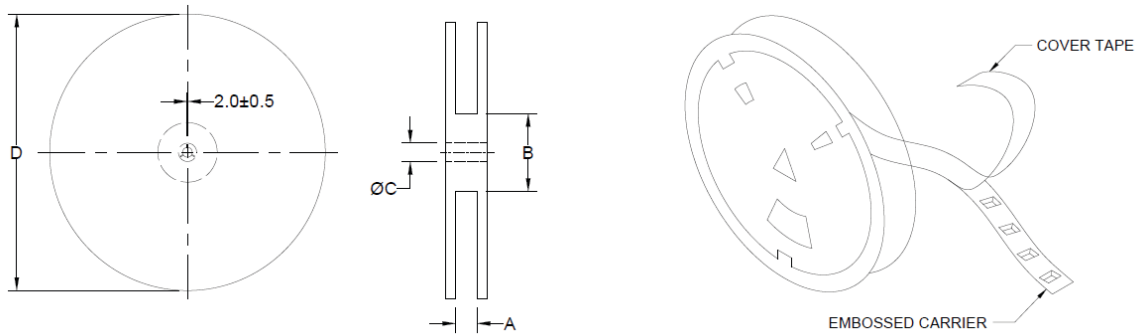
RECOMMENDED REFLOW PROFILE



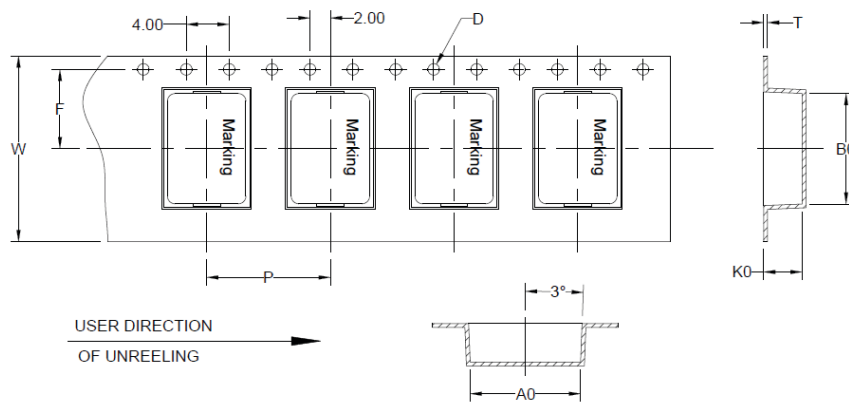
ZONE	DESCRIPTION	TEMPERATURE	TIMES
1	Preheat	$T_{smin} \sim T_{smax}$ 150°C ~ 200°C	60 ~ 180 sec.
2	Reflow	T_L 217°C	60 ~ 150 sec.
3	Peak Heat	T_p 260°C	10 sec. MAX

PACKAGING

Tape and Reel: 1,000
 Units per Carton: 8,000
 T&R per Carton: 8
 Weight per Carton: 7.9 kg
 Weight per Unit: 0.34 g
 Carton Dimensions: 410 x 325 x 415 mm



TYPE	A	B	C	D
13" x 16 mm	16.4 +2/-0	100.0 ± 2.0	13.0 +0.5/-0.2	330.0



B ₀	A ₀	K ₀	P	W	F	T	D
5.3 ± 0.1	5.0 ± 0.1	3.3 ± 0.1	12.0 ± 0.1	16.0 ± 0.3	5.5 ± 0.1	0.35 ± 0.05	1.5 ± 0.1

Dimensions: mm

This product is commercial off-the-shelf (COTS) and not specifically designed for automotive, military, aviation, aerospace, implantable, life-dependent medical or safety applications. This product is not recommended for use in any application requiring high reliability in which component failure could result in loss of life and/or property damage without prior written approval from Abracon. Specifications are subject to change without notice. Contact Abracon for more information.

Mouser Electronics

Authorized Distributor

Click to View Pricing, Inventory, Delivery & Lifecycle Information:

ABRACON:

[AMDLA4530Q-1R0MT](#) [AMDLA4530Q-2R2MT](#) [AMDLA4530Q-3R3MT](#) [AMDLA4530Q-4R7MT](#) [AMDLA4530Q-1R2MT](#)
[AMDLA4530Q-1R5MT](#) [AMDLA4530Q-R10NT](#) [AMDLA4530Q-R12NT](#) [AMDLA4530Q-R22MT](#) [AMDLA4530Q-R35MT](#)
[AMDLA4530Q-R47MT](#) [AMDLA4530Q-R68MT](#)