

PROTECT YOUR MISSION-CRITICAL IT EQUIPMENT

ALERTWERKS™ SERVESENSOR MONITORING HUBS AND INTELLIGENT SENSORS

1.877.877.2269



[BLACKBOX.COM/ALERTWERKS](https://blackbox.com/alertwerks)

PROTECT YOUR MISSION-CRITICAL IT EQUIPMENT AGAINST PHYSICAL THREATS – FROM TEMPERATURE EXTREMES TO WATER DAMAGE

WHAT'S AN ENVIRONMENTAL MONITORING SYSTEM?

Environmental monitoring products enable you to actively monitor the conditions in your rack, server room, data center or anywhere else you need to protect critical assets. Use it for remote monitoring and management of a wide range of devices such as HVAC systems, security equipment, UPSs, generators, and industrial equipment. Conditions monitored include extreme temperatures, humidity, power spikes and surges, water leaks, smoke and chemical materials. With proper environmental monitoring, you're alerted to any conditions that could have an adverse effect on your mission-critical equipment. These products can also alert you to potential damage from human error, hacking or prying fingers.

Environmental monitors consist of three main elements: a base unit or hub, probes or sensors and network connectivity and integration. The hubs may contain one or more built-in sensors, as well as ports for hooking up external probes. They also include an Ethernet port and have software for remote configuration and graphing. This software may also work with existing network management software, such as SNMP systems.

FEATURES

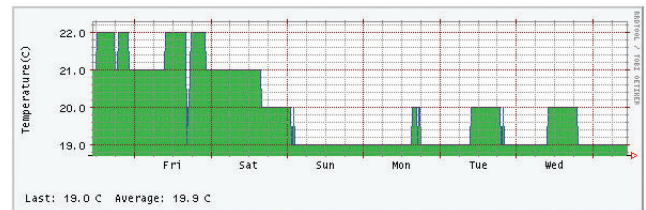
Data measurement (see chart)

The environmental monitoring appliance displays the values measured by the attached probes, e.g. temperature, humidity, airflow, status of dry contact, door, motion detector and other sensors.

Temp Rack 03	66°F (19°C)
Humidity Rack 03	34%

Data collecting and graphing (see chart below)

The measurements are periodically stored in the internal memory or external storage media and displayed as graphs.



Alerts and notifications

When the measured value exceeds the predefined threshold, it triggers an alert: a blinking LED on the front panel, an audible alarm, SNMP trap, email, etc. The environmental monitoring appliance can also activate an external alarm system like a siren or strobe light.

Easy setup and management

Simple, accurate and rugged, the environmental monitoring appliance is ready to run right out of the box. Plug the probes into the RJ-45 ports and they automatically configure and go online, ready to report any status change.

Web-based management interface

A Java™-based web UI enables access to the hubs over any IP network – even the internet.

BENEFITS

- Reduced downtime and increased equipment reliability
- Reduced OPEX
- Increased employee satisfaction

APPLICATIONS

From data center device monitoring, to security footage broadcast over the internet, to remote management of proprietary equipment where physical access is difficult, environmental monitoring applications are essential to generating information about the conditions that affect your mission-critical IT equipment.



DATA CENTERS



INDUSTRIAL & MANUFACTURING



ENERGY



OIL & GAS



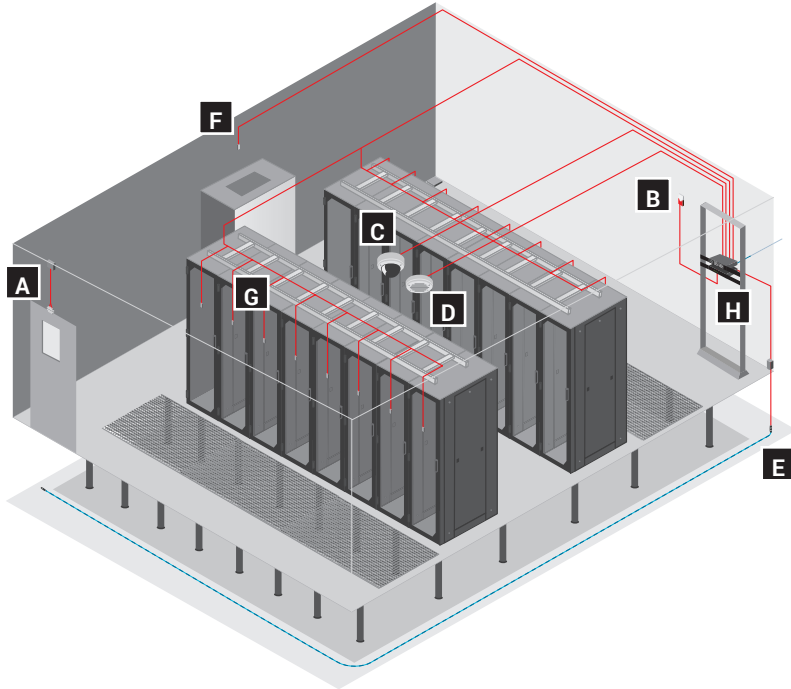
HEALTHCARE



GREENHOUSES



MONITORING HUBS AND INTELLIGENT SENSORS



KEY	DESCRIPTION
A	Door Sensor
B	Siren and Strobe Light
C	Camera
D	Smoke/Fire
E	Rope Water
F	Dual Temperature/Humidity
G	Front-Rear Temperature String
H	AlertWerks Hub

SELECTION GUIDE | ALERTWERKS™ SERVSSENSOR HUB FEATURES

	SERVSSENSOR JUNIOR	SERVSSENSOR	SERVSSENSOR CONTACT	SERVSSENSOR V4E LITE	SERVSSENSOR V4E	SERVSSENSOR PLUS
Features						
Intelligent sensors supported (maximum)	2	2/4/8	8	8/500*	8/500*	4/8/64
Dry contacts supported (maximum)	10†	2/4/8	28 ‡	20/500*	20/60/500*	128
Cameras supported (maximum)	–	–	–	–	4	–
Notifications						
Relay control	✓	✓	✓	✓	✓	✓
Siren and strobe light	✓	✓	✓	✓	✓	✓
SNMP trap	✓	✓	✓	✓	✓	✓
E-mail	✓	✓	✓	✓	✓	✓
SMS	✓§	✓§	✓§	✓§	✓§	✓§
Skype® call	–	–	–	✓	✓	✓
FTP upload	–	–	–	✓	✓	✓
Picture log	–	–	–	–	✓	–
Wakeup/shutdown	–	–	–	✓	✓	✓
Code	EME102A-R2 EME103A-R2 EME104A-R2 EME152A, EME153A EME154A	EME105A, EME106A EME108A-R2 EME109A-R2 EME110A-R2 EME155A	EME111A-20-R2 EME112A-20-R2 EME113A-20-R2	EME144A-R2 EME149A-20	EME134A-R3	EME161A EME164A EME168A

* Requires expansion hubs.

† With two 5-dry contact input cables and license.

‡ 20 dry contacts, plus eight RJ-45 sensor ports.

§ Requires e-mail to SMS gateway.



ENVIRONMENTAL, POWER & SECURITY MONITORING

ALERTWERKS™ SERVSSENSOR PLUS (page 5) High-speed, intelligent environmental monitoring system

- Support four to eight intelligent sensors
- Modular design, 1U mounting
- Front and rear thermal mapping for any server cabinet
- Optional LCD display

ALERTWERKS™ SERVSSENSOR V4E, V4E LITE (page 5) Real-time, extensive environmental and video monitoring and alerting system

- Support up to eight plug-and-play intelligent sensors
- Can be daisy-chained to expansion hubs, increasing the total sensor count up to 500
- V4E model supports up to four surveillance cameras

ALERTWERKS™ SERVSSENSOR (page 6) Functions as a central hub for your AlertWerks Intelligent Sensors

- Feature four or eight RJ-45 ports; AlertWerks Intelligent Sensors sold separately or in kit
- EME155A supports 802.3af PoE distribution

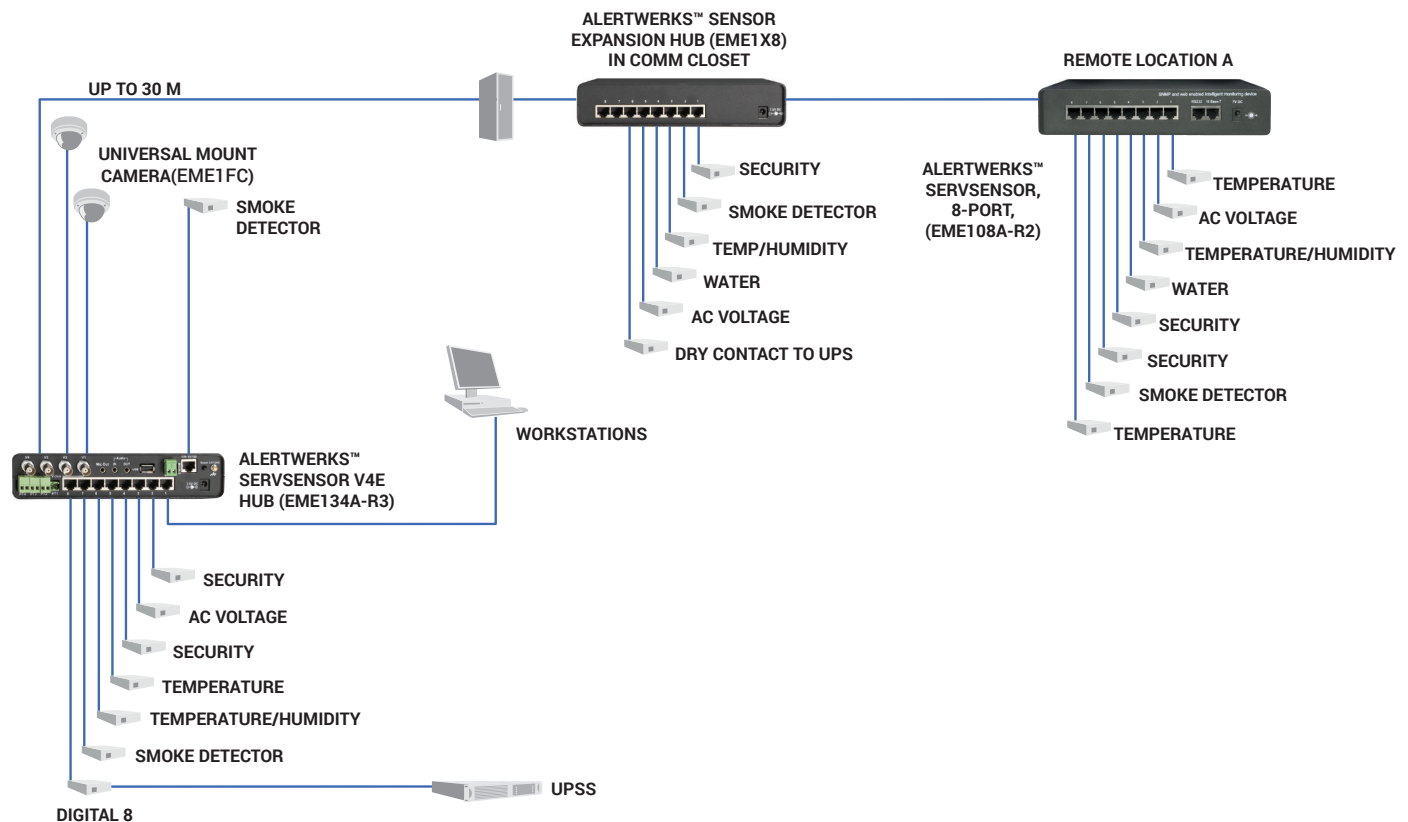
ALERTWERKS™ SERVSSENSOR JUNIOR (page 6) Ideal for areas with limited space, such as wiring closets

- Functions as a central hub for up to two intelligent sensors
- EME152A, EME153A and EME154A models feature 802.3af PoE PD

ALERTWERKS™ SERVSSENSOR CONTACT (page 6) Safeguard equipment and devices that use dry contact outputs to send alarm signals

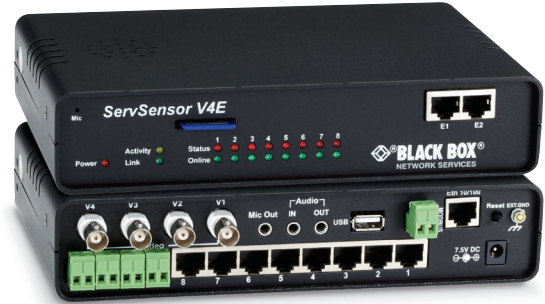
- Eight autosensing RJ-45 ports for connecting AlertWerks Intelligent Sensors
- Additional 20 dry contacts to support third-party sensors

ALERTWERKS SETUP





EME168A



EME134A-R3

ALERTWERKS™ SERVSSENSOR PLUS

Configuration	Software utility for IP setup, then over web browser
Encryption	SL 128 bit (HTTPS), SNMPv3
Environmental	Temperature: -31 to 158° F (-35 to +70° C); Humidity: 20 to 80%, noncondensing
Monitoring and Alarms	Via web browser, email, SNMP trap
Security	SNMPv3
Protocols Supported (Client)	DHCP, SMTP, (S) NTP, SNMP
CE Approval	Yes
Connectors	All: (1) RJ-45 Ethernet 10/100 port; EME164A, EME168A: Basic Expansion Bus (BEB) connector; EME164A, EME161A also: (4) RJ-45 sensor ports; EME168A also: (8) RJ-45 sensor ports
Expansion Port	(1) EXP port for connecting EME164A or EME168A remote units
Power	All: 5 VDC, 3A
Size	EME164A, EME168A: 1.6"H x 18.7"W x 1.9"D (4.1 x 47.5 x 4.9 cm); EME161A: 1.3"H x 4.5"W x 2.5"D (3.2 x 11.4 x 6.4 cm)

ALERTWERKS™ SERVSSENSOR V4E, V4E LITE

Audio	Sampling rate: 8 kHz
Configuration	Via web browser (HTTP / HTTPS)
Encryption	SL 128 bit (HTTPS), SNMPv3
Environmental	Temperature: 32 to 131° F (0 to 55° C); Humidity: 20 to 80%, noncondensing; Altitude: 0 to 3000 m
Memory	EME134A-R3: 64 MB SDRAM, 128 MB NVRAM; EME144A-R2, EME149A-20: 128 MB SDRAM, 128 MB NVRAM
Operating System	Embedded Linux
Protocols Supported (Client)	DHCP, DNS, SMTP, (S) NTP, SNMP
Video	EME134A-R3: Sampling resolution: Up to 640 x 480 dpi Frame rate: Up to 30 fps Color depth: Up to 16 bit Streaming refresh rate: Up to 15 fps @ 320 x 240 dpi
CE Approval	Yes
Connectors	All: (8) RJ-45 sensor, (1) RJ-45 10/100BASE-TX Ethernet, (1) USB Type A, (1) 2-pin RS-485; EME134A-R3 also: (4) BNC F video, (3) 3.5-mm audio jacks, (4) 2-pin RS-485 PTZ, (1) DB9 M RS-232/V.24 console port; EME149A-20 also: (20) 2-pin dry contacts
Power	Autosensing 100– 240 VAC, 47–63 Hz external power supply
Size	EME134A-R3: 4.6 H x 27.7 W x 13.7 D cm (4.6 x 70.5 x 13.8 cm) EME144A-R2: 1.8"H x 8.5"W x 5.4"D (4.6 x 21.6 x 13.8 cm) EME149A-20: 1.8"H x 17.08"W x 5.43"D (4.6 x 43.4 x 13.8 cm)

ARTICLE # DESCRIPTION

EME161A	4-Port with Ethernet/LAN Interface
EME164A	4-Port with Ethernet/LAN, Modbus/RS-485 and Expansion Bus Interfaces
EME168A	8-Port with Ethernet/LAN, Modbus/RS-485 and Expansion Bus Interfaces

ARTICLE # DESCRIPTION

EME134A-R3	ServSensor V4E, 8 sensors + 4 video inputs
EME144A-R2	ServSensor V4E Lite, No Video, No Dry Contacts
EME149A-20	ServSensor V4E Lite, No Video, 20 Dry Contacts
EME1X8	ServSensor Expansion Units, 8-Port Sensor Hub
EME1P8	ServSensor Expansion Units, 8-Port Relay Hub
EME1DC16	ServSensor Expansion Units, 16-Port Dry Contact Hub



ENVIRONMENTAL, POWER & SECURITY MONITORING



EME108A-R2



EME102A-R2

ALERTWERKS™ SERVSSENSOR

Configuration	Software utility for IP setup, then over web browser
Environmental	Temperature: EME108A-R2, EME110A-R2, EME158A: 32 to 104° F (0 to 40° C); EME105A, EME106A, EME155A: -31 to +176° F (-35 to +80°); Humidity: EME108A-R2, EME110A-R2: 30 to 70% noncondensing; EME105A, EME106A, EME155A: 20 to 80% noncondensing
Monitoring and Alarms	Via web browser, email, SNMP trap
Security	User/administrator password-protected login
CE Approval	Yes
Connectors	EME108A-R2, EME110A-R2: (8) RJ-45 sensor ports, (1) 10BASE-T Ethernet port; EME105A, EME106A, EME155A: (4) RJ-45 sensor ports, (1) 10BASE-T Ethernet port
Power	EME108A-R2–EME110A-R2: 90–260 VAC, 47–63 Hz autosensing external power supply; EME105A–EME106A: 100–240 VAC, 50–60 Hz autosensing external power supply; EME155A: 100–240 VAC, 50–60 Hz autosensing external power supply or via 802.3af PoE
Size	EME108A-R2–EME110A-R2: 1.8"H x 9.2"W x 5.4"D (4.6 x 23.4 x 13.8 cm); EME105A–EME106A, EME155A: 1.8"H x 8.5"W x 5.4"D (4.6 x 21.6 x 13.7 cm)

ARTICLE # DESCRIPTION

EME108A-R2	ServSensor, 8-Port, No Sensor
EME109A-R2	ServSensor, 8-Port, (1) Temperature Sensor (Kit)
EME110A-R2	ServSensor, 8-Port, (1) Dual Temperature and Humidity Sensor (Kit)
EME105A	ServSensor, 4-Port, No Sensor
EME155A	ServSensor, 4-Port with PoE, No Sensor
EME106A	ServSensor, 4-Port, (1) Dual Temperature and Humidity Sensor (Kit)

ALERTWERKS™ SERVSSENSOR JUNIOR

Configuration	Software utility for IP setup, then over web browser
Environmental	Temperature: 32 to 104° F (0 to 40° C); Humidity: 30 to 70% noncondensing
Monitoring and Alarms	Via web browser, email, SNMP trap
Security	User/administrator password-protected login
Protocols Supported (Client)	DHCP, DNS, SMTP, (S) NTP, SNMP
CE Approval	Yes
Connectors	(2) RJ-45 sensor ports; (1) 10/100 Ethernet port
Power	EME102A-R2–EME104A-R2: 90–260 VAC, 47–63 Hz autosensing external power supply; EME152A–EME154A: 100–240 VAC, 50–60 Hz autosensing external power supply or via 802.3af PoE
Size	1.3"H x 4.5"W x 2.5"D (3.2 x 11.4 x 6.4 cm)

ARTICLE # DESCRIPTION

EME102A-R2	2-Port, No Sensor
EME103A-R2	2-Port, (1) Temperature Sensor (Kit)
EME104A-R2	2-Port, (1) Dual Temperature and Humidity Sensor (Kit)
EME152A	2-Port, No Sensor, with PoE
EME153A	2-Port, (1) Temperature Sensor (Kit), with PoE
EME154A	2-Port, (1) Dual Temperature and Humidity Sensor (Kit), with PoE
EME1DC-015	Dry Contacts for ServSensor Junior, 5 Inputs, 15-ft Cable (Requires EME1DC-UPG, below)
EME1DC-UPG	Activation Key for ServSensor Junior Dry Contacts

ALERTWERKS™ SERVSSENSOR CONTACT

Configuration	Software utility for IP setup, then over Web browser
Environmental	Temperature: 32 to 131° F (0 to 55° C); Humidity: 20 to 80%, noncondensing
Monitoring and Alarms	Via web browser, email, SNMP trap
Security	User/administrator password-protected login
Protocols Supported (Client)	DHCP, DNS, SMTP, (S) NTP, SNMPv1
Connectors	EME111A-20-R2, EME112A-20-R2, EME113A-20-R2: (8) RJ-45 sensor ports; (20) dry contacts; (1) RJ-45 10BASE-T Ethernet port
Power	100–240 VAC, 47–63 Hz autosensing external power supply
Size	1.7"H x 18"W x 5"D (4.2 x 45.7 x 12.7 cm)



EME111A-20-R2

ARTICLE # DESCRIPTION

EME111A-20-R2	8-Port, 20 Dry Contacts without Sensors
EME112A-20-R2	8-Port, 20 Dry Contacts with Temperature Sensor
EME113A-20-R2	8-Port, 20 Dry Contacts with Temperature/Humidity Sensor





EME1FC-PAL

ALERTWERKS™ CAMERAS

High-resolution 1/3" Sony™ CCD cameras

- Stationary universal-mount cameras, providing clear, sharp pictures, even in low light conditions

Audio	Sampling rate: 8 kHz
Engine	Image sensor: Type: 1/3" Interline CCD; Min. illumination: 0.5 Lux / F1.2; Picture elements: 640(H) x 480(V)
Environmental	Temperature: 32 to 104° F (0 to 40° C); Humidity: 10–80% relative humidity, noncondensing
Opticals	Lens type: fixed; Focal length: 3.6 mm; Viewing angle: 92°; Video resolution: 330 TV lines; Features: auto white balance, electronic iris 1/50 to 1/100,000; P/T: Pan movement: 0 to 330°; Tilt movement: 0 to 80°
Video Standard	EME1FC-NTSC: NTSC, EME1PC-PAL: PAL
CE Approval	Yes
Interface	Standard BNC or RCA (for best results, use BNC connectors and RG-6 coaxial cable)
Connectors	Video: (1) BNC M Composite video, (1) Power input
Power	9-VDC external power supply, IEC adapter and EU, U.K., U.S. or Australia power cord
Size	2.6"H x 3.5" dia. (6.5 x 8.8 cm)
Weight	1.1 lb.(0.5 kg)

ARTICLE #	DESCRIPTION
EME1FC-NTSC	Universal Mount Camera, NTSC
EME1FC-PAL	Universal Mount Camera, PAL



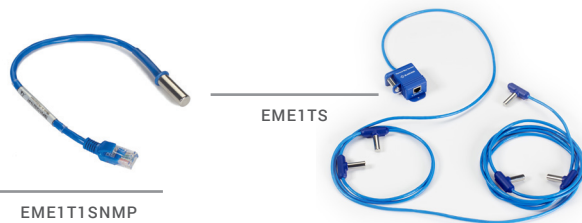
EME1LCD

ALERTWERKS™ LCD DISPLAY

Programmable LCD display for sensor data

- Works only with ServSensor Plus Hubs
- Display sensor readings for up to eight sensors
- Can be programmed to show data from any Intelligent or virtual sensor
- Built-in temperature sensor

ARTICLE #	DESCRIPTION
EME1LCD	AlertWerks LCD Display, with Temp. Sensor



EME1T1SNMP

EME1TS

ALERTWERKS™ TEMPERATURE SENSORS

Ensures a correct temperature reading up to 100 feet

- Never needs calibration
- Includes one plastic mounting clip

ARTICLE #	DESCRIPTION
EME1T1SNMP	Temperature Probe with 1-ft. (0.3-m) Cable
EME1T5SNMP	Temperature Probe with 5-ft. (1.5-m) Cable
EME1TS	Temperature (6) Sensor String with 20-ft. (6-m) Cable

EMERW-020-R2



ALERTWERKS™ WATER SENSORS

Alerts you to water in your data center

- Accurate enough to measure distilled water

ARTICLE #	DESCRIPTION
ALERTWERKS SPOT WATER SENSORS	
EME1W1-015	15-ft. (4.5-m) Cable
ALERTWERKS ROPE WATER SENSOR	
EMERW-020-R2	20-ft. (6.0-m) Cable
EMERWE-010-R2	10-ft. (3.0-m) Extension



EME1FL-015

ALERTWERKS™ ULTRASONIC FUEL LEVEL SENSOR

Monitors liquid levels in a tank

- Suitable for many liquids including water, diesel, gasoline and waste
- Works with many different tank sizes and shapes with programmable tank dimensions
- Normal, low, and critical alerting
- Low-profile design, industry standard SAE-5 stud mounting pattern

ARTICLE #	DESCRIPTION
EME1FL-015	Ultrasonic Fuel Level Sensor



ENVIRONMENTAL, POWER & SECURITY MONITORING



ALERTWERKS™ AIRFLOW SENSOR

Monitors airflow remotely

- Thermistor sensor
- On/off alarm signal for airflow
- Two LEDs indicate the status

ARTICLE #	DESCRIPTION
EME1F1-005-R2	5-ft. (1.5-m) Cable



ALERTWERKS™ 4-20 mA CONVERTER

Add a third-party, industrial sensor to AlertWerks ServSensor Hubs

- Enables you to communicate with equipment in industrial settings

ARTICLE #	DESCRIPTION
EME1C1-005	4-20 mA Converter



ALERTWERKS™ PHOTOELECTRIC SMOKE DETECTOR

Adept at detecting smoldering fires

- More effective than ionization smoke detectors at sensing smoldering fires
- Auto resets when smoke clears

ARTICLE #	DESCRIPTION
EME1S2-005	5-ft. (1.5-m) Cable



ALERTWERKS™ DRY-CONTACT SENSORS

Open/closed contact switch indicates Alarm or Normal

- Input voltage range of 0 to 5 VDC

ARTICLE #	DESCRIPTION
EME1K1-015	15-ft. (4.5-m) Cable



ALERTWERKS™ MOTION DETECTION SENSOR

Detects motion in a 60° angle

- Detection speed of 0.15–3 m/sec
- Temp. range of -4 to +144° F (-20 to +50° C)

ARTICLE #	DESCRIPTION
EME1M1-005-R2	5-ft. (1.5-m) Cable



ALERTWERKS™ SIREN AND STROBE LIGHT

Siren sounds at 100 ± 3 dB at 100 cm

- Maximum cable runs of 1000 feet (304.8 m)
- Can be triggered by any other sensor connected to the ServSensor Hub

ARTICLE #	DESCRIPTION
EME1SS-005	5-ft. (1.5-m) Cable



ALERTWERKS™ VOLTAGE SENSORS

For use with AlertWerks Sensor Hubs

- AC Voltage Sensor detects voltage from 50 to 250 VAC
- DC Voltage Sensor is user programmable

ARTICLE #	DESCRIPTION
EME1A1-005	AC, 5-ft. (1.5-m) Cable
EME1D1-005-R2	DC, 5-ft. (1.5-m) Cable



ALERTWERKS™ DIGITAL I/O SENSORS

Provides eight dry contacts on one sensor port

ARTICLE #	DESCRIPTION
EME1J8-005	(8) Dry Contacts with 5-ft. (1.5-m) Cable
EME1KJ8-005	(2) RJ-45 to (8) Dry Contacts with 5-ft. Cable



ALERTWERKS™ RACKMOUNT KITS

Convenient mounting of AlertWerks Hubs and Sensors

ARTICLE #	DESCRIPTION
EMEDIN	Rackmount DIN Rail
EMEDRMK	Dual Rackmount Bracket
EMESDIN	Split Rackmount DIN Rail Bracket





EME1TH2-005-R2



EME1P20-005



EME1PDCC-005

ALERTWERKS™ DUAL TEMPERATURE/HUMIDITY SENSORS

Monitor temperature and humidity

- Measurement range of -40 to +167° F (-40 to +75° C) in 1° F increments; accuracy of ±0.2° C
- Measure 0 to 100% relative humidity

ARTICLE #	DESCRIPTION
EME1TH1-001-R2	Dual Temperature/Humidity Sensor with 1-ft. (0.3-m) Fixed Cable
EME1TH2-005-R2	Dual Temperature/Humidity Sensor with 5-ft. (1.5-m) Fixed Cable
EME1TH3-015-R2	Dual Temperature/Humidity Sensor with 15-ft. (4.5-m) Fixed Cable
EME1THS	Dual Temperature/Humidity (6/2) Sensor String with 20-ft. (6.0-m) Cable

ALERTWERKS™ POWER SWITCHES

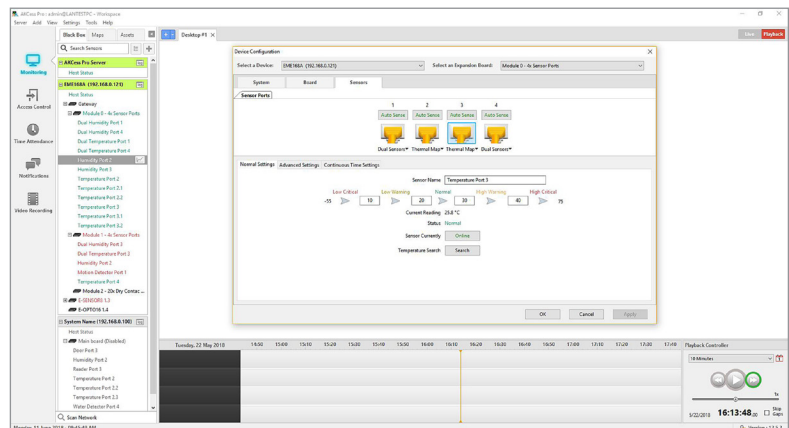
Control electric power over the internet or local IP network

- Metal oxide varistors and snubber circuits provide protection from electrical disturbance
- Monitors power and load
- Disconnect alarm sends a signal back to the sensor hub if the unit is unplugged
- Includes a 5-ft. (1.5-m) CAT5e cable, which can be replaced with up to 100-ft (30-m) of CAT5e for longer distances

ARTICLE #	DESCRIPTION
EME1P10-005	110V, Normally Open
EME1P2C-005	220V, Normally Closed
EME1P20-005	220V, Normally Open
EME1PDCC-005	48 VDC, Normally Closed
EME1PDCO-005	48 VDC, Normally Open



EME1Y1



ALERTWERKS™ SECURITY SENSORS/CONTACTS

Monitor doors remotely

- Disconnect alarm alerts you when doors to secure areas have been opened
- Open/closed contact switch indicates Alarm or Normal

ARTICLE #	DESCRIPTION
EME1Y1-015	15-ft. (4.5-m) Cable
EME1Y1-060	60-ft. (18.2-m) Cable

ALERTWERKS™ MANAGEMENT SOFTWARE

Integrated platform for environmental monitoring and video surveillance

- Automatically recognizes hubs, sensors and video surveillance
- Configure and monitor multiple hubs from one user interface
- Compatible with third-party cameras
- Redundant alert notifications using SMS, email and relays
- Set group policies for administrators and users

ARTICLE #	DESCRIPTION
EMEMS	AlertWerks Management Software - FREE

ENVIRONMENTAL, POWER & SECURITY MONITORING

BUYER'S GUIDE | ALERTWERKS™ SENSOR HUB COMPATIBILITY

SENSOR	CODE	SERVSSENSOR PLUS	SERVSSENSOR V4E	SERVSSENSOR V4E LITE	SERVSSENSOR & SERVSSENSOR CONTACT	SERVSSENSOR JUNIOR
TEMPERATURE						
Temperature Sensor, SNMP with 1-ft. Fixed Cable	EME1T1SNMP	Yes	Yes	Yes	Yes	Yes
Temperature Sensor, SNMP with 5-ft. Fixed Cable	EME1T5SNMP	Yes	Yes	Yes	Yes	Yes
Temperature Sensor String, (6) Sensors in 20-ft. String	EME1TS	Yes	No	No	No	No
LCD Display for (8) Sensor Readings, built-in Temperature Sensor	EME1LCD	Yes	No	No	No	No
Dual Temperature/Humidity Sensor with 1-ft. Fixed Cable	EME1TH1-001-R2	Yes	Yes	Yes	Yes	Yes
Dual Temperature/Humidity Sensor with 5-ft. Fixed Cable	EME1TH2-005-R2	Yes	Yes	Yes	Yes	Yes
Dual Temperature/Humidity Sensor with 15-ft. Fixed Cable	EME1TH3-015-R2	Yes	Yes	Yes	Yes	Yes
Dual Temperature/Humidity Sensor String, (6) Sensors in 20-ft. String	EME1THS	Yes	No	No	No	No
I/O						
4-20 mA Converter, 5-ft. Cable	EME1C1-005	Yes	Yes	Yes	Yes	Yes
Single Dry-Contact Sensor, 15-ft. Cable	EME1K1-015	Yes	Yes	Yes	Yes	Yes
Dry-Contact Sensor, (5) Inputs, 15-ft. Cable (EME1DC-UPG required)	EME1DC-015	Yes	No	No	No	Yes
Dry-Contact Software Upgrade	EME1DC-UPG	Yes	No	No	No	Yes
Digital I/O Sensor, (8) Dry Contacts, with 5-ft. Cable	EME1J8-005	Yes	Yes	Yes	No	No
Digital I/O Sensor, (2) RJ-45 to (8) Dry Contacts, with 5-ft. Cable	EME1KJ8-005	Yes	Yes	Yes	No	No
AIR/SMOKE						
Airflow Sensor, 5-ft. Cable	EME1F1-005-R2	Yes	Yes	Yes	Yes	No
Photoelectric Smoke Detector, 5-ft. Cable	EME1S2-005	Yes	Yes	Yes	Yes	Yes
FLUIDS						
Water Sensor, 15-ft. Cable	EME1W1-015	Yes	Yes	Yes	Yes	Yes
Rope Water Sensor, 20-ft. Cable	EMERW-020-R2	Yes	Yes	Yes	Yes	Yes
Rope Water Sensor Extension, 10-ft. Cable	EMERWE-010-R2	Yes	Yes	Yes	Yes	Yes
Ultrasonic Fuel Level Sensor, 15-ft. Cable	EME1FL-015	Yes	Yes	Yes	No	No



ENVIRONMENTAL, POWER & SECURITY MONITORING

BUYER'S GUIDE | ALERTWERKS™ SENSOR HUB COMPATIBILITY

SENSOR	CODE	SERVENOTOR PLUS	SERVENOTOR V4E	SERVENOTOR V4E LITE	SERVENOTOR & SERVENOTOR CONTACT	SERVENOTOR JUNIOR
SECURITY						
Motion Detection Sensor, 5-ft. Cable	EME1M1-005-R2	Yes	Yes	Yes	Yes	Yes
Security Sensor/Contact, 15-ft. Cable	EME1Y1-015	Yes	Yes	Yes	Yes	Yes
Security Sensor/Contact, 60-ft. Cable	EME1Y1-060	Yes	Yes	Yes	Yes	Yes
Siren and Strobe Light, 5-ft. Cable	EME1SS-005	Yes	Yes	Yes	Yes	Yes
ELECTRICITY						
AC Voltage Sensor, 5-ft. Cable	EME1A1-005	Yes	Yes	Yes	Yes	Yes
DC Voltage Sensor, 5-ft. Cable	EME1D1-005-R2	Yes	Yes	Yes	Yes	Yes
POWER SWITCHES						
Power Switch, 110V, Normally Open, 5-ft. Cable	EME1P10-005	Yes	Yes	Yes	Yes	Yes
Power Switch, 220V, Normally Closed, 5-ft. Cable	EME1P2C-005	Yes	Yes	Yes	Yes	Yes
Power Switch, 220V, Normally Open, 5-ft. Cable	EME1P2O-005	Yes	Yes	Yes	Yes	Yes
Power Switch, 48 VDC, Normally Closed, 5-ft. Cable	EME1PDCC-005	Yes	Yes	Yes	Yes	Yes
Power Switch, 48 VDC, Normally Open, 5-ft. Cable	EME1PDCO-005	Yes	Yes	Yes	Yes	Yes
CAMERAS						
Universal Mount Camera, NTSC	EME1FC-NTSC	No	Yes	No	No	No
Universal Mount Camera, PAL	EME1FC-PAL	No	Yes	No	No	No
MOUNTING						
Single 1U DIN Rail Rackmount Kit	EMEDIN	Yes (only EME161A)	No	No	No	Yes
Double Rackmount Kit	EMEDRMK	No	Yes	Yes	Yes	No
Split 1U DIN Rail Rackmount Kit	EMESDIN	No	Yes	Yes	Yes	No
EXPANSION						
ServSensor Expansion Unit, 8-Port Sensor Hub	EME1X8	Yes	Yes	Yes	No	No
ServSensor Expansion Unit, 8-Port Relay Hub	EME1P8	Yes	Yes	Yes	No	No
ServSensor Expansion Unit, (16) Dry Contact Expansion Hub	EME1DC16	Yes	Yes	Yes	No	No
MANAGEMENT SOFTWARE						
Management Software for Environmental Monitoring and Video Surveillance	EMEMS	Yes	Yes	Yes	Yes	Yes



WHY BLACK BOX?

EXPERTISE

Black Box project engineers can assist with system assessment, design, deployment and training.

BREADTH

Black Box offers the most comprehensive suite of IT infrastructure and networking solutions in the industry.

SUPPORT

Reflecting our commitment to complete satisfaction, our dedicated team of highly trained support technicians is available by phone free of charge, every day of the year.

WARRANTIES

Multi-Year warranties with multi-year extensions and replacement options are available.

FINANCIAL STRENGTH

Nearly \$1 billion in annual revenue; publicly traded (BBOX).

EXPERIENCE

Providing leading technology solutions since 1976, Black Box helps more than 175,000 customers in 150 countries build, manage, optimize and secure IT infrastructures.

CENTER OF EXCELLENCE

Black Box offers a Center of Excellence featuring professional services and support agreements that help optimize customers' systems and maximize uptime.

SERVICE LEVEL AGREEMENTS

Our Service Level Agreements give customers access to technical support, product training, dedicated application engineers and more.

