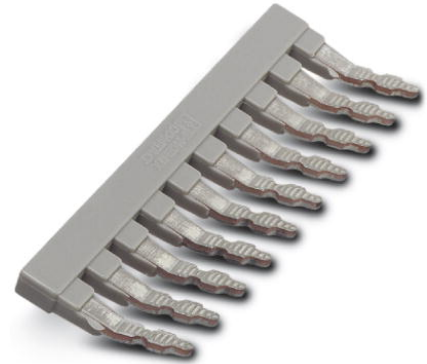



EB 10- 8

Order No.: 0202138



Insertion bridge, Number of positions: 10, Color: gray

Commercial data

GTIN (EAN)	 4 017918 098261
sales group	A901
Pack	10 pcs.
Customs tariff	85389099
Catalog page information	Page 343 (CL-2009)

Product notesWEEE/RoHS-compliant since:
01/01/2003

<http://www.download.phoenixcontact.com>
Please note that the data given here has been taken from the online catalog. For comprehensive information and data, please refer to the user documentation. The General Terms and Conditions of Use apply to Internet downloads.

Address

PHOENIX CONTACT Deutschland GmbH
Flachmarktstr. 8
32825 Blomberg, Germany
Phone +49 5235 3 12000
Fax +49 5235 3 41200
<http://www.phoenixcontact.de>



© 2010 Phoenix Contact
Technical modifications reserved;