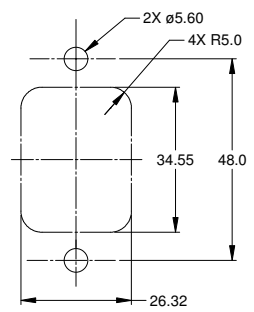
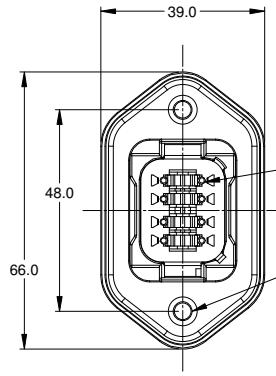
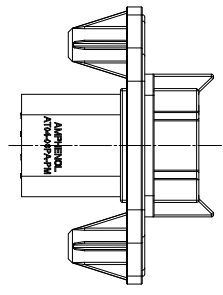
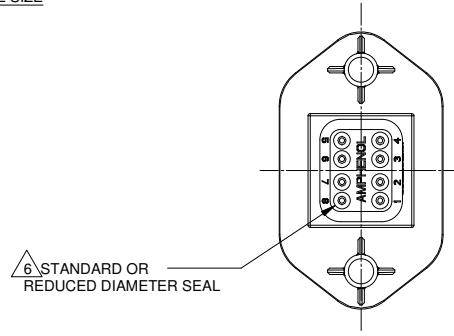
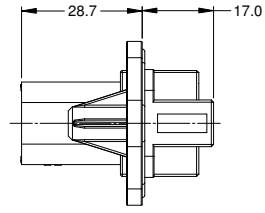


REVISIONS					
REV	ECO	DESCRIPTION	DATE	BY	APPR
A1	-	RELEASE	29JUN15	JAH	

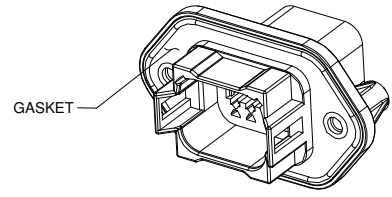


MOUNTING PLATE SIZE



REQUIRES CONTACT RETENTION WEDGE AW8

2X Ø4.0, 16.4 DP FROM MATING SURFACE  
 RECOMMENDED ATTACHMENT OPTIONS:  
 1. HEX WASHER HEAD SHEETMETAL SCREW, #10, 1/2" LONG, HEX SIZE 5/16".  
 2. SELF THREAD SCREW FOR PLASTIC SUCH AS ST 4.8



NOTES: UNLESS OTHERWISE SPECIFIED

- MATERIAL:  
HOUSING: THERMOPLASTIC  
CONTACT: COPPER ALLOY
- MODIFICATIONS: FLANGE, GASKET, END CAP (OPT.), RD SEAL (OPT.)
- SPECIFICATIONS:
  - CURRENT RATING: 13 AMPS
  - OPERATING TEMPERATURE: -55°C TO +125°C
  - DIELECTRIC WITHSTANDING VOLTAGE: LESS THAN 2 MILLIAMPS CURRENT LEAKAGE @ 1500 VOLTS AC.
  - INSULATION RESISTANCE: 1000 MEGOHMS MIN @ 25°C.
  - MOISTURE RESISTANCE: IP67 ( MATED CONDITION )
  - MATING CYCLE DURABILITY: 100 CYCLES
  - RoHS COMPLIANT
- MATING PART: AT06-08SX\* PLUG  
( X = A,B,C,D KEYS; \* = MODIFICATIONS AND COLORS )
- ALL DIMENSIONS ARE FOR REFERENCE USE ONLY.

CONTACT SIZE AND REAR SEAL WIRE RANGE

REDUCED DIAMETER SEAL:			
CONTACT SIZE	MIN. INSUL O.D.	MAX. INSUL O.D.	TYPICAL WIRE RANGE
16	1.35 mm (.053 in)	3.05 mm (.120 in)	14 - 20 AWG

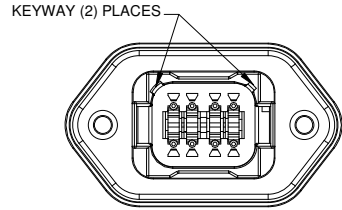
STANDARD SEAL:			
CONTACT SIZE	MIN. INSUL O.D.	MAX. INSUL O.D.	TYPICAL WIRE RANGE
16	2.24 mm (.088 in)	3.68 mm (.145 in)	14 - 20 AWG

SEE SHEET 2 FOR KEYS		PART NUMBER		DESCRIPTION		ITEM										
QUANTITY		MATERIALS LIST		<p style="text-align: center;"><b>Amphenol</b></p> <p style="text-align: center;">Sine Systems - www.amphenol-sine.com 44724 Morley Drive Clinton Township, MI 48036</p> <p style="text-align: center;"><b>RECEPTACLE, 8 PIN, AT SERIES, W/FLANGE</b></p>												
UNLESS OTHERWISE SPECIFIED		SIGNATURES		DATE		<table border="1"> <tr> <td>1) All dimensions are in metric(mm).</td> <td>14JUL15</td> </tr> <tr> <td>2) Tolerances are as follows:</td> <td></td> </tr> <tr> <td>1 PL DEC ±0.30 Fractions ±1/64</td> <td></td> </tr> <tr> <td>2 PL DEC ±0.15 Angles ±1°</td> <td></td> </tr> <tr> <td>3 PL DEC ±0.08</td> <td></td> </tr> </table>	1) All dimensions are in metric(mm).	14JUL15	2) Tolerances are as follows:		1 PL DEC ±0.30 Fractions ±1/64		2 PL DEC ±0.15 Angles ±1°		3 PL DEC ±0.08	
1) All dimensions are in metric(mm).	14JUL15															
2) Tolerances are as follows:																
1 PL DEC ±0.30 Fractions ±1/64																
2 PL DEC ±0.15 Angles ±1°																
3 PL DEC ±0.08																
MATERIAL SPECIFICATIONS:		CUSTOMER:		SCALE: NONE												
PROCESS SPECIFICATIONS:		THIS DRAWING IS SUPPLIED FOR INFORMATION ONLY. DESIGN FEATURES, SPECIFICATIONS AND PERFORMANCE DATA SHOWN HEREON ARE THE PROPERTY OF THE AMPHENOL CORPORATION. NO RIGHTS OF REPRODUCTION ARE IMPLIED. ALL DIMENSIONS ARE SUBJECT TO NORMAL MANUFACTURING VARIATIONS.		DWG NO. AT04-08PX-PMXX												
NEXT ASSY:		CUSTOMER:		REVISION A1												

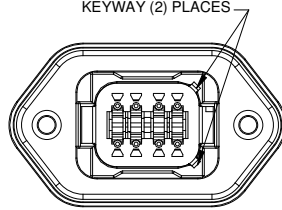
TITLE: RECEPTACLE, 8 PIN, AT SERIES, W/FLANGE  
DWG NO.: AT04-08PX-PMXX  
REV: A1  
SH: 1  
OF: 2

REVISIONS					
REV	ECO	DESCRIPTION	DATE	BY	APPR
A1	-	RELEASE	14JUL15	JAH	

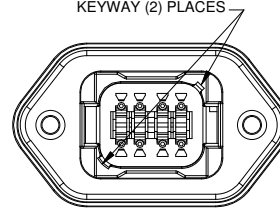
P/N AT04-08PA-PMXX  
KEY-A CONFIGURATION  
STANDARD COLOR: GREY



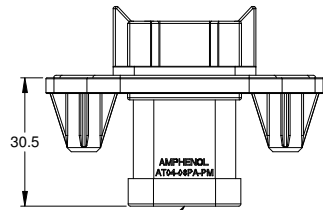
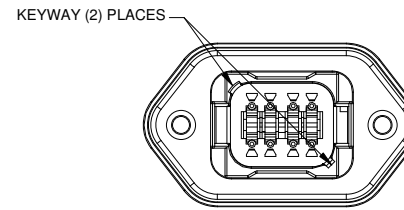
P/N AT04-08PB-PMXX  
KEY-B CONFIGURATION  
STANDARD COLOR: BLACK



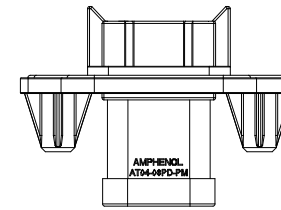
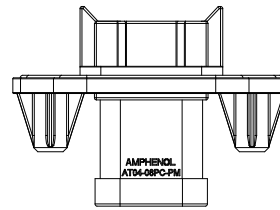
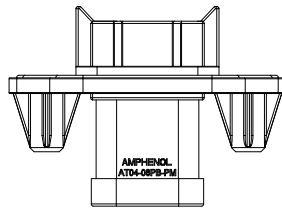
P/N AT04-08PC-PMXX  
KEY-C CONFIGURATION  
STANDARD COLOR: GREEN



P/N AT04-08PD-PMXX  
KEY-D CONFIGURATION  
STANDARD COLOR: BROWN



END CAP SHOWN  
ON THIS SHEET



KEY-A CONFIGURATION		
END CAP	SEAL	PART NUMBER
NO	STANDARD	AT04-08PA-PM11
NO	REDUCED DIA.	AT04-08PA-PM12
YES	STANDARD	AT04-08PA-PM13
YES	REDUCED DIA.	AT04-08PA-PM14

KEY-B CONFIGURATION		
END CAP	SEAL	PART NUMBER
NO	STANDARD	AT04-08PB-PM11
NO	REDUCED DIA.	AT04-08PB-PM12
YES	STANDARD	AT04-08PB-PM13
YES	REDUCED DIA.	AT04-08PB-PM14

KEY-C CONFIGURATION		
END CAP	SEAL	PART NUMBER
NO	STANDARD	AT04-08PC-PM11
NO	REDUCED DIA.	AT04-08PC-PM12
YES	STANDARD	AT04-08PC-PM13
YES	REDUCED DIA.	AT04-08PC-PM14

KEY-D CONFIGURATION		
END CAP	SEAL	PART NUMBER
NO	STANDARD	AT04-08PD-PM11
NO	REDUCED DIA.	AT04-08PD-PM12
YES	STANDARD	AT04-08PD-PM13
YES	REDUCED DIA.	AT04-08PD-PM14

QUANTITY	PART NUMBER	DESCRIPTION	ITEM
<b>MATERIALS LIST</b>			
UNLESS OTHERWISE SPECIFIED: 1) All dimensions are in metric(mm). 2) Tolerances are as follows: 1 PL DEC ±0.30   Fractions ±1/64 2 PL DEC ±0.15   Angles ±1° 3 PL DEC ±0.08		SIGNATURES      DATE DRAWN: J. HEAD      14JUL15 CHECKED: ENGINEER: APPROVAL:	
MATERIAL SPECIFICATIONS:		CUSTOMER:	
PROCESS SPECIFICATIONS:		THIS DRAWING IS SUPPLIED FOR INFORMATION ONLY. DESIGN FEATURES, SPECIFICATIONS AND PERFORMANCE DATA SHOWN HEREON ARE THE PROPERTY OF THE AMPHENOL CORPORATION. NO RIGHTS OF REPRODUCTION ARE IMPLIED. ALL DIMENSIONS ARE SUBJECT TO NORMAL MANUFACTURING VARIATIONS.	
NEXT ASSY:		SIZE: B C-      DWG NO.: AT04-08PX-PMXX      REVISION: A1 SCALE: NONE      SHEET 2 OF 2	

TITLE: RECEPTACLE, 8 PIN, AT SERIES, W/FLANGE  
DWG NO.: AT04-08PX-PMXX  
REV: A1  
SH: 2  
OF: 2