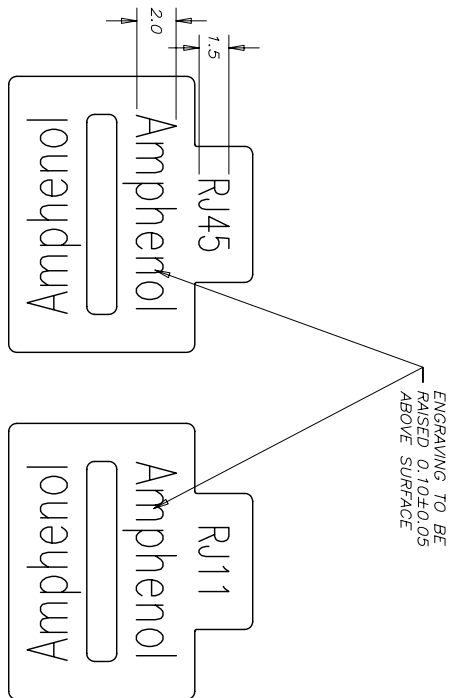
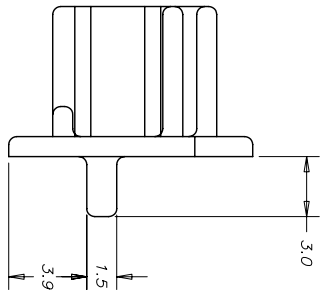
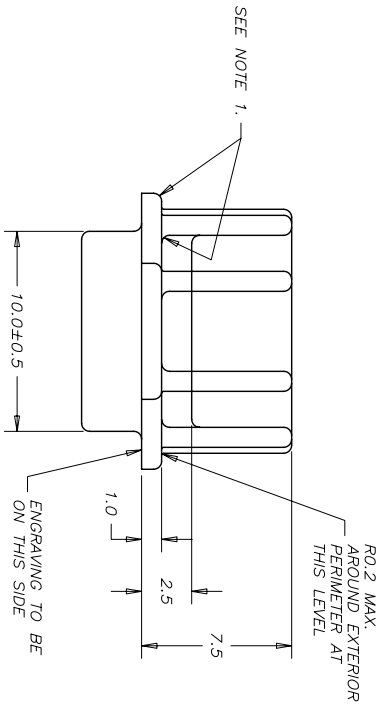
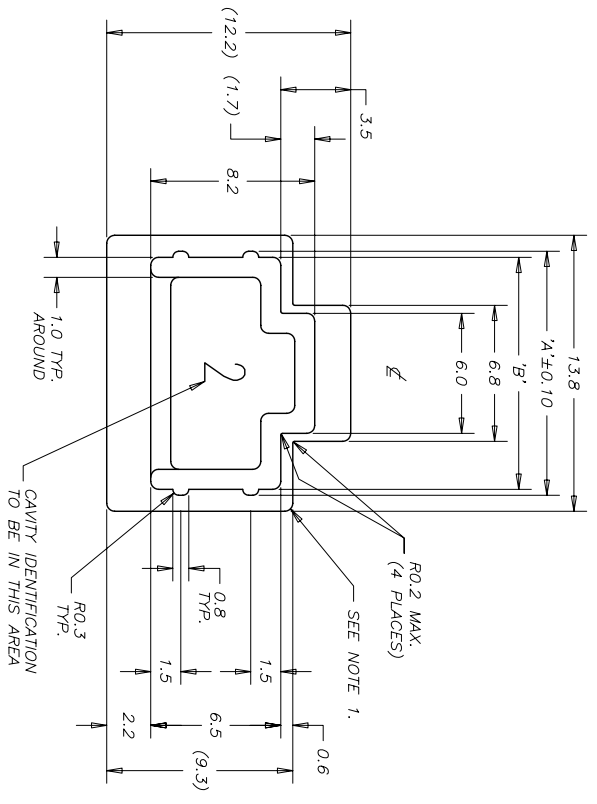


REVISIONS				
SYM	ZONE	ECN, ERN NO.	DATE	APPRD.
B		PROPOSAL	20-JAN-06	L.CHAN
C		PROPOSAL	July 9,06	L.CHAN



FRJ-2411 & FRJ-2A11 (ENGRAVING VIEW)
FRJ-2611 (ENGRAVING VIEW)

ENGRAVING DETAILS



TABLE:

PART NUMBER	FOR CONNECTOR TYPE	1A ± 0.10	B'	COLOUR
FRJ-2411	RJ45	12.20	11.6	GREY
FRJ-2A11	RJ45	12.20	11.6	BLACK
FRJ-2611	RJ11	10.17	9.6	NATURAL

- NOTES:
- UNLESS SPECIFIED OTHERWISE, FILLETS AND EDGES TO BE SHARP TO 0.4R MAXIMUM.
 - PART TO BE FREE OF FLASH, GATE REMNANT, VIDS AND DISCOLOURATION.
 - GENERAL TOLERANCE UNLESS INDICATED OTHERWISE: ±0.2.
 - MATERIAL TO HAVE A CONTINUOUS SERVICE USE TEMPERATURE OF -30°C TO +60°C.

THIS DOCUMENT CONTAINS PROPRIETARY INFORMATION AND SUCH INFORMATION MAY NOT BE DISCLOSED TO OTHERS FOR ANY PURPOSE OR USED FOR MANUFACTURING PURPOSES WITHOUT WRITTEN PERMISSION FROM AMPHENOL CANADA CORP.

MATERIAL	ANTI-STATIC LOW DENSITY POLYETHYLENE (SEE NOTE 4.)	FINISH	-----
DESIGNED	DRAMIN Chigow	DATE	20-JAN-06
CHECKED	L.CHAN	20-JAN-06	
Q. A. APPRD.			
DWG. APPRD.			
ENG. REL. NO.			
REF.			
DIMENSIONS ARE IN	MM	CODE ID. NO.	03554
SCALE	5/1	WT.	
SURF.		SHEET	1 OF 1

Amphenol Canada Corp.
RJ DUST CAPS

DWG. DRAWING NO. P-FRJ-2X11

REV. C