

PRODUCT NUMBER

89898-YXXZHFLF

RoHS COMPATIBLE, SEE NOTE 6

OPTION LETTERS, NOTE 1b, OMIT FROM PRODUCT NUMBER IF NOT APPLICABLE

A=PRODUCT WITH GREY PICK UP CAP IN TAPE & REEL, SEE TA-856.

AV=PRODUCT WITH GREY PICK UP CAP IN TAPE & REEL

FOR CUSTOMER DEDICATED PART, SEE TA-856.

B=PRODUCT WITH PICK UP CAP PACKED IN TUBE.

G=PRODUCT WITH BLACK PICK UP CAP IN TAPE & REEL, SEE TA-856.

K=PRODUCT WITHOUT PICK UP CAP IN TAPE & REEL, SEE TA-856

NUMBER OF POSITIONS PER ROW: 02 TO 30.  
OVER THAN 30 POSITIONS ON SPECIAL REQUEST.

PLATING CODE

3= 0.76µm GOLD ON CONTACT AREA.

2µm MIN MATTE TIN ON TAIL.

4= 2µm MIN MATTE TIN FULL PLATED

1.27µm Ni MIN UNDERPLATING

NOTES:

1a- HOUSING & PICK UP CAP MAT'L: THERMOPLASTIC GLASS FILLED FLAME RETARDANT PER UL 94 V-0 COLOR: GREY.

b- HIGH TEMPERATURE PLASTIC 30% GLASS REINFORCED NON HALOGEN FLAME RETARDED MOLDING COMPOUND COLOR BLACK.

2 - TERMINAL MATERIAL: PHOSPHOR BRONZE.

3 - PACKAGING:

2 UP TO 4 POSITIONS PRODUCT PACKED IN PLASTIC BOX.

5 UP TO 30 POSITIONS PRODUCT PACKED IN TUBE.

WHOLE 89898-304B PACKED IN TUBE.

4 - TO DETERMINE DIMENSIONS:

N = NUMBER OF POSITIONS PER ROW

EXAMPLE: 8 POS: (N×2.54)-0.08=20.24 mm.

5 - RECOMMENDED IR PROFILE PER TA842.

6 - RoHS COMPATIBLE PRODUCT SPECIFICATIONS

a - PLATING:

- "LF" MEANS THE PRODUCT IS LEAD-FREE,  
2µm MINIMUM MATTE TIN OVER 1.27µm  
MINIMUM NICKEL UNDERPLATE.

b - MANUFACTURING PROCESS COMPATIBILITY

- THE HOUSING WILL WITHSTAND EXPOSURE TO 260°C PEAK  
TEMPERATURE FOR 30 SECONDS MAX IN A CONVECTION  
INFRA-RED OR VAPOR PHASE OR REFLOW OVEN.

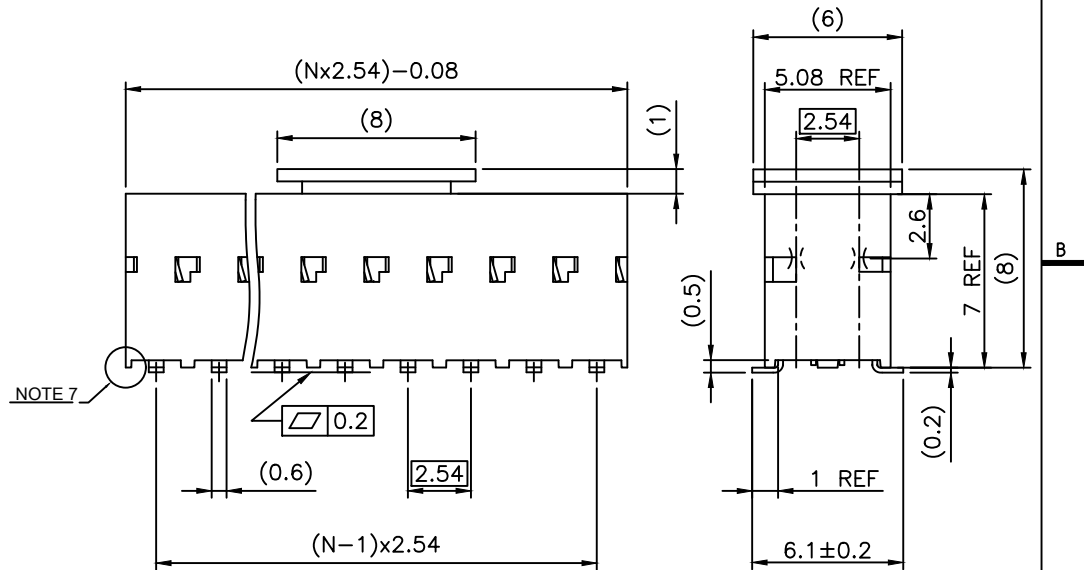
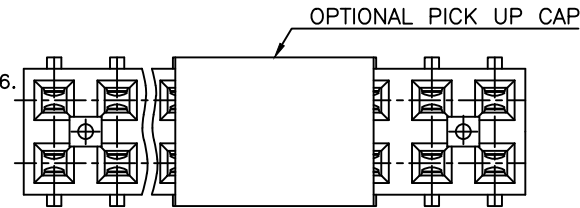
c - LABELING:

- MEETS PACKAGING SPECS AS PER GS-14-920

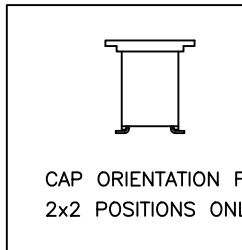
d - LEGAL STATEMENT: SEE GS-47-0004

7 - END STAND-OFFS FOR 2x2 UP TO 2x4 POS

NO END STAND-OFFS FOR 2x5 UP TO 2x50 POS



NOTE 7

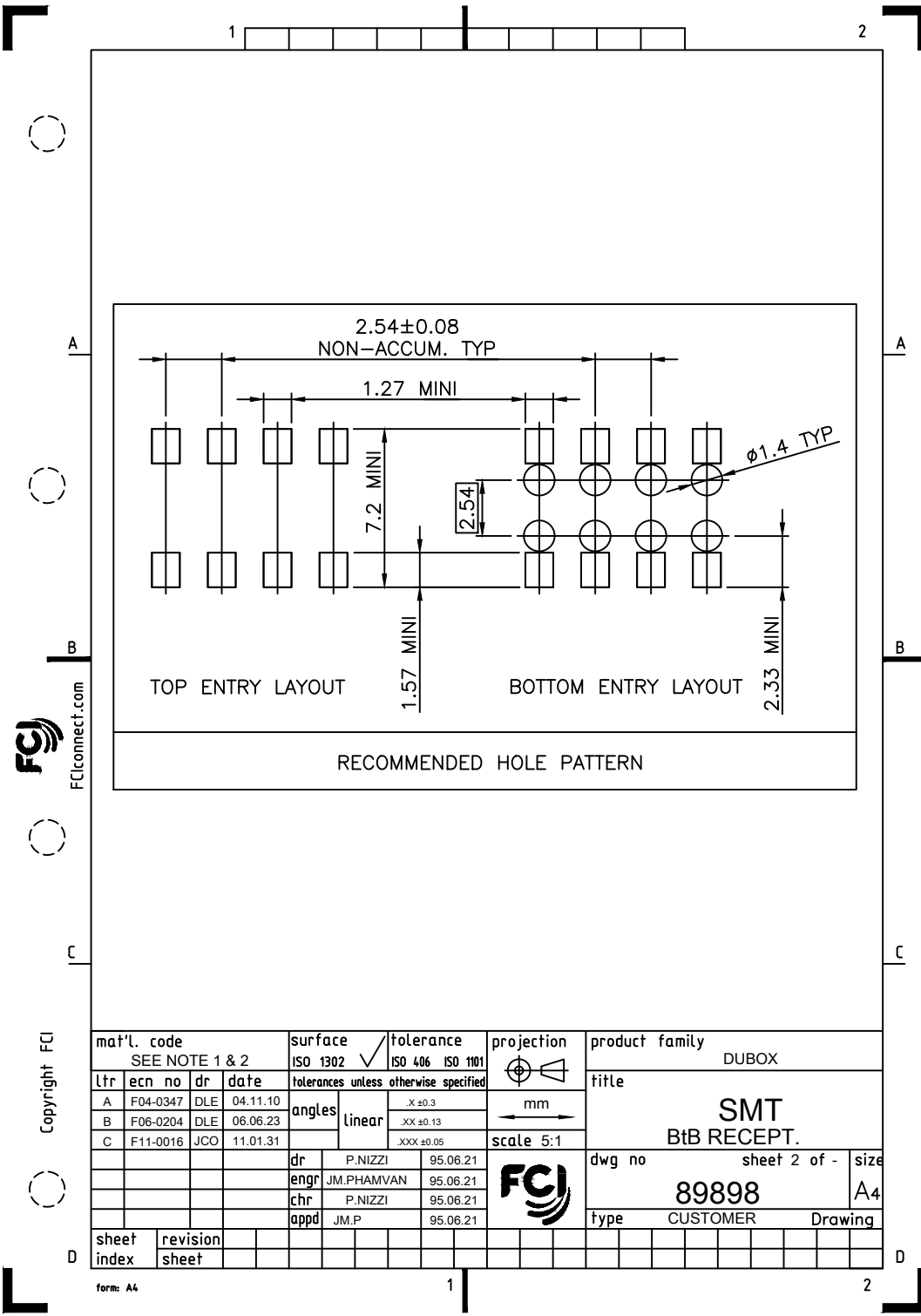


CAP ORIENTATION FOR  
2x2 POSITIONS ONLY

mat'l. code		surface		tolerance		projection		product family	
SEE NOTE 1 & 2		ISO 1302 ✓		ISO 406 ISO 1101		mm		DUBOX	
lfr		ecn no		dr		date		title	
AE		F12-0047		JCO		12.07.16		SMT	
AF		B-18748		LMU		14.09.04		BtB RECEPT.	
AG		B-19123		LMU		14.10.21		scale 5:1	
AH		F-24429		AMA		16.07.01		dr	
AJ		F-25050		DDE		16.09.28		engr	
AK		F-30587		DDE		18.06.29		chr	
								appd	
sheet index		revision sheet		AK		C		dwg no	
		1		2				sheet 1 of 2	
								size	
								89898	
								A3	
								type	
								CUSTOMER	
								Drawing	



Copyright FCI



Copyright FCJ

mat'l. code SEE NOTE 1 & 2				surface ISO 1302 ✓		tolerance ISO 406 ISO 1101		projection ⊕		product family DUBOX	
ltr	ecn no	dr	date	tolerances unless otherwise specified				title			
A	F04-0347	DLE	04.11.10	angles	linear	.X ±0.3		mm ←→		SMT BtB RECEPT.	
B	F06-0204	DLE	06.06.23			.XX ±0.13					
C	F11-0016	JCO	11.01.31			.XXX ±0.05					
				dr	P.NIZZI	95.06.21		dwg no		sheet 2 of -	size
				engr	JM.PHAMVAN	95.06.21		FCJ		89898 A4	
				chr	P.NIZZI	95.06.21					
				appd	JM.P	95.06.21					
sheet index		revision sheet									

form: A4

# Mouser Electronics

Authorized Distributor

Click to View Pricing, Inventory, Delivery & Lifecycle Information:

## FCI / Amphenol:

[89898-303ALF](#) [89898-304A](#) [89898-305A](#) [89898-305ALF](#) [89898-306BLF](#) [89898-307A](#) [89898-307ALF](#) [89898-307B](#)  
[89898-307BLF](#) [89898-308BLF](#) [89898-309ALF](#) [89898-311BLF](#) [89898-312A](#) [89898-313ALF](#) [89898-314ALF](#) [89898-](#)  
[315BLF](#) [89898-316BLF](#) [89898-317BLF](#) [89898-320ALF](#) [89898-320BLF](#) [89898-322ALF](#) [89898-324ALF](#) [89898-](#)  
[325ALF](#) [89898-325BLF](#) [89898-403ALF](#) [89898-404ALF](#) [89898-404LF](#) [89898-405ALF](#) [89898-406ALF](#) [89898-406LF](#)  
[89898-407ALF](#) [89898-407LF](#) [89898-408ALF](#) [89898-409ALF](#) [89898-409LF](#) [89898-410ALF](#) [89898-411ALF](#) [89898-](#)  
[411LF](#) [89898-412ALF](#) [89898-412LF](#) [89898-413ALF](#) [89898-413LF](#) [89898-414ALF](#) [89898-414LF](#) [89898-415ALF](#)  
[89898-415LF](#) [89898-416ALF](#) [89898-416LF](#) [89898-417ALF](#) [89898-417LF](#) [89898-418ALF](#) [89898-418LF](#) [89898-](#)  
[419LF](#) [89898-420ALF](#) [89898-420LF](#) [89898-421LF](#) [89898-422ALF](#) [89898-422LF](#) [89898-423LF](#) [89898-424ALF](#)  
[89898-424LF](#) [89898-425ALF](#) [89898-425LF](#) [89898-325](#) [89898-302LF](#) [89898-303LF](#) [89898-304LF](#) [89898-305LF](#)  
[89898-306LF](#) [89898-307LF](#) [89898-308LF](#) [89898-309LF](#) [89898-310LF](#) [89898-311LF](#) [89898-312LF](#) [89898-313LF](#)  
[89898-314LF](#) [89898-315LF](#) [89898-316LF](#) [89898-317LF](#) [89898-318LF](#) [89898-319LF](#) [89898-320LF](#) [89898-321LF](#)  
[89898-322LF](#) [89898-323LF](#) [89898-324LF](#) [89898-325LF](#) [89898-402LF](#) [89898-402ALF](#) [89898-403LF](#) [89898-405LF](#)  
[89898-408LF](#) [89898-408BLF](#) [89898-410LF](#) [89898-302ALF](#) [89898-304ALF](#) [89898-306ALF](#) [89898-308ALF](#) [89898-](#)  
[310ALF](#)