

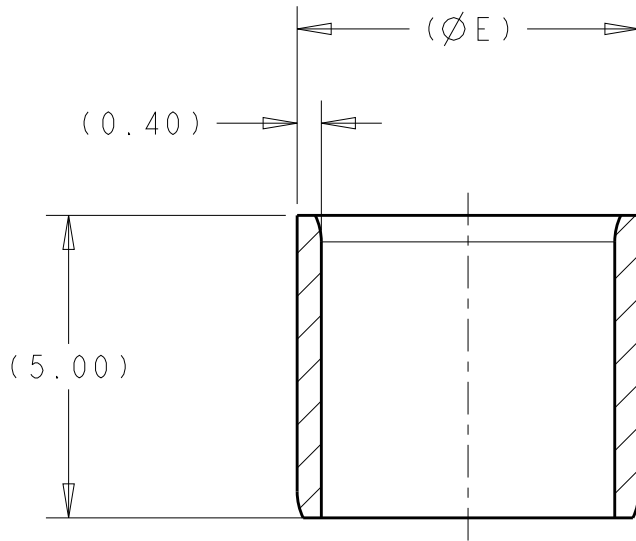
20
RELEASED FOR PUBLICATION

THIS DRAWING IS UNPUBLISHED.

BY TYCO ELECTRONICS CORPORATION
ALL RIGHTS RESERVED.
© COPYRIGHT 20

REVISIONS

P	LTR	DESCRIPTION	DATE	DWN	APVD
	B3	ECO-13-000550	10JAN2013	DS	AT
	B3	ECO-14-000116	27FEB2014	DS	AT
	B4	ECO-19-004590	25MAR2019	YS	AT



SCALE 4:1

- 1 MATERIAL TYPE: COPPER ALLOY
- 2 FINISH: BARE
- 3. PARTS MUST BE FREE OF BURRS, CRACKS, OR OTHER VISUAL IMPERFECTIONS THAT MAY AFFECT FIT FORM OR FUNCTION
- 4 NOTE DELETED
- 5. THE FUNCTION OF THE INNER FERRULE IS TO PROVIDE MECHANICAL SUPPORT TO THE OUTER FERRULE IN THE WIRE SHIELD CRIMP APPLICATION. THE INNER FERRULE DOES NOT HAVE AN ELECTRICAL FUNCTION AND IS NOT PLATED. SURFACE DISCOLORATION FROM MANUFACTURING PROCESS OR ENVIRONMENTAL EXPOSURE DOES NOT IMPACT PRODUCT FUNCTION.

5.41	6.10	7.00	SIZE C	1587828-3
4.76	5.41	6.30	SIZE B	1587828-2
4.11	4.76	5.70	SIZE A	1587828-1
MIN	MAX	E	DESCRIPTION	PART NO
WIRE O.D.				

DIMENSIONS: mm	DWN D SIMPSON 01JUN2009	MATERIAL	1	FINISH	2
TOLERANCES UNLESS OTHERWISE SPECIFIED:	CHK A TYLER 01JUN2009				
0 PLC ±-	APVD -				
1 PLC ±0.2	PRODUCT SPEC 108-2394	NAME INNER FERRULE, HVA280			
2 PLC ±0.10	APPLICATION SPEC 114-13259	SIZE	CAGE CODE	DRAWING NO	RESTRICTED TO
3 PLC ±0.013	WEIGHT -	A4	00779	C-1587828	
4 PLC ±0.0001		CUSTOMER DRAWING			
ANGLES ±-		SCALE	8:1	SHEET	1 OF 1
				REV	B4