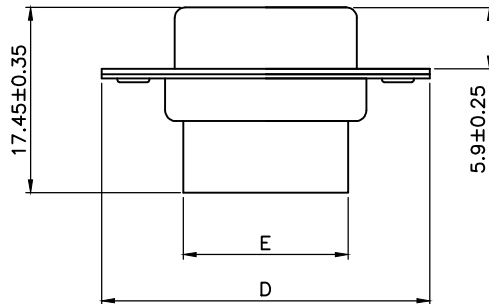
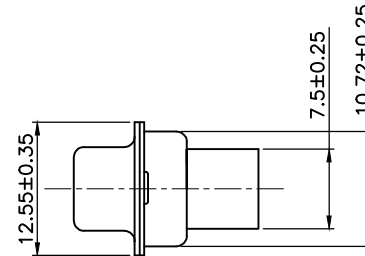
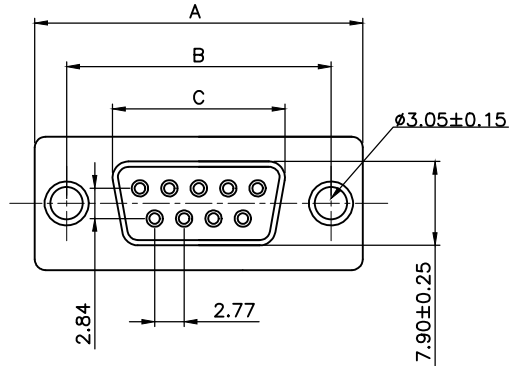


THIS IS A C.A.D. GENERATED DRAWING
DO NOT MAKE MANUAL REVISIONS TO MASTER.



* UNLESS OTHERWISE SPECIFIED TOLERANCES
ON DECIMAL IS: ANGLE $\pm 1^\circ$
.X ± 0.25
.XX ± 0.15



Order Codes:
Socket Connector

9-WAY	2101-0190-11	MHDBC09-SS
15-WAY	2101-0190-12	MHDBC15-SS
25-WAY	2101-0190-13	MHDBC25-SS
37-WAY	2101-0190-14	MHDBC37-SS

Remark:

1.SPECIFICATION:

Rated voltage:250V
Rates current:3AMP
Contact resistance:30MΩ MAX
Insulation resistance:1000MΩ MIN.at 500V DC
Withstand voltage:500V Per minute
Temperature range:-55 -105 °C

2.MATERIAL:

Plastic:PBT+30% G.F (UL94V-0) BLACK
Spcc shell:Spcc front shell is nickel plated back shell is nickel plated

PIN	A±0.25	B±0.25	C±0.25	D±0.25	E±0.25
09	30.81	24.99	16.33	19.28	15.50
15	39.25	33.32	24.66	27.55	24.75
25	53.03	47.04	38.38	41.25	38.00
37	69.40	63.50	54.85	57.40	54.20

THESE DRAWINGS AND SPECIFICATIONS ARE THE PROPERTY OF MH CONNECTORS AND SHALL NOT BE REPRODUCED, COPIED OR USED AS THE BASIS FOR THE MANUFACTURE OR SALE OF APPARATUS WITHOUT WRITTEN PERMISSION.

DRAWN
Iven Ou
DATE
08-30-22

APPROVED
DATE

SCALE
1 : 1
SHEET OF
1 OF 1
REV:
4.0

DRAWING No
MHDBCXX-SS



THIS SERIES FULLY CONFORMS TO THE EUROPEAN UNION DIRECTIVES 2002/95/EC AND 2002/96/EC FOR RoHS COMPLIANCY.



MH CONNECTORS,
DIVISION OF EDAC