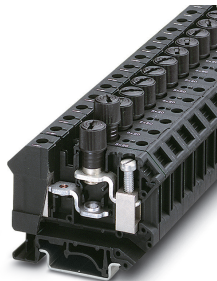


## Fuse modular terminal block - UK 10-DREHSI (6,3X32) - 3005507

Please be informed that the data shown in this PDF Document is generated from our Online Catalog. Please find the complete data in the user's documentation. Our General Terms of Use for Downloads are valid (<http://phoenixcontact.com/download>)




Fuse modular terminal block, fuse type: Glass / ceramics / ..., fuse type: G / 6,3 x 32, nom. voltage: 400 V, nominal current: 10 A, connection method: Screw connection, Rated cross section: 1.5 mm<sup>2</sup>, cross section: 0.5 mm<sup>2</sup>- 16 mm<sup>2</sup>, mounting type: NS 35/7,5, NS 35/15, NS 32, color: black

### Your advantages

- ✔ Can be bridged with FBI ... fixed bridge



### Key Commercial Data

|              |   |
|--------------|---|
| Packing unit | 50 pc   |
| GTIN         | <br>4 017918 091170 |
| GTIN         | 4017918091170   |

### Technical data

#### General

|  |   |
|--|---|
| Number of rows                         | 1   |
| Number of connections                  | 2   |
| Nominal cross section                  | 16 mm <sup>2</sup>  |
| Color                                  | black   |
| Insulating material                    | PA  |
| Flammability rating according to UL 94 | V2  |
| Rated surge voltage                    | 4 kV  |
| Degree of pollution                    | 3   |
| Overvoltage category                   | III   |
| Insulating material group              | I   |
| Maximum power dissipation              | max. 2.5 W (with single arrangement of the fuse terminal block in the event of overload)              |
|  | max. 2.5 W (With interconnected arrangement of several fuse terminal blocks in the event of overload) |
|  | max. 4 W (with single arrangement of the fuse terminal block in the event of a short-circuit)         |

# Fuse modular terminal block - UK 10-DREHSI (6,3X32) - 3005507

## Technical data

### General

|  |  |
|--|--|
|  | max. 2.5 W (With interconnected arrangement of several fuse terminal blocks in the event of a short-circuit) |
| Connection in acc. with standard   | IEC 60947-7-3  |
| Maximum load current   | 10 A   |
| Nominal current I <sub>N</sub>   | 10 A   |
| Nominal voltage U <sub>N</sub>   | 400 V  |
|  | 800 V (As a disconnect terminal block)   |
| Fuse   | G / 6,3 x 32   |
| Fuse type  | Glass / ceramics / ...   |
| Open side panel  | No   |
| Shock protection test specification  | DIN EN 50274 (VDE 0660-514):2002-11  |
| Back of the hand protection  | guaranteed   |
| Finger protection  | guaranteed   |
| Result of surge voltage test   | Test passed  |
| Surge voltage test setpoint  | 4.8 kV   |
| Result of power-frequency withstand voltage test   | Test passed  |
| Power frequency withstand voltage setpoint   | 1.5 kV   |
| Result of tight fit on support   | Test passed  |
| Contact resistance   | Test passed  |
| Compatibility between modular fuse terminal block and fuse insert                        | Test passed  |
| Result of flexion and pull-out test  | Test passed  |
| Bending test rotation speed  | 10 rpm   |
| Bending test turns   | 135  |
| Bending test conductor cross section/weight  | 0.5 mm <sup>2</sup> / 0.3 kg   |
|  | 16 mm <sup>2</sup> / 2.9 kg  |
| Testing the rated value of the power dissipation (overload and short circuit Protection) | Test passed  |
| Testing the rated value of the power dissipation (exclusively short circuit protection)  | Test passed  |
| Result of temperature-rise test  | Test passed  |
| Result of thermal test   | Test passed  |
| Relative insulation material temperature index (Elec., UL 746 B)                         | 130 °C   |
| Temperature index of insulation material (DIN EN 60216-1 (VDE 0304-21))                  | 130 °C   |
| Static insulating material application in cold   | -60 °C   |
| Surface flammability NFPA 130 (ASTM E 162)   | passed   |
| Specific optical density of smoke NFPA 130 (ASTM E 662)                                  | passed   |
| Smoke gas toxicity NFPA 130 (SMP 800C)   | passed   |
| Calorimetric heat release NFPA 130 (ASTM E 1354)   | 28 MJ/kg   |
| Fire protection for rail vehicles (DIN EN 45545-2) R22                                   | HL 1 - HL 3  |
| Fire protection for rail vehicles (DIN EN 45545-2) R23                                   | HL 1 - HL 3  |
| Fire protection for rail vehicles (DIN EN 45545-2) R24                                   | HL 1 - HL 3  |

# Fuse modular terminal block - UK 10-DREHSI (6,3X32) - 3005507

## Technical data

### General

|  |             |
|--|-------------|
| Fire protection for rail vehicles (DIN EN 45545-2) R26 | HL 1 - HL 3 |
|--|-------------|

### Dimensions

|                  |         |
|------------------|---------|
| Width            | 12 mm   |
| Length           | 62 mm   |
| Height NS 35/7,5 | 57.2 mm |
| Height NS 35/15  | 64.7 mm |
| Height NS 32     | 62.2 mm |

### Connection data

|  |                     |
|--|---------------------|
| Conductor cross section solid min.   | 0.5 mm <sup>2</sup> |
| Conductor cross section solid max.   | 16 mm <sup>2</sup>  |
| Conductor cross section flexible min.  | 0.5 mm <sup>2</sup> |
| Conductor cross section flexible max.  | 16 mm <sup>2</sup>  |
| Conductor cross section AWG min.   | 20                  |
| Conductor cross section AWG max.   | 6                   |
| Conductor cross section flexible, with ferrule without plastic sleeve min.                             | 0.5 mm <sup>2</sup> |
| Conductor cross section flexible, with ferrule without plastic sleeve max.                             | 10 mm <sup>2</sup>  |
| Conductor cross section flexible, with ferrule with plastic sleeve min.                                | 0.5 mm <sup>2</sup> |
| Conductor cross section flexible, with ferrule with plastic sleeve max.                                | 10 mm <sup>2</sup>  |
| Cross section with insertion bridge, solid max.  | 10 mm <sup>2</sup>  |
| Cross section with insertion bridge, stranded max.   | 10 mm <sup>2</sup>  |
| 2 conductors with same cross section, solid min.   | 0.5 mm <sup>2</sup> |
| 2 conductors with same cross section, solid max.   | 4 mm <sup>2</sup>   |
| 2 conductors with same cross section, stranded min.  | 0.5 mm <sup>2</sup> |
| 2 conductors with same cross section, stranded max.  | 4 mm <sup>2</sup>   |
| Two conductors with the same cross section stranded, with ferrule and without plastic sleeve, minimum  | 0.5 mm <sup>2</sup> |
| Two conductors with the same cross section stranded, with ferrule and without plastic sleeve, maximum  | 4 mm <sup>2</sup>   |
| Two conductors with the same cross section, flexible, with TWIN ferrules, with plastic sleeve, minimum | 0.5 mm <sup>2</sup> |
| Two conductors with the same cross section, flexible, with TWIN ferrules, with plastic sleeve, maximum | 10 mm <sup>2</sup>  |
| Cross section with insertion bridge, solid max.  | 10 mm <sup>2</sup>  |
| Cross section with insertion bridge, stranded max.   | 10 mm <sup>2</sup>  |
| Connection method  | Screw connection    |
| Stripping length   | 11 mm               |
| Internal cylindrical gage  | B6                  |
| Screw thread   | M4                  |
| Tightening torque, min   | 1.5 Nm              |
| Tightening torque max  | 1.8 Nm              |

### Ambient conditions

# Fuse modular terminal block - UK 10-DREHSI (6,3X32) - 3005507

## Technical data

### Ambient conditions

|  |   |
|--|---|
| Operating temperature                    | -60 °C ... 105 °C (max. short-term operating temperature 130°C)           |
| Ambient temperature (storage/transport)  | -25 °C ... 60 °C (for a short time, not exceeding 24 h, -60 °C to +70 °C) |
| Permissible humidity (storage/transport) | 30 % ... 70 %   |
| Ambient temperature (assembly)           | -5 °C ... 70 °C   |
| Ambient temperature (actuation)          | -5 °C ... 70 °C   |

### Standards and Regulations

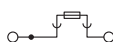
|                                  |               |
|----------------------------------|---------------|
| Connection in acc. with standard | CSA           |
|                                  | IEC 60947-7-3 |

### Environmental Product Compliance

|            |   |
|------------|---|
| REACH SVHC | Lead 7439-92-1  |
| China RoHS | Environmentally Friendly Use Period = 50 years  |
|            | For details about hazardous substances go to tab "Downloads", Category "Manufacturer's declaration" |

## Drawings

### Circuit diagram



## Classifications

### eCl@ss

|               |          |
|---------------|----------|
| eCl@ss 10.0.1 | 27141116 |
| eCl@ss 11.0   | 27141116 |
| eCl@ss 4.0    | 27141100 |
| eCl@ss 4.1    | 27141100 |
| eCl@ss 5.0    | 27141100 |
| eCl@ss 5.1    | 27141100 |
| eCl@ss 6.0    | 27141100 |
| eCl@ss 7.0    | 27141116 |
| eCl@ss 9.0    | 27141116 |

### ETIM

|          |          |
|----------|----------|
| ETIM 2.0 | EC000899 |
| ETIM 3.0 | EC000899 |
| ETIM 4.0 | EC000899 |
| ETIM 6.0 | EC000899 |
| ETIM 7.0 | EC000899 |

# Fuse modular terminal block - UK 10-DREHSI (6,3X32) - 3005507

## Classifications

### UNSPSC

|               |          |
|---------------|----------|
| UNSPSC 6.01   | 30211812 |
| UNSPSC 7.0901 | 39121411 |
| UNSPSC 11     | 39121411 |
| UNSPSC 12.01  | 39121411 |
| UNSPSC 13.2   | 39121410 |
| UNSPSC 18.0   | 39121410 |
| UNSPSC 19.0   | 39121410 |
| UNSPSC 20.0   | 39121410 |
| UNSPSC 21.0   | 39121410 |

## Approvals

### Approvals


#### Approvals


DNV GL / CSA / KEMA-KEUR / IECCE CB Scheme / EAC / cULus Recognized

#### Ex Approvals

### Approval details

|        |   |   |            |
|--------|---|---|------------|
| DNV GL |  | <a href="https://approvalfinder.dnvgl.com/">https://approvalfinder.dnvgl.com/</a> | TAE00001ER |
|--------|---|---|------------|

|                            |   |   |       |
|----------------------------|---|---|-------|
| CSA                        |  | <a href="http://www.csagroup.org/services-industries/product-listing/">http://www.csagroup.org/services-industries/product-listing/</a> | 13631 |
| Nominal voltage UN         | 300 V   |   |       |
| Nominal current IN         | 20 A  |   |       |
| mm <sup>2</sup> /AWG/kcmil | 22-6  |   |       |

|                            |   |   |           |
|----------------------------|---|---|-----------|
| KEMA-KEUR                  |  | <a href="http://www.dekra-certification.com">http://www.dekra-certification.com</a> | 71-108062 |
| Nominal voltage UN         | 800 V   |   |           |
| Nominal current IN         | 10 A  |   |           |
| mm <sup>2</sup> /AWG/kcmil | 0.5-16  |   |           |

# Fuse modular terminal block - UK 10-DREHSI (6,3X32) - 3005507

## Approvals

|                            |                     |   |             |
|----------------------------|---------------------|---|-------------|
| IECEE CB Scheme            | <b>CB</b><br>scheme | <a href="http://www.iecee.org/">http://www.iecee.org/</a> | NL-56826/A1 |
| Nominal voltage UN         |                     | 800 V   |             |
| mm <sup>2</sup> /AWG/kcmil |                     | 0.5-16  |             |

|     |            |                          |
|-----|------------|--------------------------|
| EAC | <b>EAC</b> | RU C-<br>DE.BL08.B.00534 |
|-----|------------|--------------------------|

|                            |              |   |        |
|----------------------------|--------------|---|--------|
| cULus Recognized           | <b>cULus</b> | <a href="http://database.ul.com/cgi-bin/XYV/template/LISEXT/1FRAME/index.htm">http://database.ul.com/cgi-bin/XYV/template/LISEXT/1FRAME/index.htm</a> | E60425 |
|                            | B            | C   |        |
| Nominal voltage UN         | 300 V        | 300 V   |        |
| Nominal current IN         | 20 A         | 20 A  |        |
| mm <sup>2</sup> /AWG/kcmil | 24-6         | 24-6  |        |

## Accessories

### Accessories

#### DIN rail

DIN rail perforated - NS 32 PERF 2000MM - 1201002



DIN rail perforated, acc. to EN 60715, material: Steel, galvanized, passivated with a thick layer, G profile, color: silver

DIN rail, unperforated - NS 32 UNPERF 2000MM - 1201015



DIN rail, unperforated, acc. to EN 60715, material: Steel, galvanized, passivated with a thick layer, G profile, color: silver

## Fuse modular terminal block - UK 10-DREHSI (6,3X32) - 3005507

### Accessories

DIN rail perforated - NS 35/ 7,5 PERF 2000MM - 0801733



DIN rail perforated, acc. to EN 60715, material: Steel, galvanized, passivated with a thick layer, Standard profile, color: silver

---

DIN rail, unperforated - NS 35/ 7,5 UNPERF 2000MM - 0801681



DIN rail, unperforated, acc. to EN 60715, material: Steel, galvanized, passivated with a thick layer, Standard profile, color: silver

---

DIN rail perforated - NS 35/ 7,5 WH PERF 2000MM - 1204119



DIN rail perforated, acc. to EN 60715, material: Steel, Galvanized, white passivated, Standard profile, color: silver

---

DIN rail, unperforated - NS 35/ 7,5 WH UNPERF 2000MM - 1204122



DIN rail, unperforated, acc. to EN 60715, material: Steel, Galvanized, white passivated, Standard profile, color: silver

---

DIN rail, unperforated - NS 35/ 7,5 AL UNPERF 2000MM - 0801704



DIN rail, unperforated, acc. to EN 60715, material: Aluminum, uncoated, Standard profile, color: silver

---

## Fuse modular terminal block - UK 10-DREHSI (6,3X32) - 3005507

### Accessories

DIN rail perforated - NS 35/ 7,5 ZN PERF 2000MM - 1206421



DIN rail perforated, acc. to EN 60715, material: Steel, galvanized, Standard profile, color: silver

---

DIN rail, unperforated - NS 35/ 7,5 ZN UNPERF 2000MM - 1206434



DIN rail, unperforated, acc. to EN 60715, material: Steel, galvanized, Standard profile, color: silver

---

DIN rail, unperforated - NS 35/ 7,5 CU UNPERF 2000MM - 0801762



DIN rail, unperforated, acc. to EN 60715, material: Copper, uncoated, Standard profile, color: copper-colored

---

End cap - NS 35/ 7,5 CAP - 1206560



DIN rail end piece, for DIN rail NS 35/7.5

---

DIN rail perforated - NS 35/15 PERF 2000MM - 1201730



DIN rail perforated, similar to EN 60715, material: Steel, galvanized, passivated with a thick layer, Standard profile, color: silver

---



## Fuse modular terminal block - UK 10-DREHSI (6,3X32) - 3005507

### Accessories

DIN rail, unperforated - NS 35/15 UNPERF 2000MM - 1201714



DIN rail, unperforated, similar to EN 60715, material: Steel, galvanized, passivated with a thick layer, Standard profile, color: silver

---

DIN rail perforated - NS 35/15 WH PERF 2000MM - 0806602



DIN rail perforated, similar to EN 60715, material: Steel, Galvanized, white passivated, Standard profile, color: silver

---

DIN rail, unperforated - NS 35/15 WH UNPERF 2000MM - 1204135



DIN rail, unperforated, similar to EN 60715, material: Steel, Galvanized, white passivated, Standard profile, color: silver

---

DIN rail, unperforated - NS 35/15 AL UNPERF 2000MM - 1201756



DIN rail, unperforated, similar to EN 60715, material: Aluminum, uncoated, Standard profile, color: silver

---

DIN rail perforated - NS 35/15 ZN PERF 2000MM - 1206599



DIN rail perforated, similar to EN 60715, material: Steel, galvanized, Standard profile, color: silver

---

## Fuse modular terminal block - UK 10-DREHSI (6,3X32) - 3005507

### Accessories

DIN rail, unperforated - NS 35/15 ZN UNPERF 2000MM - 1206586



DIN rail, unperforated, similar to EN 60715, material: Steel, galvanized, Standard profile, color: silver

---

DIN rail, unperforated - NS 35/15 CU UNPERF 2000MM - 1201895



DIN rail, unperforated, similar to EN 60715, material: Copper, uncoated, Standard profile, color: copper-colored

---

End cap - NS 35/15 CAP - 1206573



DIN rail end piece, for DIN rail NS 35/15

---

DIN rail, unperforated - NS 35/15-2,3 UNPERF 2000MM - 1201798



DIN rail, unperforated, acc. to EN 60715, material: Steel, galvanized, passivated with a thick layer, Standard profile 2.3 mm, color: silver

---

### End block

End clamp - CLIPFIX 35 - 3022218



Quick mounting end clamp for NS 35/7,5 DIN rail or NS 35/15 DIN rail, with marking option, width: 9.5 mm, color: gray

---

## Fuse modular terminal block - UK 10-DREHSI (6,3X32) - 3005507

### Accessories

End clamp - CLIPFIX 35-5 - 3022276



Quick mounting end clamp for NS 35/7,5 DIN rail or NS 35/15 DIN rail, with marking option, with parking option for FBS...5, FBS...6, KSS 5, KSS 6, width: 5.15 mm, color: gray

---

End clamp - E/NS 35 N - 0800886



End clamp, width: 9.5 mm, color: gray

---

End clamp - E/UK - 1201442



End clamp, Mounting on a DIN rail NS 32 or NS 35, material: PA, color: gray

---

End clamp - E/UK 1 - 1201413



End clamps, for supporting the ends of double-level and three-level terminal blocks, width: 10 mm, color: gray

---

### Insertion bridge

Insertion bridge - EB 10-12 - 3006137



Insertion bridge, pitch: 12 mm, color: gray

---

### Labeled terminal marker

## Fuse modular terminal block - UK 10-DREHSI (6,3X32) - 3005507

### Accessories

#### Zack marker strip - ZB 6 CUS - 0824992



Zack marker strip, can be ordered: Strip, white, labeled according to customer specifications, mounting type: snap into tall marker groove, for terminal block width: 6.2 mm, lettering field size: 6.15 x 10.5 mm, Number of individual labels: 10

#### Zack marker strip - ZB 6,LGS:FORTL.ZAHLEN - 1051016



Zack marker strip, Strip, white, labeled, can be labeled with: CMS-P1-PLOTTER, printed horizontally: consecutive numbers 1 ... 10, 11 ... 20, etc. up to 491 ... 500, mounting type: snap into tall marker groove, for terminal block width: 6.2 mm, lettering field size: 6.15 x 10.5 mm, Number of individual labels: 10

#### Zack marker strip - ZB 6,QR:FORTL.ZAHLEN - 1051029



Zack marker strip, Strip, white, labeled, can be labeled with: CMS-P1-PLOTTER, Printed vertically: consecutive numbers 1 ... 10, 11 ... 20, etc. up to 491 ... 500, mounting type: snap into tall marker groove, for terminal block width: 6.2 mm, lettering field size: 6.15 x 10.5 mm, Number of individual labels: 10

#### Zack marker strip - ZB 6,LGS:GLEICHE ZAHLEN - 1051032



Zack marker strip, Strip, white, labeled, can be labeled with: CMS-P1-PLOTTER, printed horizontally: Identical numbers 1 or 2, etc. up to 100, mounting type: snap into tall marker groove, for terminal block width: 6.2 mm, lettering field size: 6.15 x 10.5 mm, Number of individual labels: 10

#### Marker for terminal blocks - ZB 6,LGS:L1-N,PE - 1051414



Marker for terminal blocks, Strip, white, labeled, can be labeled with: CMS-P1-PLOTTER, horizontal: L1, L2, L3, N, PE, L1, L2, L3, N, PE, mounting type: snap into tall marker groove, for terminal block width: 6.2 mm, lettering field size: 6.15 x 10.5 mm, Number of individual labels: 10

## Fuse modular terminal block - UK 10-DREHSI (6,3X32) - 3005507

### Accessories

Marker for terminal blocks - ZB 6,LGS:U-N - 1051430



Marker for terminal blocks, Strip, white, labeled, can be labeled with: CMS-P1-PLOTTER, printed horizontally: U, V, W, N, GND, U, V, W, N, GND, mounting type: snap into tall marker groove, for terminal block width: 6.2 mm, lettering field size: 6.15 x 10.5 mm, Number of individual labels: 10

Marker for terminal blocks - UC-TM 6 CUS - 0824589



Marker for terminal blocks, can be ordered: by sheet, white, labeled according to customer specifications, mounting type: snap into tall marker groove, for terminal block width: 6.2 mm, lettering field size: 5.6 x 10.5 mm, Number of individual labels: 80

Marker for terminal blocks - UCT-TM 6 CUS - 0829602



Marker for terminal blocks, can be ordered: by sheet, white, labeled according to customer specifications, mounting type: snap into tall marker groove, for terminal block width: 6.2 mm, lettering field size: 5.6 x 10.5 mm, Number of individual labels: 60

### Screw bridge

Fixed bridge - FBI 10-12 - 0203454



Fixed bridge, pitch: 12 mm, color: silver

Fixed bridge - FBI 2-12 - 0200075



Fixed bridge, pitch: 12 mm, color: silver

### Screwdriver tools

## Fuse modular terminal block - UK 10-DREHSI (6,3X32) - 3005507

### Accessories

Screwdriver - SZS 1,0X4,0 VDE - 1205066



Screwdriver, slot-headed, VDE insulated, size: 1.0 x 4.0 x 100 mm, 2-component grip, with non-slip grip

---

### Terminal marking

Zack marker strip - ZB 6:UNBEDRUCKT - 1051003



Zack marker strip, Strip, white, unlabeled, can be labeled with: PLOTMARK, CMS-P1-PLOTTER, mounting type: snap into tall marker groove, for terminal block width: 6.2 mm, lettering field size: 6.15 x 10.5 mm, Number of individual labels: 10

Marker for terminal blocks - UC-TM 6 - 0818085



Marker for terminal blocks, Sheet, white, unlabeled, can be labeled with: BLUEMARK ID COLOR, BLUEMARK ID, BLUEMARK CLED, PLOTMARK, CMS-P1-PLOTTER, mounting type: snap into tall marker groove, for terminal block width: 6.2 mm, lettering field size: 5.6 x 10.5 mm, Number of individual labels: 80

Marker for terminal blocks - UCT-TM 6 - 0828736



Marker for terminal blocks, Sheet, white, unlabeled, can be labeled with: TOPMARK NEO, TOPMARK LASER, BLUEMARK ID COLOR, BLUEMARK ID, BLUEMARK CLED, THERMOMARK PRIME, THERMOMARK CARD 2.0, THERMOMARK CARD, mounting type: snap into tall marker groove, for terminal block width: 6.2 mm, lettering field size: 5.6 x 10.5 mm, Number of individual labels: 60

---

### Test socket

Female test connector - PSBJ 4/15/6 FARBLOS - 0303419



Female test connector, color: transparent

## Fuse modular terminal block - UK 10-DREHSI (6,3X32) - 3005507

### Accessories

Female test connector - PSBJ 4/15/6 WH - 0303312



Female test connector, color: white

---

Female test connector - PSBJ 4/15/6 RD - 0303325



Female test connector, color: red

---

Female test connector - PSBJ 4/15/6 BU - 0303354



Female test connector, color: blue

---

Female test connector - PSBJ 4/15/6 YE - 0303367



Female test connector, color: yellow

---

Female test connector - PSBJ 4/15/6 GN - 0303370



Female test connector, color: green

---

## Fuse modular terminal block - UK 10-DREHSI (6,3X32) - 3005507

### Accessories

Female test connector - PSBJ 4/15/6 VT - 0303383



Female test connector, color: violet

---

Female test connector - PSBJ 4/15/6 GY - 0303396



Female test connector, color: gray

---

Female test connector - PSBJ 4/15/6 BK - 0303406



Female test connector, color: black

---

Female test connector - PSB 4/7/6 - 0303299



Female test connector, color: silver

---

Phoenix Contact 2021 © - all rights reserved  
<http://www.phoenixcontact.com>

PHOENIX CONTACT GmbH & Co. KG  
Flachsmarktstr. 8  
32825 Blomberg  
Germany  
Tel. +49 5235 300  
Fax +49 5235 3 41200  
<http://www.phoenixcontact.com>