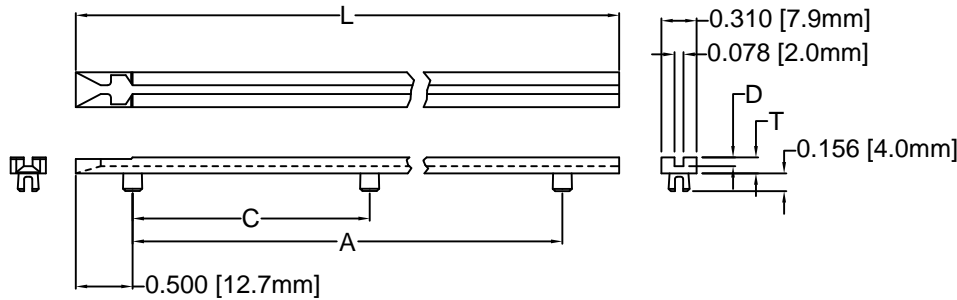
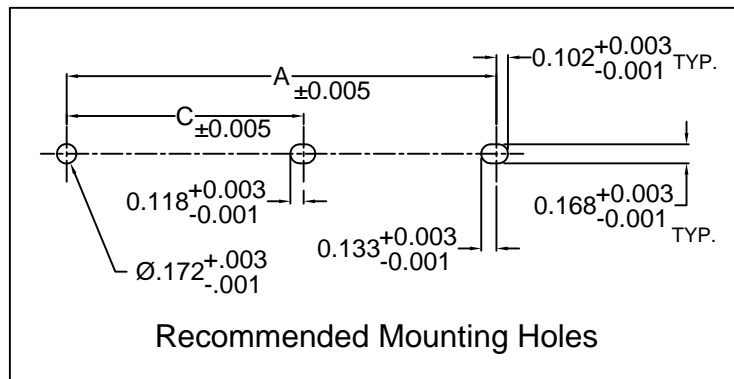


REV.	DESCRIPTION	DATE	APPROVED
D	Engineering Update w/o Changes	02/26/04	M. C.
E	Materials Update	07/10/14	J. C.
F	Engineering Update w/o Changes	05/13/16	J. C.



PART NO.	L ±.062 (1.6)	A +.016 (.41) -.032 (.81)	C +.016 (.41) -.032 (.81)	D ±.005 (.1)	T ±.005 (.1)	DESC DWG. NO.
E-200	2.0 (50.8)	1.016 (25.8)	N/A	.078 (2.0)	.125 (3.2)	-
E-250	2.5 (63.5)					84006-01
E-300	3.0 (76.2)	1.516 (38.5)	N/A	.078 (2.0)	.125 (3.2)	84006-02
E-350	3.5 (88.9)					84006-03
E-400	4.0 (101.6)					84006-04
E-450	4.5 (114.3)	3.016 (76.6)	N/A	.078 (2.0)	.125 (3.2)	84006-05
E-500	5.0 (127.0)					84006-06
E-550	5.5 (139.7)					84006-07
E-600	6.0 (152.4)	5.016 (127.4)	N/A	.078 (2.0)	.125 (3.2)	84006-08
E-650	6.5 (165.1)					84006-09
E-700	7.0 (177.8)					84006-10
E-750	7.5 (190.5)	6.031 (153.2)	N/A	.078 (2.0)	.125 (3.2)	84006-11
E-800	8.0 (203.2)					84006-12

PART NO.	L ±.062 (1.6)	A +.016 (.41) -.047 (1.2)	C +.016 (.41) -.032 (.81)	D ±.005 (.1)	T ±.007 (.2)	DESC DWG. NO.
E-850	8.5 (215.9)					84006-13
E-900	9.0 (228.6)	7.531(191.3)	3.766 (95.7)	.078 (2.0)	.141 (3.6)	84006-14
E-950	9.5 (241.3)					84006-15
E-1000	10.0 (254.0)					84006-16
E-1050	10.5 (266.7)	9.031(229.4)	4.516 (114.7)	.078 (2.0)	.141 (3.6)	84006-17
E-1100	11.0 (279.4)					84006-18
E-1150	11.5 (292.1)					84006-19
E-1200	12.0 (304.8)	10.547(267.9)	5.274 (134.0)	.093 (2.4)	.156 (4.0)	84006-20
E-1250	12.5 (317.5)					84006-21
E-1300	13.0 (330.2)					84006-22
E-1350	13.5 (342.9)	12.047(306.0)	6.024 (153.0)	.093 (2.4)	.156 (4.0)	84006-23
E-1400	14.0 (355.6)					84006-24



Recommended Mounting Holes

2. MATERIAL: NYLON 66, 15% GLASS, 94V-0, BLACK.

1. GENERAL SPECIFICATIONS: BIVAR MOLDED COMPONENT SPECIFICATION BV00-E101.

STANDARD TOLERANCE (UNLESS OTHERWISE SPECIFIED)		 4 THOMAS, IRVINE, CA. 92618 TEL: (949) 951-8808 FAX: (949) 951-3974			
DECIMALS	ANGULAR				
.X ±.1	X° ± 1°	 TITLE: ECON-O-GIDE PRESS-IN CARD GUIDE			
.XX ±.01					
.XXX ±.005		DESIGNED: <b>S. Irving</b>	DATE: <b>08/10/98</b>	PART NO: <b>E-XXX</b>	REVISION: <b>F</b>
CHECKED: <b>D. Green</b>		DATE: <b>12/03/02</b>		CAGE CODE : <b>32559</b>	SHEET # <b>1</b> OF <b>1</b>
CAD GENERATED DOCUMENT. DO NOT MEASURE DRAWING.					

# Mouser Electronics

Authorized Distributor

Click to View Pricing, Inventory, Delivery & Lifecycle Information:

## BIVAR:

[E-1000](#) [E-1200](#) [E-1300](#) [E-200](#) [E-250](#) [E-300](#) [E-350](#) [E-400](#) [E-450](#) [E-500](#) [E-550](#) [E-600](#) [E-650](#) [E-700](#) [E-750](#) [E-800](#) [E-850](#) [E-1050](#) [E-1100](#) [E-1150](#) [E-1250](#) [E-1350](#) [E-1400](#) [E-900](#) [E-950](#)