

REV.	ECON. NO.	APPD.
A		

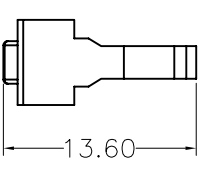
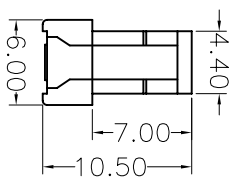
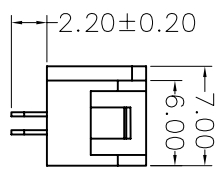
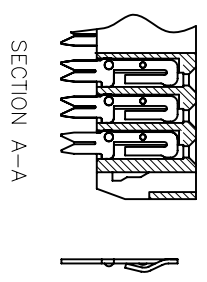
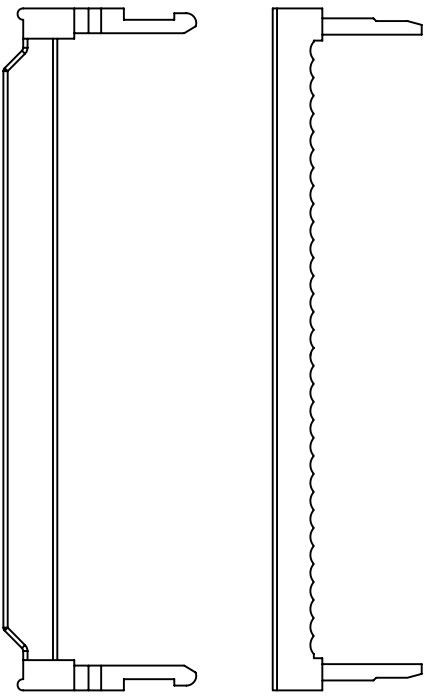
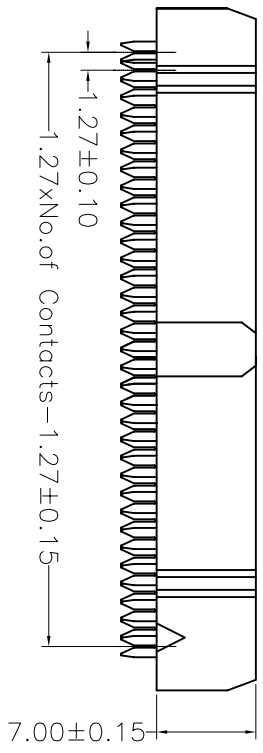
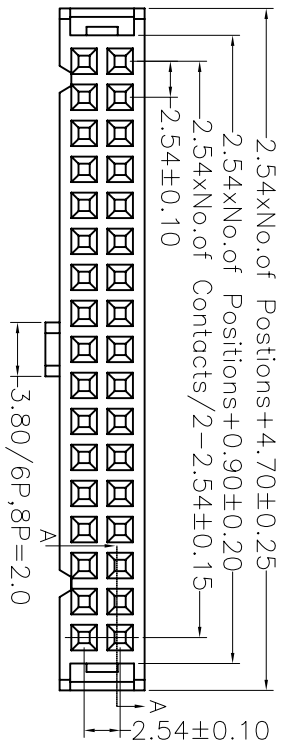
NOTES:
 Current Rating: 3AMP
 Contact Resistance: 20mΩ max
 Withstand Voltage: 1000V AC/DC
 Insulation Resistance: 1000MΩ Min
 Operation Temperature: -40°C to +105°C

Contact Material: Brass
 Contact plating: Au Over Ni
 Insulator Material: PBT+30%GF(UL94V-0)
 Contact plated: Gold Flash

Ordering Information

MTFC12-XX Y X

No. of Pins	Marker
06P 26P	W=With SR
08P 30P	N=W/O SR
10P 34P	
12P 36P	
14P 40P	
16P 44P	
18P 50P	
20P 60P	
22P 64P	
24P	



X.	± 0.30	X.°	± 5°	UNITS	mm
X	± 0.20	X.°	± 2°	MATL	
XX	± 0.10	XX°	± 1°		
.XXX	± 0.05	.XXX°	± 0.5°	FINISH	
				QTY	

NAME (INTENDED USE)	IDC SOCKET CONNECTOR
PART NO. (INTENDED USE)	
APPD:	SUNNY
CHKD:	USA
DR:	ZOE
	2006-11-28

MINTRON CO., LTD.	
TITLE: 2.54IDC SOCKET+SR(ONE SIDE CONTACT)	
DWG NO.: MTFC12-XXXX	
SCALE	1/1
SHEET	1/1
REV.	A