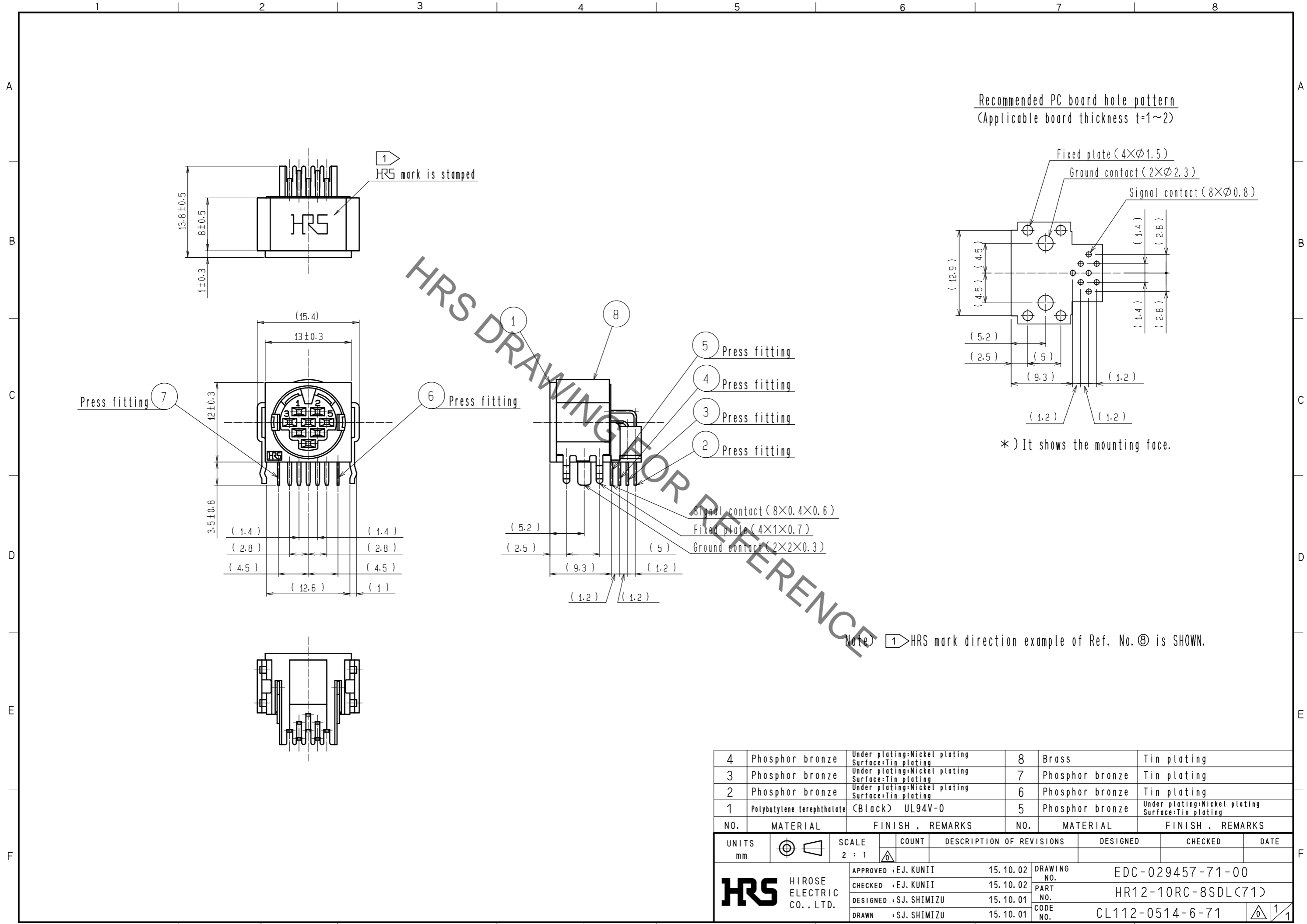


Dec.1.2021 Copyright 2021 HIROSE ELECTRIC CO., LTD. All Rights Reserved.
In case of consideration for using Automotive equipment / device which demand high reliability, kindly contact our sales window correspondents.



Note) 1 HRS mark direction example of Ref. No. ⑧ is SHOWN.

4	Phosphor bronze	Under plating:Nickel plating Surface:Tin plating	8	Brass	Tin plating
3	Phosphor bronze	Under plating:Nickel plating Surface:Tin plating	7	Phosphor bronze	Tin plating
2	Phosphor bronze	Under plating:Nickel plating Surface:Tin plating	6	Phosphor bronze	Tin plating
1	Polybutylene terephthalate	(Black) UL94V-0	5	Phosphor bronze	Under plating:Nickel plating Surface:Tin plating
NO.	MATERIAL	FINISH . REMARKS	NO.	MATERIAL	FINISH . REMARKS

UNITS mm		SCALE 2 : 1	COUNT 	DESCRIPTION OF REVISIONS	DESIGNED	CHECKED	DATE
HIROSE ELECTRIC CO., LTD.				APPROVED :EJ. KUNII 15.10.02 CHECKED :EJ. KUNII 15.10.02 DESIGNED :SJ. SHIMIZU 15.10.01 DRAWN :SJ. SHIMIZU 15.10.01	DRAWING NO. EDC-029457-71-00 PART NO. HR12-10RC-8SDL(71) CODE NO. CL112-0514-6-71		

Mouser Electronics

Authorized Distributor

Click to View Pricing, Inventory, Delivery & Lifecycle Information:

[Hirose Electric:](#)

[HR12-10RC-8SDL\(71\)](#)