

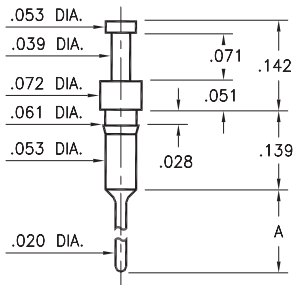
MALE PCB PINS

PRINTED CIRCUIT PINS

3408

3408-X-00-XX-00-00-03-0

Press-fit in .057 mounting hole

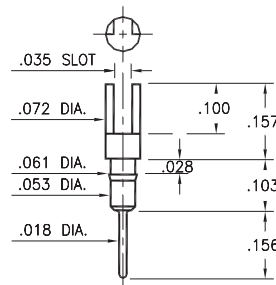


Basic Part Number	Pin Length A
3408-1	.121
3408-2	.181

0270/0282

02XX-0-01-XX-00-00-03-0

Press-fit in .057 mounting hole

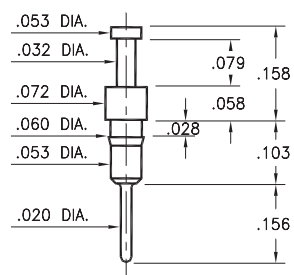


Basic Part Number	Pin Material
0270-0	Phosphor Bronze 544 Brass 360
0282-0	

0700

0700-0-00-XX-00-00-03-0

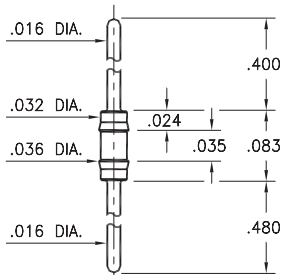
Press-fit in .057 mounting hole



8006

8006-0-00-XX-00-00-03-0

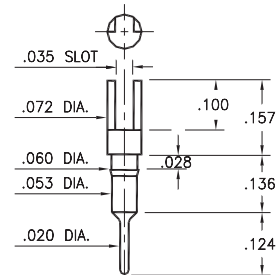
Press-fit in .034 mounting hole



0265

0265-0-01-XX-00-00-03-0

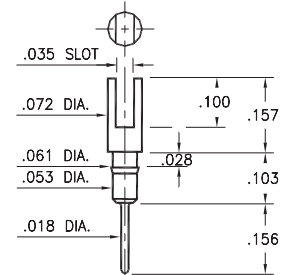
Press-fit in .057 mounting hole



0272

0272-0-01-XX-00-00-03-0

Press-fit in .057 mounting hole

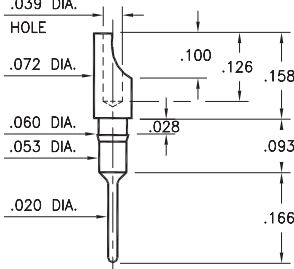


8000

8000-0-01-XX-00-00-03-0

Press-fit in .057 mounting hole

For wire sizes up to 22 AWG



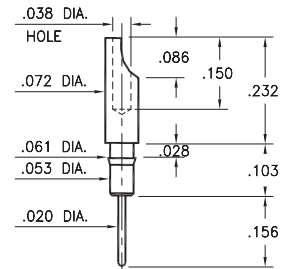
0275

0275-0-01-XX-00-00-03-0

Press-fit in .057 mounting hole

Pin material is Phosphor Bronze 544 (B2)

For wire sizes up to 22 AWG

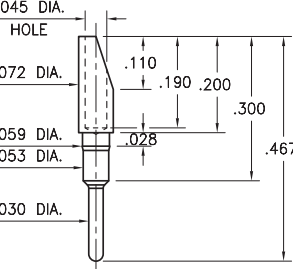


1107

1107-0-01-15-00-00-03-0

Press-fit in .057 mounting hole

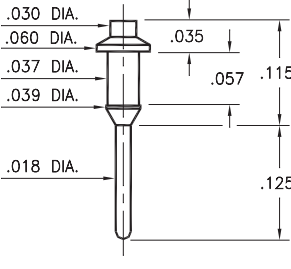
For wire sizes up to 20 AWG



9976

9976-0-00-XX-00-00-03-0

Press-fit in .038 mounting hole



SPECIFICATIONS:

Pin Material: Brass Alloy 360, 1/2 Hard
(Except where noted)

Dimensions: Inches

Tolerances On: Lengths: ±.005
Diameters: ±.002
Angles: ±2°



ORDER CODE: XXXX - X - 0X - XX - 00 - 00 - XX - 0

BASIC PART # →

SPECIFY PIN FINISH:

- 01 200 μ" TIN/LEAD OVER NICKEL
- ◆ 80 200 μ" TIN OVER NICKEL (RoHS)
- ◆ 15 10 μ" GOLD OVER NICKEL (RoHS)
- ◆ 21 20 μ" GOLD OVER NICKEL (RoHS)
- ◆ 34 50 μ" GOLD OVER NICKEL (RoHS)



Mouser Electronics

Authorized Distributor

Click to View Pricing, Inventory, Delivery & Lifecycle Information:

Mill-Max:

[8000-0-01-01-00-00-03-0](#) [0272-0-01-80-00-00-03-0](#) [3603-0-07-21-00-00-08-0](#) [0700-0-00-01-00-00-03-0](#) [0282-0-01-01-00-00-03-0](#) [0275-0-01-01-00-00-03-0](#) [0272-0-01-01-00-00-03-0](#) [0270-0-01-01-00-00-03-0](#) [0265-0-01-01-00-00-03-0](#) [8000-0-01-80-00-00-03-0](#) [0265-0-01-15-00-00-03-0](#) [0265-0-01-21-00-00-03-0](#) [0265-0-01-34-00-00-03-0](#) [0270-0-01-15-00-00-03-0](#) [0270-0-01-21-00-00-03-0](#) [0270-0-01-34-00-00-03-0](#) [0272-0-01-15-00-00-03-0](#) [0272-0-01-21-00-00-03-0](#) [0272-0-01-34-00-00-03-0](#) [0275-0-01-15-00-00-03-0](#) [0275-0-01-21-00-00-03-0](#) [0275-0-01-34-00-00-03-0](#) [0282-0-01-15-00-00-03-0](#) [0282-0-01-21-00-00-03-0](#) [0282-0-01-34-00-00-03-0](#) [0700-0-00-15-00-00-03-0](#) [0700-0-00-21-00-00-03-0](#) [0700-0-00-34-00-00-03-0](#) [3408-2-00-15-00-00-03-0](#) [3603-0-07-34-00-00-08-0](#) [8000-0-01-15-00-00-03-0](#) [8000-0-01-21-00-00-03-0](#) [8000-0-01-34-00-00-03-0](#) [9976-0-00-01-00-00-03-0](#) [9976-0-00-15-00-00-03-0](#) [9976-0-00-21-00-00-03-0](#) [8001-0-19-80-07-80-10-0](#) [8001-0-19-01-07-27-10-0](#) [0265-0-01-00-00-00-03-0](#) [0275-0-01-00-00-00-03-0](#) [8001-0-19-01-07-01-10-0](#) [0282-0-01-00-00-00-03-0](#) [0270-0-01-00-00-00-03-0](#) [3408-2-00-00-00-00-03-0](#) [8000-0-01-00-00-00-03-0](#) [9976-0-00-00-00-00-03-0](#) [8001-0-19-80-07-27-10-0](#) [3603-0-07-00-00-00-08-0](#) [8001-0-19-15-07-27-10-0](#) [8006-0-00-00-00-00-03-0](#) [0272-0-01-00-00-00-03-0](#) [0700-0-00-00-00-00-03-0](#) [3408-1-00-00-00-00-03-0](#)