

THIS COPY IS PROVIDED ON A RESTRICTED BASIS AND IS NOT TO BE USED IN ANY WAY DETRIMENTAL TO THE INTERESTS OF PANDUIT CORP.

PANDUIT PART #	STUD SIZE		DIMENSIONS in. [mm]				
	ENGLISH	METRIC	L ± .03 [0,8]	W ± .01 [0,3]	C ± .015 [0,4]	M ± .03 [0,8]	H ± .01 [0,3]
P10-6F	#6	M3,5	.75 [19,1]	.31 [7,9]	.22 [5,6]	.55 [14,0]	.15 [3,8]
P10-8F	#8	M4	.78 [19,8]	.37 [9,4]	.22 [5,6]	.55 [14,0]	.17 [4,3]
P10-10F	#10	--	.78 [19,8]	.37 [9,4]	.23 [5,8]	.55 [14,0]	.20 [5,1]
PM6-5F*	--	M5	.76 [19,4]	.37 [9,4]	.28 [7,1]	.55 [14,0]	.21 [5,3]
P10-14F	1/4"	M6	.89 [22,6]	.50 [12,7]	.30 [7,6]	.60 [15,2]	.27 [6,9]

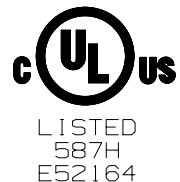
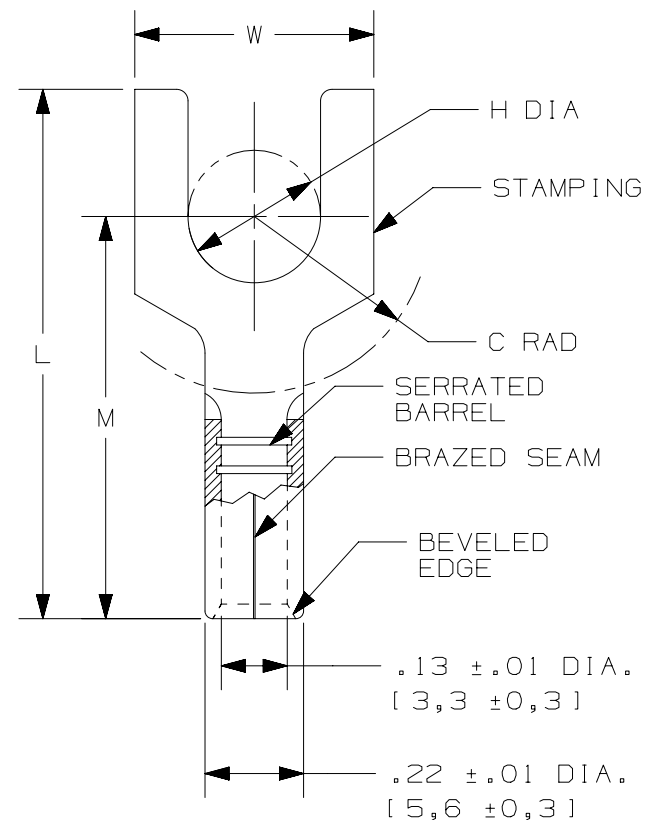
*NOT CSA CERTIFIED

NOTES:

- UL LISTED & CSA CERTIFIED FOR:
 - A. #12-10 AWG [4,0-6,0 mm²] SOLID OR STRANDED COPPER WIRE
 - B. 302°F [150°C] MAX. OPERATING TEMPERATURE
 - C. 2000 VOLTS MAX
- SEE www.panduit.com FOR PACKAGE QUANTITIES
- MATERIAL:
 - A. STAMPING: .04" [1,0] THK COPPER, TIN PLATED
- DIMENSIONS IN BRACKETS ARE METRIC EQUIVALENT
- WIRE STRIP LENGTH: 9/32" ^{+1/32}₋₀ [7,1mm ^{+0,8}₋₀]

UL & CSA TOOLS
CT-100A
CT-200
CT-600-A (CT-570CH)
CT-1570
CT-1701 (P10)
CT-2500 (CT-2570CH)

PANDUIT APPROVED TOOLS
CT-160
CT-260



REV	DATE	BY	CHK	APR	DESCRIPTION	ECN
10	05/17	JHNU	TMR	RGB	ADDED CSA BACK TO DRAWING, UPDATED TOOL CHART FORMAT	N41256BB-A41256
09	06/14	MBY	JHNU	RGB	REVISED NOTES, MOVED TOOLS TO TABLE, REVISED CERTIFICATION	N41256BB-A41256
08	09.19.12	JBN	LCA	VMB	ADDED METRIC EQUIVALENT. REVISED NOTES. UPDATED TO CURRENT STANDARDS.	A41256

TITLE	
FORK, NON-INSULATED, #12-10	
CUSTOMER DRAWING	
ITEM REVISION NAME	N41256BB/10
DATASET FILE NAME	N41256BB_DC/10A
UNLESS OTHERWISE SPECIFIED, DIMENSIONAL TOLERANCES ARE: IN [mm]	
.X ±	.XXX ±
.XX ±	ANGLES ±
THIRD ANGLE PROJECTION	
DRAWING NUMBER: A41256	
DRAWN BY: DAW	DATE: []
CHK: CJH	SCALE: N.T.S.
SHEET 1 OF 1	
SIZE: A	

D101000DA/12

Mouser Electronics

Authorized Distributor

Click to View Pricing, Inventory, Delivery & Lifecycle Information:

[Panduit:](#)

[P10-10F-L](#) [P10-14F-L](#) [P10-14F-D](#) [P10-8F-L](#) [P10-6F-L](#) [P10-10F-Q](#) [P10-6F-Q](#) [P10-6F-D](#) [P10-10F-D](#) [P10-8F-D](#)
[P10-8F-Q](#)