

Specials

G24 / GX24 with rear-side swivel fixing
2G11 with "Red Button" for a secure fit



Your Connection to Light



With products like these,
you know why people regard us "specialists".

G24 / GX24
with rear-side
swivel fixing



Hook in, swivel in, and it's ready. This variation of the G24 / GX24 lampholders was developed to offer our customers a simple, rear-side method of fixing as an alternative to central riveting or screw-fixing. This proven design provides a long-term, stable method of fixing which does not lead to sagging of lampholders or lamps, even when heavy lamps with high power ratings are used in continuous operation, as sometimes occurs with street lighting.

2G11 - "Red Button"
for a secure fit
in special applications



No wobbling: The "Red Button lamp-holder" for 2G11 compact fluorescent lamps. The lamp is inserted into the lampholder contacts from the side. Lamp pins and lampholder contacts snap together automatically and the "Red Button" becomes a locking device. To change the lamp, it is simply pressed down and the lock is released again. In short: This lampholder system will hold any lamp securely, even where there are strong vibrations.

Lampholders for compact fluorescent lamps 2G11

26.746



pkg. wt. part-no.
250 18 g **26.746.1002.84**

For lamps TC-L
Snap in foot 25.5 x 13.3 mm
Housing: PBT
Approbations: additional cULus

T 140					CAD
-------	--	--	--	--	-----

pkg. wt. part-no.
250 18 g **26.746.1003.84**

For lamps TC-L
Snap in foot 25.5 x 13.3 mm
Housing: PBT
Approbations: additional cULus

T 140					CAD
-------	--	--	--	--	-----

pkg. wt. part-no.
250 17 g **26.746.1001.84**

For lamps TC-L
Snap in foot 25.5 x 13.3 mm
Housing: PBT
Approbations: additional cULus

- Wiring through the snap in foot or from above the fixing plate
- Slim version

T 140					CAD
-------	--	--	--	--	-----

Lampholders for compact fluorescent lamps 2G11

26.746



pkg. wt. part-no.
250 17 g **26.746.1004.84**

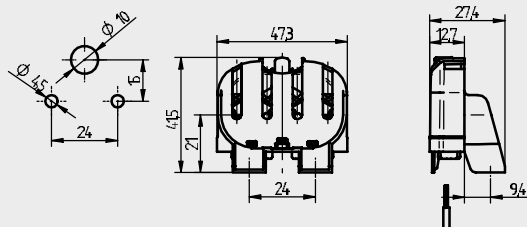
For lamps TC-L

Screw fixing horizontally

Housing: PBT

Approbations: additional cULus

- Holes \varnothing 4.5 mm
- Screws ISO 1207 - M4
- Wiring through separate opening in the fixing plate or from above the fixing plate
- Slim version



T 140 CAD

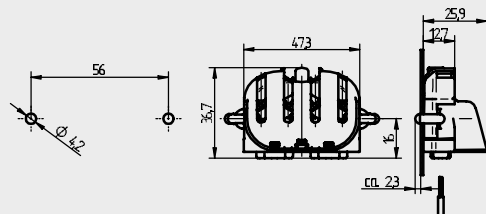
pkg. wt. part-no.
250 16 g **26.746.1005.84**

For lamps TC-L

Snap in pins

Housing: PBT

Approbations: additional cULus



T 140 CAD

pkg. wt. part-no.
250 17 g **26.746.1006.84**

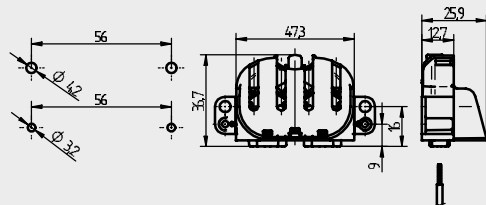
For lamps TC-L

Screw fixing vertically

Housing: PBT

Approbations: additional cULus

- Holes \varnothing 4.2 mm
- Screws ISO 1207 - M4
- Holes \varnothing 3.2 mm for self-tapping screws ISO 1481 - ST 2.9 x 9.5 - C



T 140 CAD

Signets



Signets



For tinned wire ends within the cross sectional range stated

T 140

Temperature marking



Twin push-wire terminal



For single-core cable within cross sectional range stated



Illuminated wall thickness shown in mm

2 A
250 V

Rating

CAD

CAD data available

BJB GmbH & Co. KG · Werler Straße 1 · 59755 Arnsberg
Telephone +49 29 32.9 82-0 · Fax +49 29 32.9 82-82 01
info@bjb.com · www.bjb.com

