

Low Jitter Crystal Oscillator

ABLJO

Request Samples



Check Inventory



ESD Sensitive



14.3 x 8.7 x 5.5 mm

RoHS/RoHS II Compliant

MSL Level = 1

Features

- High "Q", 3rd Overtone Crystal Technology
- Ultra Low Jitter performance 0.10 ps Max. (12kHz to 20MHz)
- Standard LVCMOS RF Output
- Wide Operating Temperature (-40°C to +85°C) standard
- ±40 ppm Max. All inclusive Stability (including Aging) over 10-years
- (17) Standard Frequencies between 80MHz & 200MHz
- 9x14mm RoHS Compliant SMT package

Applications

- Avionics
- COTS - Military communications
- Low Phase Noise Signal Sources
- High Definition TV
- Test & Measurement
- Ultra Low Jitter RF Communication Circuitry

Key Electrical Specifications

Parameters	Minimum	Typical	Maximum	Units	Notes
RF Output Frequency Range	80.00		200.00	MHz	
Standard Available Frequencies	80.00MHz, 81.920MHz, 92.160MHz, 96MHz, 98.304MHz, 100MHz, 106.250MHz, 120MHz, 122.880MHz, 125MHz, 150MHz, 155.520MHz, 156.250MHz, 160MHz, 184.32MHz, 187.5MHz, and 200MHz				
Supply Voltage	3.135	3.300	3.465	Volts	
Current Drain					
80MHz ~ 99.999MHz			25.00	mA	
100MHz ~ 149.999MHz			30.00	mA	
150MHz ~ 200MHz			40.00	mA	
Waveform	LVCMOS				
V _{OH}	0.9*V _{dd}			Volts	
V _{OL}			0.1*V _{dd}	Volts	
Symmetry	45	50	55	%	
Rise & Fall Times			3.0	ns	
Operating Temperature Range	-40		+85	°C	
Frequency Stability					
Over (-40° C to +85°C)			±25.00	ppm	
ALL effects, including Aging			±40.00	ppm	
Storage Temperature Range	-40		+90	°C	
Aging					
First Year			±2.00	ppm	
5-Years			±5.00	ppm	
10-Years			±7.00	ppm	



5101 Hidden Creek Ln Spicewood TX 78669
 Phone: 512-371-6159 | Fax: 512-351-8858
 For terms and conditions of sales, please visit:
www.abracon.com

REVISED: 09-02-22

ABRACON IS
 ISO9001-2015
 CERTIFIED

Low Jitter Crystal Oscillator

ABLJO

Request Samples



Check Inventory



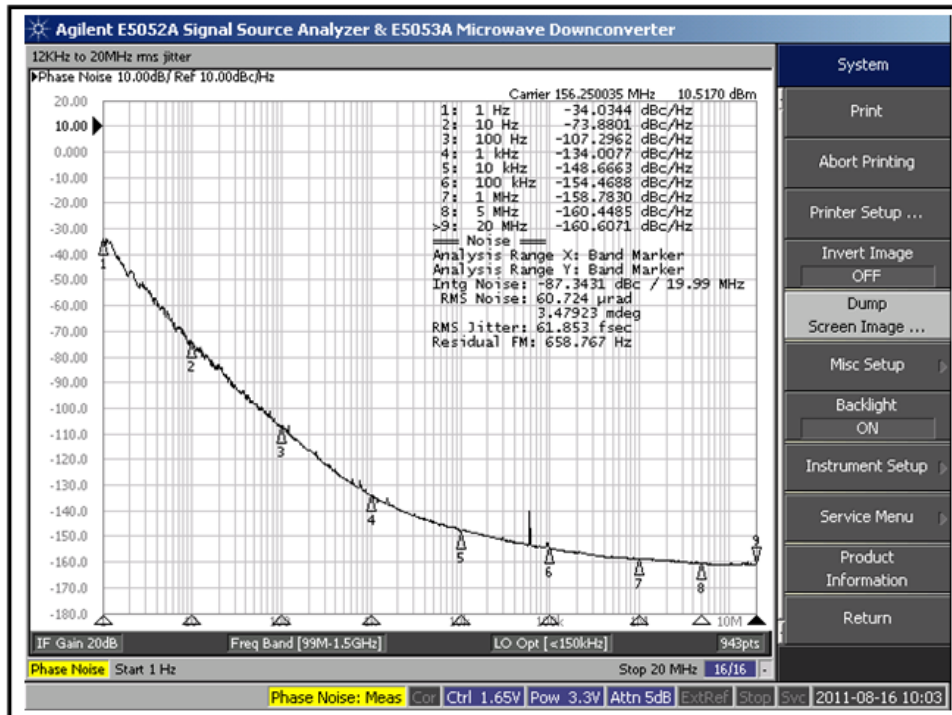
ESD Sensitive



14.3 x 8.7 x 5.5 mm
RoHS/RoHS II Compliant
MSL Level = 1

Parameters	Minimum	Typical	Maximum	Units	Notes
Phase Noise (156.25MHz Carrier)					Vdd=3.3V
@ 10 Hz offset		-73		dBc/Hz	
@ 100 Hz offset		-107		dBc/Hz	
@ 1,000 Hz offset		-134		dBc/Hz	
@ 10,000 Hz offset		-148	-140	dBc/Hz	
@ 100,000 Hz offset		-154	-150	dBc/Hz	
@ 1,000,000 Hz offset		-158	-150	dBc/Hz	
Integrated RMS Phase Jitter (12kHz ~ 20MHz BW)		75	100	Femto Seconds	0.10 ps Max.
Electrical Frequency Adjustment					
Control Voltage Range (Vc)	0.0		3.30	Volts	
Frequency Pull Range	±45.00			ppm	
Frequency Pull Slope		Positive			
Control Voltage Port Impedance	10			kΩ	
Center Control Voltage	1.45	1.65	1.85	Volts	
Control Port Linearity			±10	%	

Typical phase Noise Performance @ 156.25MHz Carrier



Low Jitter Crystal Oscillator

ABLJO

Request Samples



Check Inventory



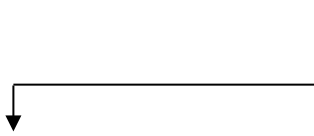
ESD Sensitive



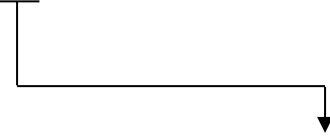
14.3 x 8.7 x 5.5 mm
RoHS/RoHS II Compliant
MSL Level = 1

Options and Part Identification

ABLJO - - Frequency (MHz) -



Frequency Pull Option	
Blank	XO (Fixed Frequency)
V	VCXO (± 45 ppm min.)



Tape & Reel Options	
Blank	< 250 units on cut tape
T	1,000 units per reel
T2	250 units per reel

Low Jitter Crystal Oscillator

ABLJO

Request Samples



Check Inventory

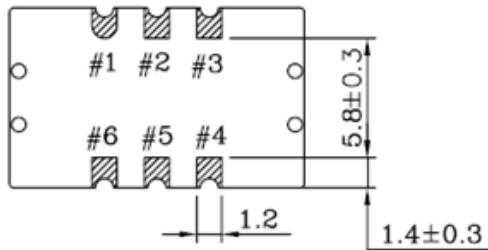
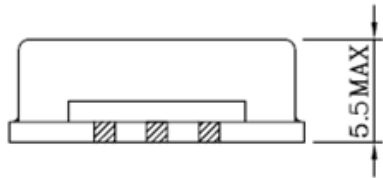
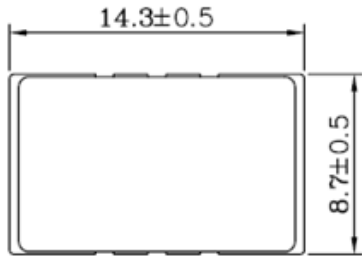


ESD Sensitive

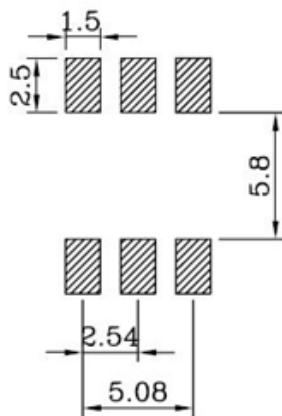


14.3 x 8.7 x 5.5 mm
RoHS/RoHS II Compliant
 MSL Level = 1

Mechanical Dimensions



Pin	Function	
	VCXO	XO
1	Vc	N.C.
2	N.C.	
3	GND	
4	Output	
5	N.C.	
6	Vdd	



Recommended Soldering Pattern

Dimensions: mm

Low Jitter Crystal Oscillator

ABLJO

Request Samples



Check Inventory



ESD Sensitive



14.3 x 8.7 x 5.5 mm
RoHS/RoHS II Compliant
MSL Level = 1

Reflow Profile [JEDEC J-STD-020]

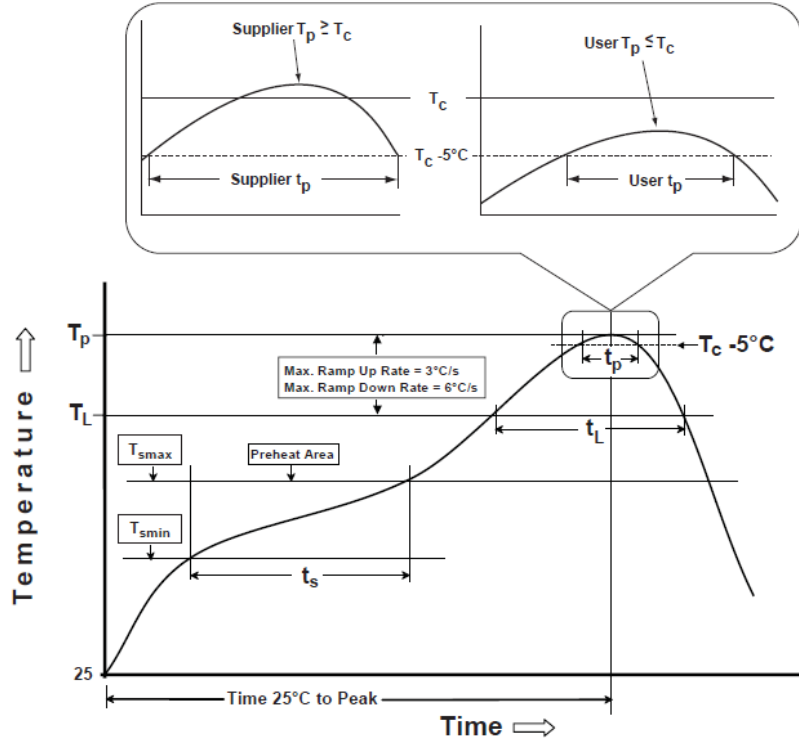


Table 1

SnPb Eutectic Process
Classification Temperatures (T_C)

Package Thickness	Volume mm ³ <350	Volume mm ³ ≥350
<2.5 mm	235 °C	220 °C
≥2.5 mm	220 °C	220 °C

Table 2

Pb-Free Process
Classification Temperatures (T_C)

Package Thickness	Volume mm ³ <350	Volume mm ³ 350-2000	Volume mm ³ >2000
<1.6 mm	260 °C	260 °C	260 °C
1.6 mm - 2.5 mm	260 °C	250 °C	245 °C
>2.5 mm	250 °C	245 °C	245 °C

Profile Feature	Sn-Pb Eutectic Assembly	Pb-Free Assembly
Preheat / soak		
Temperature minimum (T_{smin})	100°C	150°C
Temperature maximum (T_{smax})	150°C	200°C
Time (T_{smin} to T_{smax}) (t_s)	60 - 120 sec.	60 - 120 sec.
Average ramp-up rate (T_{smax} to T_p)	3°C/sec. max	3°C/sec. max
Liquidous temperature (T_L)	183°C	217°C
Time at liquidous (t_L)	60 - 150 sec.	60 - 150 sec.
Peak package body temperature (T_p)*	see Table 1	see Table 2
Time (t_p)** within 5°C of the specified classification temperature (T_C)	20 sec.	30 sec.
Ramp-down rate (T_p to T_{smax})	6°C/sec. max	6°C/sec. max
Time 25°C to peak temperature	6 min. max	8 min. max
Reflow cycles	2 max	2 max

*Tolerance for peak profile temperature (T_p) is defined as a supplier minimum and a user maximum.

**Tolerance for time at peak profile temperature (t_p) is defined as supplier minimum and a user maximum.



5101 Hidden Creek Ln Spicewood TX 78669
Phone: 512-371-6159 | Fax: 512-351-8858
For terms and conditions of sales, please visit:
www.abracon.com

REVISED: 09-02-22

ABRACON IS
ISO9001-2015
CERTIFIED

Low Jitter Crystal Oscillator

ABLJO

Request Samples



Check Inventory



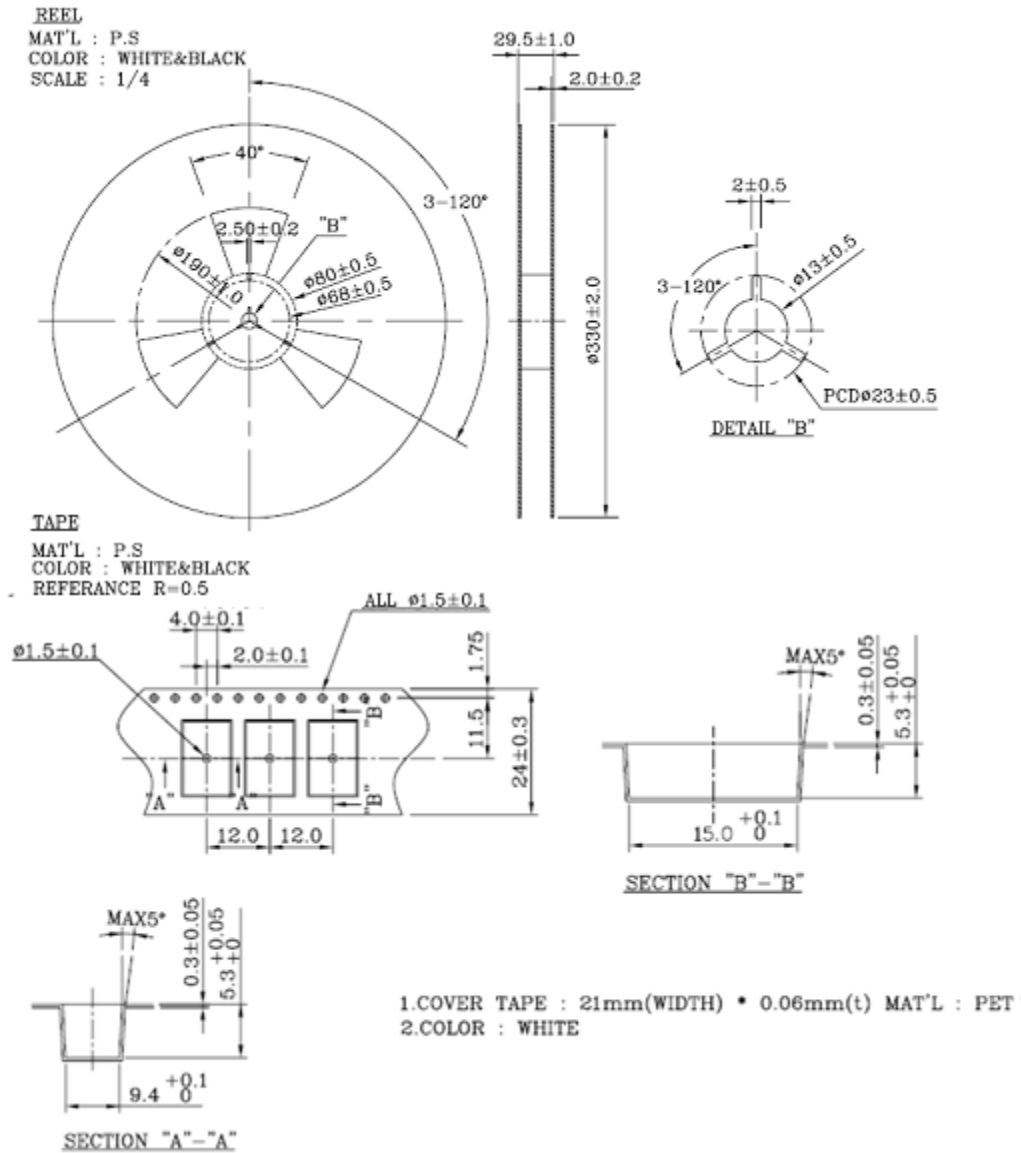
ESD Sensitive



14.3 x 8.7 x 5.5 mm
RoHS/RoHS II Compliant
 MSL Level = 1

Packaging:

(1000) units per reel standard, (250) units per reel available (option # T2)



Dimensions: mm

ATTENTION: Abracon LLC's products are COTS – Commercial-Off-The-Shelf products; suitable for Commercial, Industrial and, where designated, Automotive Applications. Abracon's products are not specifically designed for Military, Aviation, Aerospace, Life-dependent Medical applications or any application requiring high reliability where component failure could result in loss of life and/or property. For applications requiring high reliability and/or presenting an extreme operating environment, written consent and authorization from Abracon LLC is required. Please contact Abracon LLC for more information.



5101 Hidden Creek Ln Spicewood TX 78669
 Phone: 512-371-6159 | Fax: 512-351-8858
 For terms and conditions of sales, please visit:
www.abracon.com

REVISED: 09-02-22

ABRACON IS
 ISO9001-2015
 CERTIFIED

Mouser Electronics

Authorized Distributor

Click to View Pricing, Inventory, Delivery & Lifecycle Information:

ABRACON:

[ABLJO-100.000MHZ](#) [ABLJO-100.000MHZ-T](#) [ABLJO-106.250MHZ](#) [ABLJO-106.250MHZ-T](#) [ABLJO-120.000MHZ](#)
[ABLJO-120.000MHZ-T](#) [ABLJO-122.880MHZ](#) [ABLJO-122.880MHZ-T](#) [ABLJO-125.000MHZ](#) [ABLJO-125.000MHZ-T](#)
[ABLJO-150.000MHZ](#) [ABLJO-150.000MHZ-T](#) [ABLJO-155.520MHZ](#) [ABLJO-155.520MHZ-T](#) [ABLJO-156.250MHZ](#)
[ABLJO-156.250MHZ-T](#) [ABLJO-160.000MHZ](#) [ABLJO-160.000MHZ-T](#) [ABLJO-184.320MHZ](#) [ABLJO-184.320MHZ-T](#)
[ABLJO-187.500MHZ](#) [ABLJO-187.500MHZ-T](#) [ABLJO-200.000MHZ](#) [ABLJO-200.000MHZ-T](#) [ABLJO-80.000MHZ](#)
[ABLJO-80.000MHZ-T](#) [ABLJO-81.920MHZ](#) [ABLJO-81.920MHZ-T](#) [ABLJO-92.160MHZ](#) [ABLJO-92.160MHZ-T](#) [ABLJO-](#)
[96.000MHZ](#) [ABLJO-96.000MHZ-T](#) [ABLJO-98.304MHZ](#) [ABLJO-98.304MHZ-T](#) [ABLJO-V-100.000MHZ](#) [ABLJO-V-](#)
[100.000MHZ-T](#) [ABLJO-V-106.250MHZ](#) [ABLJO-V-106.250MHZ-T](#) [ABLJO-V-120.000MHZ](#) [ABLJO-V-120.000MHZ-T](#)
[ABLJO-V-122.880MHZ](#) [ABLJO-V-122.880MHZ-T](#) [ABLJO-V-125.000MHZ](#) [ABLJO-V-125.000MHZ-T](#) [ABLJO-V-](#)
[150.000MHZ](#) [ABLJO-V-150.000MHZ-T](#) [ABLJO-V-155.520MHZ](#) [ABLJO-V-155.520MHZ-T](#) [ABLJO-V-156.250MHZ](#)
[ABLJO-V-156.250MHZ-T](#) [ABLJO-V-160.000MHZ](#) [ABLJO-V-160.000MHZ-T](#) [ABLJO-V-184.320MHZ](#) [ABLJO-V-](#)
[184.320MHZ-T](#) [ABLJO-V-187.500MHZ](#) [ABLJO-V-187.500MHZ-T](#) [ABLJO-V-200.000MHZ](#) [ABLJO-V-200.000MHZ-T](#)
[ABLJO-V-80.000MHZ](#) [ABLJO-V-80.000MHZ-T](#) [ABLJO-V-81.920MHZ](#) [ABLJO-V-81.920MHZ-T](#) [ABLJO-V-92.160MHZ](#)
[ABLJO-V-92.160MHZ-T](#) [ABLJO-V-96.000MHZ](#) [ABLJO-V-96.000MHZ-T](#) [ABLJO-V-98.304MHZ](#) [ABLJO-V-98.304MHZ-](#)
[T](#) [ABLJO-100.000MHZ-T2](#) [ABLJO-106.250MHZ-T2](#) [ABLJO-120.000MHZ-T2](#) [ABLJO-122.880MHZ-T2](#) [ABLJO-](#)
[125.000MHZ-T2](#) [ABLJO-150.000MHZ-T2](#) [ABLJO-155.520MHZ-T2](#) [ABLJO-156.250MHZ-T2](#) [ABLJO-160.000MHZ-T2](#)
[ABLJO-184.320MHZ-T2](#) [ABLJO-187.500MHZ-T2](#) [ABLJO-200.000MHZ-T2](#) [ABLJO-80.000MHZ-T2](#) [ABLJO-](#)
[81.920MHZ-T2](#) [ABLJO-92.160MHZ-T2](#) [ABLJO-96.000MHZ-T2](#) [ABLJO-98.304MHZ-T2](#) [ABLJO-V-100.000MHZ-T2](#)
[ABLJO-V-106.250MHZ-T2](#) [ABLJO-V-120.000MHZ-T2](#) [ABLJO-V-122.880MHZ-T2](#) [ABLJO-V-125.000MHZ-T2](#) [ABLJO-](#)
[V-150.000MHZ-T2](#) [ABLJO-V-155.520MHZ-T2](#) [ABLJO-V-156.250MHZ-T2](#) [ABLJO-V-160.000MHZ-T2](#) [ABLJO-V-](#)
[184.320MHZ-T2](#) [ABLJO-V-187.500MHZ-T2](#) [ABLJO-V-200.000MHZ-T2](#) [ABLJO-V-80.000MHZ-T2](#) [ABLJO-V-](#)
[81.920MHZ-T2](#) [ABLJO-V-92.160MHZ-T2](#)