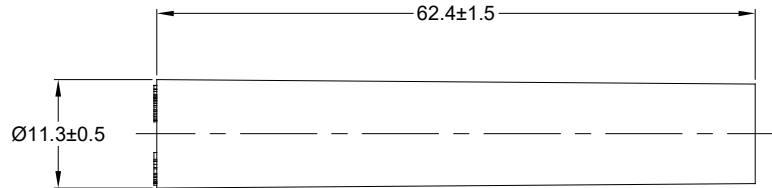
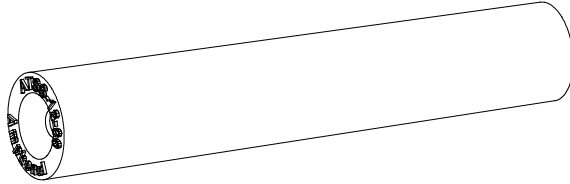


REVISIONS					
REV	ECO	DESCRIPTION	DATE	BY	APPR
A1	-	RELEASE	12APR19	SULLEN	TOMMY



NOTES: UNLESS OTHERWISE SPECIFIED

- MATERIAL:
SHELL: SILICONE RUBBER, RED
FINGER RETAINER: COPPER ALLOY
- SPECIFICATIONS:
2.1 OPERATING TEMPERATURE: -55°C TO +125°C
2.2 MOISTURE RESISTANCE: IP67
2.3 MATING CYCLE DURABILITY: 100 CYCLES
2.4 RoHS COMPLIANT
- ALL DIMENSIONS ARE FOR REFERENCE USE ONLY
- CONTACT SIZE AND WIRE RANGE:

CONTACT SIZE	MIN. INSUL O.D.	MAX. INSUL O.D.	TYPICAL WIRE RANGE	CURRENT RATING
12	3.40 mm (.134 in)	4.32 mm (.170 in)	10-14 AWG	25 AMPS

TITLE: SPEEDSPLICE SIZE 12/ENVIRONMENTAL DWG NO: ATSS-12-00 REV: A1 SH: 1 OF: 1

ATSS-12-00		REF: JS-12-00		
PART NUMBER		DESCRIPTION		ITEM
QUANTITY		MATERIALS LIST		
UNLESS OTHERWISE SPECIFIED: 1) All dimensions are in metric (mm). 2) Tolerances are as follows: 1 PL DEC ±0.30 2 PL DEC ±0.15 3 PL DEC ±0.08 Fractions ±1/64 Angles ±1°		SIGNATURES		DATE
3) Note reference =		DRAWN: SULLENZHANG		12APR19
MATERIAL SPECIFICATIONS:		CHECKED: ORION LI		12APR19
PROCESS SPECIFICATIONS:		ENGINEER:		
NEXT ASSY:		APPROVAL: TOMMY XIE		12APR19
		CUSTOMER:		
		THIS DRAWING IS SUPPLIED FOR INFORMATION ONLY. DESIGN FEATURES, SPECIFICATIONS AND PERFORMANCE DATA SHOWN HEREON ARE THE PROPERTY OF THE AMPHENOL CORPORATION. NO RIGHTS OF REPRODUCTION ARE IMPLIED. ALL DIMENSIONS ARE SUBJECT TO NORMAL MANUFACTURING VARIATIONS.		
		SIZE: B C-		DWG NO: ATSS-12-00
		SCALE: NONE		REVISION: A1
		SHEET 1 OF 1		

Amphenol

Sine Systems - www.amphenol-sine.com
44724 Morley Drive
Clinton Township, MI 48036

SPEEDSPLICE, SIZE 12,
ENVIRONMENTAL