

## Knives and Blades





## BI-METAL UTILITY BLADES

Bi-Metal is formed by welding high-speed steel edge and spring steel, having the benefit of both types: Safety & Longer Life.

The blades are safer since they will not break under normal working conditions, they help reduce the risk of injury from breaking or shattering blades. And with Bi-Metal blades lasting longer than traditional carbon blades, they result in fewer blade changes which means fewer accidental cuts.

## BI-METAL BLUE BLADES

### 1. SHATTERPROOF

The spring steel backing combined with dual hardening of the blade makes our blade more durable, and shatterproof.

### 2. LAST 3 TIMES LONGER\*

More cuts for your money.

### 3. SPRING STEEL

Allows the blade to bend without accidentally breaking.

### 4. HIGH-SPEED STEEL

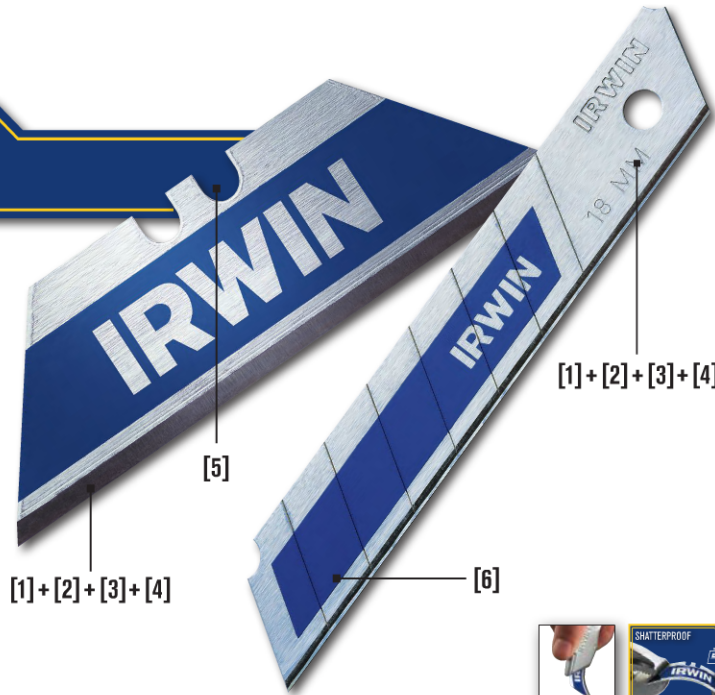
Delivers a hardened cutting edge that stay sharp 3x longer than traditional carbon blades\*.

### 5. FITS MOST KNIVES

The two-notch blade design fits most utility knives.

### 6. SOFT SNAP TECHNOLOGY

For breaking a new edge confidently.



\*vs IRWIN<sup>®</sup> carbon blades 10504245 / 10504561

## BI-METAL BLUE TRAPEZOID BLADES

Item No.	Description	EAN	Master Pack	Shelf Pack
10504240	Bi-Metal Blue Trapezoid blades - 5pk	5706915042405	25	5
10504241	Bi-Metal Blue Trapezoid blades - 10pk	5706915042412	25	5
10504243	Bi-Metal Blue Trapezoid blades - 100pk, Dispenser	5706915042436	5	1

## BI-METAL BLUE SAFETY BLADES

All the benefits of the Bi-Metal Trapezoid Blade but with a snub nose design which helps to reduce the risk of accidental puncture wounds.

Item No.	Description	EAN	Master Pack	Shelf Pack
10505823	Bi-Metal 'Blue' Safety Trap Blade 5pk	5706915058239	25	5
10505824	Bi-Metal 'Blue' Safety Trap Blade 50pk, Dispenser	5706915058246	5	1

## SNAP-OFF BI-METAL BLUE BLADES

Item No.	Description	EAN	Master Pack	Shelf Pack
10507102	Bi-Metal 'Blue' Snap-Off Blade 18mm 5pk	5706915071023	-	10
10507103	Bi-Metal 'Blue' Snap-Off Blade 18mm 8pk	5706915071030	-	10
10507104	Bi-Metal 'Blue' Snap-Off Blade 18mm 50pk	5706915071047	-	2
10507105	Bi-Metal 'Blue' Snap-Off Blade 18mm 10 x 8pk	5706915071054	50	10



Bi-Metal Safety Blade - Not Pointed





# Knives and Blades

## UTILITY BLADES

### CARBON STEEL 4POINT TRAPEZOID BLADES

This latest IRWIN® innovation combines the toughness of a traditional trapezoid blade with the increased blade tip life of a snap-off blade. Scored edges give the user 4 sharp points (vs. 2 points on a standard trapezoid blade) which doubles the life of the blade. The 4 notches enable the blade to be extended to maintain blade length after snapping off sections of the blade.



**2X LONGER LIFE\***  
\*vs. traditional carbon blades



Item No.	Description	EAN	Master Pack	Shelf Pack
10508107	4Point Carbon Steel Blade - 5pk	5706915081077	25	5
10508108	4Point Carbon Steel Blade - 10pk	5706915081084	25	5
10508110	4Point Carbon Steel Blade - 100pk, Dispenser	5706915081107	5	1



### CARBON STEEL BLADES

Item No.	Description	EAN	Master Pack	Shelf Pack
10504245	Carbon Steel Blades - 5pk	5706915042450	-	5
10504246	Carbon Steel Blades - 10pk	5706915042467	-	5
10504247	Carbon Steel Blades - 100pk, Dispenser	5706915042474	-	1



### CARBON STEEL HOOKED BLADES

Item No.	Description	EAN	Master Pack	Shelf Pack
10504249	Carbon Steel Hooked Blades - 5pk	5706915042498	-	5
10504250	Carbon Steel Hooked Blades - 10pk	5706915042504	-	5
10504251	Carbon Steel Hooked Blades - 100pk, Dispenser	5706915042511	-	1



### CARBON STEEL CARPET BLADES

Item No.	Description	EAN	Master Pack	Shelf Pack
10508111	Carpet Fixed Knife Blades	5706915081114	25	5



### SNAP-OFF CARBON STEEL BLADES

Item No.	Description	EAN	Master Pack	Shelf Pack
10504558	Carbon Steel Snap-Off Blade 25mm 5pk	5706915045581	-	5
10504559	Carbon Steel Snap-Off Blade 25mm 10pk	5706915045598	-	5
10504561	Carbon Steel Snap-Off Blade 18mm 5pk	5706915045611	-	5
10504562	Carbon Steel Snap-Off Blade 18mm 10pk	5706915045628	-	5
10504563	Carbon Steel Snap-Off Blade 18mm 50pk	5706915045635	-	1
10504567	Carbon Steel Snap-Off Blade 9mm 10pk	5706915045673	-	5
10506456	Carbon Steel Snap-Off Blade Bulk 18mm 100pk	5706915064568	-	1



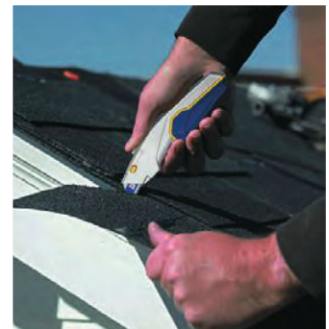
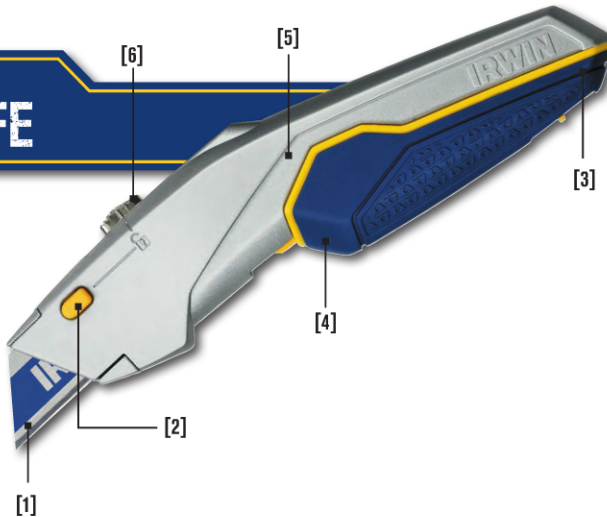
KNIVES & BLADES

## RETRACTABLE UTILITY KNIVES

A new collection of best-in-class knives developed from intensive research on the needs of professional users. This highly innovative range meets the high standards required by today's professional users – where safety, durability, convenience and comfort are the most important factors.

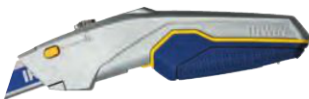
### IRWIN® PROTOUCH™ X UTILITY KNIFE

1. **BI-METAL BLADE:**  
3X Longer Life\*
2. **QUICK CHANGE BLADE MECHANISM**
3. **HINGED BLADE STORAGE**  
For up to 10 blades
4. **TRIGGER GRIP**  
For cutting on the pull
5. **LIGHTWEIGHT**
6. **3-STEP RETRACTION**  
For multiple cutting depths



### PROTOUCH™ X RETRACTABLE KNIFE

Ideal for many professional trades to be used in multiple applications, in particular roofing.



Item No.	Description	EAN	Master Pack	Shelf Pack
10508104	ProTouch™ X Retractable Knife	5706915081046	25	5

### XP RETRACTABLE KNIFE



Item No.	Description	EAN	Master Pack	Shelf Pack
10507404	XP Retractable Knife	5706915074048	40	8

### PROTOUCH™ RETRACTABLE KNIFE



Item No.	Description	EAN	Master Pack	Shelf Pack
10504236	ProTouch™ Retractable Knife	5706915042368	-	5

### GENERAL CONSTRUCTION RETRACTABLE KNIFE

A lightweight and durable retractable knife to get all jobs done. The push and slide opening mechanism provides easy tool-free blade access - for quick blade changes. A solid and durable knife with secure parts to prevent dropping/losing components.



Item No.	Description	EAN	Master Pack	Shelf Pack
10508105	General Contractor Retractable Knife	5706915081053	-	5

### PROFESSIONAL RETRACTABLE KNIFE



Item No.	Description	EAN	Master Pack	Shelf Pack
10504238	Professional Retractable Knife	5706915042382	-	5

### RETRACTABLE KNIFE



Item No.	Description	EAN	Master Pack	Shelf Pack
10507448	Retractable Knife	5706915074482	-	5



## FIXED UTILITY KNIVES

### PROTOUCH FIXED KNIFE

A feature-rich fixed knife featuring greater blade exposure, easy tool-free entry, convenient storage of 5 blades, magnetic blade retention, optimised cutting angle for minimal fatigue, and ProTouch™ for a secure grip and greater comfort.



Tool-free entry  
 Blade storage: holds up to 5 blades  
 Magnetic blade holder  
 ProTouch™ Grips for comfort and control

Item No.	Description	EAN	Master Pack	Shelf Pack
10504237	ProTouch Fixed Knife	5706915042375	-	5



### DRYWALLER FIXED KNIFE

This professional fixed knife is the ideal tool to be used in drywall cutting applications. It is specially made for working in dusty conditions that normally ruin tools. It is robust and lightweight and the slim nose for scoring makes this product unique.

Item No.	Description	EAN	Master Pack	Shelf Pack
10508103	Drywall Fixed Knife	5706915081039	-	5



### PROFESSIONAL FIXED KNIFE

Item No.	Description	EAN	Master Pack	Shelf Pack
10504239	Professional Fixed Knife	5706915042399	-	5



### FIXED KNIFE

Item No.	Description	EAN	Master Pack	Shelf Pack
10507449	Fixed Knife	5706915074499	25	5



## SPECIALITY KNIVES

### SELF-RETRACTING KNIFE

Spring-return shuttle retracts the blade at the end of a cutting action to minimise risk of injury. Multi-functional design with two blade settings for normal use and as a box cutter. Cross-nose design eliminates nose splitting. Safer to work with using captive inner components and magnetic blade retention. No-tools-access to spare blades with a bale screw. Internal blade storage for up to five blades. Bi-Metal safety blade that last up to three times longer\*

Item No.	Description	EAN	Master Pack	Shelf Pack
10505822	Self Retractable Knife	5706915058222	-	5



### FOLDING KNIFE

This high-quality and compact knife design features a 45° quick-change mechanism to increase both productivity and safety. In addition, the knife features an anchored belt clip, extended thumb ledge, and wire stripper. The knife comes with a Bi-Metal utility blade.

Item No.	Description	EAN	Master Pack	Shelf Pack
10507695	Folding Knife	5706915076950	30	10



### CARPET FIXED KNIFE

Item No.	Description	EAN	Master Pack	Shelf Pack
10508106	Carpet Fixed Knife	5706915081060	25	5



\*versus IRWIN® carbon blades #10504245

**Auto-load** mechanism enables fast blade changes  
**Self-locking** blade slider for fast blade adjustment on medium duty tasks  
**Blade storage** for three blades inside the removable cartridge  
**Durable** solid cast aluminium body with a steel blade guide  
**ProTouch™ grip** provides excellent control  
**Slim nose** design for maximum visibility of the cutting surface  
**Impact-resistant** hinged end cap cannot be separated from body

## SNAP-OFF KNIVES

### PROTOUCH™ SNAP-OFF HEAVY DUTY KNIFE

A feature-rich, heavy-duty knife with manual screw tightening at the nose for user controlled blade security. Other features include cartridge for storing 2 blades, durable cast aluminium body with stainless steel blade guide, hinged end-cap, and ProTouch™ grip for a secure grip and greater comfort.



Item No.	Description	EAN	Master Pack	Shelf Pack
10507106	ProTouch™ Screw Snap-Off Knife, 18mm	5706915071061	-	8

### PROTOUCH™ SNAP-OFF KNIFE



Item No.	Description	EAN	Master Pack	Shelf Pack
10504553	ProTouch™ Screw Snap-Off Knife, 25mm	5706915045536	-	5
10504555	ProTouch™ Snap-Off Knife 9mm	5706915045550	-	5

### PROFESSIONAL SNAP-OFF SCREW KNIFE

Screw thread for convenient user-controlled blade fixture. Blade storage for two blades inside the removable cartridge. Strong ABS body with steel blade guide. Texture grip provides improved control. Slim nose design for maximum visibility of the cutting surface. Hinged end cap cannot be separated from body



Item No.	Description	EAN	Master Pack	Shelf Pack
10507580	Professional Screw Knife Bi-Metal Blade - 18mm	5706915075809	-	5
10507581	Professional Screw Knife Carbon Blade - 9mm	5706915075816	25	5

### SNAP-OFF SCREW KNIFE



Item No.	Description	EAN	Master Pack	Shelf Pack
10508135	Snap-Off Screw Knife - 18mm	5706915081350	-	5
10508136	Snap-Off Screw Knife - 25mm	5706915081367	-	5

### CARPET LAYER SNAP-OFF KNIFE

Solid cast aluminium body with steel blade guide provides more durability. Lightweight and durable handle for minimal fatigue. Screw thread for convenient user controlled blade fixture. Built-in metal carpet tucker for increased versatility.



Item No.	Description	EAN	Master Pack	Shelf Pack
10507843	Carpet Layer Snap-Off Knife 18mm	5706915078435	25	5

### SNAP-OFF KNIFE

A popular knife format featuring self-locking blade adjustment together with a removable end-cap which can assist breakage of each blade segment.



Item No.	Description	EAN	Master Pack	Shelf Pack
10506543	Snap-Off Knife 9mm	5706915065435	-	5
10506546	Snap-Off Knife Bulk 9mm 24pk	5706915065466	120	24
10506544	Snap-Off Knife 18mm	5706915065442	-	5
10506547	Snap-Off Knife Bulk 18mm 24pk	5706915065473	120	24
10507446	Snap-Off Knife Bulk with 18mm Bi-Metal Blade 100pk	5706915074468	-	100