



## EX-ZS 335-11Z-3G/D

- Snap action with constant contact pressure up to switching point
- Explosion protection for ATEX Zones 2 and 22
- Metal enclosure
- Good resistance to oil and petroleum spirit
- 40,5 mm x 76 mm x 38 mm
- Actuator heads can be repositioned by 4 x 90°
- Ex-certified screwed cable gland
- Mounting details to EN 50041
- 1 Cable entry M 20 x 1.5
- Ex certified

## Data

### Ordering data

Product type description	EX-ZS 335-11Z-3G/D
Article number (order number)	101188901
EAN (European Article Number)	4030661348889
eCl@ss number, Version 9.0	27-27-26-01
eCl@ss number, Version 11.0	27-27-26-01
ETIM number, version 7.0	EC000030
ETIM number, version 6.0	EC000030

### Explosion protection

Explosion protection: regulations	BG-GS-ET-15 EN 60079-0 EN 60079-15 EN 60079-31 EN 60947-5-1
-----------------------------------	---

Explosion protection zones	22 2
Explosion protection category	3D 3G
Explosion protection designation	⊕ II 3G Ex nC IIC T5 Gc X ⊕ II 3D Ex tc IIIC T90°C Dc X
Manufacturer declaration	ATEX Zone 2 and 22

## General data

Housing construction form	Norm construction design
Actuator type to DIN EN 50041	B
Enclosure material	Aluminium
Enclosure coating material	painted
Material of the contacts, electrical	Silver
Gross weight	225 g

## General data - Features

Safety functions	Yes
Number of auxiliary contacts	1
Number of safety contacts	1

## Safety appraisal

Standards	EN ISO 13849-1
Mission Time	20 Year(s)

## Safety appraisal - Safety outputs

B10d Normally-closed contact (NC)	20,000,000 Operations
-----------------------------------	-----------------------

## Mechanical data

Actuating element	Plunger
Mechanical life, minimum	30,000,000 Operations
Impact energy, maximum	4 J
Actuating force, minimum	12 N
Actuating speed, maximum	0.5 m/s
Note Bounce duration	Bounce duration in accordance with actuating speed

### **Mechanical data - Connection technique**

Terminal Connector	Screw terminals M20 x 1.5
Cable cross-section of the cable glands, minimum	7 mm
Cable cross-section of the cable glands, maximum	12 mm
Cable section, minimum	0.75 mm <sup>2</sup>
Cable section, maximum	2.5 mm <sup>2</sup>
Note (Cable section)	All indications about the cable section are including the conductor ferrules.
Wire cross-section	13 AWG

### **Mechanical data - Dimensions**

Length of sensor	38 mm
Width of sensor	40.5 mm
Height of sensor	103.5 mm

### **Ambient conditions**

Degree of protection	IP67
Ambient temperature, minimum	-20 °C
Ambient temperature, maximum	+60 °C

### **Ambient conditions - Insulation value**

Rated insulation voltage $U_i$	500 V
Rated impulse withstand voltage $U_{imp}$	6 kV

## Electrical data

Thermal test current	10 A
Utilisation category AC-15	230 VAC
Utilisation category AC-15	4 A
Utilisation category DC-13	24 VDC
Utilisation category DC-13	1 A
Switching element	NO contact, NC contact
Switching principle	Snap switch element
Switching frequency	5,000 /h
Switchover time, maximum	2 ms

## Ordering code

Product type description:

EX-(1)(2) 335-(3)Z(4)-(5)-(6)-(7)-3G/D

---

(1)	
<b>Z</b>	Snap action
<b>T</b>	Slow action (not for AF/S)
(2)	
<b>S</b>	Plunger S
<b>R</b>	Roller plunger R
<b>H</b>	Roller lever H
<b>10H</b>	Rod lever 10H
<b>7H</b>	Roller lever 7H
<b>7H-2138</b>	Roller lever 7H for position switches with safety function
<b>1K</b>	Offset roller lever 1K
<b>3K</b>	Angle roller lever 3K
(3)	
<b>11</b>	1 NO contacts/1 NC contact
<b>02</b>	2 NC contact
<b>20</b>	2 NO contacts (not suitable for safety applications)
<b>01/01</b>	1 NC contact left / 1 NC contact right
<b>12</b>	1 NO contact/2 NC contacts
<b>03</b>	3 NC contact
(4)	
<b>H</b>	Slow action with staggered contacts
<b>UE</b>	Slow action with overlapping contacts
(5)	
<b>1297</b>	Enclosure with transverse slotted holes
(6)	
<b>2138</b>	Roller lever 7H for position switches with safety function
(7)	

---

# Pictures

## Product picture (catalogue individual photo)

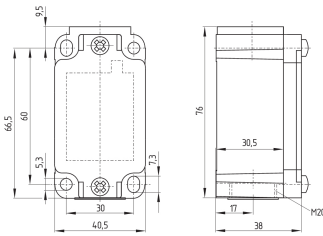


ID: k335sf01

| 939.8 kB | .jpg | 352.778 x 759.178 mm - 1000 x 2152 px - 72 dpi

| 87.8 kB | .png | 74.083 x 159.456 mm - 210 x 452 px - 72 dpi

## Dimensional drawing basic component



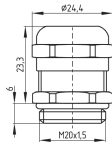
ID: k-335g01

| 27.9 kB | .cdr |

| 4.1 kB | .png | 74.083 x 52.211 mm - 210 x 148 px - 72 dpi

| 126.8 kB | .jpg | 352.778 x 248.708 mm - 1000 x 705 px - 72 dpi

## Dimensional drawing basic component

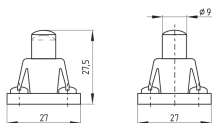


ID: 1xzm1g07

| 2.5 kB | .png | 74.083 x 51.153 mm - 210 x 145 px - 72 dpi

| 46.3 kB | .jpg | 352.778 x 243.769 mm - 1000 x 691 px - 72 dpi

## Dimensional drawing actuator



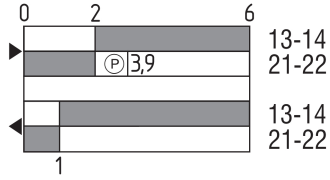
ID: 1s336g01

| 48.9 kB | .cdr |

| 2.7 kB | .png | 74.083 x 52.211 mm - 210 x 148 px - 72 dpi

| 52.6 kB | .jpg | 352.778 x 248.003 mm - 1000 x 703 px - 72 dpi

## Switch travel diagram



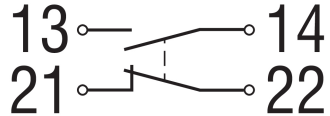
ID: kr335s12

| 25.9 kB | .cdr |

| 2.4 kB | .png | 74.083 x 39.511 mm - 210 x 112 px - 72 dpi

| 67.0 kB | .jpg | 352.778 x 188.031 mm - 1000 x 533 px - 72 dpi

## Diagram



ID: k1o1sk01

| 52.2 kB | .jpg | 352.778 x 143.581 mm - 1000 x 407 px - 72 dpi

Schmersal, Inc., 15 Skyline Drive, Hawthorne, NY 10532

The details and data referred to have been carefully checked. Images may diverge from original. Further technical data can be found in the manual. Technical amendments and errors possible.

Generated on: 04/01/2022, 16:00