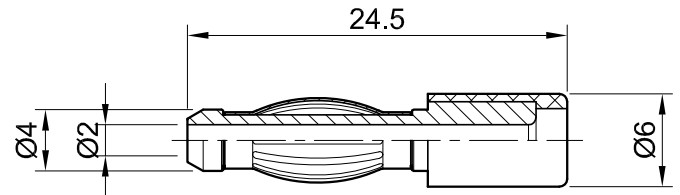
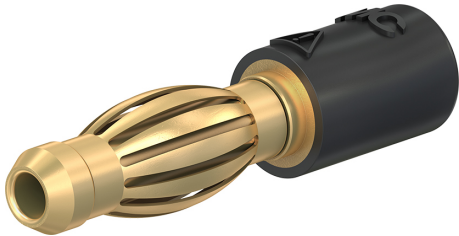


R4/2-A



Item number 24.0106-*

Insulated, Ø 4 mm plug, made of brass, with spring-loaded MULTILAM. Ø 2 mm rigid socket in insulator accepting spring-loaded Ø 2 mm plugs (pluggable on both sides).

Technical data	
Diameter of plug system	4 mm; 2 mm
Rated Values	30 V, 25 A / 60 V, 25 A
Surface treatment electrical contact	Au
Base material electrical contact	CuZn
Standard color(s) *	21 22 23
Optional color(s)	24
Test accessory acc. to	IEC EN 61010-031
User-Information	I 097