

A range of professional chassis mounting sockets, designed for panel mounting via two flange fixing screws. These sockets mate with all standard DIN plugs, but are specifically designed for the Ring Lock Plug Range (592 SERIES), with a quick and simple quarter-turn of the locking ring to secure the plug in place. Can be colour coded via an interchangeable plastic ring, available in six colours.

RoHS
2002/95/EC
Compliant

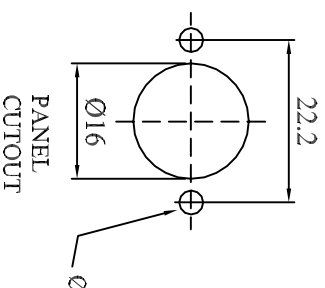
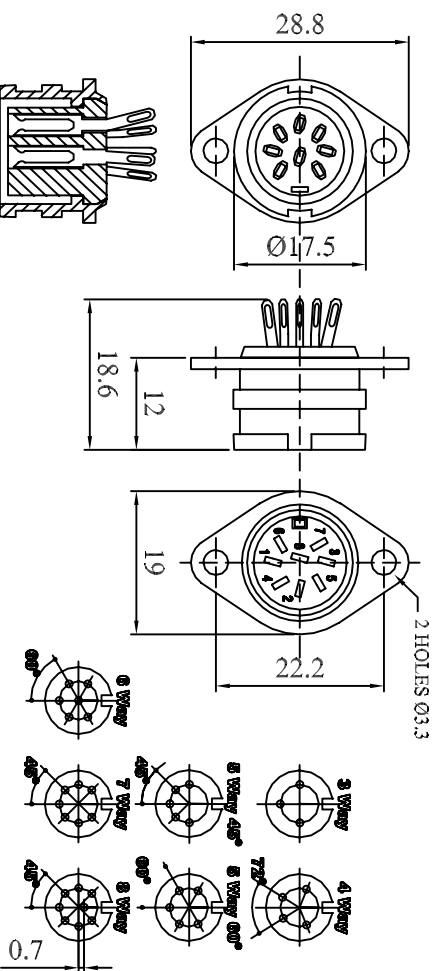
MATERIALS
HOUSING
MOULDING
CONTACTS

: Mazak,
Bright Nickel Plated
: NORYL SE1
: Brass,
Silver Plated

Product Specification

Test Voltage: 1000 V d.c
Current Rating: 4 A
Insulation Resistance: 10^{11} Ω min at 100 V d.c
Contact Resistance: 10^{11} Ω max
Capacity (mated): 3pF
Temperature Range: -25°C to +75°C

Dimensions



Type	Deltron No
3 Way	593-0300
4 Way	593-0400
5 Way 45°	593-0500
5 Way 60°	593-0510
6 Way	593-0600
7 Way	593-0700
8 Way	593-0800

CONVERTED FROM PS0810 ISS3 (19.06.96) IN JAN 2003

Drgn No **593 SERIES**

TITLE RING LOCK DIN CONNECTORS CHASSIS SOCKET

ALL DIMENSIONS IN MM
ANGLES IN DECIMAL DEGREES



N: \SETUP\MD_TEMP\PLATES\Deltron components.BMP

SSUE **6**

GENERAL SPECIFICATION
FOR **593 SERIES**

CUSTOMER

Aprvd Date 20/07/06

Aprvd By BFS

Drwn by BS

Scale: NTS

Sheet 1 / 1

Deltron Emcon Limited E-Mail components@deltron-emcon.com, Website www.deltron-emcon.com. Phone +44 1724 273200 Fax +44 1724 270230

N: \SETUP\MD_TEMP\PLATES\EMCON 1000.jpg