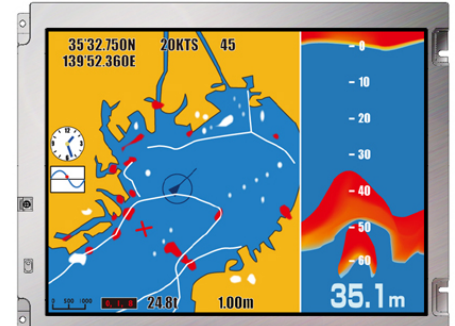


[Features]

- **ColorXcell^{*1}**
- Adoption of T-EVT(Transmissive-Enhanced View TFT))
- High luminance(800cd/m²)
- High contrast(900:1)
- 16.77M/262K colors (LVDS RGB 8-bit/6-bit)
- Wide temperature(-30°C to +80°C)
- Reversible-scan direction
- Long-life LED backlight^{*2}



| | |
|-----------------------------|--|
| Pixel | 800(H) x 600(V) |
| Display area | 211.2(H) x 158.4(V) mm 10.4 inches (26cm) |
| Display color | 16,777,216 colors/ 262,144 colors |
| Pixel pitch | 0.264(H) x 0.264(V) mm |
| Luminance | 800cd/m ² (typ.) |
| Contrast ratio | 900:1 (typ.) |
| Viewing angle ^{*3} | Up: 80°,Down: 80°,Left: 80°,Right: 80° |
| Response time ^{*4} | 18ms (typ.) |
| Signal system | LVDS 1-port RGB 8-bit/6-bit |
| Power supply voltage | 3.3V |
| Power consumption | 6.3W (typ.) |
| Operating temperature | -30°C to +80°C |
| Storage temperature | -30°C to +80°C |
| Polarizer surface | Clear + Antireflection |
| Module size | 243.0 (typ.) x 185.1 (typ.) x 11.0 (max.) mm |
| Weight | 475g (typ.) |
| Backlight | LED backlight(Replaceable) |
| LED driver | 104PW01F |

*1: ColorXcell Technology (Color Enhancement)

*2: 70k hours long life LED

*3: Contrast ration ≥ 10:1

*4: Ton+Toff (10%←→90%)

*All information is subject to change without notice.

*Screen images are simulated.

<Tianma Japan web site>

Japanese <https://www.tianma.co.jp/jp>

English <https://www.tianma.co.jp/en>

Mouser Electronics

Authorized Distributor

Click to View Pricing, Inventory, Delivery & Lifecycle Information:

[Tianma:](#)

[NL8060BC26-35C](#)