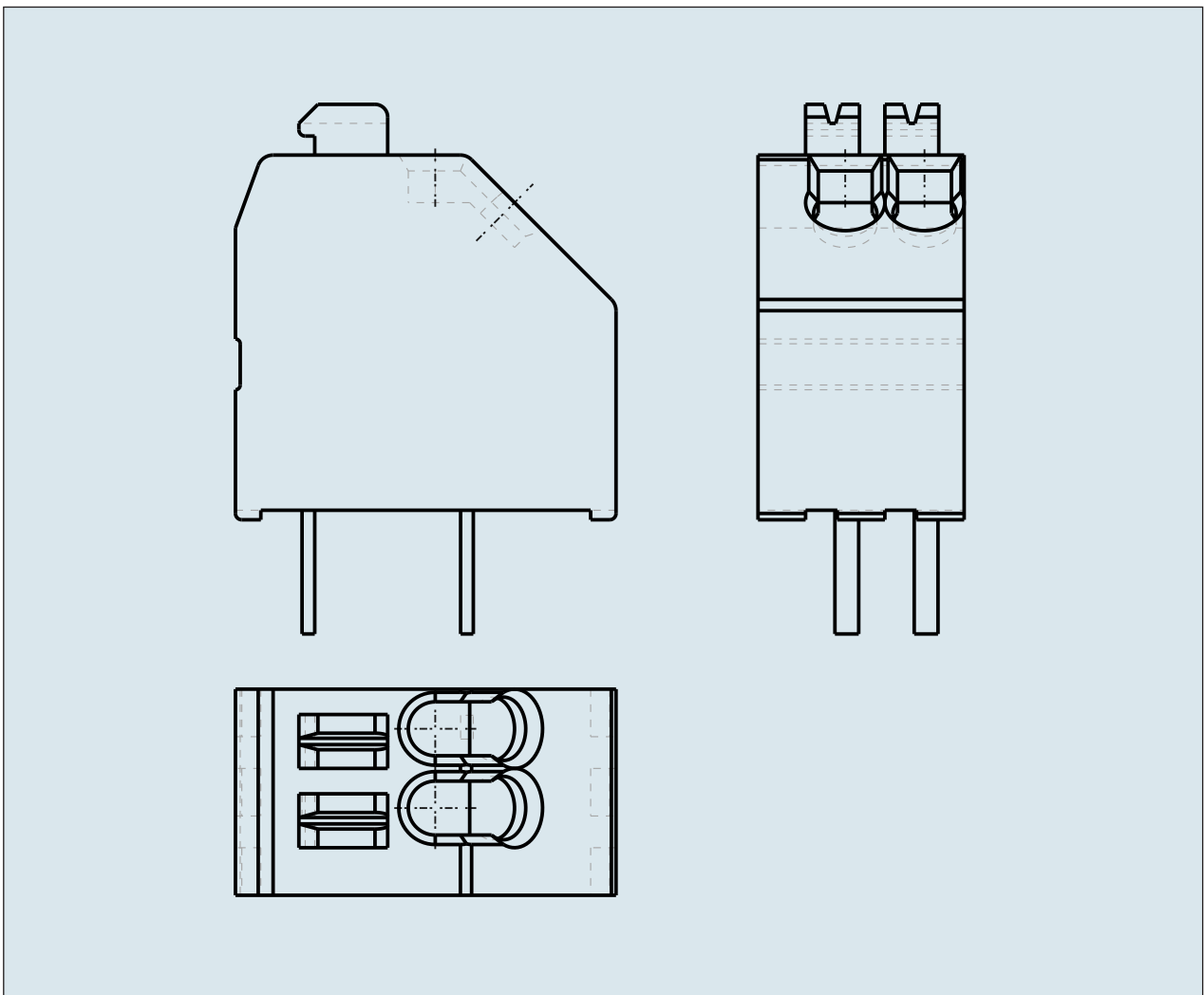
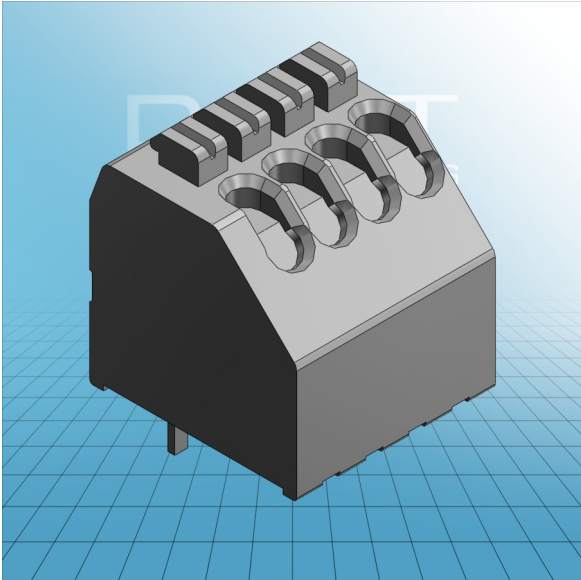


**1-CONDUCTOR PCB TERMINAL  
STRIP 1 SOLDER PIN / POLE  
STAGGERED PIN SPACING 2.5 MM / 0.  
098 IN WITH PUSH BUTTONS**



**1-CONDUCTOR PCB TERMINAL  
STRIP 1 SOLDER PIN / POLE  
STAGGERED PIN SPACING 2.5 MM / 0.  
098 IN WITH PUSH BOTTONS  
250-402 TO 250-424**

|   |   |
|---|---|
| <b>ITEM-NO. (ITEM-NO.)</b>                                  | 250-404                                   |
| <b>DIAMETER1 (Cross section / mm<sup>2</sup>)</b>           | 0.2 - 0.5                                 |
| <b>DIAMETER2 (Cross section / AWG)</b>                      | 24 - 20                                   |
| <b>Strip length (Strip length / mm)</b>                     | 8.5 - 9.5                                 |
| <b>Measured voltage (Measured voltage / V)</b>              | 160                                       |
| <b>Measured shock voltage (Measured shock voltage / kV)</b> | 2.5                                       |
| <b>Pollution degree (Pollution degree)</b>                  | 2   |
| <b>Current intensity (Current intensity / A)</b>            | 4   |
| <b>RM (PIN SPACING / mm)</b>                                | 2.5                                       |
| <b>P (NO. OF POLES)</b>                                     | 4   |
| <b>Height (Height / mm)</b>                                 | 13.1                                      |
| <b>Width (Width / mm)</b>                                   | 11.5                                      |
| <b>Depth (Depth / mm)</b>                                   | 12  |
| <b>No. of connection Points (No. of connection Points)</b>  | 4   |
| <b>No. of potentials (No. of potentials)</b>                | 4   |
| <b>COLOR (COLOR)</b>  | grau                                      |
| <b>WEIGHT (WEIGHT / g)</b>                                  | 1.564                                     |
| <b>Comment (Comment)</b>                                    | L = (No. of poles x Pin Spacing) + 1.5 mm |
| <b>Dimensions (Dimensions)</b>                              | 1.1 -0.1 mm                               |