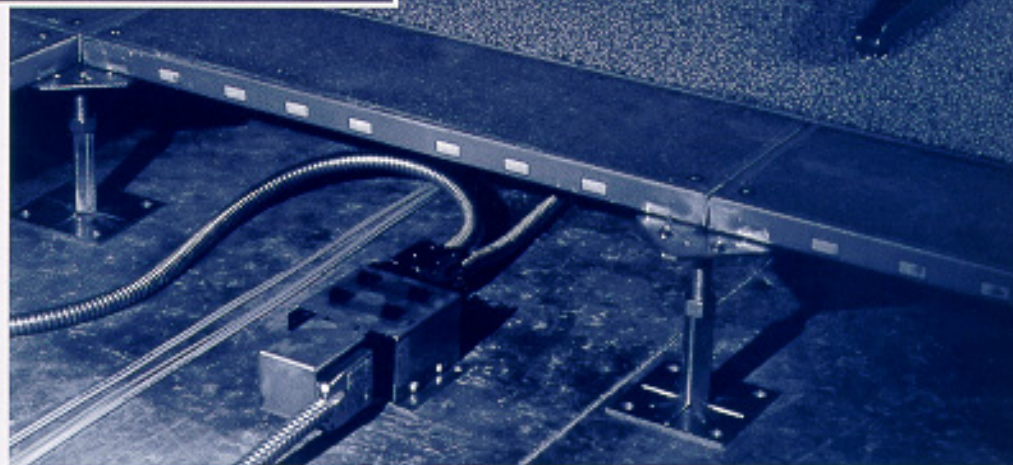


AMPINERGY

Modular Zone Wiring System



AMPINERGY Modular Wiring System complies with all agency standards for the use of manufactured wiring systems. Typical applications are providing power in modular office panels, under access or raised flooring systems, and above ceilings.

An important feature of the AMPINERGY System is that it can economically and easily be used to power existing unpowered office panels. All components are available with minimal lead times. You can even purchase unpowered, new furniture panels and add power at your locations, at your convenience.

The Access Floor Workstation Module from AMP links everything together. It provides an access point through the raised floor maximizing the use of technology in power and data communication products, all in an aesthetically pleasing unit.

It accommodates from two to five faceplates in any combination of power, data, and communication products. Access Floor Workstation Modules are available in various styles and in-box depths ranging from 2-1/2" to 5-1/4".

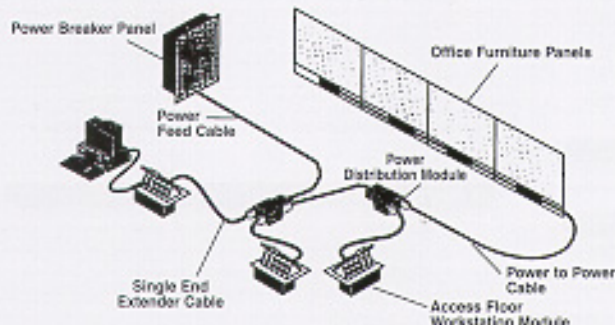
Moveable separator plate segregates power from voice and data components.

Product Facts

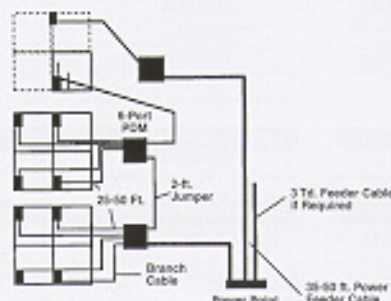
- Each zone supports up to 27 Workstations
 - Up to six (6) port Power Distribution Modules
 - 27 Access Floor Workstation Modules with 2 Duplex Receptacles
 - Four-to-six receptacles/circuit
- 12 Circuits
 - Three may be dedicated
 - Five and eight wire capability

Features

- Reusable and reconfigurable
- Easy to install - reduces installation time and expense
- Allows for dedicated circuits
- Factory terminated cable assemblies
- Allows for circuit load balancing by simply changing the duplex receptacle
- Can be integrated with zone communication wiring
- Flexible cable saves installation labor up to 40%



Underfloor Zone Wiring System



Work Area Layout for Zone Wiring

AMPINNERGY

Modular Zone Wiring System

Single Junction Box (2 Receptacles)

Bracket Mount 5-Wire Part Number 556887-1, 8-Wire Part Number 556888-1
Snap-In Mount 5-Wire Part Number 556209-1, 8-Wire Part Number 556124-1
Lug Mount 5-Wire Part Number 556217-1, 8-Wire Part Number 556132-1
Wide Lug Mount 5-Wire Part Number 557634-1, 8-Wire Part Number 557635-1
Tri-plex Lugless 8-Wire Part Number 557802-2
Quad-plex Lugless 8-Wire Part Number 557950-1

Multiplex Junction Box (4 Receptacles)

Bracket Mount 5-Wire Part Number 556886-1, 8-Wire Part Number 556946-1
Snap-In Mount 5-Wire Part Number 555844-1, 8-Wire Part Number 555843-1
Lug Mount 5-Wire Part Number 555848-1, 8-Wire Part Number 555946-1

Power Distribution Module

4 Port/5 Wire Part Number 555173-2, 4 Port/8 Wire Part Number 556173-1
6 Port/5 Wire Part Number 556794-2, 6 Port/8 Wire Part Number 556794-1

Low Profile Floor Power Distribution Module

4 Port/5 Wire Part Number 406221-2, 4 Port/8 Wire Part Number 406221-1
6 Port/5 Wire Part Number 406221-2, 6 Port/8 Wire Part Number 406221-2

Power Transition Unit

1 Line Connector, 5 Wire Part Number 556190-1
2 Line Connector, 5 Wire Part Number 556190-2

Junction Box Raceway Mounting Brackets

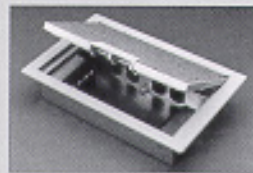
Steelcase 9000 Standard Bracket Part Number 556920-1 (fits 556887-1 and 556888-1)
Bezel Part Number 557693-1
Herman Miller Action Office I Standard Bracket Part Number 557737-1 (fits 556887-1 and 556888-1)
Haworth Standard Bracket Part Number 557221-1 (fits 556887-1 and 556888-1)
Steelcase Avenir Standard Bracket Part Number 556920-1 (fits 556887-1 and 556888-1)
Herman Miller Action Office II Offset Bracket Part Number 558826-1 (fits 556887-1 and 556888-1)
Herman Miller Action Office I, for 24" Panel Bracket Part Number 558216-1 (fits 556887-1 and 556888-1)
Herman Miller Action Office I Offset Bracket Part Number 558478-1 (fits 556887-1 and 556888-1)
AMPINNERGY Blank Faceplate Insert Part Number 558657 (-1 Black, -2 Almond, -4 NEMA Gray)

Power Strip 8-15 AMP Outlets, 1-Line Part Number 557958-1, 2-Line Part Number 557958-2

Desktop Mount Outlet, Power Part Number 556222-1, Data Part Number 556263-1



5 Gang
Part Number 557601*



4 Gang
Part Number 406376*



3 Gang
Part Number 558716*



2 Gang
Part Number 558718*

* Add Suffix for color:
-1 Light Almond, -2 Stone Gray,
-3 Black, -4 NEMA Gray

AMPINNERGY Cable Assemblies

Note: Other lengths can be made available - Contact AMP Sales

8 Wire Power to Power

Part Number	Length	
	(inches)	(cm)
5-556127-7	18	[45.72]
2-556127-4	24	[60.96]
1-556127-5	36	[91.44]
5-556127-0	45	[114.30]
1-556127-5	48	[121.92]
556127-8	68	[172.72]
3-556127-1	70	[177.80]
556127-9	80	[203.20]
6-556127-4	82	[208.28]
1-556127-0	92	[233.68]
3-556127-2	96	[243.84]
5-556127-6	120	[304.80]
3-556127-9	144	[365.76]
3-556127-3	180	[457.20]
2-556127-3	264	[670.56]
5-556127-5	600	[1524.00]

8 Wire Power Entry

555856-3	48	[121.92]
555856-8	60	[152.40]
555856-4	72	[182.88]
1-555856-1	96	[243.84]

8 Wire Line Entry

556148-8	96	[243.84]
----------	----	----------

8 Wire Power to Line

556731-8	36	[91.44]
556731-1	72	[182.88]

5 Wire Power to Power

Part Number	Length	
	(inches)	(cm)
3-556212-0	20	[50.80]
2-556212-0	24	[60.96]
3-556212-3	36	[91.44]
1-556212-5	48	[121.92]
556212-8	68	[172.72]
1-556212-7	72	[182.88]
1-556212-0	92	[233.68]
5-556212-1	96	[243.84]
3-556212-1	120	[304.80]
2-556212-7	144	[365.76]
2-556212-3	180	[457.20]
1-556212-9	264	[670.56]
4-556212-8	600	[1524.00]

5 Wire Power Entry

555858-3	48	[121.92]
555858-4	72	[182.88]
1-555858-2	96	[243.84]
555858-5	144	[365.76]
1-555858-3	240	[609.60]

5 Wire Line Entry

3-556145-1	600	[1,524.00]
------------	-----	------------

5 Wire Power to Line

556730-2	132	[335.28]
----------	-----	----------

Duplex Receptacles-15 AMP Listed*

Part Number	Line	Panel Thickness (inches/mm)
406112-1	1	3.125 [79.38]
406113-1	2	3.125 [79.38]
406114-1	3	3.125 [79.38]
406115-1	4	3.125 [79.38]
406116-1	1G	3.125 [79.38]
406117-1	2G	3.125 [79.38]
406118-1	3G	3.125 [79.38]
406119-1	4G	3.125 [79.38]
406120-1	5G	3.125 [79.38]
406121-1	1	3.500 [88.90]
406122-1	2	3.500 [88.90]
406123-1	3	3.500 [88.90]
406124-1	4	3.500 [88.90]
406125-1	1G	3.500 [88.90]
406126-1	2G	3.500 [88.90]
406127-1	3G	3.500 [88.90]
406128-1	4G	3.500 [88.90]
406623-1	1	3.250 [82.55]
406624-1	2	3.250 [82.55]
406625-1	3	3.250 [82.55]
406626-1	4	3.250 [82.55]
406627-1	1G	3.250 [82.55]
406628-1	2G	3.250 [82.55]
406629-1	3G	3.250 [82.55]
406630-1	4G	3.250 [82.55]
406631-1	5G	3.250 [82.55]

*Contact AMP Product Info Center for 20 AMP Part Numbers

8 Wire Power Feed Cable

408066-1	50 Ft. 8-Wire
408066-2	35 Ft. 8-Wire