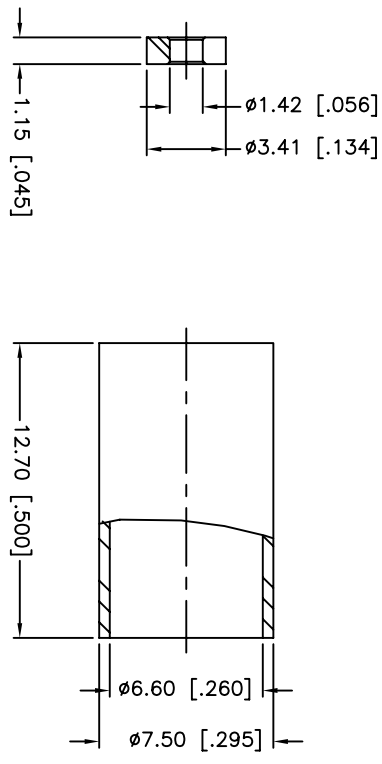
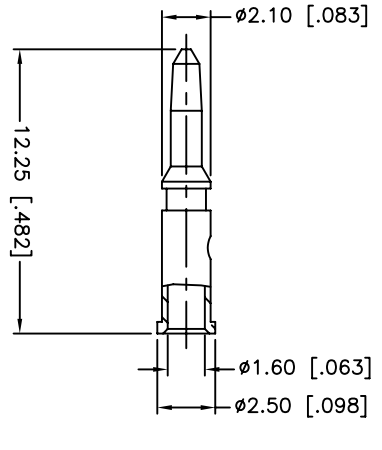
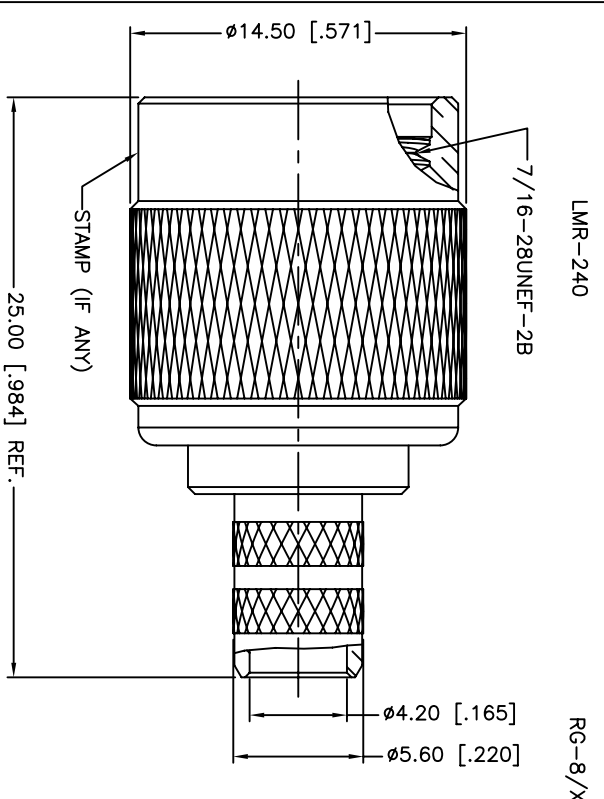


REV.	DATE	ECR NO.	DESCRIPTION
NC	07/01/03	XXXXXX	INITIAL RELEASE
A	07/05/03	XXXXXX	UPDATE DRAWING FORMAT
B	07/15/03	XXXXXX	CHANGE INSULATOR TO DELRIN
C	04/01/08	XXXXXX	CHANGE INSULATOR TO PTFE; REVISE CABLE DESCRIPTION
D	05/21/08	XXXXXX	CHANGE INSULATOR TO DELRIN
E	12/02/13	2663	ADD SPACER, ADD TABLE A AND MODIFY STRIPPING DIMENSIONS ADD ELECTRICAL/MECHANICAL NOTES, UPDATE DRAWING FORMAT



1. IMPEDANCE: 50 OHM
2. FREQUENCY RANGE: 0-11 GHz
3. DIELECTRIC WITHSTANDING VOLTAGE: 1500 VRMS, MIN.
4. DURABILITY: 500 CYCLES, MIN.
5. TEMPERATURE RANGE: -40°C TO +85°C
6. CRIMPED FERRULE
7. HEX CRIMP SIZE .255"
8. CRIMPED CONTACT PIN
9. HEX CRIMP SIZE .068"
10. SEE TABLE A FOR RECOMMENDED CABLE STRIPPING DIMENSIONS



CABLE TYPE	DIMENSION A	DIMENSION B	DIMENSION C	SPACER REQUIRED
LMR-240	5.15 [0.203]	7.70 [0.303]	16.00 [0.630]	YES
RG-8/X	4.00 [0.157]	7.70 [0.303]	16.00 [0.630]	NO

NO.	DESCRIPTION	MATERIAL	FINISH	QTY
10	FERRULE	BRASS	NICKEL	1
9	SPACER	PTFE	NATURAL	1
8	CONTACT PIN	BRASS	GOLD	1
7	WASHER	BRASS	NICKEL	1
6	RING	DELRIN	NATURAL	1
5	RETAINER RING	BRASS	NICKEL	1
4	GASKET	RUBBER	RED	1
3	INSULATOR	DELRIN	NATURAL	1
2	BODY	BRASS	NICKEL	1
1	SHELL	BRASS	NICKEL	1
	DESCRIPTION	MATERIAL	FINISH	QTY

UNLESS OTHERWISE SPECIFIED DIMENSIONS ARE IN MILLIMETERS DIMENSIONS IN [] ARE IN INCHES AND FOR CUSTOMER REFERENCE ONLY. TOLERANCES FOR MILLIMETERS ARE:
 <math><0.5 \pm 0.05\text{mm}</math>
 $0.5 - 6\text{mm} \pm 0.10\text{mm}$
 $6 - 30\text{mm} \pm 0.20\text{mm}$
 $30 - 120\text{mm} \pm 0.30\text{mm}$
 ANGLES $\pm 1^\circ$
 UNLESS OTHERWISE SPECIFIED TOLERANCES FOR INCHES ARE:
 <math><0.020 \pm 0.002''</math>
 $.020 - .236 \pm 0.004''$
 $.236 - 1.180 \pm 0.007''$
 $1.180 - 4.724 \pm 0.012''$
 ANGLES $\pm 1^\circ$
 DO NOT SCALE DRAWING

APPROVALS	DATE
M.ZHANG	12/02/13
CHECKED	
ISSUED	
SHEET	1 OF 1

Amphenol Connex

TNC CRIMP PLUG
(FOR RG-8/X, LMR-240 CABLE)

PART NO. 122408

CAD FILE C:/CONNEX/122408.DWG

DWG. NO. 122408.DWG

REV. E SIZE A SCALE NA