


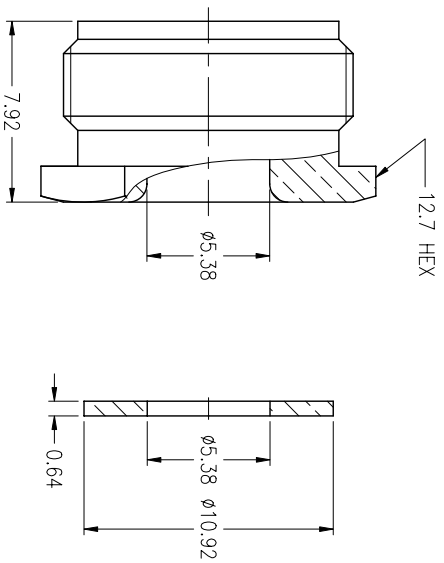
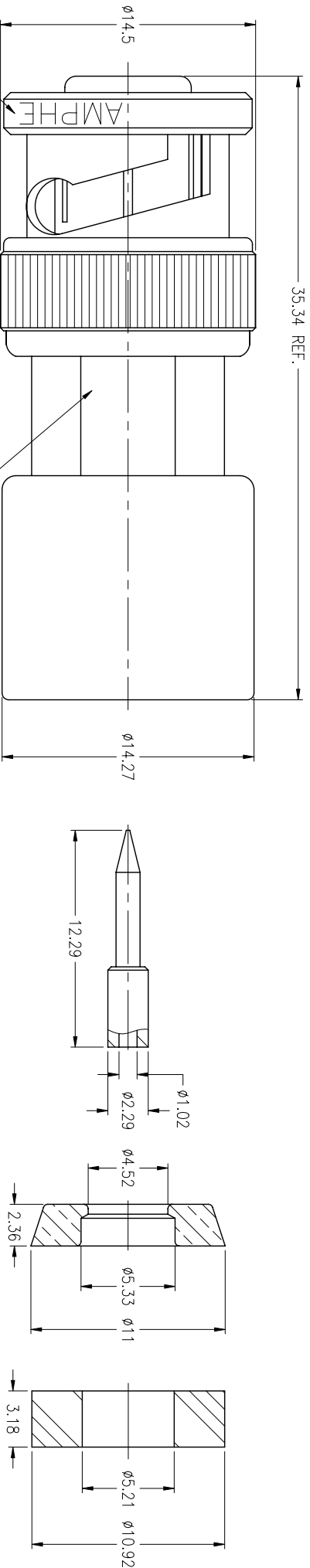
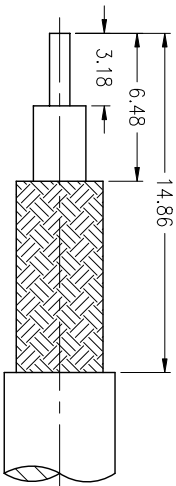
NOTES:

1. MATERIALS AND FINISHES:
 BODY - BRASS, NICKEL PLATING
 CONTACT - BRASS, SILVER PLATING
 INSULATOR - TEFLON, NATURAL
2. ELECTRICAL:
 A. IMPEDANCE: 50 OHM
 B. FREQUENCY RANGE: DC-0-4 GHz
 C. DIELECTRIC WITHSTANDING VOLTAGE: 1500 VRMS, MIN.
3. MECHANICAL:
 A. DURABILITY: 500 CYCLES MIN.
 B. TEMPERATURE RANGE: - 65°C to + 165°C

THIRD ANGLE PROJ. 

REVISIONS

REV	DESCRIPTION	DATE	ECO	APPR
B	SEE SHEET 1	13-Mar-08	--	AW
L	SEE SHEET 1	21-Dec-09	47888	SH
M	INSULATOR WAS CHANGED, ADDED 7.36 DIMENSION FOR STRIKING/RD-DM1102210111	24-Feb-11	48470	SH



CUSTOMER OUTLINE DRAWING
 ALL OTHER SHEETS ARE FOR INTERNAL USE ONLY

UNLESS OTHERWISE SPECIFIED, DIMENSIONS ARE IN METRIC AND TOLERANCES ARE:
 <0.5mm ±0.05mm 0.5 - 6mm ±0.1mm 6 - 30mm ±0.2mm 30 - 120mm ±0.3mm ANGLES ±1°

NOTICE - These drawings, specifications, or other data (1) are, and remain the property of Amphenol Corp. (2) must be returned upon request; and (3) are confidential and not to be disclosed to any person other than those to whom they are given by Amphenol Corp. The furnishing of these drawings, specifications, or other data is intended to provide information for design purposes only. Amphenol Corp. is not to be regarded by implication, or otherwise, as making any warranty, representation, or agreement, or as assuming any liability, for any infringement of any patent rights or permitting such holder or any other person to manufacture, use or sell any product, process or design, patented or otherwise, that may in any way be related to or disclosed by said drawings, specifications, or other data.

MATERIAL	DATE	TITLE	ITEM NO.
FINISH	24-Feb-11	MINIATURE H.V. PLUG FOR RG-58/U	29100
REFERENCE	24-Feb-11	SCALE: 3/1	29100
DRAWN T.DENG	24-Feb-11	DWG SIZE B	29100
ENGINEER S.L.I	24-Feb-11	SHEET 2 OF 2	29100
APPROVED S.H.SIEH	24-Feb-11	CODE ID 74868	29100
CAD FILE F:\DWG\GNPD\29100-MSZ		REV M	29100
			29100

Amphenol RF
 Danbury CT USA, Taiwan Taiwan, Shenzhen China
 www.amphenolrf.com