

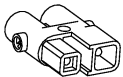


fitted with

work equipment
connected load
power consumption
luminous flux
luminous efficacy
light distribution
light colour
color rendering index (CRI)
system of protection
class of protection
usage
luminaire body
weight (net)
mains supply

fastening
dimension
light output
outside diameter
side part
special features

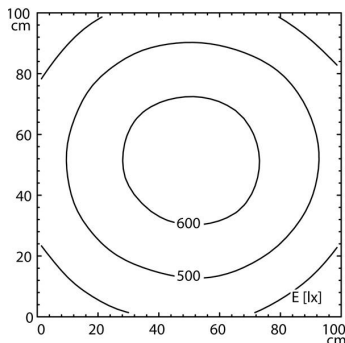
LED
Energy efficiency category A+
without
22-26 V; DC
approx. 25 W
approx. 1900 lm
approx. 76 lm/W
direct
neutral white, approx. 5000 K
> 80
IP 67
III
external
borosilicate glass,
approx. 2.5 kg, 5.51 lb
built-in plug
ST16/2 BS
pipe clamp (accessory)
A=650 mm, 25.6 in
D=596 mm, 23.4 in
70 mm, 2.75 in
A with screwed cable gland
light forming



ST16/2 BS

illuminance

distance: 100 cm
Em: 505 lx
Emax: 646 lx
Emin: 341 lx



luminous intensity

