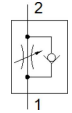
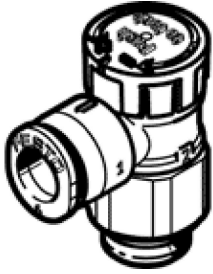


one-way flow control valve VFOE-LE-T-G18-Q8

Part number: 8068727

★ Core product range

FESTO



Data sheet

Feature	Value
Valve function	One-way flow control function for exhaust air
Pneumatic connection, port 1	QS-8
Pneumatic connection, port 2	G1/8
Type of actuation	manual
Adjusting element	Rotary knob with lock
Mounting type	Threaded
Standard nominal flow rate in flow control direction	170 l/min
Standard nominal flow rate in non-return direction	130 ... 200 l/min
Ambient temperature	-10 ... 60 °C
Material housing	PBT
Assembly position	Any
Width across flats	13 mm
Ability to swivel	360° / no continuous swivelling permissible
Operating pressure for entire temperature range	0.02 ... 1 MPa
Operating pressure complete temperature range	0.2 ... 10 bar
Operating pressure for entire temperature range	2.9 ... 145 psi
Standard flow rate in flow control direction 0.6->0 MPa (6->0 bar, 87->0 psi)	320 l/min
Standard flow rate in non-return direction at 0.6->0 MPa (6->0 bar, 87->0 psi)	320 ... 390 l/min
Operating medium	Compressed air in accordance with ISO8573-1:2010 [7:4:4]
Note on operating and pilot medium	Lubricated operation possible (subsequently required for further operation)
PWIS conformity	VDMA24364 zone III
Medium temperature	-10 ... 60 °C
Max. tightening torque	6 Nm
Nominal tightening torque	5 Nm
Tolerance for nominal tightening torque	± 20 %
Product weight	9.5 g
Materials note	Conforms to RoHS
Material cover	PBT
Material of dynamic seals	HNBR
Material threaded bolt	Galvanised steel
Material release ring	PBT
Material static seals	NBR