



# N2795A/96A Single-ended Active Probes

## Data Sheet

### Key Features

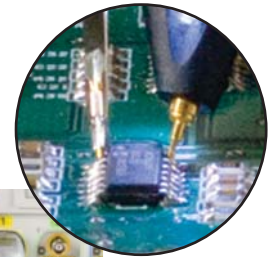
- High resistance (1M $\Omega$ ) and low capacitance (1 pF) input for low loading
- Wide input dynamic range ( $\pm 8$ V) and offset range ( $\pm 12$ V for N2796A,  $\pm 8$ V for N2795A)
- Built-in headlight for better visibility while probing
- Includes various probe tip accessories
- Direct connection to AutoProbe interface (no power supply required)
- Provides full system bandwidth with InfiniiVision and Infiniium oscilloscopes with bandwidths up to 1 GHz

The N2795A/96A are a new generation of low-cost, 1 and 2 GHz single-ended active probes with the AutoProbe interface (compatible with Agilent's InfiniiVision and Infiniium family of oscilloscopes). These probes integrate many of the characteristics needed for today's general-purpose, high-speed probing - especially in digital system design, component design/characterization, and educational research applications. Its 1M $\Omega$  input resistance and extremely low input capacitance (1 pF) provide ultra low loading of the DUT. This, accompanied with superior signal fidelity, makes these probes useful for most of today's digital logic voltages. And with their wide dynamic range ( $\pm 8$  V) and offset range ( $\pm 12$  V for N2796A,  $\pm 8$  V for N2795A), these probes can be used in a wide variety of applications.

For high signal integrity probing, the N2795A 1 GHz and N2796A 2 GHz active probes are perfect complements to Agilent's 500MHz – 600MHz and 1 GHz bandwidth scopes, respectively. The N2796A 2 GHz probe can also be used with Agilent's 2.5 GHz or higher bandwidth Infiniium scope as a low cost alternative to InfiniiMax probes.

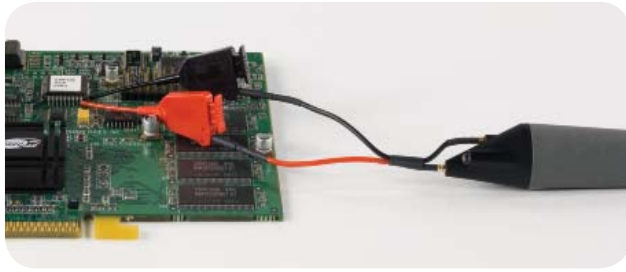


N2795A/96A active probe with standard accessories

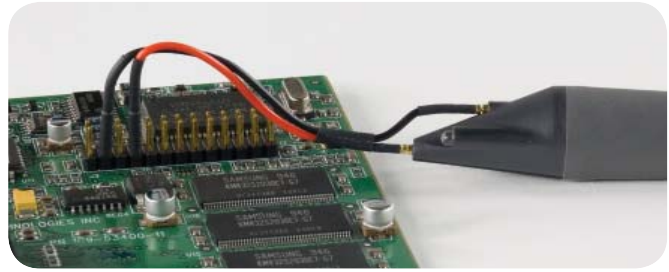


A White LED headlight can be turned on to illuminate the circuit under test for better visibility while probing

The N2795A/96A are equipped with a pleasant white LED headlight to illuminate the circuit under test. The probes are powered directly by the InfiniiVision and Infiniium Autoprobe interface, eliminating the need for an additional power supply. The probes also come with a number of accessories that allow for easy connections to the circuit under test.



Use flex nose clip adapters with the dual lead adapter to obtain access to IC leads or head connectors.



The dual lead adapter allows you to easily connect the probe to a popular 0.1" pin header with 0.025" square pins.

## Characteristics

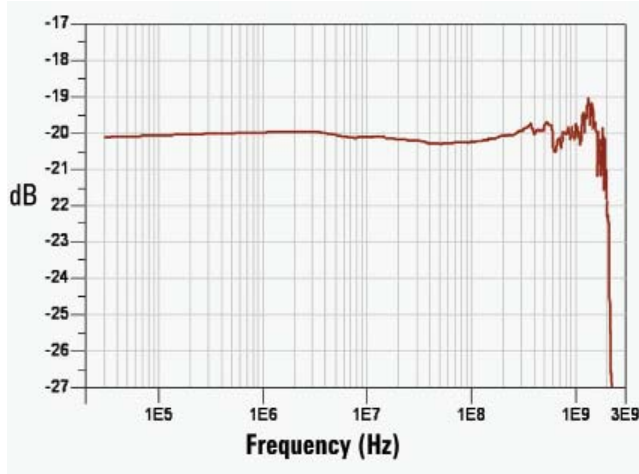
	N2795A	N2796A
Probe Bandwidth* (-3db)	1 GHz	2 GHz
Risetime (calculated, 10-90%)	350 psec	175 psec
System Bandwidth (with Agilent oscilloscope)	500/600 MHz (with Agilent's 500/600 MHz InfiniiVision/ Infiniium oscilloscope)	1 GHz (with Agilent's 1 GHz InfiniiVision/ Infiniium oscilloscope)
Attenuation Ratio (@DC)	10:1 ± 0.5%	
Input Dynamic Range	-8 V to +8 V (DC or peak AC)	
Non-destructive Max Input Voltage	-20 V to +20 V	
Offset range	±8 V	±12 V
DC Offset Error (Output Zero)	< ±1 mV	
Flatness	Typical 0.4 dB (100 kHz - 100 MHz) Typical 0.6 dB (100 MHz - 500 MHz) Typical 0.8 dB (500 MHz - 1 GHz) Typical 1.3 dB (1 GHz - 2 GHz)	
Input Resistance*	1 MΩ	
Input Capacitance	1 pF	
Probe Noise	<1mVrms (referred to input)	
Output Impedance	50 Ω	
Internal Power	Agilent Autoprobe Interface from scope (InfiniiVision and Infiniium)	
Cable length	1.3 m	
Probe Weight	Approx. 100 g	
Ambient Operating Temperature	0 to 50 deg C	
Ambient Non-operating Temperature	-40 to 70 deg C	
Operating Humidity	95% RH @ 40 deg C	

\* denotes warranted electrical specifications after 20 minute warm-up, all others are typical

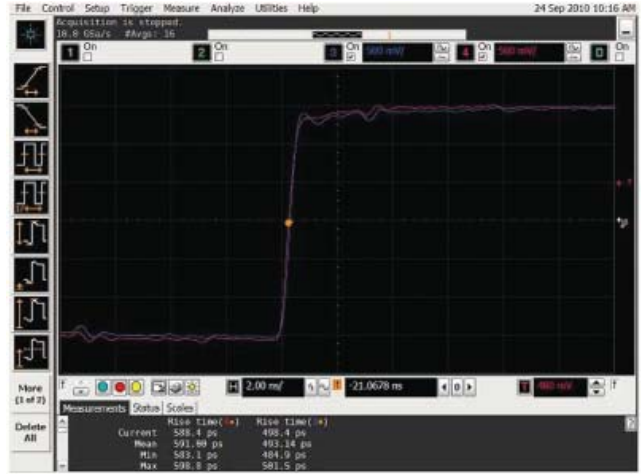
	N2795A	N2796A
Non-operating Humidity	90% RH @ 65 deg C	
Operating Altitude	4000 m	
ESD	8 kV HBM	
Standard Accessories	<ul style="list-style-type: none"> <li>- 2 each spring probe tip</li> <li>- 2 rigid probe tip</li> <li>- 1 each flex nose clip adapter (red and black)</li> <li>- 1 each copper pad, 10x</li> <li>- 1 each Y-lead adapter, 10 cm</li> <li>- 1 each right angle ground, 5 cm</li> <li>- 1 each right angle ground, 10 cm</li> <li>- 2 each ground blade</li> <li>- 1 each offset ground</li> <li>- 1 each flex ground</li> <li>- 4 color coding rings (each yellow, green, blue and purple)</li> </ul>	
Others (included)	-1 each accessory card	
Standard Warranty	1 year (extended warranty available at cost)	
Compatible Agilent scopes	Agilent InfiniiVision 5000, 6000, 7000 (except 6000 100MHz) and Infiniium 9000, 90000, 90000 X-Series (with N5442A)	

Model number	Description
N2795A	1 GHz single-ended active probe
N2796A	2 GHz single-ended active probe

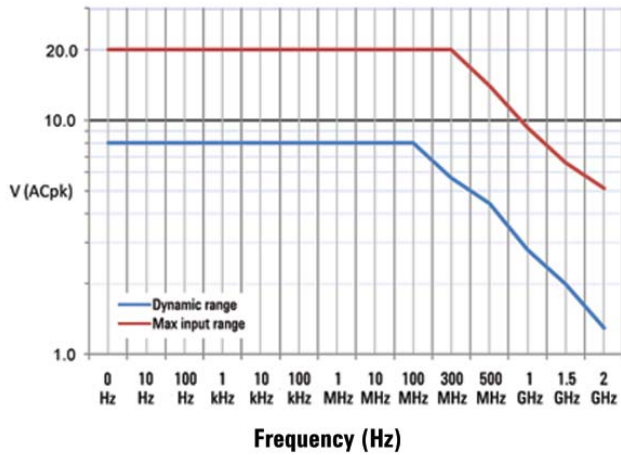
## Measurement plots



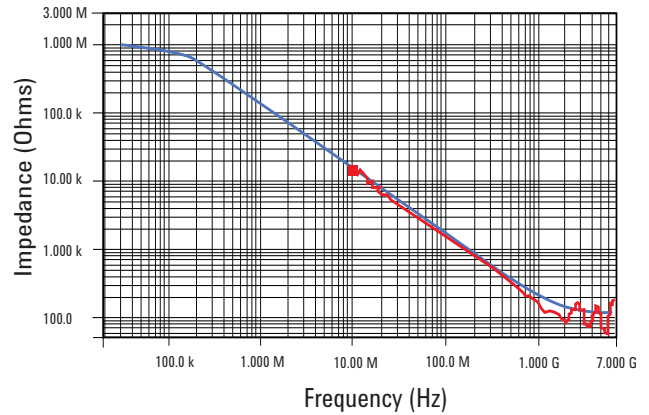
Frequency response of N2796A ( $V_{out}/V_{in}$ )



Time domain step response of N2796A (with Agilent MSO9404A)



Voltage derating over frequency (N2796A)



Input impedance over frequency (Red = measured, Blue = model)



### Agilent Email Updates

[www.agilent.com/find/emailupdates](http://www.agilent.com/find/emailupdates)

Get the latest information on the products and applications you select.



[www.lxistandard.org](http://www.lxistandard.org)

LXI is the LAN-based successor to GPIB, providing faster, more efficient connectivity. Agilent is a founding member of the LXI consortium.

### Agilent Channel Partners

[www.agilent.com/find/channelpartners](http://www.agilent.com/find/channelpartners)

Get the best of both worlds: Agilent's measurement expertise and product breadth, combined with channel partner convenience.



Agilent Advantage Services is committed to your success throughout your equipment's lifetime. We share measurement and service expertise to help you create the products that change our world. To keep you competitive, we continually invest in tools and processes that speed up calibration and repair, reduce your cost of ownership, and move us ahead of your development curve.

[www.agilent.com/find/advantageservices](http://www.agilent.com/find/advantageservices)



[www.agilent.com/quality](http://www.agilent.com/quality)

[www.agilent.com](http://www.agilent.com)  
[www.agilent.com/find/N2795A](http://www.agilent.com/find/N2795A)

For more information on Agilent Technologies' products, applications or services, please contact your local Agilent office. The complete list is available at:

[www.agilent.com/find/contactus](http://www.agilent.com/find/contactus)

#### Americas

Canada	(877) 894 4414
Brazil	(11) 4197 3500
Latin America	305 269 7500
Mexico	01800 5064 800
United States	(800) 829 4444

#### Asia Pacific

Australia	1 800 629 485
China	800 810 0189
Hong Kong	800 938 693
India	1 800 112 929
Japan	0120 (421) 345
Korea	080 769 0800
Malaysia	1 800 888 848
Singapore	1 800 375 8100
Taiwan	0800 047 866
Thailand	1 800 226 008

#### Europe & Middle East

Austria	43 (0) 1 360 277 1571
Belgium	32 (0) 2 404 93 40
Denmark	45 70 13 15 15
Finland	358 (0) 10 855 2100
France	0825 010 700*
	*0.125 €/minute
Germany	49 (0) 7031 464 6333
Ireland	1890 924 204
Israel	972-3-9288-504/544
Italy	39 02 92 60 8484
Netherlands	31 (0) 20 547 2111
Spain	34 (91) 631 3300
Sweden	0200-88 22 55
Switzerland	0800 80 53 53
United Kingdom	44 (0) 118 9276201

Other European Countries:

[www.agilent.com/find/contactus](http://www.agilent.com/find/contactus)

Revised: July 8, 2010

Product specifications and descriptions in this document subject to change without notice.

© Agilent Technologies, Inc. 2010  
Printed in USA, October 1, 2010  
5990-6480EN



**Agilent Technologies**