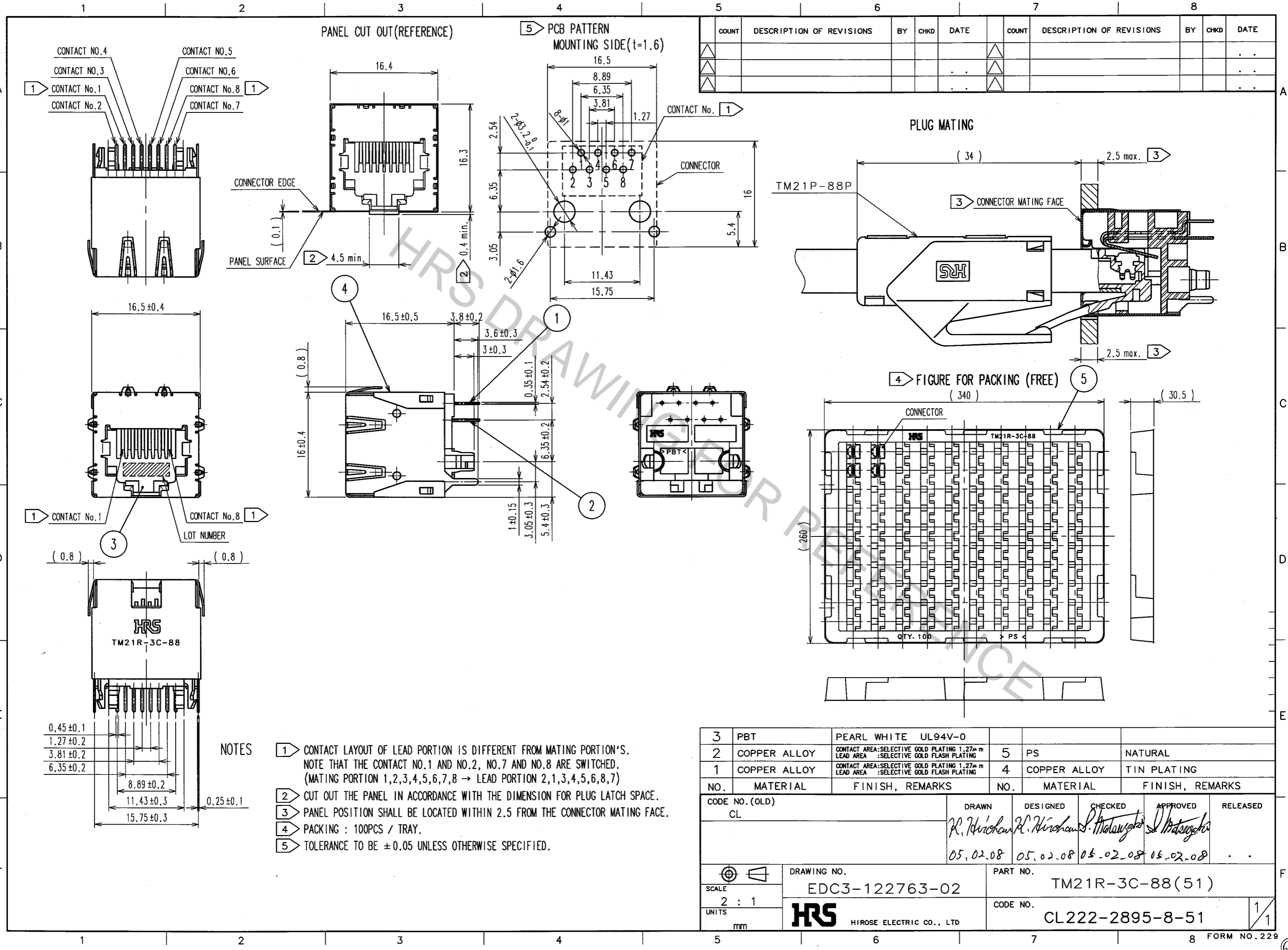


Oct.1.2018 Copyright 2018 HIROSE ELECTRIC CO., LTD. All Rights Reserved.
 In case that the application demands a high level of reliability, such as automotive,
 please contact a company representative for further information.



COUNT	DESCRIPTION OF REVISIONS	BY	CHKD	DATE	COUNT	DESCRIPTION OF REVISIONS	BY	CHKD	DATE

- NOTES**
- 1 CONTACT LAYOUT OF LEAD PORTION IS DIFFERENT FROM MATING PORTION'S.
 NOTE THAT THE CONTACT NO.1 AND NO.2, NO.7 AND NO.8 ARE SWITCHED.
 (MATING PORTION 1,2,3,4,5,6,7,8 → LEAD PORTION 2,1,3,4,5,6,8,7)
 - 2 CUT OUT THE PANEL IN ACCORDANCE WITH THE DIMENSION FOR PLUG LATCH SPACE.
 - 3 PANEL POSITION SHALL BE LOCATED WITHIN 2.5 FROM THE CONNECTOR MATING FACE.
 - 4 PACKING : 100PCS / TRAY.
 - 5 TOLERANCE TO BE ±0.05 UNLESS OTHERWISE SPECIFIED.

NO.	MATERIAL	FINISH, REMARKS	NO.	MATERIAL	FINISH, REMARKS
3	PBT	PEARL WHITE UL94V-0	5	PS	NATURAL
2	COPPER ALLOY	CONTACT AREA:SELECTIVE GOLD PLATING 1.27μm LEAD AREA :SELECTIVE GOLD FLASH PLATING	4	COPPER ALLOY	TIN PLATING
1	COPPER ALLOY	CONTACT AREA:SELECTIVE GOLD PLATING 1.27μm LEAD AREA :SELECTIVE GOLD FLASH PLATING			

CODE NO. (OLD) CL	DRAWN R. Hirouchi 05.02.08	DESIGNED R. Hirouchi 05.02.08	CHECKED S. Matsuyoshi 05.02.08	APPROVED S. Matsuyoshi 05.02.08	RELEASED
----------------------	----------------------------------	-------------------------------------	--------------------------------------	---------------------------------------	----------

SCALE 2 : 1	DRAWING NO. EDC3-122763-02	PART NO. TM21R-3C-88(51)
UNITS mm	HRS HIROSE ELECTRIC CO., LTD	CODE NO. CL222-2895-8-51

TO
Q