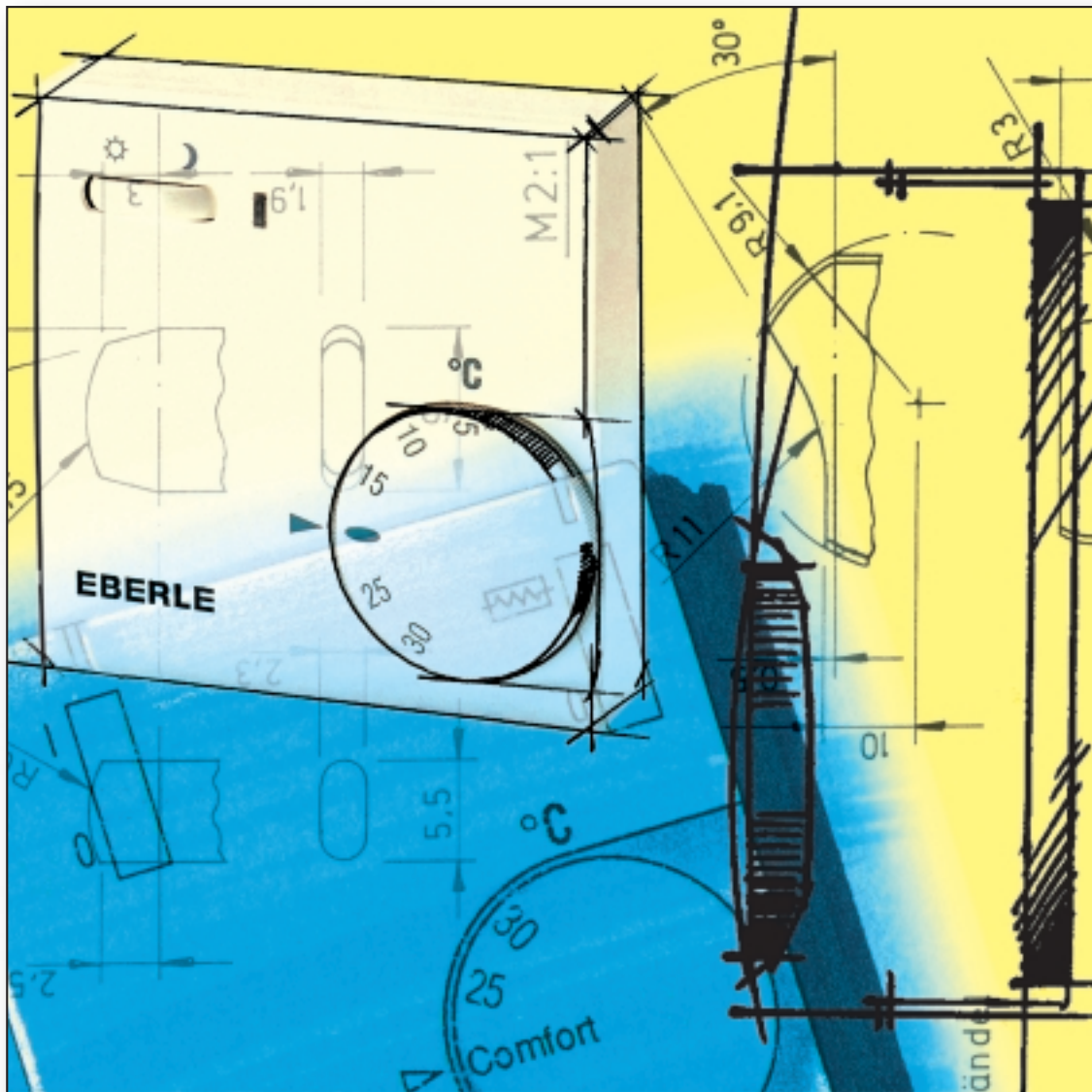


EBERLE

Controller family RTR-E 6000



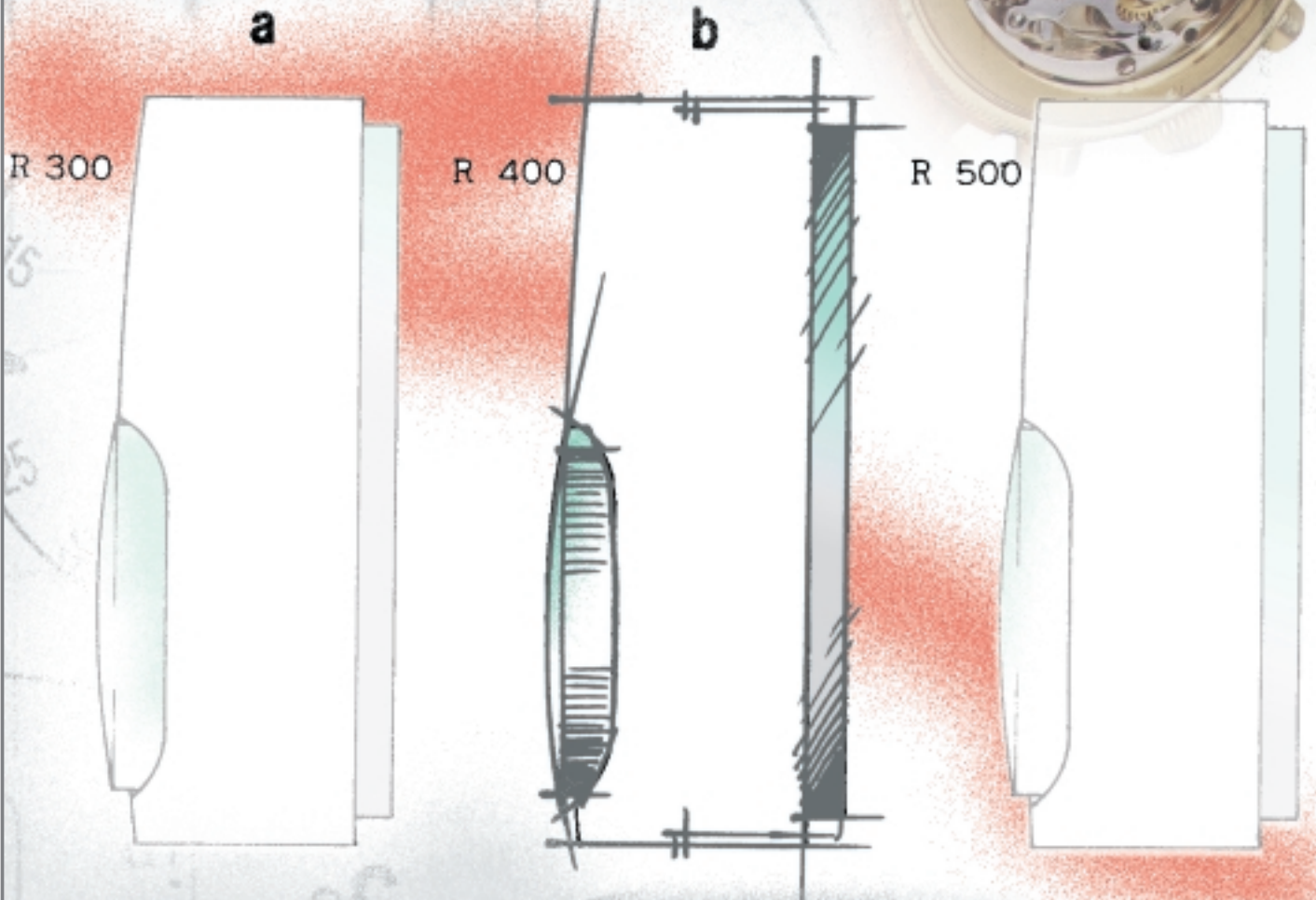
“ ... so you can be proud of your work”

 **invensys**

With engineering at an optimum, design will be your next argument

There are a few time-proven technologies which have grown to perfection thanks to high precision and rugged reliability. Especially for measuring and control applications.

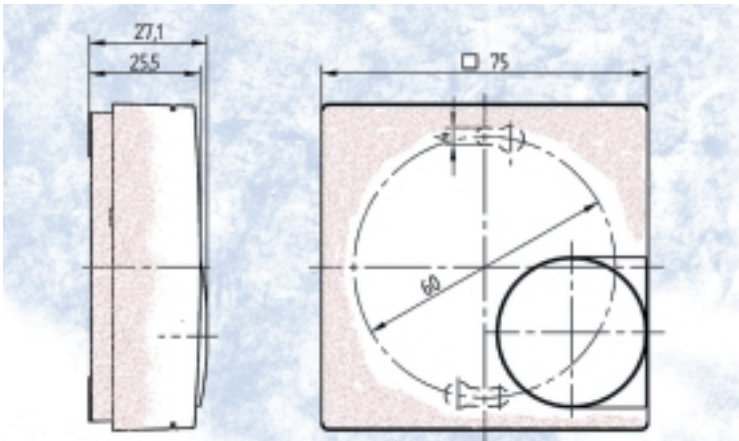
Bimetal technology is one of these.



Where, as in the case of the RTR-E 6000 controller family from **EBERLE**, the engineering is perfect, design will be your next sales argument. But good design involves hard work, for form and function must blend into an optimum unit. The design study illus-

trated shows you the amount of effort **EBERLE** invested just to develop the right "rounding" of the operator surface. And exactly the same amount of care is spent on every single design detail. Thus quality becomes visible. For your benefit.

Make a good name for yourself – also with your exacting customers



Bimetal technology continues to be the most sophisticated and field-proved technology in the field of temperature measurement and control. Millions of applications, even for the most difficult conditions, are convincing proof. As a European market leader, **EBERLE**

has optimized this technology step by step. The result is the new controller family RTR-E 6000.

A family featuring precise functions, attractive design, unproblematic installation.

We are living in a design-oriented world. Technical reliability is looked upon by the customer as elementary. More and more he is expecting a modern product design which ergonomically and aesthetically meets the highest standards. Your customer wants to be assured by the look of it that he has made the right decision.

Only he who is aware of and responds to this trend will maintain his hold on the market in the future. We can support your efforts. With our newly developed controller family RTR-E 6000.

With the products of this family which will blend harmoniously in any environment you will create the very best impression with your new customers. And the possibility of substituting the new

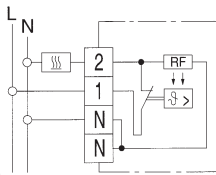
products readily for existing designs will maintain your popularity with your existing customers. This is how "you make your market". For the future of your company.



EBERLE design 2000

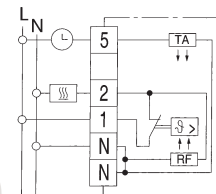
We also control the progress in design

RTR-E 6121



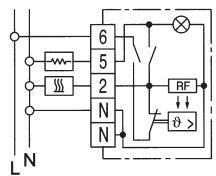
Temperature range	5 to 30 °C
Operating voltage	AC 230 V 50/60 Hz
Contact	SPST (break on rise)
Switching current	10 (4) A
Switching differential	approx. 0,5 K
Housing protection	IP 30 / isolated
Order number	RTR-E 6121

RTR-E 6124



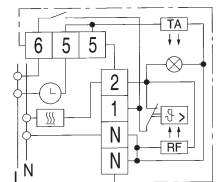
Temperature range	5 to 30 °C
Operating voltage	AC 230 V 50/60 Hz
Contact	SPST (break on rise)
Switching current	10 (4) A
Temperature set-back	approx. 5 K (via external clock)
Switching differential	approx. 0,5 K
Housing protection	IP 30 / isolated
Order number	RTR-E 6124

RTR-E 6181



Temperature range	5 to 30 °C
Operating voltage	AC 230 V, 50/60 Hz
Contact	SPST (break on rise)
Switching current	10 (4) A
Switch	Mains on/off
Switch and indicator lamp	Supplementary heating on/off
Switching differential	approx. 0,5 K
Housing protection	IP 30 / isolated
Order number	RTR-E 6181

RTR-E 6202

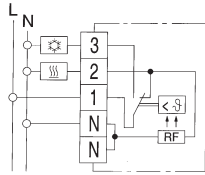


Temperature range	5 to 30 °C
Operating voltage	AC 230 V, 50/60 Hz
Contact	SPST (break on rise)
Switching current	10 (4) A
Switch	Mains on/off
Indicator lamp	Controller calling for heat
Temperature set-back	approx. 5 K (via external clock)
Switching differential	approx. 0,5 K
Housing protection	IP 30 / isolated
Order number	RTR-E 6202

EBERLE design 2000

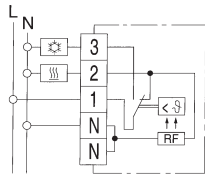
Comfort can be controlled

RTR-E 6704



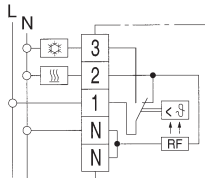
Temperature range	-20 to 30 °C
Operating voltage	AC 230 V 50/60 Hz
Contact	SPDT
Switching current	Heat: 10 (4) A Cool: 5 (2) A
Switching differential	approx. 0,5 K
Housing protection	IP 30 / isolated
Order number	RTR-E 6704

RTR-E 6705



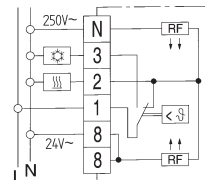
Temperature range	10 to 60 °C
Operating voltage	AC 230 V, 50/60 Hz
Contact	SPDT
Switching current	Heat: 10 (4) A Cool: 5 (2) A
Switching differential	approx. 0,5 K
Housing protection	IP 30 / isolated
Order number	RTR-E 6705

RTR-E 6721



Temperature range	5 to 30 °C
Operating voltage	AC 230 V 50/60 Hz
Contact	SPDT
Switching current	Heat: 10 (4) A Cool: 5 (2) A
Switching differential	approx. 0,5 K
Housing protection	IP 30 / isolated
Order number	RTR-E 6721

RTR-E 6722

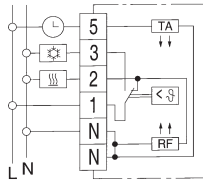


Temperature range	5 to 30 °C
Operating voltage	AC 230 V or AC 24 V 50/60 Hz
Contact	SPDT
Switching current	Heat: 10 (4) A Cool: 5 (2) A
Switching differential	approx. 0,5 K
Housing protection	IP 30 / isolated
Order number	RTR-E 6722

EBERLE design 2000

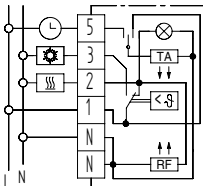
A pleasant environment, is a question of taste

RTR-E 6724



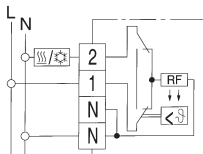
Temperature range	5 to 30 °C
Operating voltage	AC 230 V 50/60 Hz
Contact	SPDT
Switching current	Heat: 10 (4) A Cool: 5 (2) A
Temperature set-back	approx. 5 K (via external clock)
Switching differential	approx. 0,5 K
Housing protection	IP 30 / isolated
Order number	RTR-E 6724

RTR-E 6726



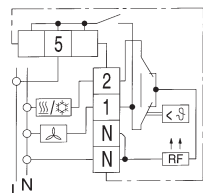
Temperature range	5 to 30 °C
Operating voltage	AC 230 V 50/60 Hz
Contact	SPDT
Switching current	Heat: 10 (4) A Cool: 5 (2) A
Switch	Day / night / automatic
Indicator lamp	Temperature set-back in operation
Temperature set-back	approx. 5 K (via external clock)
Switching differential	approx. 0,5 K
Housing protection	IP 30 / isolated
Order number	RTR-E 6726

RTR-E 6731



Temperature range	5 to 30 °C
Operating voltage	AC 230 V 50/60 Hz
Contact	SPDT
Switching current	Heat: 10 (4) A Cool: 5 (2) A
Switch	Heating / Cooling
Switching differential	approx. 0,5 K
Housing protection	IP 30 / isolated
Order number	RTR-E 6731

RTR-E 6732

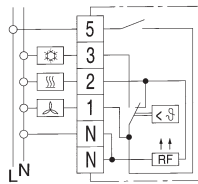


Temperature range	5 to 30 °C
Operating voltage	AC 230 V 50/60 Hz
Contact	SPDT
Switching current	Heat: 10 (4) A Cool: 5 (2) A
Switch	Mains on / off
Switch	Heating / Cooling
Switching differential	approx. 0,5 K
Housing protection	IP 30 / isolated
Order number	RTR-E 6732

EBERLE design 2000

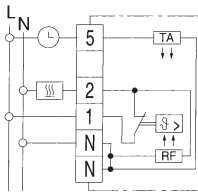
The design for a pleasant temperature environment

RTR-E 6763



Temperature range	5 to 30 °C
Operating voltage	AC 230 V 50/60 Hz
Contact	SPDT
Switching current	Heat: 10 (4) A Cool: 5 (2) A
Switch	Mains on/off
Switching differential	approx. 0,5 K
Housing protection	IP 30 / isolated
Order number	RTR-E 6763

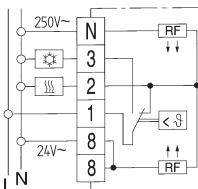
RTR-E 6145



Tamperproof cover

Temperature range	5 to 30 °C
Operating voltage	AC 230 V 50/60 Hz
Contact	SPST (break on rise)
Switching current	10 (4) A
Temperature set-back	approx. 5 K (via external clock)
Switching differential	approx. 0,5 K
Housing protection	IP 30 / isolated
Order number	RTR-E 6145

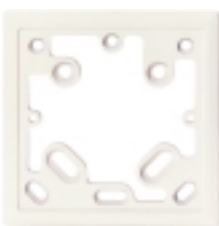
RTR-E 6747



Tamperproof cover

Temperature range	5 to 30 °C
Operating voltage	AC 230 V or AC 24 V 50/60 Hz
Contact	SPDT
Switching current	Heat: 10 (4) A Cool: 5 (2) A
Switching differential	approx. 0,5 K
Housing protection	IP 30 / isolated
Order number	RTR-E 6747

ARA 1-E



Mounting plate

To enable the mounting of controllers onto almost internationally applied conduit boxes.

This frame is particularly suited to cover up not very well finished conduit boxes, or to apply when conduit boxes are larger than the base plate of the controller.

EBERLE design 2000

We control engineering with know-how

Summary

Features	Type	RTR-E 6121														
		RTR-E 6121	RTR-E 6124	RTR-E 6145	RTR-E 6181	RTR-E 6202	RTR-E 6721	RTR-E 6722	RTR-E 6724	RTR-E 6726	RTR-E 6731	RTR-E 6732	RTR-E 6747	RTR-E 6763	RTR-E 6705	RTR-E 6704
Temperature range	5 to 30 °C	•	•	•	•	•	•	•	•	•	•	•	•	•	•	•
Temperature range	10 to 60 °C															•
Temperature range	-20 to 30 °C															•
Contact	SPDT						•	•	•	•	•	•	•	•	•	•
	SPST (break on rise)	•	•	•	•	•										
Temperature set-back			•	•	•			•	•							
Switch	Mains on/off				•	•					•		•			
	Day/night/automatic								•							
	Supplementary heating on/off				•											
	Heating/Cooling									•	•					
Indicator lamp:																
	Controller calling for heating					•				•						
	Supplementary heating				•											
Operating voltage	230 V	•	•	•	•	•	•	•	•	•	•	•	•	•	•	•
	24 V							•					•			
Switching current																
	AC 1(1) to 10(4) A, DC 100 W	•	•	•	•	•										
	H=1 to 10(4) A / C=1 to 5(2) A, DC 30 W						•	•	•	•	•	•	•	•	•	•
Tamperproof cover				•									•			
Available ex stock		•	•	•	•	•	•	•	•	•	•	•	•	•	•	•
EDP-No.		111 1101 51 100	111 1102 51 100	111 1102 50 100	111 1103 51 100	111 1104 51 100	111 1701 51 100	111 1702 91 100	111 1707 51 100	111 1704 51 100	111 1705 51 100	111 1706 51 100	111 1702 90 100	111 1703 51 100	111 1709 51 100	111 1708 51 100



EBERLE Controls GmbH

Postfach 13 01 53 D-90113 Nürnberg

Klingenhofstraße 71 D-90411 Nürnberg

T +49(0)911 56 93 0 F +49(0)911 56 93 536

Email: infoeberle@invensysclimate.com