



Adafruit NeoPXL8 FeatherWing and Library

Created by Phillip Burgess



Last updated on 2021-09-17 07:10:19 PM EDT

Guide Contents

Guide Contents	2
Overview	3
NeoPXL8 FeatherWings	5
Connections: Two Types	5
Pin Selection	7
For M0 NeoPXL8 FeatherWing only...	7
For M4 NeoPXL8 FeatherWing only...	8
NeoPXL8 Breakout Board	10
NeoPXL8 Arduino Library	13
Example Code	13
Remaining functions and esoterica are documented on GitHub. (https://adafru.it/Blk)	16
RP2040 Use	17
Hardware	17
Software	19
Downloads	21
Arduino Libraries	21
Datasheets and Technical Information	21
Schematics & Fab Prints	21
Components for Fritzing App:	23

Overview

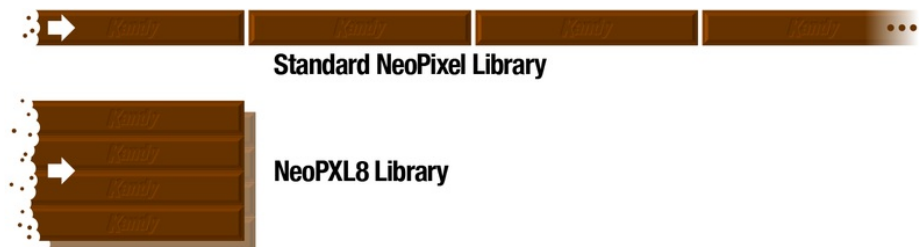
NeoPixels are magical things. It couldn't be simpler...a *single data wire* from the microcontroller, linking pixel to pixel for as long as you need. When NeoPixel projects get really large though...*hundreds* of pixels or more...this simplicity starts to become a **bottleneck**...

- The standard NeoPixel data rate is a fixed **800 KHz**, or 30 microseconds per 24-bit pixel. As projects scale into the hundreds or thousands of pixels, the time spent issuing all that data reaches progressively larger fractions of a second; animation becomes **less smooth**.
- While this data is being transmitted, *all other processing* on the microcontroller **stops**, including interrupts which keep track of time. This is why the millis() and micros() functions gradually drift in NeoPixel projects.



NeoPXL8 (pronounced “NeoPixelate”) is a hardware-and-software combo that works around these limitations to bring buttery **smooth animation** to **large-scale NeoPixel projects**.

NeoPXL8 splits the problem **8 ways**: rather than one long strand of, say, 1,000 pixels*, eight strands of 125 pixels can operate concurrently in perfect sync. It's like shoving two whole Kit Kats® in your mouth “the illegal way” instead of nibbling one bar at a time. Data transmission times are greatly reduced and animation can remain smooth.



* Hypothetical situation, not an imposed limit. Depends on available RAM, but most “M0” (SAMD21) boards

might handle upwards of 2,500 pixels, with “M4” (SAM51) and RP2040 potentially up to 15,000...but in reality, you’ll want some *fraction* of that, so your code has time to *compute* those pixels.

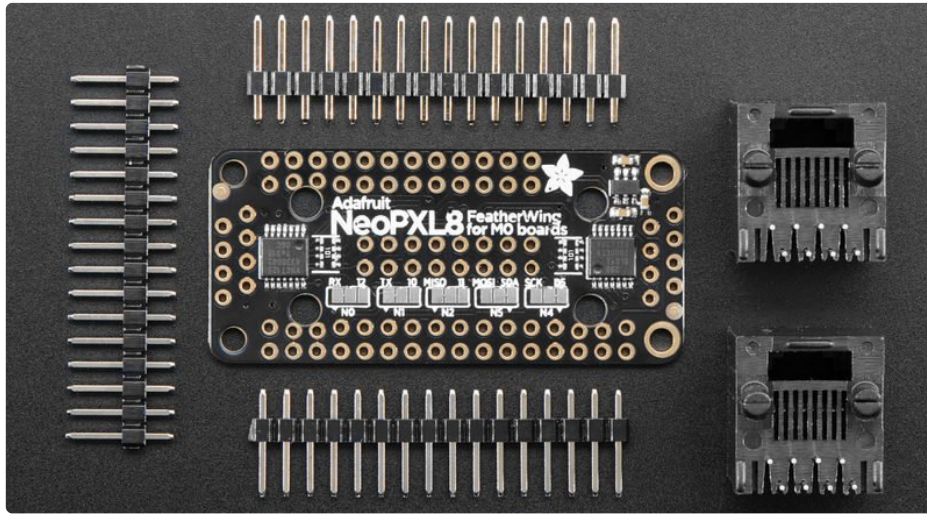
Additionally, NeoPXL8 uses **direct memory access (DMA)** to allow the CPU to **continue with other tasks** while these data transfers take place in the background. Your code could start processing the next frame of animation, or load data from an SD card. All interrupts and timekeeping functions operate normally, no drift.

The NeoPXL8 code relies on features unique to the SAMD21, SAM51 and RP2040 microcontrollers — it should work on any Adafruit “M0” or “M4” board, the Arduino Zero, and most RP2040 boards like the Raspberry Pi Pico. *It will not work on other architectures.*

The NeoPXL8 FeatherWing adapters provide **8 NeoPixel outputs** with **5-Volt logic level shifting**, and it stacks directly atop any of our **M0 or M4 Feather** boards — Basic Proto, Adalogger and so forth. (*Note there are different versions for Feather M0 vs M4, they are not interchangeable!*) With a minor change, the M4 version can work with the **Feather RP2040**.

The **NeoPXL8 Friend** breakout board provides similar functionality in a non-FeatherWing format, making it handy for use with boards like the Metro Express or ItsyBitsy M0 Express (and their respective M4 variants) or the Raspberry Pi Pico.

NeoPXL8 FeatherWings



For NeoPixel projects starting with one of our **Feather M0** or **M4** board variants, a **NeoPXL8 FeatherWing** can simplify and make sense of the wiring...the boards are designed to be stacked. **Some soldering** and “maker skills” are required.

There are two distinct versions of the NeoPXL8 FeatherWing: one for M0 boards, the other for M4. The two are *not* interchangeable.

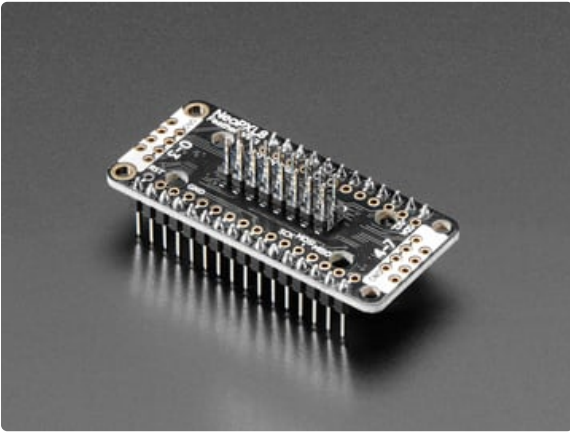
You can use any Feather M0 or M4...however, some NeoPXL8 outputs get configured to take over I2C or SPI pins. In particular, if an SPI pin is used for NeoPXL8, the Adalogger, WiFi, Bluefruit will not be able to use the built in SD/WiFi/BTLE chips! If I2C is used, most FeatherWings with I2C sensors/devices won't work!

The M0 and M4 versions of the NeoPXL8 FeatherWing are NOT interchangeable — get the correct type to match your Feather board!

The **M4** version of the FeatherWing can also be used with the **Adafruit Feather RP2040** with just a small modification. Finish reading this page for general connection tips, then visit the “RP2040 Use” page for the fix.

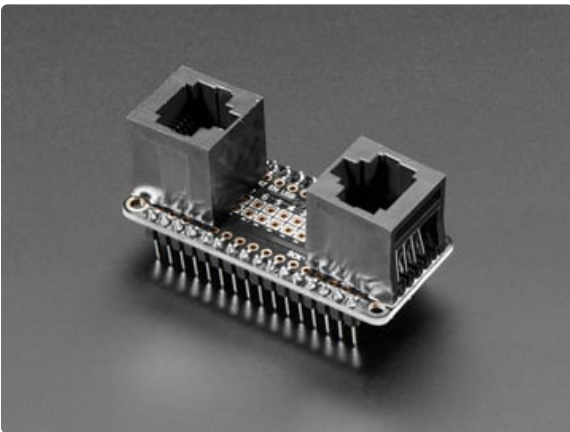
Connections: Two Types

The NeoPXL8 FeatherWing can be assembled **one of two ways** depending on your preferences and needs. You must **choose beforehand** what kind of connectors your project needs, as there's **not enough room for both at once...**



Populating the **8x2** row header at the center of the board (16 pins total) provides a “**Fadecandy-style**” connection.

Fadecandy (<https://adafru.it/BI7>) is a USB NeoPixel controller popular in large-scale LED installations. The 8x2 connector is fairly compact and low-profile. Assembled this way, the NeoPXL8 Feather-and-Wing combo could, with suitable Arduino code, function as a swap-in replacement in an existing Fadecandy project, or could make use of NeoPixels already wired for such.



Populating the **two RJ45** connectors at the board ends provides an “**OctoWS2011-style**” connection.

OctoWS2811 (<https://adafru.it/BI8>) is a similar hardware-and-software combo for large NeoPixel setups using the **PJRC Teensy 3.2** (<https://adafru.it/j7a>) microcontroller. These connections are bulkier but latch into place and ensure a specific polarity. Assembled this way, the NeoPXL8 Feather-and-Wing combo could, with suitable Arduino code, function as a swap-in replacement in an existing OctoWS2811 project, or could make use of NeoPixels already wired for such.

In either case, the NeoPixel headers mount on the **FLAT SIDE** of the NeoPXL8 FeatherWing — the side with **NO COMPONENTS** — and are soldered on the *component side*. The Feather-stacking pins are done the **OPPOSITE** way — install from the component side, solder on the flat side. See the photos above for reference.

Additionally, you still need to build a *wiring harness* between these connectors and your NeoPixel LEDs. The above is just a starting point.

Adopting these two wiring schemes mean that **any existing tutorials** for wiring up Fadecandy or OctoWS2811 projects are **applicable to NeoPXL8** as well — it’s not starting over with a third incompatible standard.

[This tutorial shows some Fadecandy-style wiring harnesses being made](https://adafru.it/BIa) (<https://adafru.it/BIa>), using a ribbon cable and 8x2 IDC header, plus lots of soldering and heat-shrink. A multimeter with continuity beep is helpful in keeping track of data wires and grounds!

[The OctoWS2811 product page on the PJRC web site](https://adafru.it/BIb) (<https://adafru.it/BIb>) shows RJ45 wiring harnesses being made by cutting open Ethernet cables.

You will also need to safely distribute **5 Volt power** to all of your **NeoPixels**. This is **not** done through the NeoPXL8 board — it needs to be **part of your wiring harness**. [This tutorial explains](https://adafru.it/BIc) (<https://adafru.it/BIc>)

some of the issues in powering large-scale NeoPixel installations.

Pin Selection

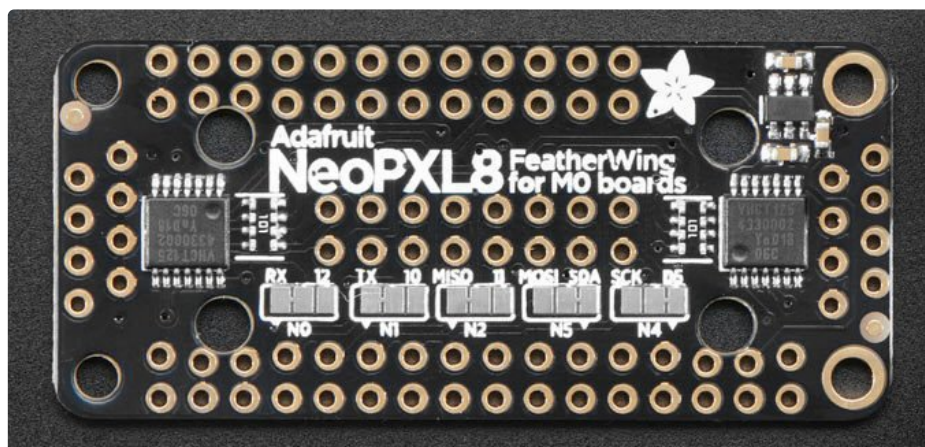
Because we're using hardware tricks, **NeoPXL8 output works only on specific pins**. Some are set in stone others give *some* control in that you can select an alternate pin. This may be helpful if using a Feather or Wing with its own peripheral pin constraints (wireless, perhaps)...sometimes you can re-route some signals and keep full functionality.

Depending on what additional hardware you're interfacing, it's possible that *neither* selection will work... one peripheral or another absolutely requires that pin. In such cases, you can use NeoPXL8 with fewer than 8 outputs. We'll elaborate further on the "Library" page.

Keep track of your selections. Write it down somewhere. You'll need this information when writing Arduino sketches using the NeoPXL8 library.

The pin selection is a little different between the M0 and M4 FeatherWings...

For M0 NeoPXL8 FeatherWing only...



Let's refer to NeoPXL8's eight outputs as "0" through "7," sequentially. Outputs 3, 6 and 7 are fixed to specific Feather pins (13, A4, A3) and *cannot* be changed, period. Outputs 0, 1, 2, 4 and 5 offer a "this" or "that" choice.

On the component side of the FeatherWing you'll see several **solder pad** groups, labeled "N0", "N1", "N2", "N5" and "N4". Pay careful attention to those numbers...they are neither sequential nor contiguous (partly because three pins are fixed, partly because it was more practical to route the board this way).

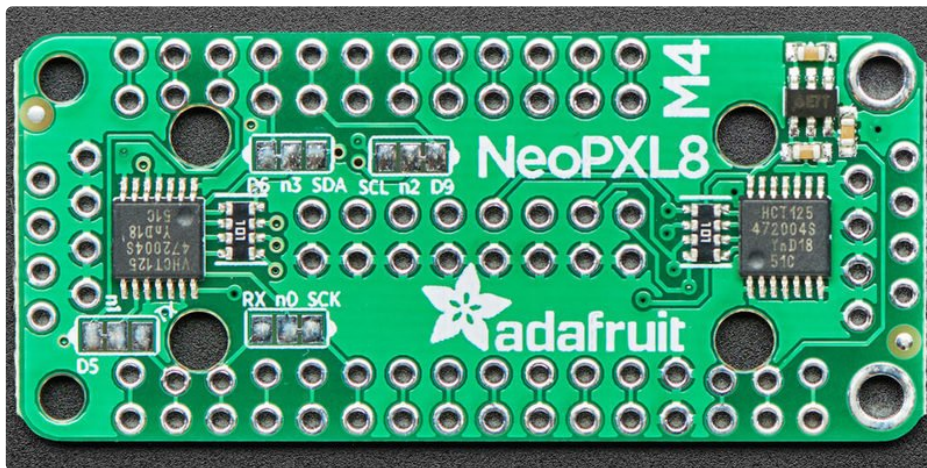
Each of these five pins has a default assignment. To change a pin to an alternate setting, use a hobby knife or file to cut the trace between the center and default pads, then apply a solder bridge between the

center and alternate pad.

Output Number	Default Pin	Alternate Pin
N0	RX	12
N1	TX	10
N2	MISO	11
N5	SDA	MOSI
N4	D5 (digital pin 5, <i>not</i> A5)	SCK

For M4 NeoPXL8 FeatherWing only...

These rules apply only to the **Feather M4** board. For Feather RP2040, see the “RP2040 Use” page.



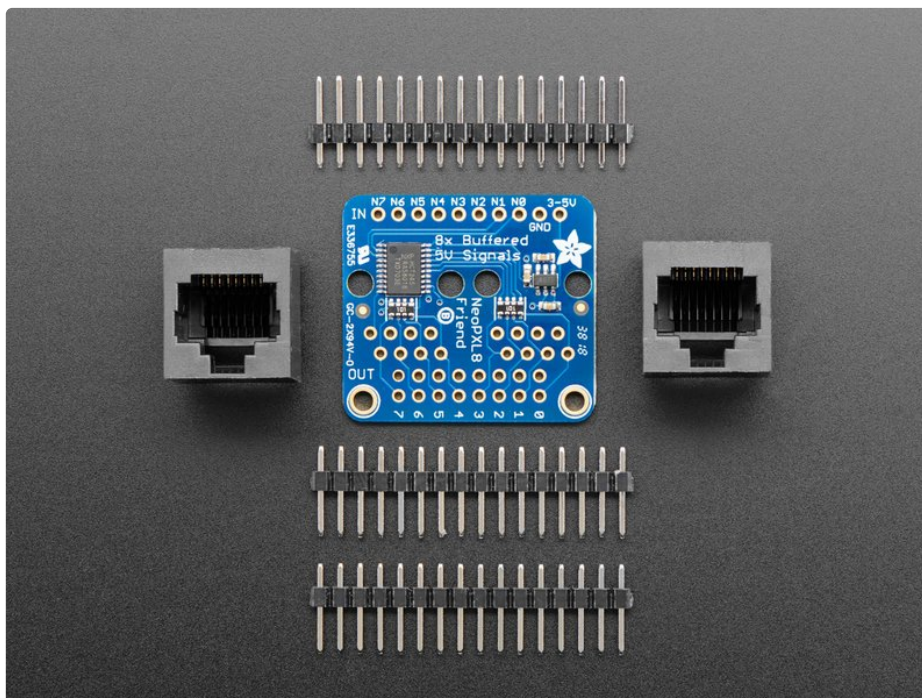
Let’s refer to NeoPXL8’s eight outputs as “0” through “7,” sequentially. Outputs 4, 5, 6 and 7 are fixed to specific Feather pins (13, 12, 11 and 10) and *cannot* be changed, period. Outputs 0, 1, 2, and 3 offer a “this” or “that” choice.

On the component side of the FeatherWing you’ll see several **solder pad** groups, labeled “n0”, “n1”, “n2” and “n3”.

Each of these four pins has a default assignment. To change a pin to an alternate setting, use a hobby knife or file to cut the trace between the center and default pads, then apply a solder bridge between the center and alternate pad.

Output Number	Default Pin	Alternate Pin
n0	SCK	RX
n1	D5	TX
n2	D9	SCL
n3	D6	SDA

NeoPXL8 Breakout Board



If you're working on a solderless breadboard or aren't using a Feather form-factor microcontroller, the [Adafruit NeoPXL8 Friend](https://adafru.it/CJd) provides similar utility to the NeoPXL8 FeatherWing but in a non-FeatherWing package.

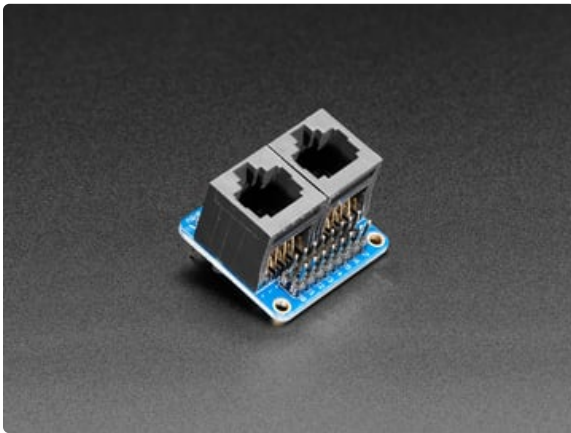
The NeoPXL8 Friend breakout board provides logic level shifting from 3V devices to as many as eight NeoPixel strips, which can be connected one of two ways:

The **8x2** row header (16 pins total) provides a “**Fadecandy-style**” connection.

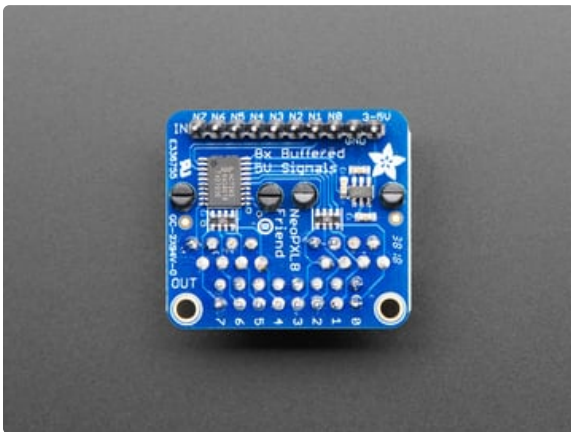
[Fadecandy](https://adafru.it/BI7) is a USB NeoPixel controller popular in large-scale LED installations. The 8x2 connector is fairly compact and low-profile. Assembled this way, the NeoPXL8 Friend could, with suitable Arduino code, function as a swap-in replacement in an existing Fadecandy project, or could make use of NeoPixels already wired for such.

The **two RJ45 connectors** provide an “**OctoWS2011-style**” connection.

[OctoWS2811](https://adafru.it/BI8) is a similar hardware-and-software combo for large NeoPixel setups using the [PJRC Teensy 3.2](https://adafru.it/j7a) microcontroller. These connections are bulkier but latch into place and ensure a specific polarity. Assembled this way, the NeoPXL8 Friend could, with suitable Arduino code, function as a swap-in replacement in an existing OctoWS2811 project, or could make use of NeoPixels already wired for such.



In either case, the NeoPixel headers mount on the *FLAT SIDE* of the NeoPXL8 Friend — the side with **NO COMPONENTS** — and are soldered on the *component side*. The breadboarding pins are done the **OPPOSITE** way — install from the component side, solder on the flat side.



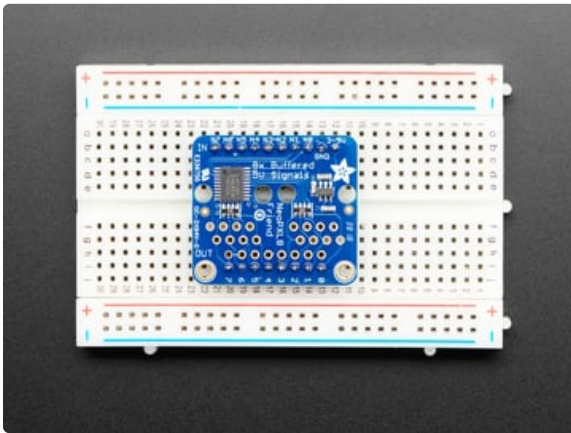
Additionally, you still need to build a *wiring harness* between these connectors and your NeoPixel LEDs. The above is just a starting point.

Adopting these two wiring schemes mean that **any existing tutorials** for wiring up Fadecandy or OctoWS2811 projects are **applicable to NeoPXL8** as well — it's not starting over with a third incompatible standard.

[This tutorial shows some Fadecandy-style wiring harnesses being made \(https://adafru.it/BlA\)](https://adafru.it/BlA), using a ribbon cable and 8x2 IDC header, plus lots of soldering and heat-shrink. A multimeter with continuity beep is helpful in keeping track of data wires and grounds!

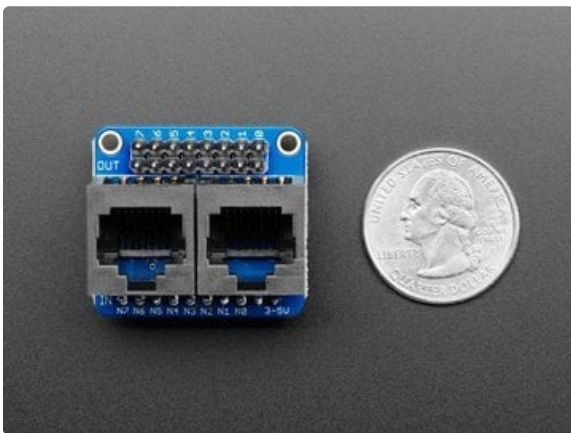
[The OctoWS2811 product page on the PJRC web site \(https://adafru.it/Blb\)](https://adafru.it/Blb) shows RJ45 wiring harnesses being made by cutting open Ethernet cables.

You will also need to safely distribute 5 Volt power to all of your NeoPixels. This is **not** done through the NeoPXL8 board — it needs to be **part of your wiring harness**. [This tutorial explains \(https://adafru.it/Blc\)](https://adafru.it/Blc) some of the issues in powering large-scale NeoPixel installations.



A third option is to install header pins on the NeoPixel outputs, so both the “ins” and “outs” are breadboardable...this may be useful for certain prototyping tasks.

There isn't clearance for the outputs on a regular-size breadboard, but linking two breadboards side-by-side is often done with wider devices like this.



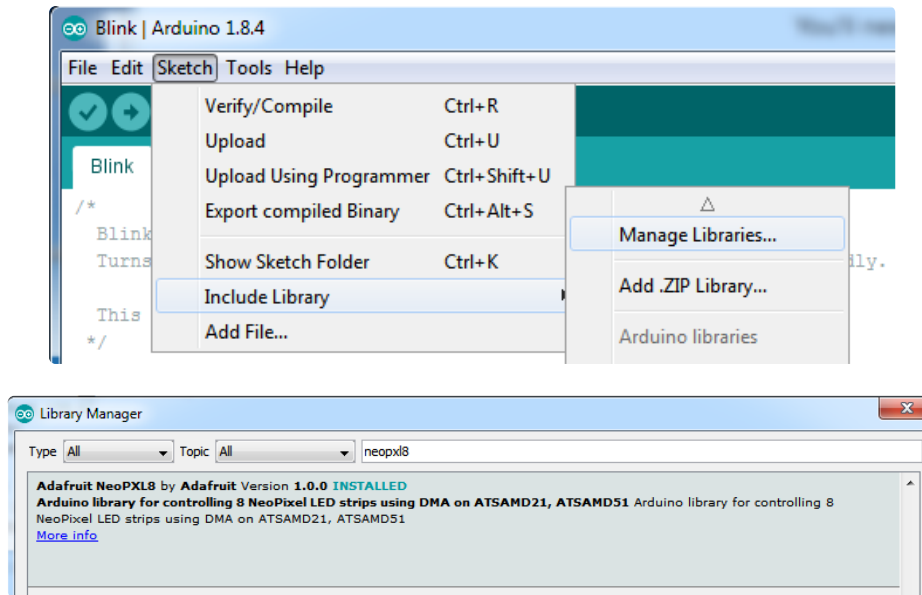
Unlike the FeatherWing, the NeoPXL8 Friend has space for *both* an **8x2** row header *and* two **RJ45** connectors at the same time.

HOWEVER, if using the 8x2 connector, depending how one's ribbon cable is crimped and strain-relieved, the RJ45 connectors may still be in the way...so you may want to leave those two connectors off unless you're certain to need them.

Because we're using hardware tricks, **NeoPXL8 output works only on specific microcontroller pins**. The Arduino library examples explain in more detail. On boards like the Adafruit Metro Express or Arduino Zero, it's conveniently on digital pins 0 through 7, so you can use an 8-pin ribbon cable to link directly to the NeoPXL8 Friend's 8 inputs. In other situations, the pins may be strewn in different places around the board.

NeoPXL8 Arduino Library

The `Adafruit_NeoPXL8` library can be installed using the **Arduino Library Manager**. You will also need the `Adafruit_NeoPixel` and `Adafruit_ZeroDMA` libraries.



Don't forget to add **SAMD board support** installed through the **Boards Manager** (*Adafruit SAMD* or *Arduino SAMD* depending which board you're using). [See the Feather M0 guide for an example \(https://adafru.it/BIA\)](https://adafru.it/BIA)

Example Code

There is a single `Adafruit_NeoPXL8` example sketch called “strandtest,” and it's pretty minimal. There's *no need* for a whole graphics demo, because **most NeoPXL8 functions are identical to their NeoPixel counterparts**, and there are plenty of NeoPixel examples around already. The differences mostly relate to pin assignments.

First, include `Adafruit_NeoPXL8.h` instead of `Adafruit_NeoPixel.h`:

```
#include <Adafruit_NeoPXL8.h>
```

Then declare an `Adafruit_NeoPXL8` object (instead of an `Adafruit_NeoPixel` object) — we'll call our object “leds” in the example — passing up to three arguments:

```
Adafruit_NeoPXL8 leds(LENGTH, PINS, FORMAT);
```

The constructor's **first argument** is the number of NeoPixels in **each** of the eight strands. In other words, the total number of NeoPixels will be **8 times** this value. If this value is set at 60, then the total number of NeoPixels is 480 (60 × 8).

The strands *don't* all need to be the same length. In that case, give the length of the *longest* strand. But from the software's point of view there's still 8 times this many pixels...it's going to require that much memory regardless and there will be gaps in how pixels are addressed. It's *best and optimal* if all 8 strands are in use and the same length, but not *required*.

NeoPXL8 is a RAM hog, but on most M0 boards, depending on your code's other needs, you can often get 250 RGB pixels per strand (2,000 pixels total). 300 (2,400 total) is starting to push things. Scale back for RGBW pixels, which require about 33% more RAM.

M4 boards have *six times* the RAM and can handle absurd *thousands* of pixels...but in reality, you might not want more than a couple thousand, tops, just to allow the CPU enough time to *compute* all those pixels at a good frame rate. For an M0 project, maybe a few hundred to a thousand or so. There's no hard limit, you just need to experiment what's practical to compute.

The **second argument** is an 8-element `int8_t` array indicating which pins to use for outputs 0 through 7.

This is *extremely hardware-dependent*, and you'll see in the `strandtest` sketch there are several different arrays given for different situations. For example, using a Feather M0, NeoPXL8 FeatherWing with the default pin assignments and the Fadedcandy-style connector, it's:

```
int8_t pins[8] = { PIN_SERIAL1_RX, PIN_SERIAL1_TX, MISO, 13, 5, SDA, A4, A3 };
Adafruit_NeoPXL8 leds(NUM_LED, pins, NEO_GRB);
```

As explained on the prior page, on the **Feather M0**, outputs 3, 6 and 7 are **not negotiable** — they *must* go to pins 13, A4 and A3 (these can be *reordered* — you can change which is considered output 3, 6 or 7 — but you cannot select completely different pins). For the remaining 5 outputs, there's a limited ability to reassign things:

Output Number	Default Pin	Alternate Pin
0	PIN_SERIAL1_RX	12
1	PIN_SERIAL1_TX	10
2	MISO	11
4	5	SCK
5	SDA	MOSI

Feather M4 is a little different. There, outputs 4 through 7 are **not negotiable** — they *must* go to pins 13 through 10 (though they can be *reordered* within that series). For the other four outputs, there's a limited ability to reassign things:

Output Number	Default Pin	Alternate Pin
0	SCK	RX
1	3	TX
2	9	SCL
3	6	SDA

Changing these assignments requires cutting and bridging pads on the component side of the FeatherWing board, plus *matching changes* to the pins[] array.

If *neither* pin choice will work for your application, use a value of **-1** for that element of the pins[] array, as many as required. You will lose the corresponding NeoPixel output, and it will still take up RAM and pixel indices as if it were there, but the pin can then be used for normal GPIO.

Different boards will have different pinouts, you'll see this in the example code. The Metro M4 uses an entirely different set of pins. And on the Metro M0 (or Arduino Zero), things are super easy...if you want to use digital pins 0-7 as the eight NeoPixel outputs, just pass NULL instead of a pins[] array, or leave this argument off entirely. **RP2040** boards have their own rules, explained on the next page.

The **third argument** to the constructor is the NeoPixel data format or **color order**. Different manufacturers of "NeoPixel compatible" LEDs may use a different R/G/B (and sometimes W) byte order...and even among single manufacturers, different production runs may change the order as required for big customers or if they find it can economize the design. This is very similar to the last argument to the Adafruit_NeoPixel constructor, except any NEO_KHZ800 or NEO_KHZ400 values are ignored (only 800 KHz is supported). You can leave this argument off to use the default NEO_GRB color order.

All 8 strands must be the **same type and color order**; e.g. you cannot mix RGB and RGBW NeoPixels.

From a coding perspective, the rest appears nearly identical to a regular NeoPixel sketch.

Call the object's begin() function to allocate memory and initialize the pin outputs:

```
leds.begin();
```

You can check for a return value of "true" to confirm the allocation was successful.

Then `setPixelColor()` to modify individual pixel values and `show()` to issue data to the strands, just like a regular NeoPixel sketch.

For functions that take a pixel index (e.g. `setPixelColor()`, `getPixelColor()`), **all the pixels are treated as if one long continuous strand**. For example:

If the strand **length** was declared as **60**...that's 480 pixels total...

- Pixels 0 – 59 are on strand 0
- Pixels 60 – 119 are on strand 1
- Pixels 120 – 179 are on strand 2
- Pixels 180 – 239 are on strand 3
- Pixels 240 – 299 are on strand 4
- Pixels 300 – 359 are on strand 5
- Pixels 360 – 419 are on strand 6
- Pixels 420 – 479 are on strand 7

This is true even if some strands are physically shorter, or if an element in the `pins[]` array is -1. The unused bits just vanish into the unknown, like that one light switch that doesn't seem to control anything in the house.

One small difference from `Adafruit_NeoPixel` is that the `setBrightness()` function, in combination with `setPixelColor()` and `getPixelColor()`, work better here. The original color value assigned to a pixel using `setPixelColor()` will *always* be accurately returned by `getPixelColor()`, regardless of the current brightness setting. In `Adafruit_NeoPixel` this is a “destructive” operation and only an approximation is returned.

That's the vital stuff to know.

[Remaining functions and esoterica are documented on GitHub. \(https://adafru.it/Blk\)](https://adafru.it/Blk)

RP2040 Use

NeoPXL8 now also works on boards with the **RP2040 microcontroller**, such as the [Raspberry Pi Pico](https://adafru.it/QOF) (<https://adafru.it/QOF>) or [Adafruit Feather RP2040](https://adafru.it/REP) (<https://adafru.it/REP>).

By and large it functions the same, with just some minor changes to the rules...

- Requires the **Earle Philhower RP2040** board support in Arduino, *not* Mbed RP2040. If you don't already have this installed, [the steps are documented in this guide.](https://adafru.it/UPF) (<https://adafru.it/UPF>)
- The pin list passed to the constructor...rather than Arduino pin numbers (silkscreened on the top of some boards), this requires **GPIO bit numbers**, which aren't always the same. On the Feather RP2040 and ItsyBitsy RP2040, GPIO bit numbers are silkscreened on the *bottom* of the board. On Raspberry Pi Pico, the numbers are the same, and Pico guidelines such as avoiding GP15 apply.
- The 8 GPIO bits must be **contiguous**, e.g. GP00 through GP07. They do *not* need to be *aligned* to any particular boundary though, just *contiguous*. 1–8, 3–10 and so forth.
- It's more efficient with RAM, requiring about 2X as much as the regular single-strand NeoPixel library, vs. 4X RAM on SAMD chips. And the RP2040 already has *lots* of RAM!

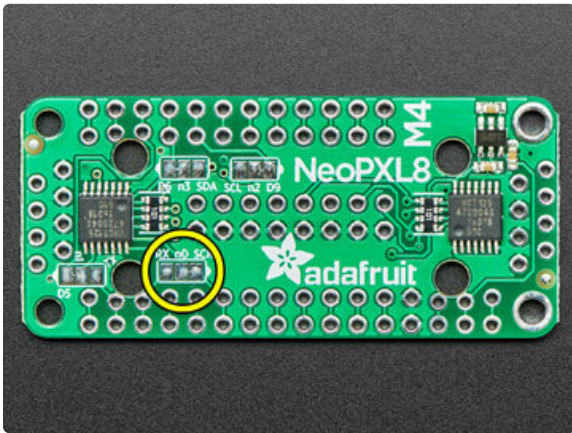
Hardware

Since RP2040 is a **3.3 Volt** device, you'll want to convert logic levels to the NeoPixel supply voltage (**5V** typ.).

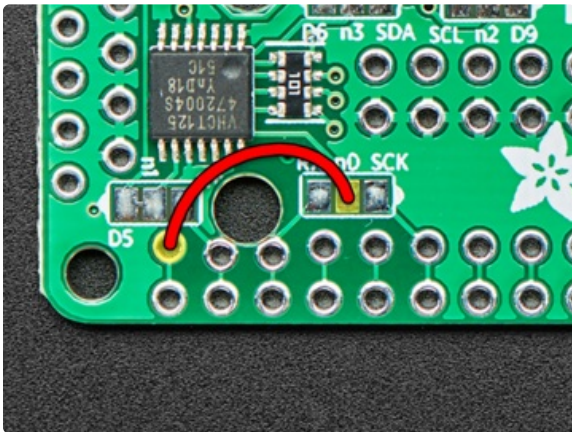
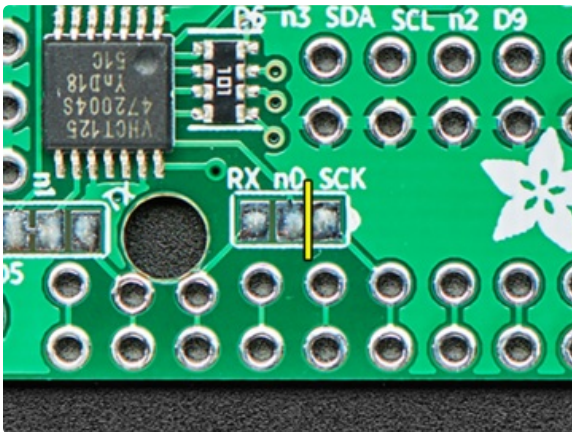
For most boards, our [NeoPXL8 Friend](https://adafru.it/CJd) (<https://adafru.it/CJd>) does this nicely. It's explained further on the "NeoPXL8 Breakout Board" page of this guide.

However...*if* you're using a [Feather RP2040](https://adafru.it/REP) (<https://adafru.it/REP>), and *if* you're comfortable with some fine soldering, our [NeoPXL8 FeatherWing M4](https://adafru.it/Jfy) (<https://adafru.it/Jfy>) (*not* the M0 version) can be adapted. Then you have a tidy package with less wiring!

If the work looks troublesome for your current soldering skill, no worries, you can still wire up a NeoPXL8 Friend. And to reiterate, this modification specifically requires the **M4** version of the FeatherWing.



Locate the **n0** selector pads on the FeatherWing and use an X-Acto knife or small file to **cut the trace** between n0 and SCK.

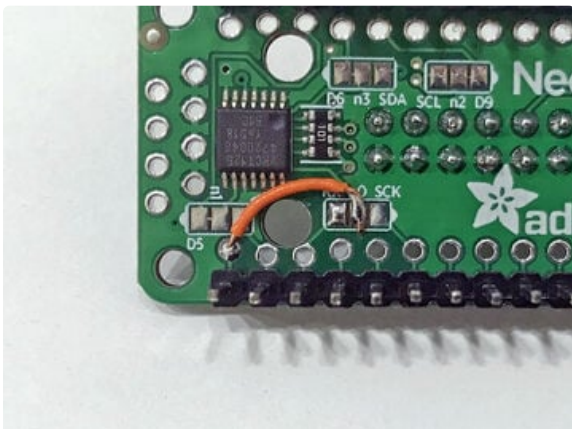


Solder a short piece of insulated solid-core wire between the now-isolated **n0** surface pad and the last through-hole via in this row.

If you'll be using the RJ-45 connections for pixels, make sure this wire clears the mounting hole in the board.

This step may take a few tries and some desoldering wick. Those pads are *designed* for solder bridges, but now we want to keep n0 isolated.

Remember when installing the headers that these components are on the *bottom* of the FeatherWing.



All other selectable pins — n1 through n3 — should be left in their default configurations.

Software

The strandtest Arduino sketch includes some RP2040-specific notes. You'll need to set up the pins[] list and call the constructor like so:

```
int8_t pins[8] = { 6, 7, 9, 8, 13, 12, 11, 10 }; // GP## indices!  
Adafruit_NeoPXL8 leds(NUM_LED, pins, NEO_GRB);
```

On the Feather RP2040, those correspond to digital pins 4, 5, 9, 6, 13, 12, 11, and 10 on the top silkscreen. This is the only 8-pin list that works between NeoPXL8 and the Feather RP2040.

For other hardware, there's usually more flexibility...just provide a list of eight contiguous GPIO bits. They don't need to be in-order, merely contiguous.

And that's it! Most existing NeoPXL8 sketches (which are very similar to regular NeoPixel sketches) will then carry right over. Some may need small changes...and that's not always because of NeoPXL8, it's sometimes unrelated hardware differences.

For example, the [Ooze Master 3000 \(https://adafru.it/HpD\)](https://adafru.it/HpD) project can be adapted with just a couple code changes...

First, the pin list around line 23 should be modified...either the list given above (if using Feather RP2040 + NeoPXL8 FeatherWing M4), or a list of GPIO bits if using a different board with NeoPXL8 Friend.

Second, change the randomSeed() call (around line 68) to reference only pin A0, not A0 + A5. The RP2040 only has four analog inputs. Or you can just delete the line. The code is just using unconnected analog inputs to randomize things on startup, but it's not vital.

```
randomSeed(analogRead(A0));
```

The code should then compile successfully for RP2040 boards.



Downloads

Arduino Libraries

- Adafruit_NeoPXL8 [code](https://adafru.it/Blw) (https://adafru.it/Blw) and [documentation](https://adafru.it/Blk) (https://adafru.it/Blk) on GitHub.
- Adafruit_NeoPixel [code](https://adafru.it/aZU) (https://adafru.it/aZU) on GitHub.
- Adafruit_ZeroDMA [code](https://adafru.it/lnb) (https://adafru.it/lnb) on Github.

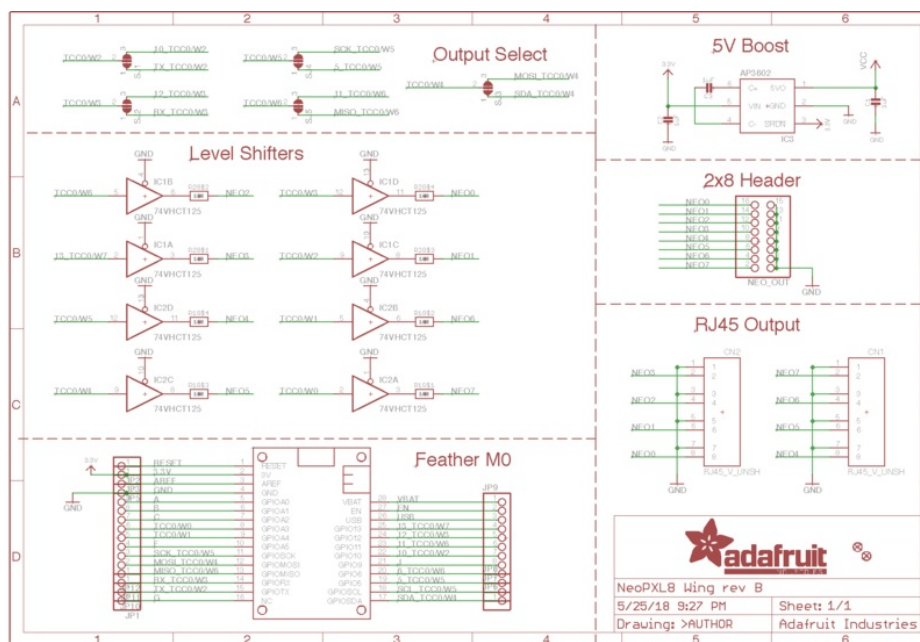
Datasheets and Technical Information

- [ATSAMD21 datasheet](https://adafru.it/kUf) (https://adafru.it/kUf) (main chip on Feather M0, Metro M0 and Arduino Zero)
- [ATSAMD51 information](https://adafru.it/Bf8) (https://adafru.it/Bf8) (main chip on Feather M4, Metro M4 and Grand Central)

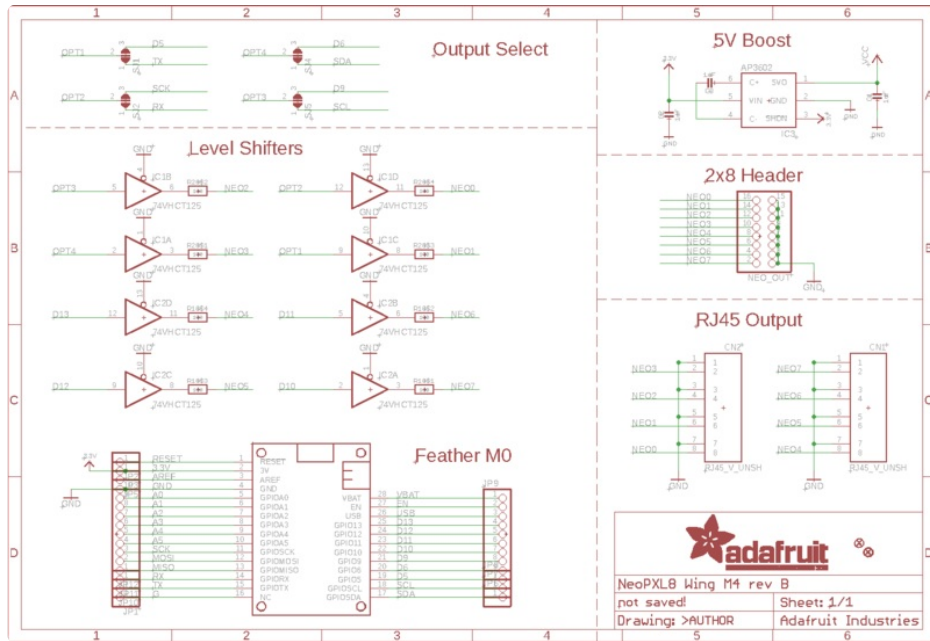
Schematics & Fab Prints

[EagleCAD PCB files on GitHub](https://adafru.it/CXI) (https://adafru.it/CXI)

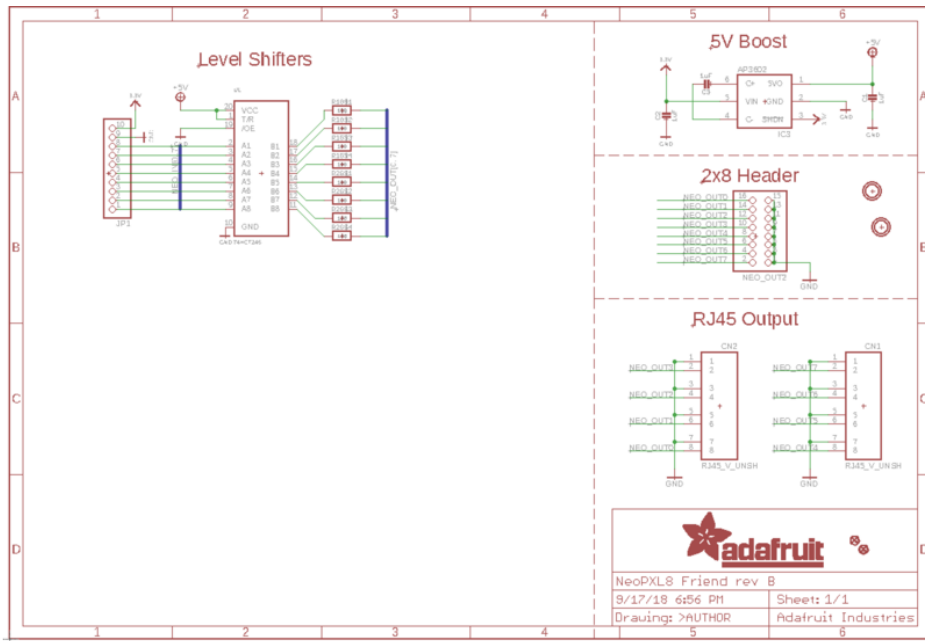
NeoPXL8 FeatherWing **M0** (click to embiggen):

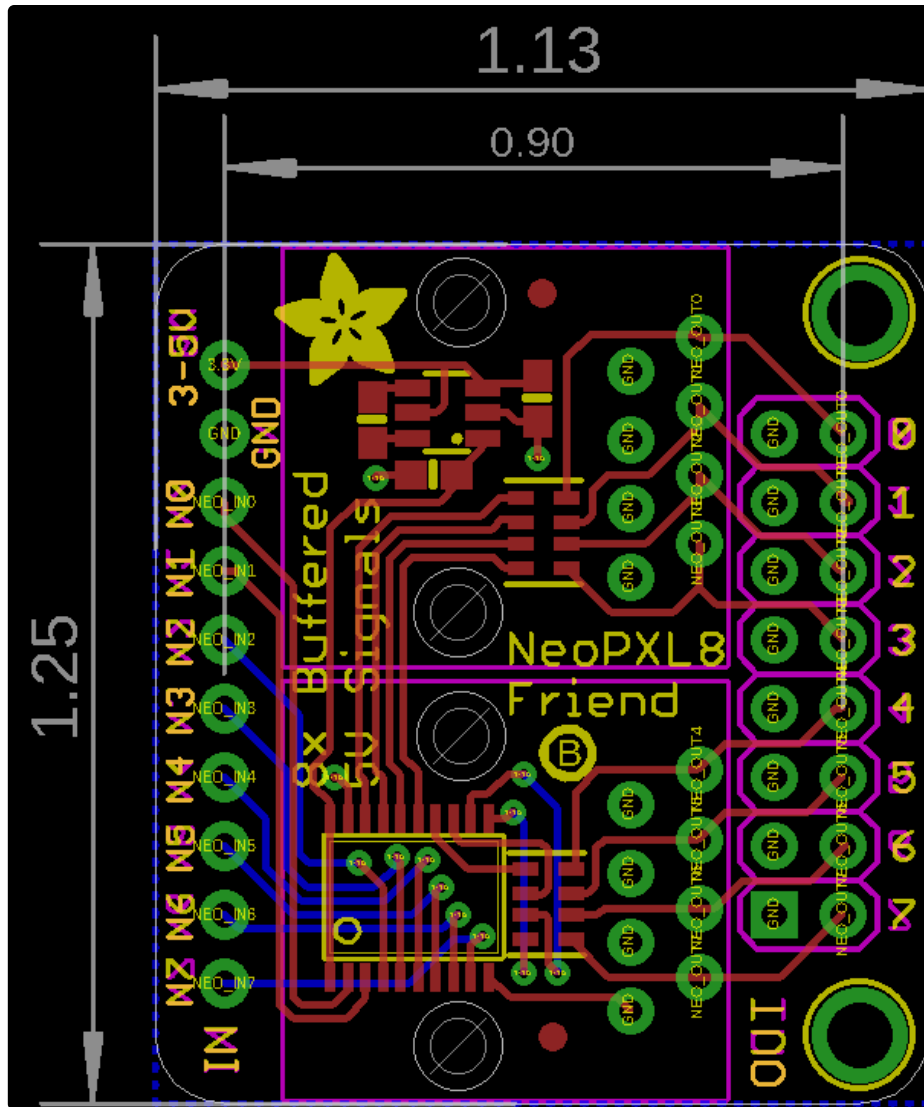


NeoPXL8 FeatherWing **M4** (click to embiggen):



NeoPXL8 Friend (click to embiggen):





Components for Fritzing App:

- [NeoPXL8 FeatherWing](https://adafru.it/CJb) (https://adafru.it/CJb)
- [NeoPXL8 Friend breakout board](https://adafru.it/CJc) (https://adafru.it/CJc)

