

# IEC Low Voltage General Purpose Protection

## Ferrule fuse-links

### 10x38 gG 400 to 690VAC from 0.5 to 32A

Ferraz Shawmut aM and gG fuse-links cover a wide range of physical sizes and ampere ratings for 400, 500, and 690VAC for protection in electrical distribution circuits and various industrial applications. Most ratings are available in size 8x31 and size 10x38 with an optional indicator, and in size 14x51 and 22x58 with an optional striker to activate an auxiliary contact. All cylindrical fuse-links have ceramic bodies and silver-plated ferrules. Our technology and process was designed to ensure highly reliable technical performance.



#### Benefits

- Small size
- Full range protection
- Safest and most reliable protection system
- High limiting and breaking capacity
- Visual blown fuse indication
- Low power dissipation

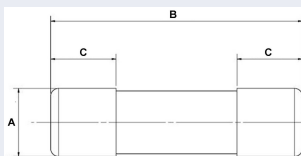
#### Applications

gG type for protection of line, cable against overload and short circuit in various industrial application and electrical distribution circuits.

Size	Rated Voltage (V)	Nominal Current (A)	Class	Catalog Number w/o indicator	Reference Number w/o indicator	Catalog Number with indicator	Reference Number with indicator
10x38	500	0.5	gG	FR10GG50V0.5	C211027	-	-
10x38	500	1	gG	FR10GG50V1	B212061	-	-
10x38	500	2	gG	FR10GG50V2	D213098	FR10GG50V2I	S216653
10x38	500	4	gG	FR10GG50V4	X213598	FR10GG50V4I	E217170
10x38	500	6	gG	FR10GG50V6	K215128	FR10GG50V6I	T218195
10x38	500	8	gG	FR10GG50V8	D217169	FR10GG50V8I	V219231
10x38	500	10	gG	FR10GG50V10	S218194	FR10GG50V10I	E222207
10x38	500	12	gG	FR10GG50V12	W219761	FR10GG50V12I	H200751
10x38	500	16	gG	FR10GG50V16	G200750	FR10GG50V16I	H201809
10x38	500	20	gG	FR10GG50V20	D211028	FR10GG50V20I	X211551
10x38	500	25	gG	FR10GG50V25	E213099	FR10GG50V25I	W212585
10x38	400	32	gG	FR10GG40V32	A214107	FR10GG40V32I	Z213600

Size	Rated Voltage (V)	Nominal Current (A)	Class	Catalog Number w/o indicator	Reference Number w/o indicator
10x38	690	1	gG	FR10GG69V1	R302787
10x38	690	2	gG	FR10GG69V2	S302788
10x38	690	4	gG	FR10GG69V4	T302789
10x38	690	6	gG	FR10GG69V6	V302790
10x38	690	8	gG	FR10GG69V8	W302791
10x38	690	10	gG	FR10GG69V10	X302792
10x38	690	12	gG	FR10GG69V12	Y302793
10x38	690	16	gG	FR10GG69V16	Z302794

#### Dimensions (mm)



Size	A	B	C
10x38	10.3	38	10.5

#### Blown fuse indicator



Before After

#### Ratings

500VAC 0.5 to 25A  
400VAC 32A  
690VAC 1 to 16A  
120kA breaking capacity

#### Standards & Approvals

IEC 60269-1 & -2

Approved by Lloyd's Register of Shipping and Bureau Veritas

RoHS Compliant



#### Related products

Fuse-holders: Modulostar® CMS10

Materials: body: ceramic

Materials: contact: silver plated copper

Product weight: 8.3g

Packaging: 10 pieces

# IEC Low Voltage General Purpose Protection

## Ferrule fuse-links

10x38 gG 400 to 690VAC from 0.5 to 32A



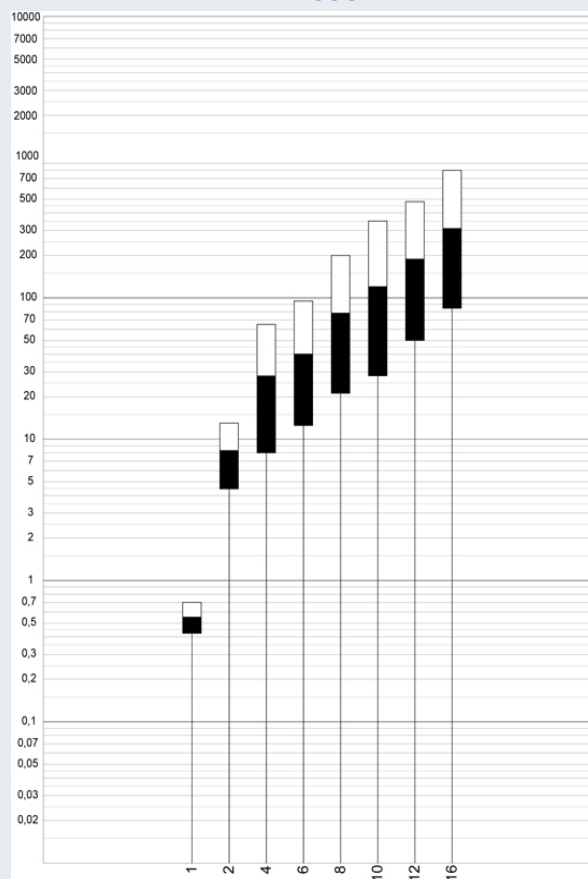
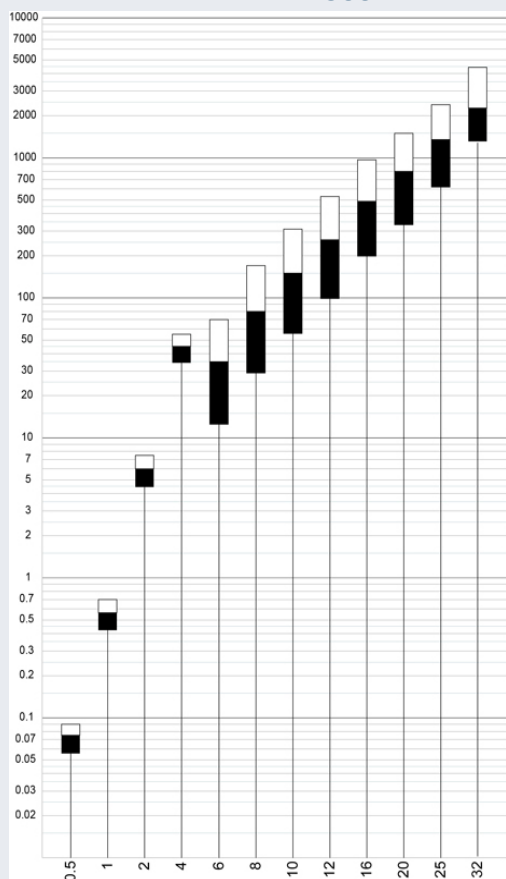
Size	Rated Voltage (V)	Nominal Current (A)	Breaking Capacity @ Rated Voltage (kA)	Watts Loss @ 100% In (W)
10x38	500	0.5	120	0.07
10x38	500	1	120	0.45
10x38	500	2	120	0.5
10x38	500	4	120	0.85
10x38	500	6	120	0.95
10x38	500	8	120	1.15
10x38	500	10	120	1.3
10x38	500	12	120	1.4
10x38	500	16	120	1.9
10x38	500	20	120	2.4
10x38	500	25	120	2.7
10x38	400	32	120	2.8

Size	Rated Voltage (V)	Nominal Current (A)	Breaking Capacity @ Rated Voltage (kA)	Watts Loss @ 100% In (W)
10x38	690	1	120	0.45
10x38	690	2	120	0.55
10x38	690	4	120	0.6
10x38	690	6	120	0.9
10x38	690	8	120	1
10x38	690	10	120	1.15
10x38	690	12	120	1.4
10x38	690	16	120	1.9

### Characteristics I<sup>2</sup>t

500V

690V



Prearcing and Clearing I<sup>2</sup>t (A<sup>2</sup>s)

Nominal Current (A)

# IEC Low Voltage General Purpose Protection

## Ferrule fuse-links

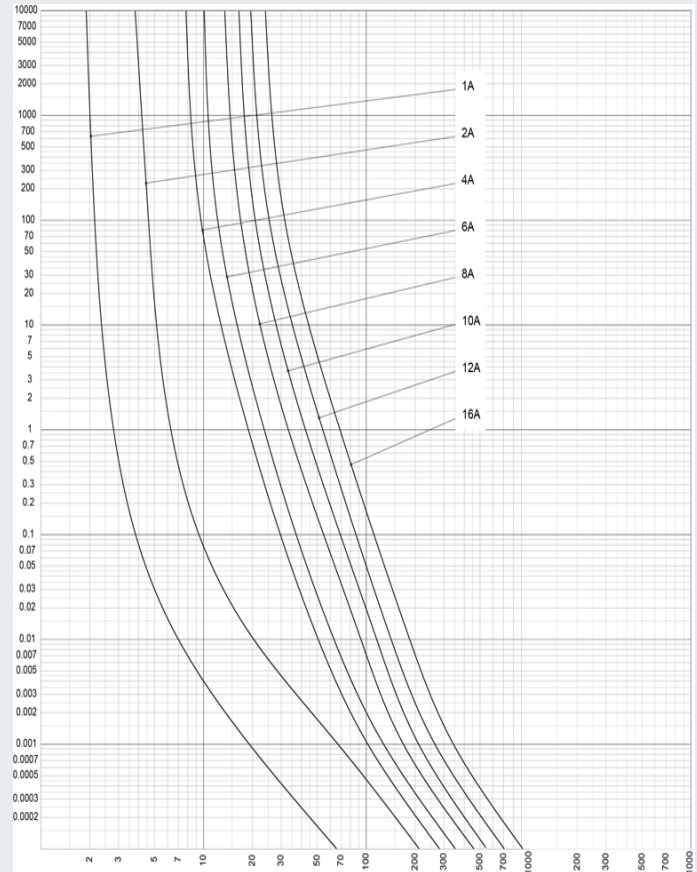
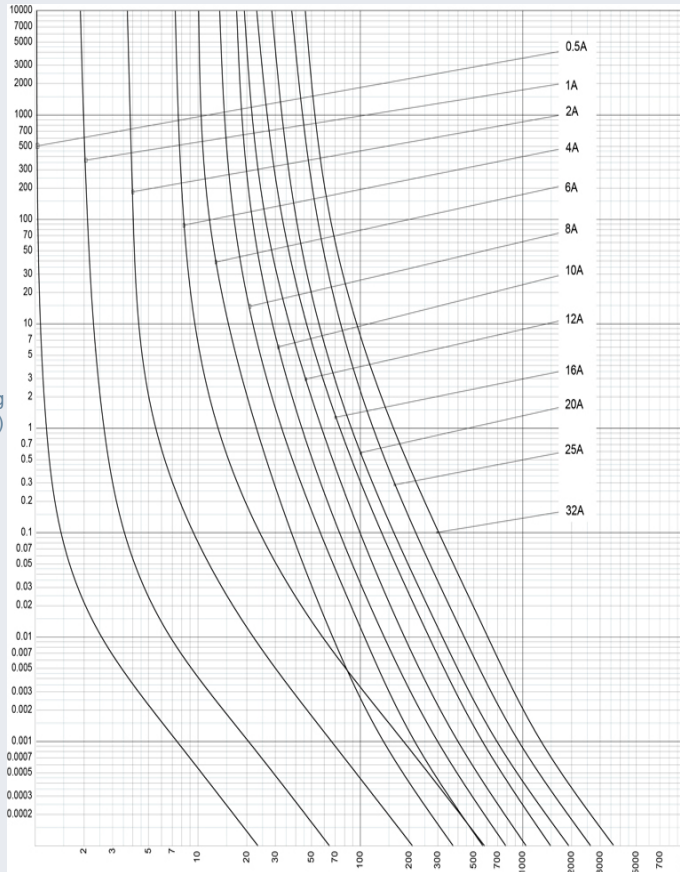
10x38 gG 400 to 690VAC from 0.5 to 32A



### Time current characteristics

500V

690V

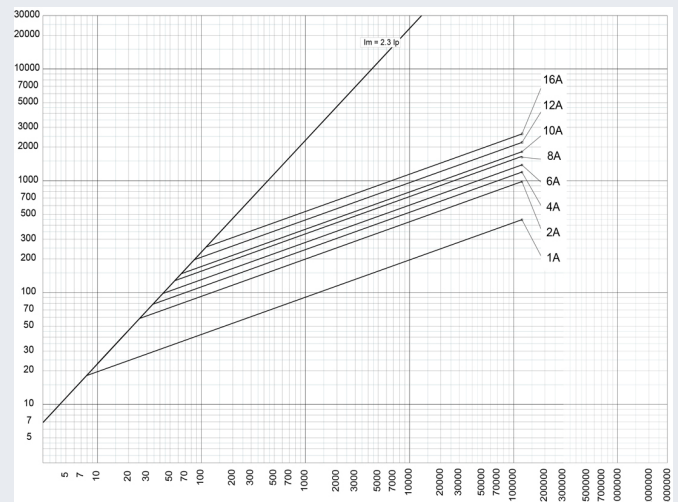
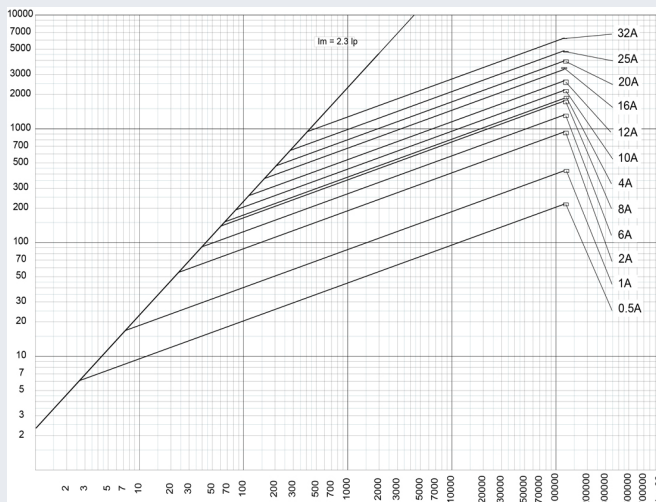


rms value of prearc current (A) ± 10%

### Peak let thru characteristics

500V

690V



50 Hz rms symmetrical prospective current ( $I_p$ ) (A)