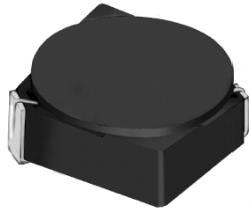


SMD Power Inductor CDRH3D16



Description

- Ferrite drum core construction.
- Magnetically shielded.
- L × W × H: 4.0 × 4.0 × 1.8 mm Max.
- Product weight: 80mg (Ref.)
- Moisture Sensitivity Level: 1
- RoHS compliance.

Environmental Data

- Operating temperature range: -40°C ~ +100°C (including coil's self temperature rise)
- Storage temperature range: -40°C ~ +100°C
- Solder reflow temperature: 260 °C peak.

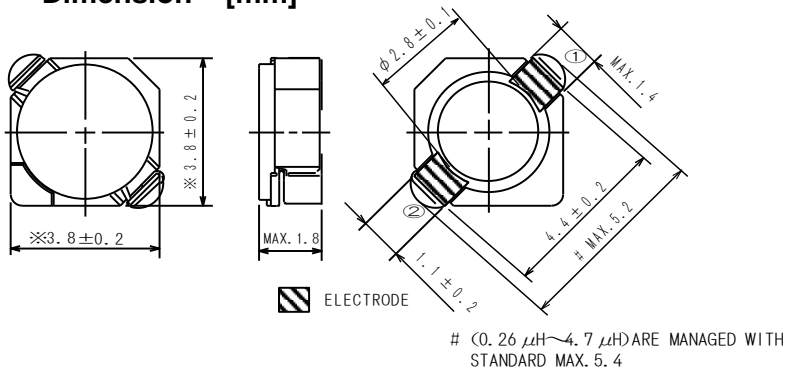
Packaging

- Carrier tape and reel packaging
- 7.0" diameter reel
- 1000pcs per reel

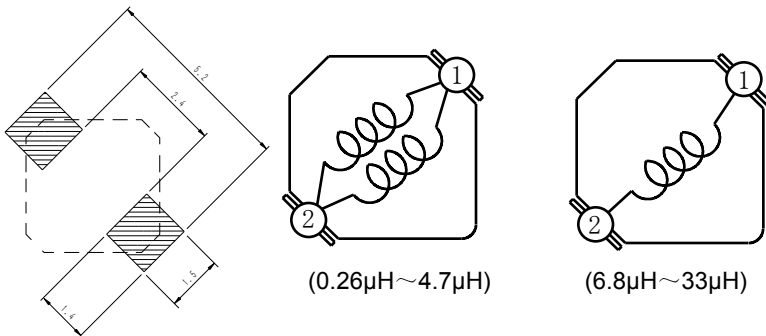
Applications

- Ideally used in Mobile phone, PDA, MP3, DSC/DVC, Portable DVD, etc as DC-DC converter inductors.

Dimension - [mm]



Land pattern and Schematics - [mm]





Electrical Characteristics

Part Name	Stamp	Inductance (μH) [within] ※1	D.C.R. ($\text{m}\Omega$) Max. (Typ.) (at 20°C)	Rated Current (A) ※2
CDRH3D16NP-R26NC	R	$0.26 \pm 35\%$	27.5(21)	3.60
CDRH3D16NP-R47NC	S	$0.47 \pm 35\%$	35(27)	2.75
CDRH3D16NP-0R7NC	T	$0.7 \pm 35\%$	43(33)	2.25
CDRH3D16NP-1R1NC	U	$1.1 \pm 35\%$	50(38)	1.90
CDRH3D16NP-1R5NC	A	$1.5 \pm 30\%$	52(40)	1.55
CDRH3D16NP-2R2NC	C	$2.2 \pm 30\%$	72(55)	1.20
CDRH3D16NP-3R3NC	E	$3.3 \pm 30\%$	85(65)	1.10
CDRH3D16NP-4R7NC	G	$4.7 \pm 30\%$	105(80)	0.90
CDRH3D16NP-6R8NC	I	$6.8 \pm 30\%$	170(130)	0.73
CDRH3D16NP-100NC	K	$10 \pm 30\%$	210(160)	0.55
CDRH3D16NP-150NC	M	$15 \pm 30\%$	295(225)	0.45
CDRH3D16NP-220NC	O	$22 \pm 30\%$	430(330)	0.40
CDRH3D16NP-330NC	Q	$33 \pm 30\%$	675(520)	0.32

※1. Inductance measuring condition: at 100kHz.

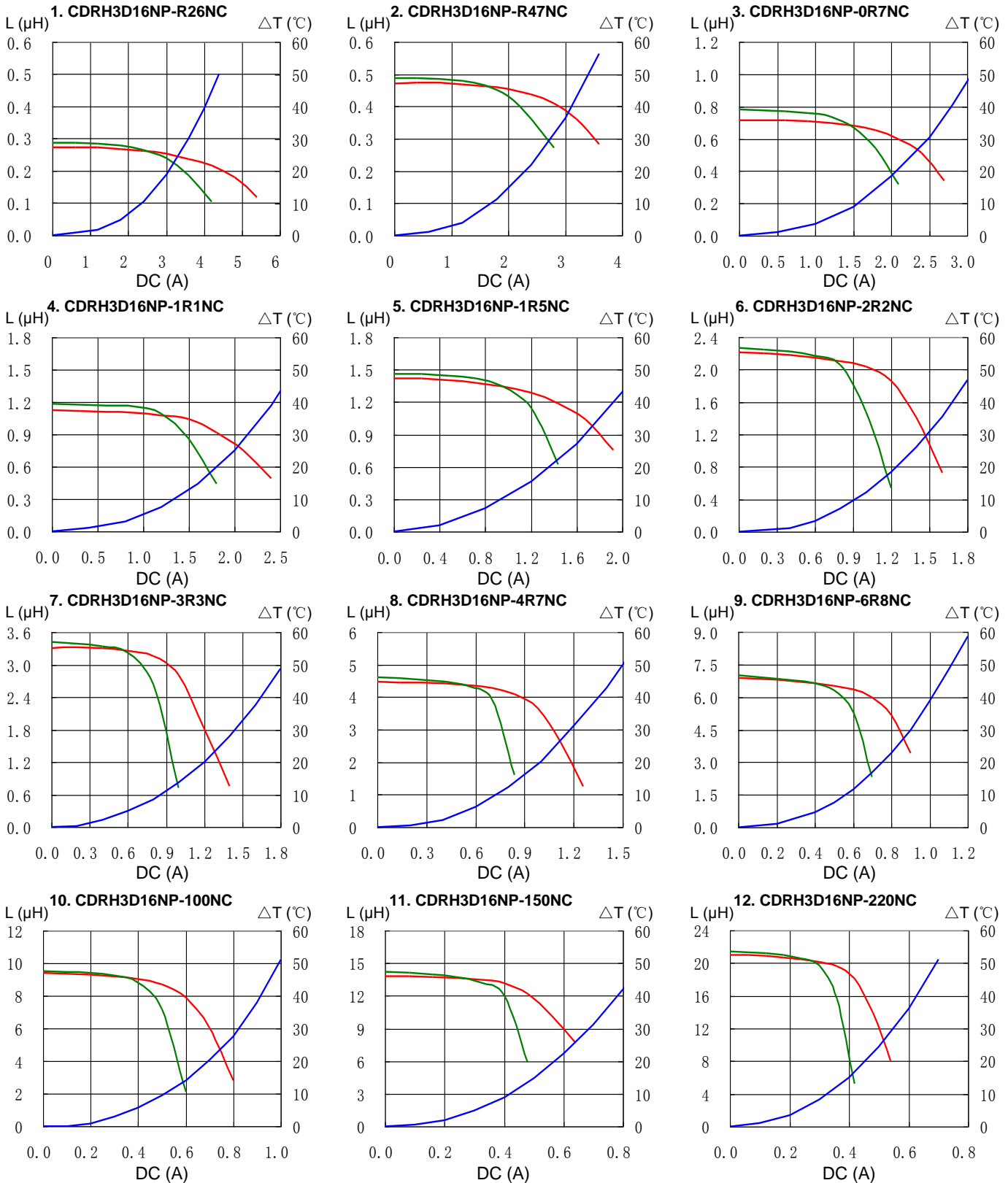
※2. Rated current: The DC current at which the inductance decreases to 65% of its nominal value or when $\Delta t=30^\circ\text{C}$, whichever is lower ($T_a=20^\circ\text{C}$).

SMD Power Inductor CDRH3D16

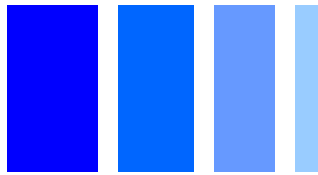


Saturation Current & Temperature Rise Graph

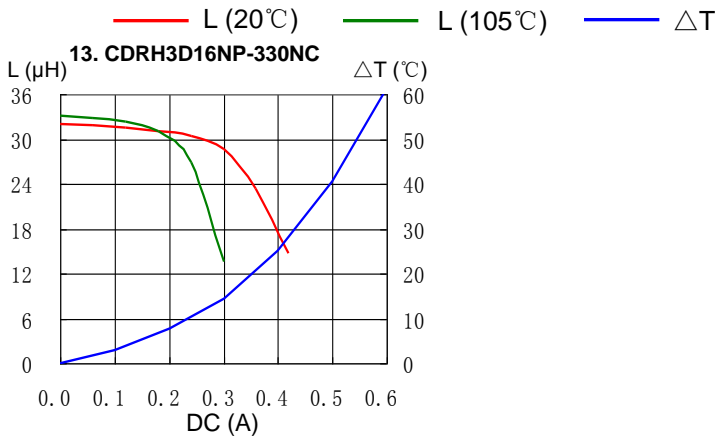
— L (20°C) — L (105°C) — ΔT



SMD Power Inductor CDRH3D16

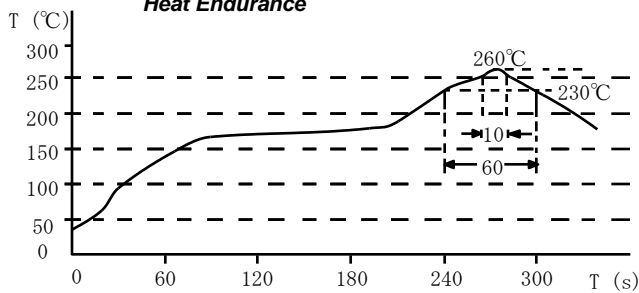


Saturation Current & Temperature Rise Graph

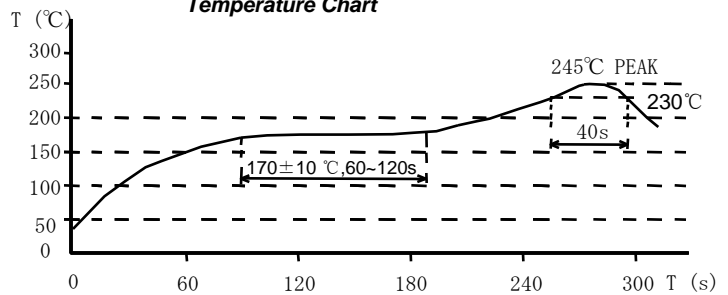


Solder Reflow Condition

Heat Endurance



Temperature Chart



Please refer to the sales offices on our website - <http://www.sumida.com>

Hong Kong

Tel.+852-2880-6781
FAX.+852-2565-9600
sales@hk.sumida.com

Saitama(Japan)

Tel.+81-48-691-7300
FAX.+81-48-691-7340
sales@jp.sumida.com

Chicago

Tel.+1-847-545-6700
FAX. +1-847-545-6720
sales@us.sumida.com

Shanghai

Tel.+86-21-5836-3299
FAX.+86-21-5836-3266
shanghai.sales@cn.sumida.com

Seoul

Tel.+82-2-6237-0777
FAX.+82-2-6237-0778
sales@kr.sumida.com

Obernzell

Tel.+49-8591-937-0
FAX. +49-8591-937-103
contact@eu.sumida.com

Shenzhen

Tel.+86-755-8291-0228
FAX.+86-755-8291-0338
shenzhen.sales@cn.sumida.com

Singapore

Tel.+65-6296-3388
FAX.+65-6841-4426
sales@sg.sumida.com

Neumarkt

Tel.+49-9181-4509-110
FAX. +49-9181-4509-310
infocomp@eu.sumida.com

Taipei

Tel.+886-2-8751-2737
FAX.+886-2-8751-2738
sales@tw.sumida.com

San Jose

Tel.+1-408-321-9660
FAX.+1-408-321-9308
sales@us.sumida.com