

BATTERY CONTACTS

Designers' Choice

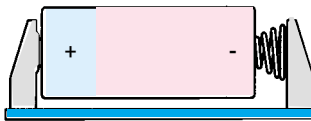


"A" • "AA" • "AAA" • "N" SIZE PC BUTTON & SPRING CONTACTS



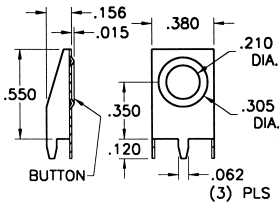
MATERIAL: Frame: .015 Steel, Tin Plate

- Ideal contacts for "A" • "AA" • "AAA" • "N" size batteries.
- Space saving design installs directly onto the PC board
- Contacts available for .062 and .093 thick PC boards
- Reliable spring and/or button assures low contact resistance
- Ideal for self-contained battery compartments

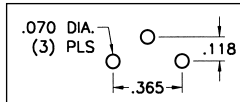


MATERIAL: Frame: .015 Steel, Tin Plate
Uses Cat. No. 211 Spring Contact

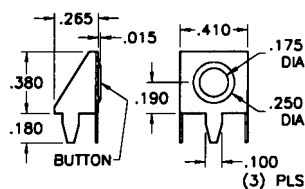
(+) Positive Button



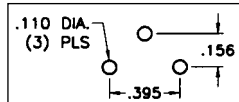
Mounting Detail



CAT. NO. 595 - For "A"

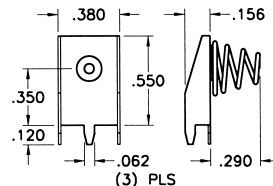


Mounting Detail

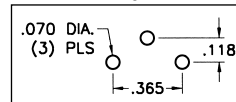


CAT. NO. 637 - For "AA" • "AAA" • "N"

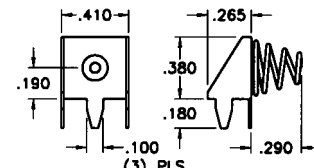
(-) Negative Spring



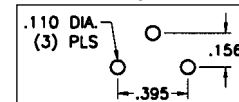
Mounting Detail



CAT. NO. 628 - For "A"



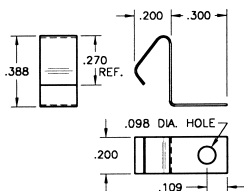
Mounting Detail



CAT. NO. 629 - For "AA" • "AAA" • "N"

SURFACE MOUNT BATTERY CONTACTS

For "AAA" • "AAAA"



CAT. NO. 5230
CAT. NO. 5230TR

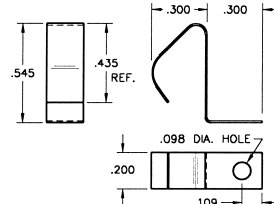


Tape and Reel Spec's: 24mm wide; 12mm pitch;
13 inch reel (400 pieces per reel)

- Economical & reliable contacts are ideal for surface mount applications
- Unique spring tension contacts adjust to variations in battery length
- Reliable spring tension contacts assure low contact resistance
- SMT solder tail with "flow-hole" design for increased joint strength

MATERIAL: .010 Spring Steel, Nickel Plate

For "A" • "AA" • "9V"



CAT. NO. 5231
CAT. NO. 5231TR



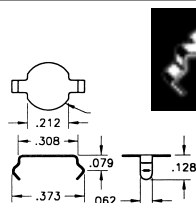
Tape and Reel Spec's: 32mm wide; 12mm pitch;
13 inch reel (400 pieces per reel)

• ECONOMICAL • SPACE SAVING

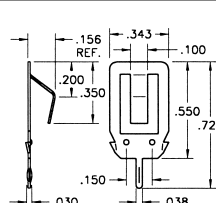
PC BATTERY CONTACTS

- Ideal for self-contained battery compartments
- Contact us for modifications and custom design

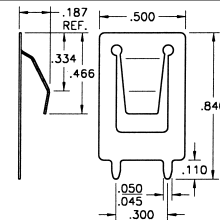
Mounting Detail



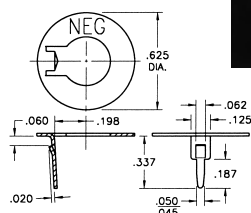
CAT. NO. 2990 .008 Thick, Phosphor Bronze, Nickel Plate



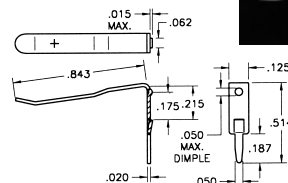
CAT. NO. 108-2 .012 Thick, Spring Steel, Nickel Plate



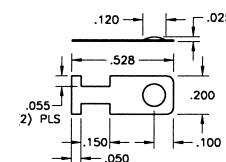
CAT. NO. 109-2 .012 Thick, Spring Steel, Nickel Plate



CAT. NO. 105-3 .020 Thick, Spring Steel, Nickel Plate



CAT. NO. 105-2 .020 Thick, Spring Steel, Nickel Plate



CAT. NO. 230-1 .008 Thick, Spring Steel, Nickel Plate



Mouser Electronics

Authorized Distributor

Click to View Pricing, Inventory, Delivery & Lifecycle Information:

[Keystone Electronics:](#)

[105-2](#) [105-3](#)