

Subplate size 6 with porting pattern according to DIN 24340 form A and ISO 4401 and CETOP-RP 121 H

RE 45052/02.11
Replaces: 01.03

1/4

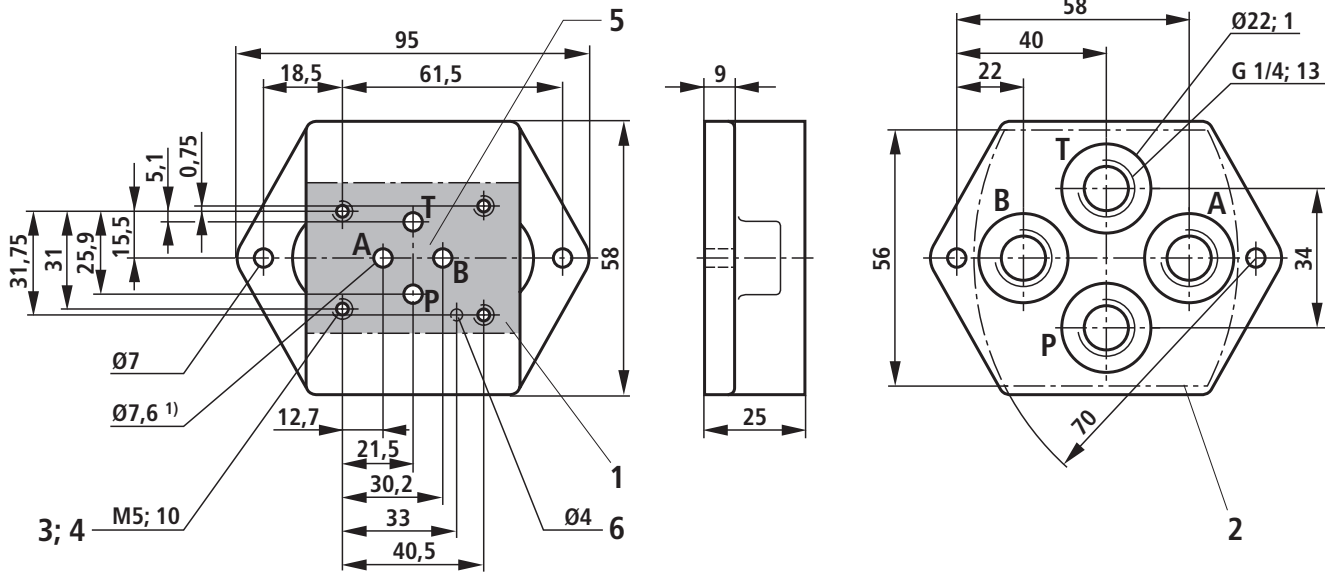
Maximum operating pressure 350 bar
Size 6

Table of contents

Contents	Page
Type G 341/01, G341/60 (G1/4)	2
Type G 342/01, G 342/60 (G3/8)	2
Type G 502/01, G 502/60 (G1/2)	3

Type G 341/01, G341/60 (G1/4) (nominal dimensions in mm)

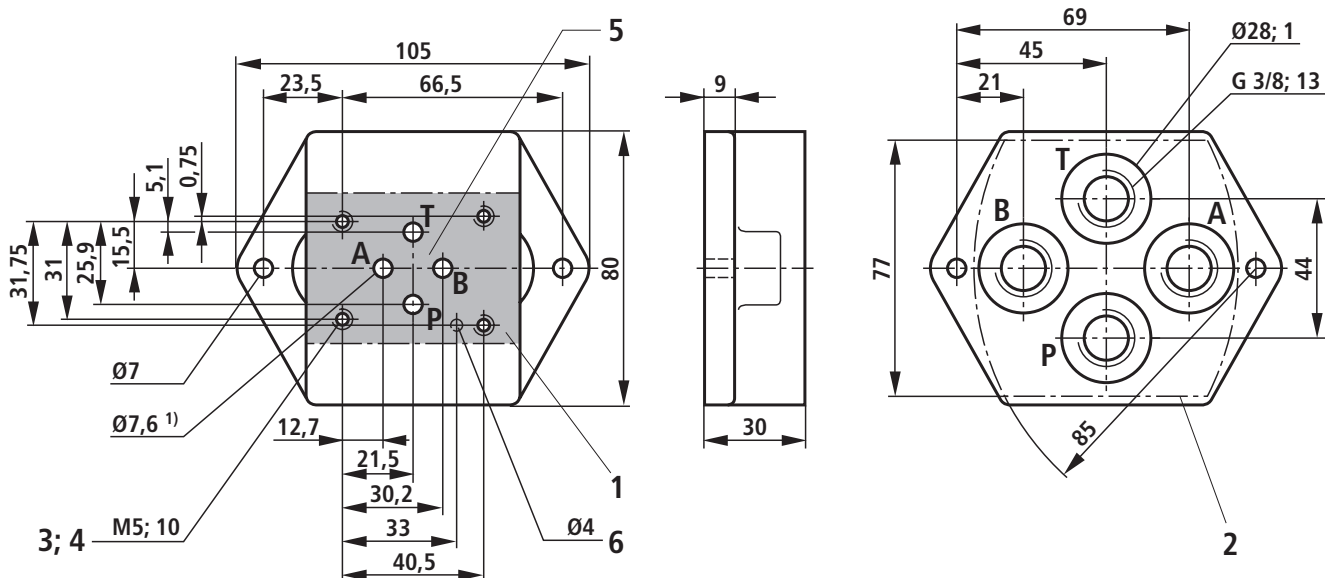
Item explanation see page 3



Type	Material no.	Weight in kg
G 341/01	R900424447	0.6

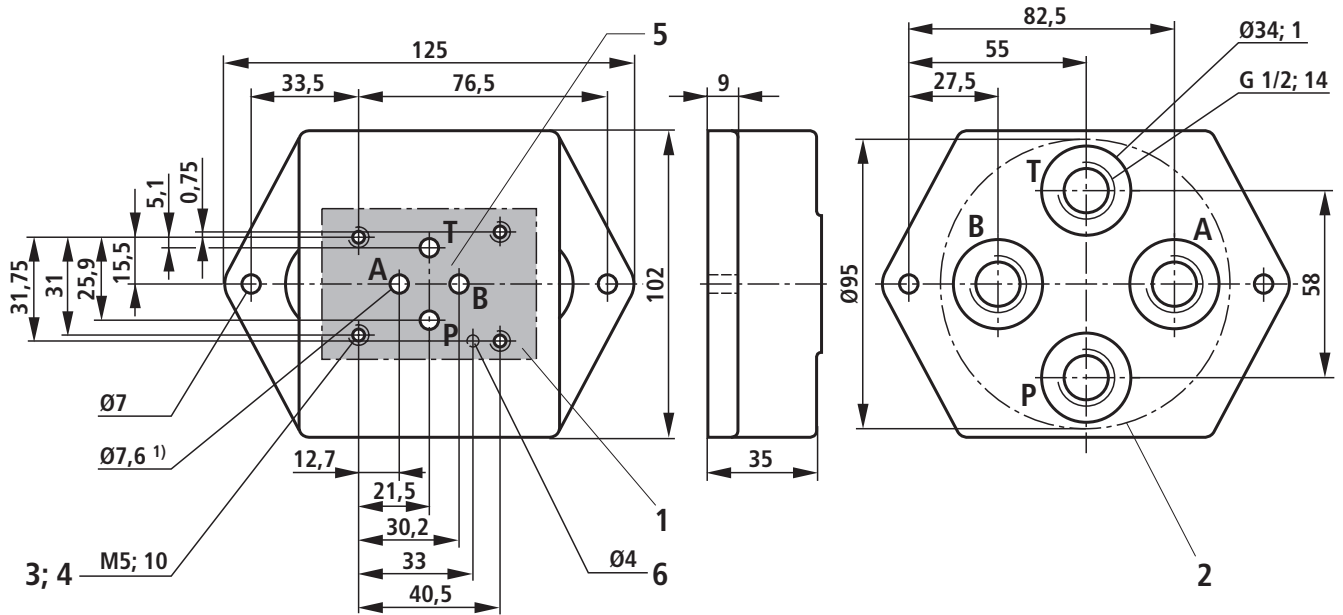
Type G 342/01, G 342/60 (G3/8) (nominal dimensions in mm)

Item explanation see page 3



Type	Material no.	Weight in kg
G 342/01	R900424448	1.1

Type G 502/01, G 502/60 (G1/2) (nominal dimensions in mm)



Type	Material no.	Weight in kg
G 502/01	R900455110	1.9

- 1 Valve mounting face
- 2 Front panel break-through
- 3 Valve mounting bores
- 4 Valve mounting screws
4 hexagon socket head cap screws ISO 4762 - M5 - 10.9
(separate order)
- 5 **without** locating hole according to DIN 24 340 form A
(ordering code: e.g. G 341/01)
- 6 **with** locating hole according to ISO 4401 and
CETOP-RP 121 H (ordering code: e.g. G 341/60)

Note on the valve mounting screws:

Length and tightening torque of the valve mounting screws depend on the valve types and the sandwich plates that might be provided.

¹⁾ Maximum dimension

Notes

Bosch Rexroth AG
Hydraulics
Zum Eisengießer 1
97816 Lohr am Main, Germany
Phone +49 (0) 93 52 / 18-0
Fax +49 (0) 93 52 / 18-23 58
documentation@boschrexroth.de
www.boschrexroth.de

© This document, as well as the data, specifications and other information set forth in it, are the exclusive property of Bosch Rexroth AG. It may not be reproduced or given to third parties without its consent. The data specified above only serve to describe the product. No statements concerning a certain condition or suitability for a certain application can be derived from our information. The information given does not release the user from the obligation of own judgment and verification. It must be remembered that our products are subject to a natural process of wear and aging.