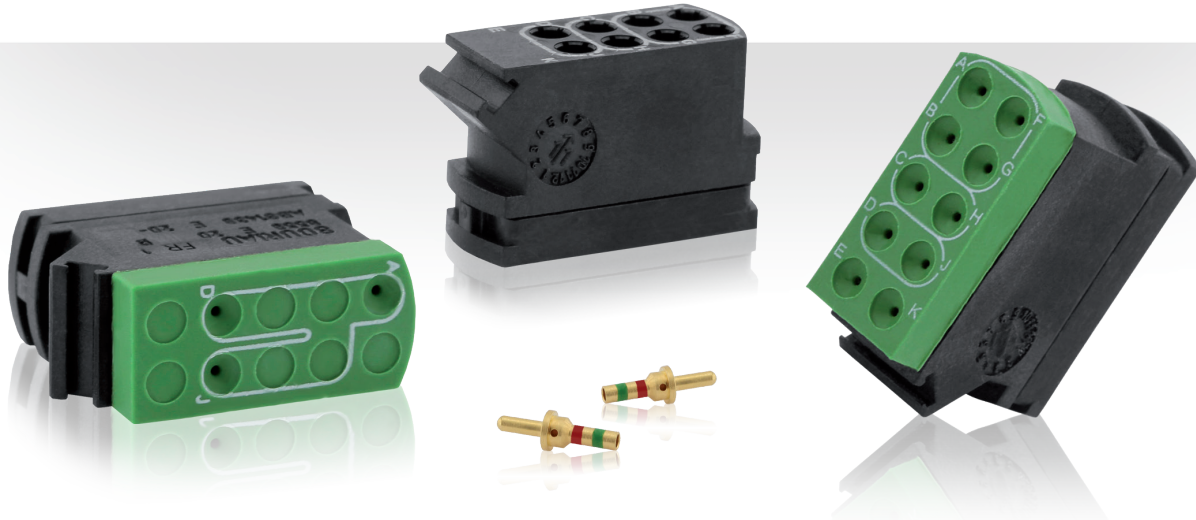


8559 Series Modular Junction Blocks



Interconnect Technology for Airframes

Building interconnection combinations of variable and transformable composition under a compact size.

Versatility ■ Contacts: size 22 or 20.
Sealed and unsealed version.

RoHS compliant ■ Many layouts available.

Easy to install ■ Termination modules are easily installed on a mounting rail.

Flight proven ■ Used on major airframer programs.

Standards ■ NSA937901 qualified.
Developed in accordance with EN3708.

Integrated components ■ Two new modules #20: layouts 12 & 13.
Use some features of CAN bus technology.

Description

- Two types of modules
- Contacts: size 22 or 20
- Sealed and unsealed version
- Standards: NSA937901 qualified
- Developed in accordance with EN3708



Technical features

Mechanical

- **Module:**
thermoplastic
- **Grommet:**
silicone elastomer (for sealed version)
- **Module clamp:**
stainless steel
- **Contact:**
copper alloy
- **Contact plating:**
gold over nickel
- **Vibration:**
to EN3708 - 10 to 2000 Hz - 10 g
- **Shock:**
to EN3708 - 100g peak during 6 m/s
- **Contact retention:**
size 22 - 40 N
size 20 - 67 N

Electrical

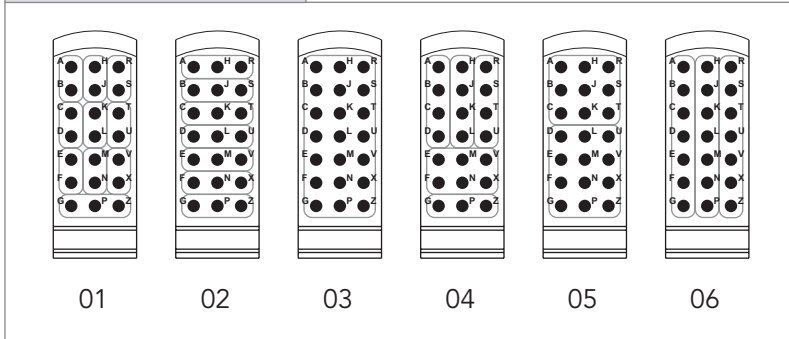
- **Test voltage:**
1500 Vrms (all layouts, except 12 & 13)
750 Vrms (layouts 12 & 13 only)
- **Contact resistance:**
size 22 - 5 mΩ
size 20 - 4 mΩ
- **Insulation resistance:**
≥ 5000 MΩ (under 500 Vdc)
- **Working current per contact:**
size 22 - 5 A
size 20 - 7.5 A

Environmental

- **Temperature range:**
-55°C +175°C (all layouts, except 12 & 13)
-55°C +125°C (layouts 12 & 13 only)
- **Damp heat:**
to EN3708 - 21 days
- **Salt spray:**
48 hours
- **Resistance to fluids:**
JP5
Skydrol 500 B4
Skydrol LD 4
MIL-PRF-7870C
MIL-PRF-23699F
AMS 1424

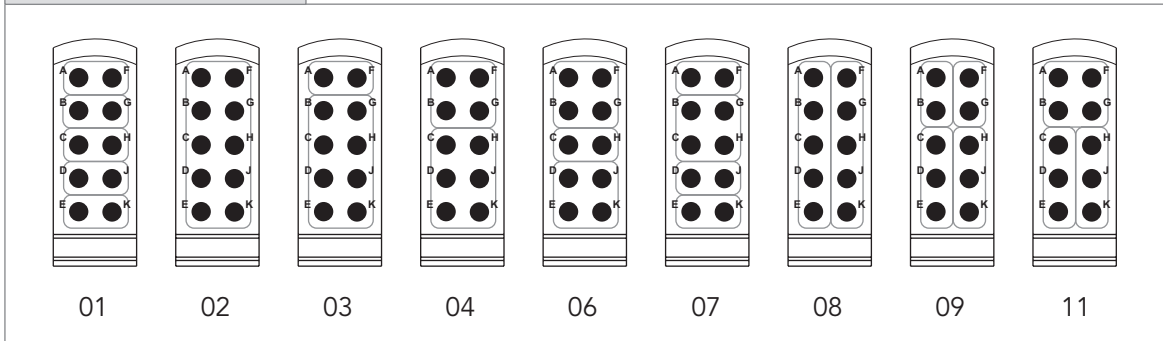
Contact layouts

Contact #22



Note: Module delivered without contact. Contact #22 Part Number: EN3155016M2222.

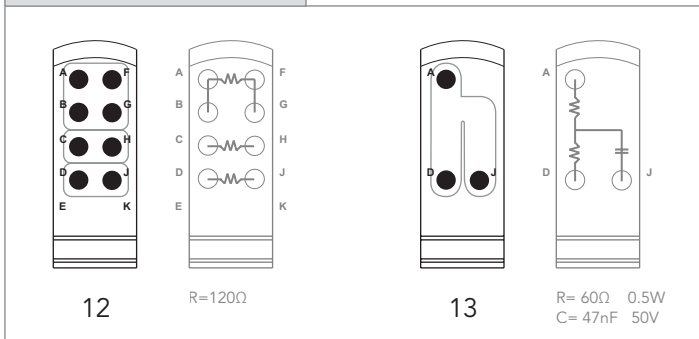
Contact #20



Note: Module delivered without contact. Contact #20 Part Number: EN3155016M2018.

Module with integrated components

Contact #20



Note: Module delivered with contacts. For other electrical layouts, please consult us.

Ordering information

Module part numbers

Basic Series	8559	N	20	01	B
Class:					
N: unsealed module (not available for layout 13)					
E: sealed module					
Module type:					
22: size 22 contact					
20: size 20 contact					
Contact layouts:					
see tables next page					
Last version:					
B					

Dimensions

Module & Module clamp

Module

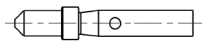
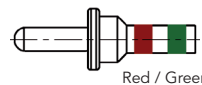
A Max.	Unsealed module	Sealed module	
		All layouts, except layout 13	Layout 13
	19 mm	20 mm	22 mm

Module clamp

Part Number: **8559 S**

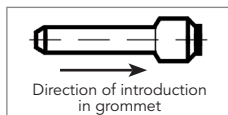
Note: All dimensions are in millimeters (mm)

Contacts

Contact size	Part Numbers	Admissible wire section		Ø over insulator (mm)		Profile
		mm ²	AWG	Min	Max	
#22	EN3155 016 M 22 22	0.15 0.25 0.40	26 24 22	0.75	1.09	
#20 Only layouts 12 & 13	8559 0232			0.85	1.59	
#20 Except layouts 12 & 13	EN3155 016 M 20 18			0.25 0.40 0.60 1.00	24 22 20 18	0.85

Filler plugs

Contact size	Part numbers	Color
#22	8660-212	Black
#20	8522-389A	Red



Crimping tool

Contact size	Wire sizes		Crimping pliers	Locator
	mm ²	AWG		
#22	0.15 0.25 0.40	26 24 22	8476-01 (M22520/2-01)	8572-30A
#20 Only layouts 12 & 13				K-1554
#20 Except layouts 12 & 13			0.25 0.40 0.60 1.00	24 22 20 18

Insertion & extraction tool

Contact size	Part numbers	Color	
		Insertion	Extraction
#22	M81969.14.01 MS27534-22D	Green	White
#20	M81969.14.11 MS27534-20	Red	White

For further information contact us at technical.emear@souriau.com (Europe - Asia - Africa)
technical.americas@souriau.com (North America)
 or visit our web site www.souriau.com

Mouser Electronics

Authorized Distributor

Click to View Pricing, Inventory, Delivery & Lifecycle Information:

[Souriau:](#)

[8660-501](#) [8660-504](#)