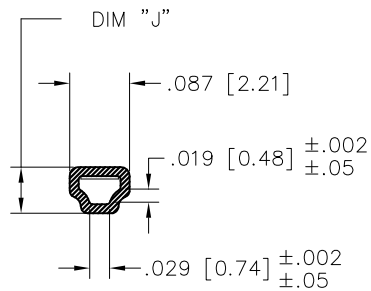
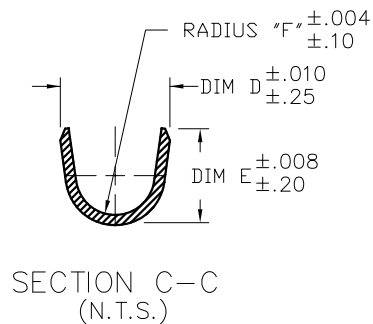
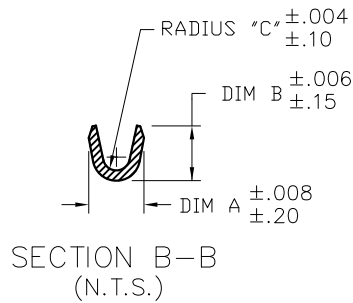


FCI
FCIconnect.com
Copyright FCI

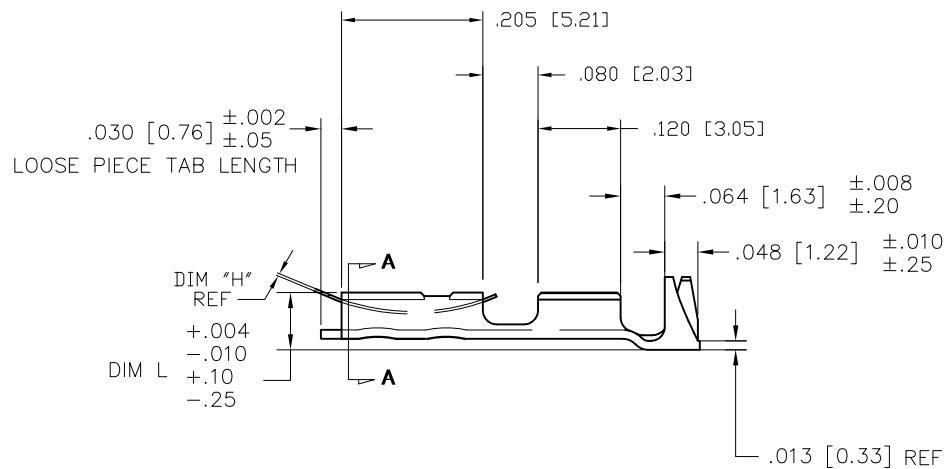
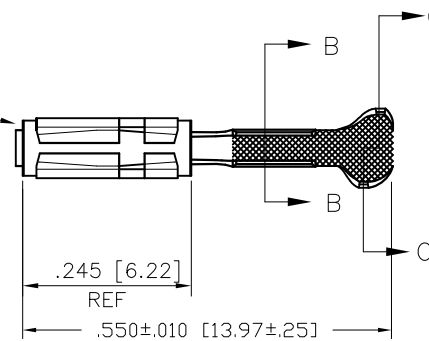
PRODUCT NUMBER
SEE TABLE





SECTION A-A



SIDES OF SPRING MAY NOT
EXTEND BEYOND SIDE OF
TERMINAL MORE THAN .004/.10



mat'l. code				surface		tolerance		projection		product family			
SEE TABLE				✓						PV TERMINALS			
ltr	ec'n no	dr	date	tolerances unless otherwise specified						title			
AA	V08-0113	HTB	2008-03-28	angles	linear	.XX±.01/.X±.3				MAXI PV™ RECEPTACLE CRIMP TO WIRE			
AB	V08-0510	HTB	2008-12-02			XXX±.005/.XX±.13							
AC	V11-0038	HTB	2011-10-11			XXXX±.0020/.XXX±.051							
—	—	—	dr	T. BREWBAKER		2006-04-18			dwg no		sheet 1 of 3	size	
W	V06-0218	HTB	2006-03-07	engr T. BREWBAKER		2006-04-18			46220		A3		
X	V06-0303	HTB	2006-04-18	chr T. BREWBAKER		2006-04-18							
Y	V07-0218	HTB	2007-03-16	appd T. BREWBAKER		2006-04-18			type		Product	Customer	Drawing
sheet index	revision	AC	AC	AC									
	sheet	1	2	3									



FCIconnect.com

Copyright FCI

PRODUCT NUMBER		AWG RANGE	MATERIAL AND PLATING		SPRING THICKNESS		BODY					
REELED	LOOSE PC.				DIM H		DIM J		DIM L			
			BODY : 1/4 HD BRASS		SPRING : BE-CU HEAT TREATED		ENGLISH	METRIC	ENGLISH	METRIC	ENGLISH	METRIC
46220-000	46224-000		OBSOLETE									
46230-000	46234-000											
46240-000	46244-000											
46221-000LF	46225-000LF	18-20	40μ"/1.02μm MIN GOLD OVER		GOLD FLASH	0.0058	0.147	0.067	1.70	0.083	2.11	
46231-000LF	46235-000LF	22-26	50μ"/1.27μm MIN NICKLE IN			0.0058	0.147	0.067	1.70	0.083	2.11	
46241-000	46245-000	28-32	OBS. CONTACT AREA (NOTE 4)			OBSOLETE						
46222-000LF	47418-000LF		OBSOLETE									
46232-000LF	47419-000LF											
46242-000	47420-000											
46223-000LF	47387-000LF		OBSOLETE									
46233-000LF	47384-000LF											
46243-000	47403-000											
46226-000LF	46227-000LF	18-20	40μ"/1.02μm MIN GOLD OVER		GOLD FLASH	0.0048	0.122	0.067	1.70	0.083	2.11	
46236-000LF	46237-000LF	22-26	50μ"/1.27μm MIN NICKLE IN			0.0048	0.122	0.067	1.70	0.083	2.11	
46246-000	46247-000	28-32	OBS. CONTACT AREA (NOTE 4)			OBSOLETE						
46228-000	46229-000		OBSOLETE									
46238-000	46239-000											
46248-000	46249-000											
46580-000	46581-000											
46590-000	46591-000											
46600-000	46601-000											
47388-000	47391-000											
47389-000	47392-000											
47390-000	47393-000											
47612-000												
47613-000												
47614-000												
47621-000												
47622-000												
47653-000												
47733-000												
47734-000												
47735-000												
47736-000	46582-000											
47737-000	46592-000											
47738-000	46602-000											
48188-000	48189-000											

SEE SHEET 3 FOR PRODUCTS WITH LEAD-FREE TIN PLATING.

mat'l. code SEE TABLE				surface <input checked="" type="checkbox"/>		tolerance		projection		product family PV TERMINALS		
ltr	ec'n no	dr	date	tolerances unless otherwise specified				 INCH/MM scale 1:1		title MAXI PV™ RECEPTACLE CRIMP TO WIRE		
AC				angles	linear	.XX±.01/.X±.3				sheet 2 of 3		size
						.XXX±.005/.XX±.13				A3		
						.XXXX±.0020/.XXX±.051				dwg no 46220		
				dr	T. BREWBAKER	2006-04-18				type		Product Customer Drawing
				engr	T. BREWBAKER	2006-04-18						
				chr	T. BREWBAKER	2006-04-18						
				appd	T. BREWBAKER	2006-04-18						
sheet index	revision sheet											

PRODUCT NUMBER		AWG RANGE	MATERIAL AND PLATING		SPRING THICKNESS		BODY					
REELED	LOOSE PC.				DIM H		DIM J		DIM L			
ENGLISH	METRIC		BODY : 1/4 HD BRASS		SPRING : BE-CU HEAT TREATED		ENGLISH	METRIC	ENGLISH	METRIC	ENGLISH	METRIC
46580-000LF	46581-000LF		OBSOLETE									
46590-000LF	46591-000LF											
46600-000LF	46601-000LF											
47388-000LF	47391-000LF	18-20	HOT DIPPED TIN (NOTE 7)	TIN PLATED	0.0058	0.147	0.067	1.70	0.083	2.11		
47389-000LF	47392-000LF	22-26			0.0058	0.147	0.067	1.70	0.083	2.11		
47390-000LF	47393-000LF	28-32			0.0058	0.147	0.067	1.70	0.083	2.11		
47736-000LF	46582-000LF	18-20	HOT DIPPED TIN (NOTE 7)	TIN PLATED	0.0048	0.122	0.067	1.70	0.083	2.11		
47737-000LF	46592-000LF	22-26			0.0048	0.122	0.067	1.70	0.083	2.11		
47738-000LF	46602-000LF	28-32			0.0048	0.122	0.067	1.70	0.083	2.11		

AWG RANGE	WIRE BARREL						INSULATION BARREL									
	DIM A		DIM B		DIM C		INSULATION DIA. RANGE FOR DISCRETE TERMINALS		INSULATION DIA. RANGE WHEN USED WITH MAXI LATCH HSG.		DIM D		DIM E		DIM F	
	ENGLISH	METRIC	ENGLISH	METRIC	ENGLISH	METRIC	ENGLISH	METRIC	ENGLISH	METRIC	ENGLISH	METRIC	ENGLISH	METRIC	ENGLISH	METRIC
18-20	0.110	2.79	0.110	2.79	0.021	0.53	0.042 - 0.103	1.07 - 2.62	0.042 - 0.060	1.07 - 1.52	0.139	3.53	0.123	3.12	0.050	1.27
22-26	0.070	1.78	0.070	1.78	0.017	0.43	0.036 - 0.103	0.91 - 2.62	0.036 - 0.060	0.91 - 1.52	0.139	3.53	0.123	3.12	0.050	1.27
28-30	0.054	1.37	0.058	1.47	0.011	0.28	0.028 - 0.054	0.71 - 1.37	0.028 - 0.054	0.71 - 1.37	0.115	2.92	0.110	2.79	0.040	1.02

NOTES:

- FOR DIMENSIONS OF WIRE BARREL AND INSULATION BARREL SEE TABLE.
- PART TO MATE WITH $.025 \pm .002$ $[0.64 \pm 0.05]$ SQ. PIN.
- APPLICABLE SPECIFICATIONS:
 - BUS-12-096 : PRODUCT SPECIFICATION
 - TA-213 : CRIMP SPECIFICATION FOR TERMINALS USED WITH MAXI-LATCH HOUSINGS.
 - TA-356 : CRIMP SPECIFICATION FOR CONTACTS NOT USED IN HOUSINGS.
- FINISH TO BE AS SPECIFIED IN CONTACT AREA. REMAINDER OF TOP OF PART TO BE GOLD FLASH OVER $50\mu"/1.27\mu\text{m}$ NICKEL. BACKSIDE OF TERMINALS PLATED WITH $30\mu"/0.76\mu\text{m}$ NICKEL ONLY.
- PRODUCT MEETS EUROPEAN UNION DIRECTIVES AND OTHER COUNTRY REGULATIONS AS DESCRIBED IN GS-22-008.
- THIS PRODUCT IS NOT INTENDED TO BE EXPOSED TO MANUFACTURING SOLDER PROCESSES.
- THIS PRODUCT HAS 100% TIN PLATING IN THE INTERFACE AND HAS NOT BEEN TESTED FOR WHISKER GROWTH IN ALL INTERCONNECT ENVIRONMENTS.

mat'l. code SEE TABLE				surface <input checked="" type="checkbox"/>		tolerance		projection		product family PV TERMINALS	
ltr	ecn no	dr	date	tolerances unless otherwise specified						title	
AC				angles	linear	.XX±.01/.X±.3 .XXX±.005/.XX±.13 .XXXX±.0020/.XXX±.051		INCH/MM		MAXI PV™ RECEPTACLE CRIMP TO WIRE	
								scale 1:1		dwg no	
				dr	T. BREWBAKER	2006-04-18				sheet 3 of 3	
				engr	T. BREWBAKER	2006-04-18				size	
				chr	T. BREWBAKER	2006-04-18				A3	
				appd	T. BREWBAKER	2006-04-18				type	
sheet	revision									Product Customer Drawing	
index	sheet										

Mouser Electronics

Authorized Distributor

Click to View Pricing, Inventory, Delivery & Lifecycle Information:

[FCI / Amphenol:](#)

[46227-000LF](#) [46231-000LF](#) [46236-000LF](#)