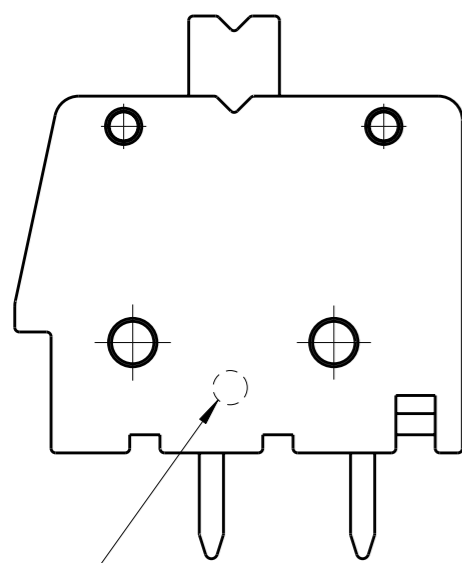
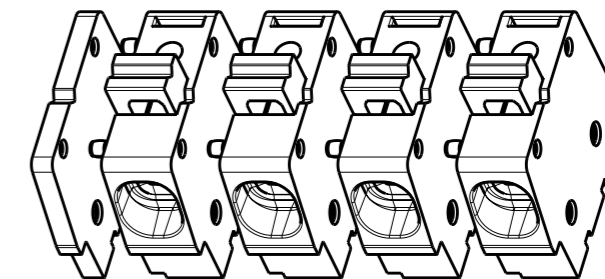
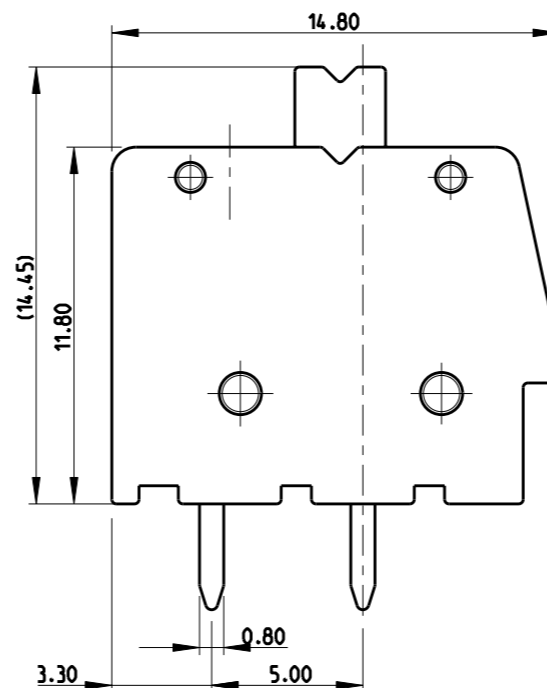
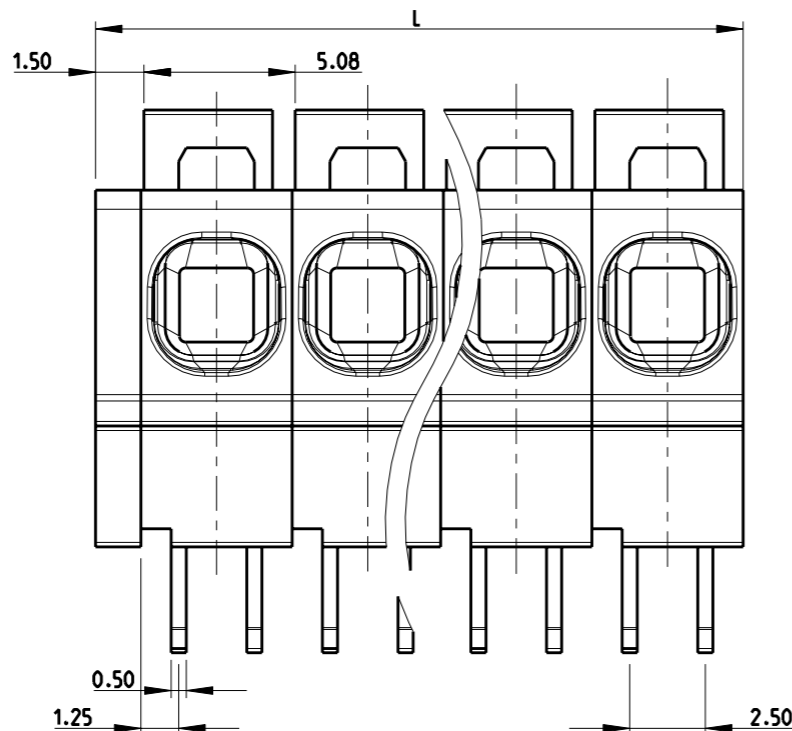


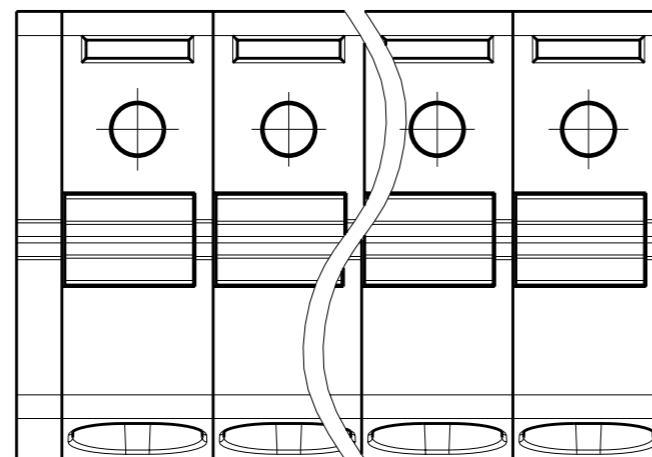
| P | LTR | DESCRIPTION | DATE | DWN | APVD |
|---|-----|---------------------------|---------|-----|------|
| | A | REVISED PER ECO-12-002880 | 14FEB12 | KH | MS |



Identificazione passo imperiale



SCALE 2:1
-4 AS SHOWN



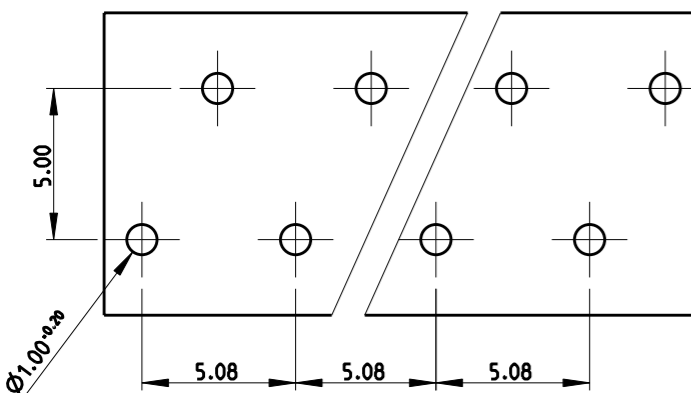
MATERIALS:
 HOUSING-POLYAMIDE, COLOR-GREEN
 CLAMPING SPRING-STEEL
 PIN-COPPER ALLOY-TIN PLATED

MECHANICAL
 PCB THICKNESS-2.40 MAX
 PCB HOLE DIAMETER-1.20 MIN
 STRIP LENGTH- 10-11 MM
 OPERATING TEMPERATURE--40 °C TO +110 °C

ELECTRICAL
 WIRE RANGE- 30 TO 12 AWG
 VOLTAGE RATING- 300 VOLTS
 CURRENT RATING-16 AMP
 CONTACT RESISTANCE-15 MILLOHM MAX
 INSULATION RESISTANCE-10⁹ OHMS MIN (500V DC)

| | | |
|--------|----|-------------|
| 128.50 | 25 | 2-1986712-5 |
| 123.42 | 24 | 2-1986712-4 |
| 118.34 | 23 | 2-1986712-3 |
| 113.26 | 22 | 2-1986712-2 |
| 108.18 | 21 | 2-1986712-1 |
| 103.10 | 20 | 2-1986712-0 |
| 98.02 | 19 | 1-1986712-9 |
| 92.94 | 18 | 1-1986712-8 |
| 87.86 | 17 | 1-1986712-7 |
| 82.78 | 16 | 1-1986712-6 |
| 77.70 | 15 | 1-1986712-5 |
| 72.62 | 14 | 1-1986712-4 |
| 67.54 | 13 | 1-1986712-3 |
| 62.46 | 12 | 1-1986712-2 |
| 57.38 | 11 | 1-1986712-1 |
| 52.30 | 10 | 1-1986712-0 |
| 47.22 | 9 | 1986712-9 |
| 42.14 | 8 | 1986712-8 |
| 37.06 | 7 | 1986712-7 |
| 31.98 | 6 | 1986712-6 |
| 26.90 | 5 | 1986712-5 |
| 21.82 | 4 | 1986712-4 |
| 16.74 | 3 | 1986712-3 |
| 11.66 | 2 | 1986712-2 |

PCB LAYOUT



| | | | | |
|--|--|------------------|---------------------------------------|-------------------------------|
| THIS DRAWING IS A CONTROLLED DOCUMENT. | | DWN | 08AUG2011 | STE TE Connectivity |
| | | CHK | 08AUG2011 | |
| | | APVD | 08AUG2011 | |
| | | NAME | SARVER, MICHAEL | |
| DIMENSIONS: | | PRODUCT SPEC | SPRING TYPE, SIDE WIRE ENTRY TERMINAL | |
| mm | | APPLICATION SPEC | SIDE STACKABLE STRAIGHT | |
| TOLERANCES UNLESS OTHERWISE SPECIFIED: | | WEIGHT | 02 - 25 POLES PITCH 5.08mm | |
| 0 PLC ±0.5 | | | SIZE | RESTRICTED TO |
| 1 PLC ±0.25 | | | A3 | |
| 2 PLC ± | | | CAGE CODE | |
| 3 PLC ± | | | 00779 | |
| 4 PLC ± | | | DRAWING NO | |
| ANGLES ±1° | | | C-1986712 | |
| MATERIAL - | | | SCALE | |
| FINISH - | | | 2:1 | |
| | | | SHEET | |
| | | | 1 | |
| | | | OF | |
| | | | 1 | |
| | | | REV | |
| | | | A | |
| | | | | |

Mouser Electronics

Authorized Distributor

Click to View Pricing, Inventory, Delivery & Lifecycle Information:

[TE Connectivity:](#)

[1-1986712-2](#)