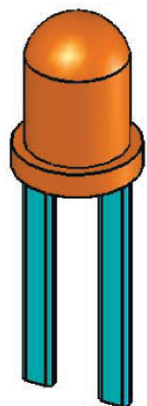
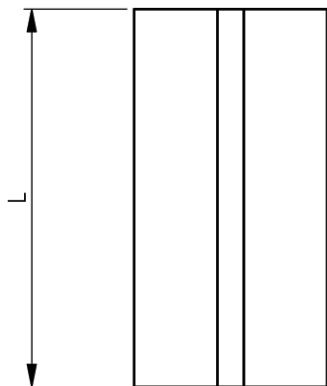
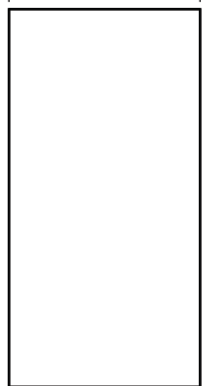
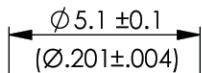
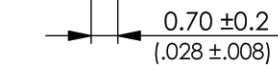
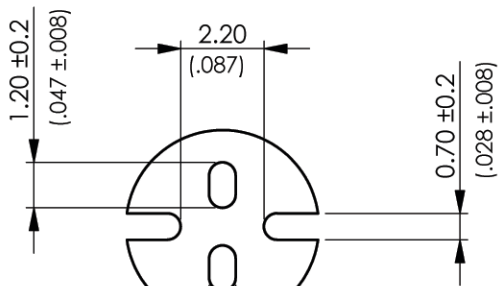
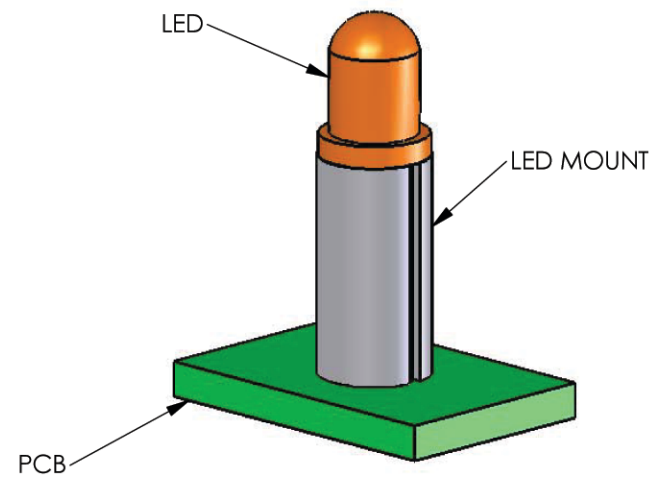


AVAILABLE BY SPECIAL ORDER- NAFTA REGION ONLY



REV.	MODIFICATION.	DATE	DRN
01	NEW DWG	25/05/01	JPM
02	SCN04-093	23/09/04	OW
03	SCN04-096	01/10/04	OW
04	SCN04-100	14/10/04	OW
05	ECN05-021	26/01/05	OW
06	ECR05-096	31/08/05	OW



TYPICAL APPLICATION VIEW

INFORMATION CONTAINED IN THIS DOCUMENT IS CONFIDENTIAL TO RICHCO INTERNATIONAL Co. Ltd. AND MAY NOT BE DISCLOSED OR REPRODUCED IN WHOLE OR PART WITHOUT THEIR WRITTEN CONSENT

Richco

METRIC GENERAL TOLERANCES ±0.25 ARE PRIMARY UNLESS OTHERWISE STATED
 1 DECIMAL PLACE ±
 2 DECIMAL PLACES ±
 ANGULAR ±1°

IMPERIAL GENERAL TOLERANCES ±0.010 ARE FOR REFERENCE UNLESS OTHERWISE STATED
 1 DECIMAL PLACE ±
 2 DECIMAL PLACES ±
 ANGULAR ±1°

- NOTES:
 1) FOR USE WITH 5mm , T-1 3/4 LEDS.
 2) ALL PRIMARY DIMENSIONS IN mm,
 SECONDARY DIMENSIONS IN INCHES.

MATERIAL: PVC UL94 V-0 (RMS-176)		COLOUR: BLACK	
TITLE: LED MOUNTS		PART No: LEDM-1-XX	
DRG No: 786-9022	NPR REF: N/A	SIZE A4	
DRN OW	DATE 14/10/04		
SCALE NTS		SHEET No 1 OF 1	

PART No.	LENGTH
LEDM-1-02 - LEDM-1-30	2.0mm - 30mm

Mouser Electronics

Authorized Distributor

Click to View Pricing, Inventory, Delivery & Lifecycle Information:

[Essentra:](#)

[LEDM-1-13](#) [LEDM-1-06](#) [LEDM-1-03](#) [LEDM-1-09](#) [LEDM-1-02](#) [LEDM-1-04](#) [LEDM-1-08](#) [LEDM-1-10](#) [LEDM-1-21](#)