

# BoPad

Desktop enclosure, IP40 (IP65)



BOP 700 PH-9005

Order no.: 35170035

\* = Available on request.

## Characteristics

Colour of enclosure group  
Black, similar to RAL 9005

Colour of enclosure group  
Black

Protection class  
IP 40, 65

Enclosure Material  
Enclosures: ABS

Seal / impact protection: TPE

For details see technical information

## Scope of delivery

Lid and base, 4 screws, 4 rubber feet

## Note

Upgradable to IP65 with design seal BOP\_ DI.

## Important!

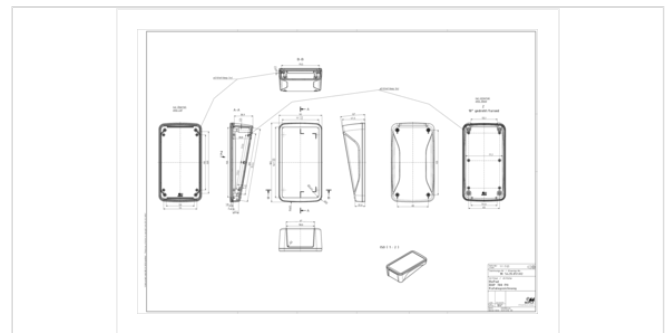
To compensate for pressure when temperatures change and cause moisture in the enclosure, we recommend that you use a pressure compensation element.

» Additional information

## Dimensions

Dimensions  
165 x 90 x 47.5 mm

## Product drawing



## Technical documentation / Downloads

---

### Technical drawings

3D product data in STEP format: Registration necessary

Drawing for mechanical processing: 35170035 BOP-700-PH-9005-G.dxf (1.5 MB)

Milling contours are shown here as a DXF file. (Sub D, USB, HDMI, cable glands, ...)

Product drawing in PDF format: 35170035 BOP-700-PH-9005.pdf (210.9 KB)

Product drawing in DXF format: 35170035 BOP-700-PH-9005.dxf (2.5 MB)

Drawing for max. PCB dimensions in PDF format: 35170035 BOP-700-PH-9005-pcb.pdf (172.9 KB)

Drawing for max. PCB dimensions in DXF format: 35170035 BOP-700-PH-9005-pcb.dxf (1.0 MB)

### Matching accessories

---



#### Design seal, IP65

35270005	BOP 700 DI-9005	Black
35270006	BOP 700 DI-9016	White
35270000	BOP 700 DI-5005	Signal blue
35270001	BOP 700 DI-3001	Signal red



#### Screw covers for enclosure screws

35007405	BOP-SA-9005	Black
----------	-------------	-------



#### Screws (SHR) and distance bolts (DIBLZ) for mounting bosses in plastic enclosures

59006190	SHR Z KA25x6	SD = 2.5 / ND = 2.0 / KD = 4.4
----------	--------------	--------------------------------