

Overview

Introduction

This is an RS232/485/422 device data acquirer/IoT gateway designed for an industrial environment. It combines multi functions in one, including serial server, Modbus gateway, MQTT gateway, RS232/485/422 to JSON, etc. Adopting RS232/485/422 and Ethernet interface with PoE function, it can be connected with screw terminals for power input by the power port (outer diameter: 5.5mm, inner diameter: 2.1mm). The rail-type case design, is small in size, easy to install, and cost-effective. It is very suitable for collecting the data of RS232/485/422 and sensors in the industrial field, including local network collection or uploading to the data that the cloud server autonomously collects and sends.

Parameter

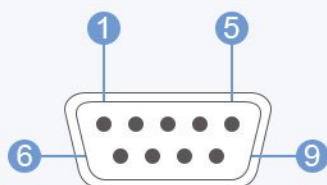


Model	RS232/485/422 TO POE ETH (B)
Product type	Serial server, Modbus gateway, MQTT gateway
Primary function	Realize the bidirectional transparent transmission function of RS232/485/422 to Ethernet
Communication interface	RS232/485/422 × 1, Ethernet port × 1
Power supply	Screw terminal DC 6~36V or PoE network port
Isolation protection	Power isolation, signal isolation protection
Communication interface	
Ethernet	PoE Ethernet port, support IEEE 802.3af standard
	10 / 100M self-adaptive RJ45 interface, 2KV surge protection
Serial port	Isolated RS232/485/422
Serial parameters	
Baud rate	300 ~ 115200 bps

Parity bit	none, odd parity, even parity, mark, space
Data bits	5 ~ 9 bits
Flow Control	no flow control
Software	
Protocol	ETHERNET, IP, TCP, UDP, HTTP, ARP, ICMP, DHCP, DNS
Configuration method	PC configuration, WEB browser, device management function library
Communication method	TCP/IP direct communication, virtual serial port mode
Operating mode	TCP server, TCP client (TCP server also coexist), UDP, UDP multicast
Other	
Operating temperature	-40°C ~ 85°C
Humidity range	5% ~ 95% relative humidity
Dimensions	L × W × H: 88.7 × 64.5 × 24.2 mm

Note: Only the model with the word "POE" supports the POE function.

Hardware Description



RS232 PINOUT	
DB9 Male (PIN)	RS232 PIN
2	(RXD)
3	(TXD)

RS232 Pinout Definition

5	GND
1, 4, 6, 7, 8, 9	N/C

Software Feature

- Support TCP server, TCP client, UDP mode, and UDP multicast. When used as a TCP client, it also supports TCP server functions. It supports 30 TCP connections as a TCP server and 7 destination IPs as a TCP client.
- The baud rate supports 1200~115200bps, the data bit supports 5~9 bits, and the parity bit can be in five ways: no parity, odd parity, even parity, mark, and space.
- Supports the function of sending MAC address on device connection, which is convenient for cloud management of devices.
- Provides a secondary development kit DLL development library for searching and configuring devices on the computer side.
- Support Web browser configuration, support DHCP to obtain IP dynamically, and DNS protocol to connect domain name server address.
- Support cloud remote search for devices, configure device parameters, and upgrade device programs.
- Support viewing the TCP connection status, and the data sending and receiving of the serial port. The virtual serial port also supports the monitoring function.

Advanced Software Function

- Support Modbus gateway function, support Modbus RTU to Modbus TCP. It can support storage-type Modbus, which can automatically collect and store device data; it also supports non-storage-mode Modbus gateways.
- Support multi-host function: In the query mode of one question and one answer, it supports the network port to allow multiple computers to access the same serial port device at the same time.
- Support MQTT gateway function.
- Support JSON to Modbus RTU and 645-meter protocol, support upload data in HTTP POST, HTTP GET format.
- Support NTP protocol to obtain network time, which is used for serial port output, and the latter is used for protocol content upload.
- Supports custom heartbeat package and registration package functions: it can facilitate communication with the cloud and device identification.
- Supports the function that TCP requires password authentication to establish a connection to ensure connection security.
- Support the data transmission and delivery function with http, and the cloud can directly use the GET command of http to communicate with the serial port of the device.

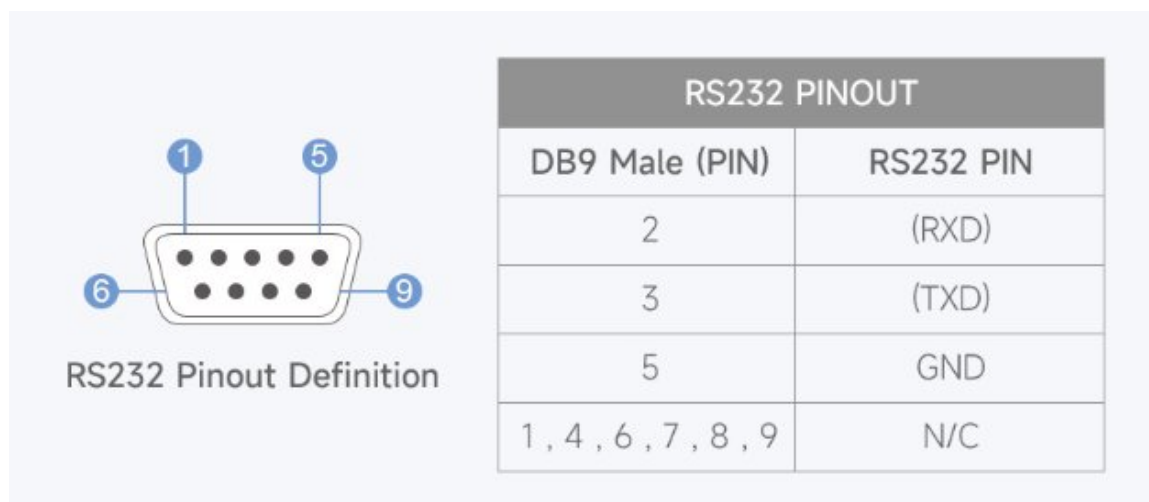
Application

- For connecting the device and the cloud terminal as the IoT gateway.
- Electricity, smart instruments, and energy consumption monitor.
- Remote monitoring and program download for various automation PLCs.
- Various configuration software and equipment communication interface.
- Networking of equipment in the field of access control and security.

Fast Test

Hardware Connection

- Generally, the serial server only needs to be connected to the power, serial port, and Ethernet cable. The power supply can adopt the 2-wire power supply, and can directly connect to the positive and negative terminals of the power supply. The serial port must be connected according to the user's serial devices. The Ethernet port can be connected to the normal Ethernet cable, can directly be connected to the computer, or connected to the network by a switch. RS232 can be directly connected by DB9 cable, RS485 must be connected by the positive pole to the TA, the negative pole to the TB, and then you can connect the TA and TB to the RA and RB of the device, the RA and RB of RS422 must be connected to the TA and TB of the device.
- RS232 pinout:



Software Installation

Vircom can be used to configure the parameters such as the device IP and create the virtual serial port. If there is no serial port function, you can download the non-installation config software.

- [VirCom en.rar](#)
- [Virtual-serial-port-control3.5.rar](#)

Driver installation needs to be decompressed, double-click the software to install, if the virtual serial port in Vircom is not displayed, restart and check again.

Examples

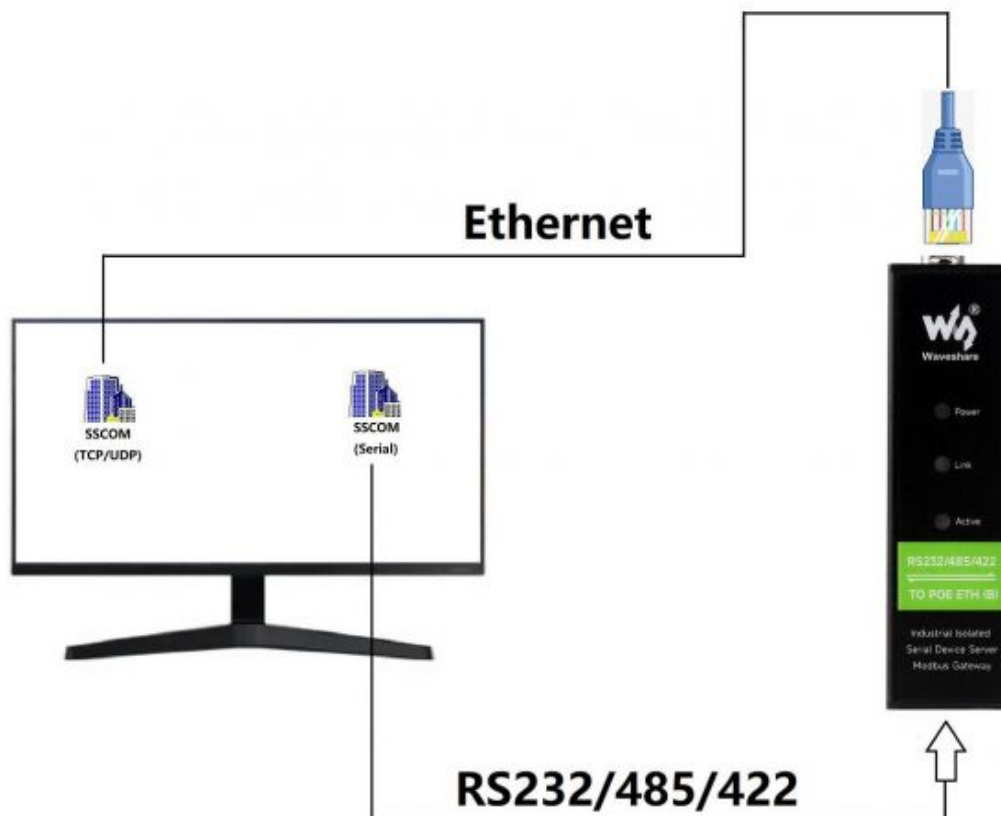
TCP Communication

Software Preparation

- [Vircom](#)
- [Sscom5.13.1.zip](#)

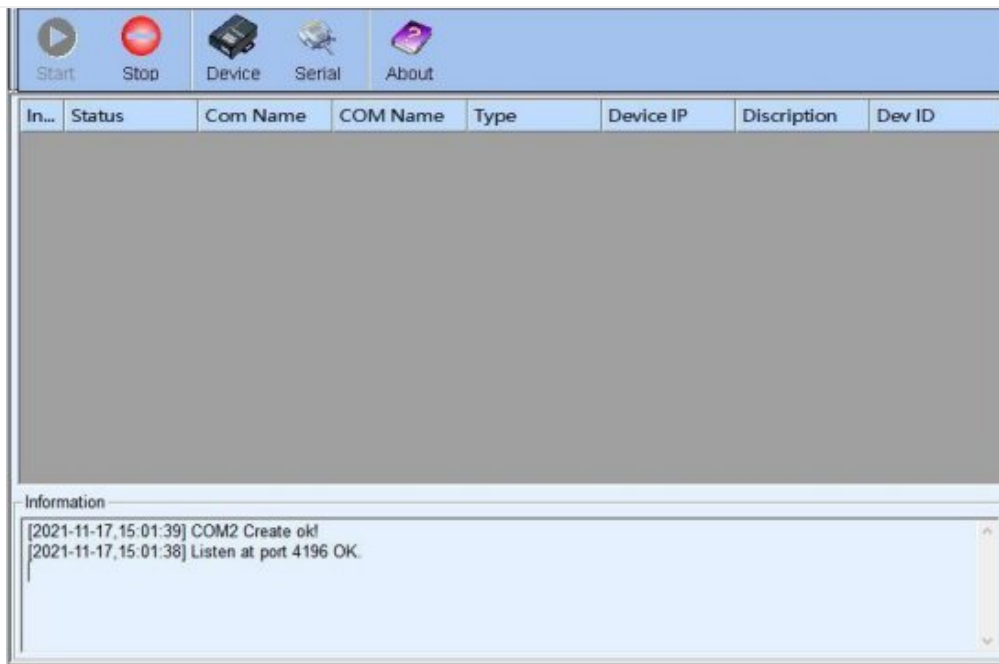
Steps

After the installation of Vircom and the hardware connection of the device is completed, run the software as shown in the figure, and then click "Device Management" as shown in the figure. It is very convenient to use Vircom to search and configure device parameters in different network segments, as long as the device and the computer running Vircom are under the same switch. The following tests also require USB TO RS 232/485/422 devices.

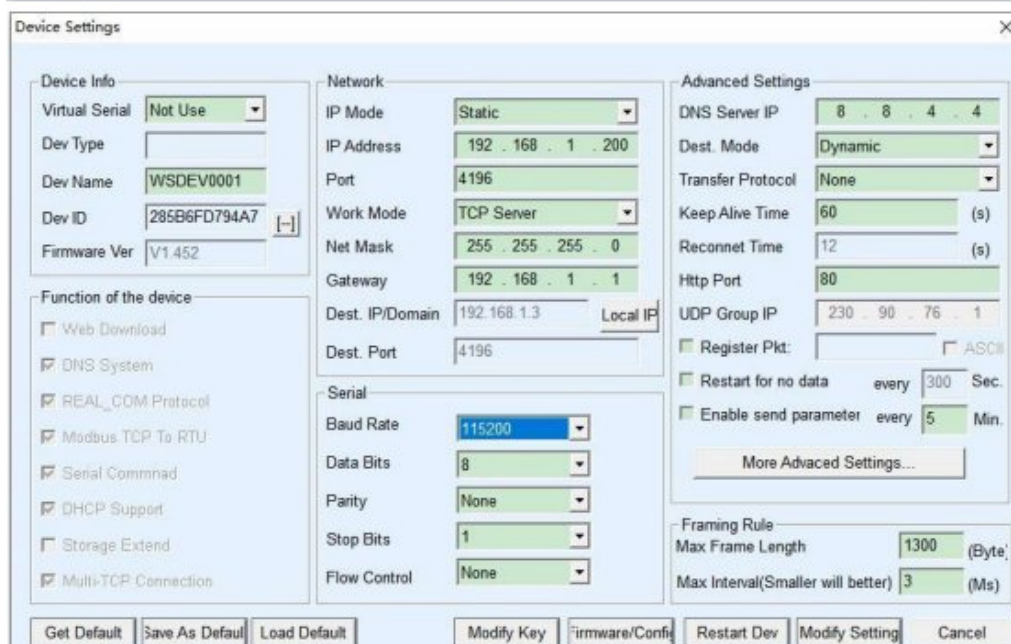
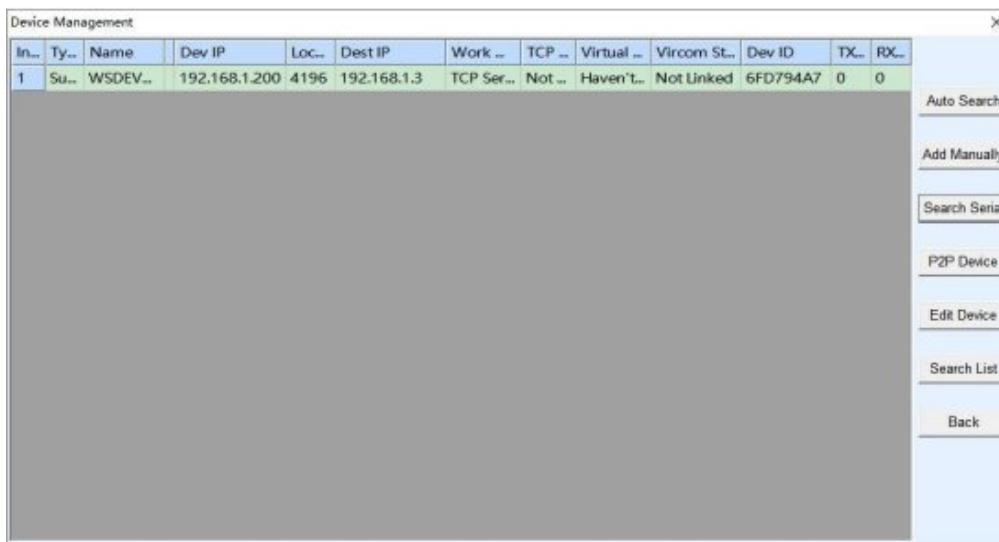


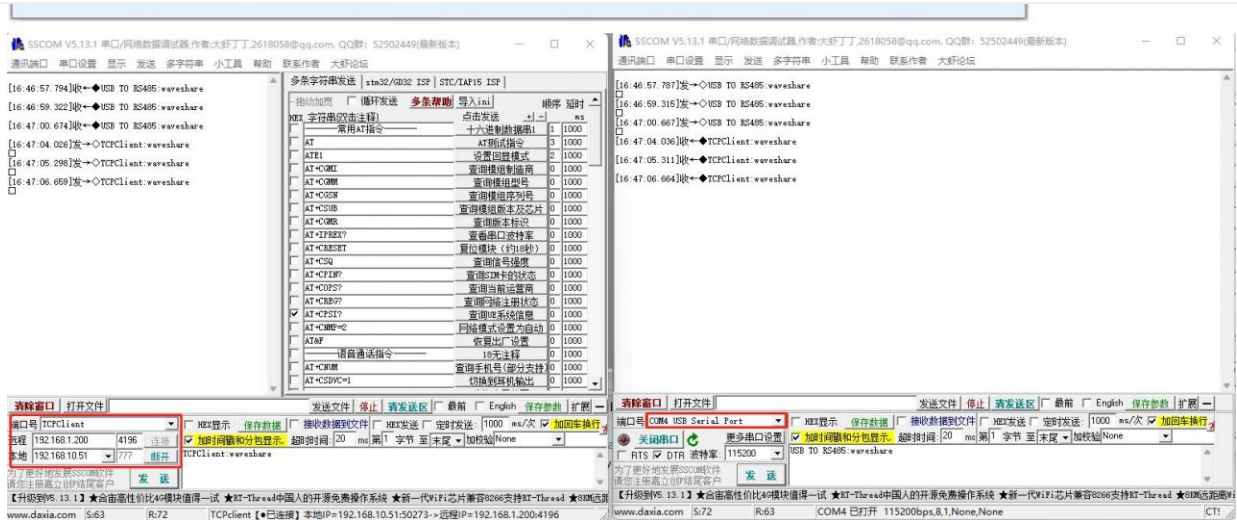
The serial port of the serial server to the Ethernet port, the Ethernet port to the serial port transparent transmission function. If the COM port of the PC (USB TO RS232/485/422) connects to the serial port of the serial server. You should open the SSSCOM and the corresponding COM port, as shown below:





In addition, you need to open another serial assistant window as the TCP client. Enter the target IP as the IP of the serial server (192.168.1.200), the target port 4196, and click "Open". As shown below:





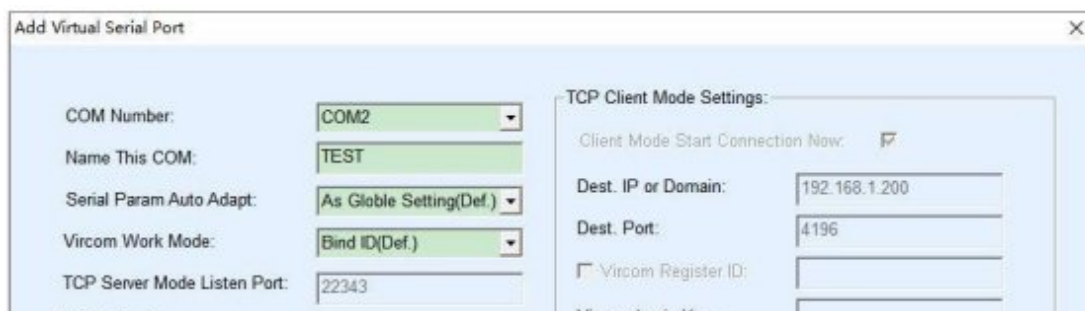
Enter "TCPClient: Waveshare Test" in the SSCOM2 set as TCPClient and click send, then the data will be transferred to the RS232/485/422 interface through the network port of the serial port server, and then sent to the USB TO RS232/485/422. Then it will be displayed in the serial port debugging assistant SSCOM1; conversely, input "USB TO RS232/485/422: Waveshare Test" in SSCOM1, and click Send to also send to SSCOM2, and it will be displayed.

Virtual Serial Port Test

SSCOM2 in the figure communicates directly with the serial port server through TCP. In order to enable the user's already developed serial port software to communicate with the serial port server, a virtual serial port needs to be added between the user program and the serial port server. As shown in the figure, Vircom and user programs run on one computer, and Vircom virtualizes a COM port, making this COM port correspond to the serial port server. When the user program opens the COM communication, it can be sent to the user's serial device through the Vircom serial server. The following demonstrates this operation step:

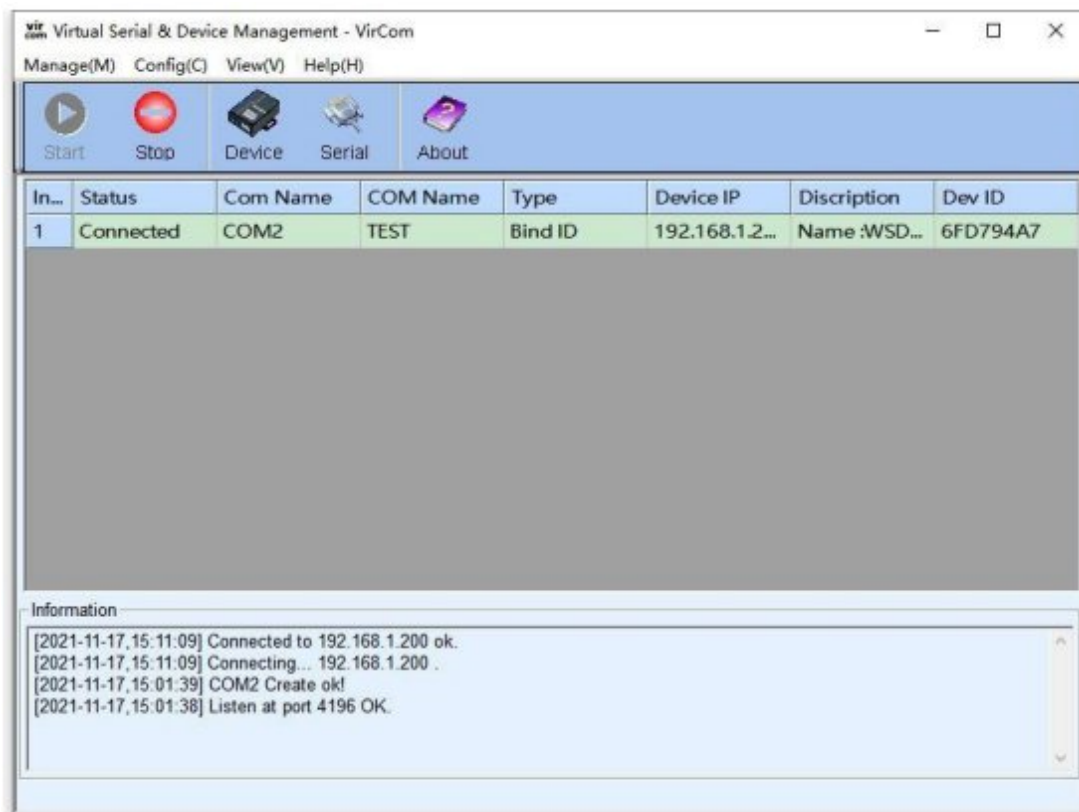


Click the "UART management" in the Vircom interface, click "add", and then choose COM2. Among them, COM5 is the COM port that did not exist in the computer.





Then enter the device management, and double-click the device that needs to be bound to COM2. As shown in the figure, select COM2 in the "Virtual Serial Port" list in the upper left corner. Then click "Modify Settings", click "Restart Device" and return to the main interface of Vircom. It can be seen that COM2 has been connected to the device whose IP is 192.168.1.200. In this case, COM2 can be used instead of SSCOM2 for communication.



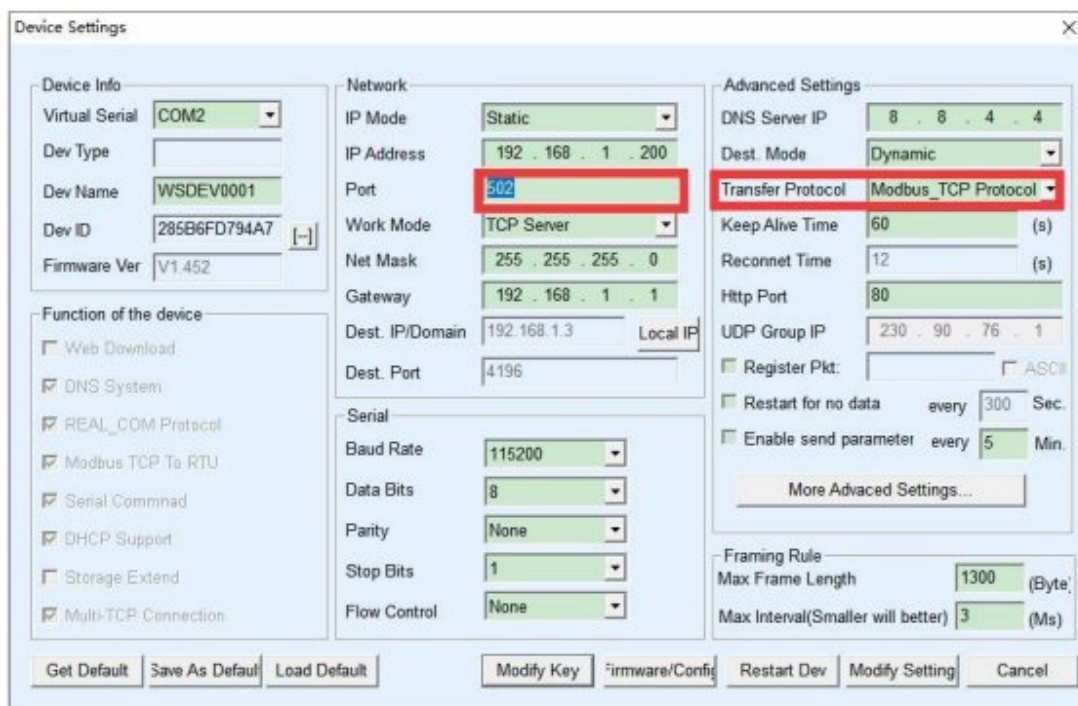
Open SSCOM to simulate the user's serial port program, open COM2 (the virtual serial port above), open another SSCOM to simulate a serial port device, and open COM3 (hardware serial port). At this time, the data link sent by COM2 is as follows: COM2 —>Vircom —>the network port of the serial server—>the serial port of the serial server —>COM3.

Conversely, COM3 to COM2 can also transmit data: COM3 -> the serial port of the serial server-> the network port of the serial server-> Vircom -> COM2. As shown in the figure below, both parties send and receive data. If COM4 is replaced with the user serial device, then COM5 can realize the communication with the user device.

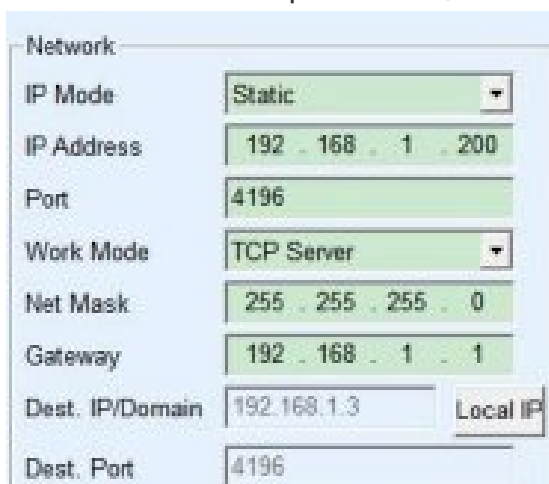
[RS485 TO ETH \(B\) Manual 105.jpg](#)

MODBUS TCP Test

By default, the data between the serial port and network port is transparently transmitted. If you need to convert Modbus TCP to RTU, you need to select the conversion protocol as "Modbus TCP<-->RTU" in the device settings dialog box, as shown in the figure below. At this time, the device port automatically changes to 502. At this time, the user's Modbus TCP tool is connected to the IP port 502 of the serial server and the sent Modbus TCP command will be converted into an RTU command and output from the serial port. For example, if the serial port server network port receives the Modbus TCP command of 00 00 00 00 00 0601 03 00 00 0a, the serial port outputs the command of 01 03 00 00 00 0a c5 cd. Note: The serial port may send multiple 01 03 00 00 00 0a c5 cd commands because the default Modbus adopts the storage mode, which will automatically train the query commands. How to switch to non-storage mode will be explained later.



If the user's Modbus TCP software is used as a slave station (Slave), it is necessary to select the conversion protocol, then change the working mode to the client, the destination IP to the IP of the computer where the Modbus TCP software is located, and the destination port to 502, as shown in the figure below show.



WEB Configuration

Using Vircom, you can search and configure device parameters in different network segments. For Web configuration, you must first ensure that the computer and the serial server are in the same IP segment, and you need to know the IP address of the serial server in advance. But web configuration can be done on any computer without Vircom.

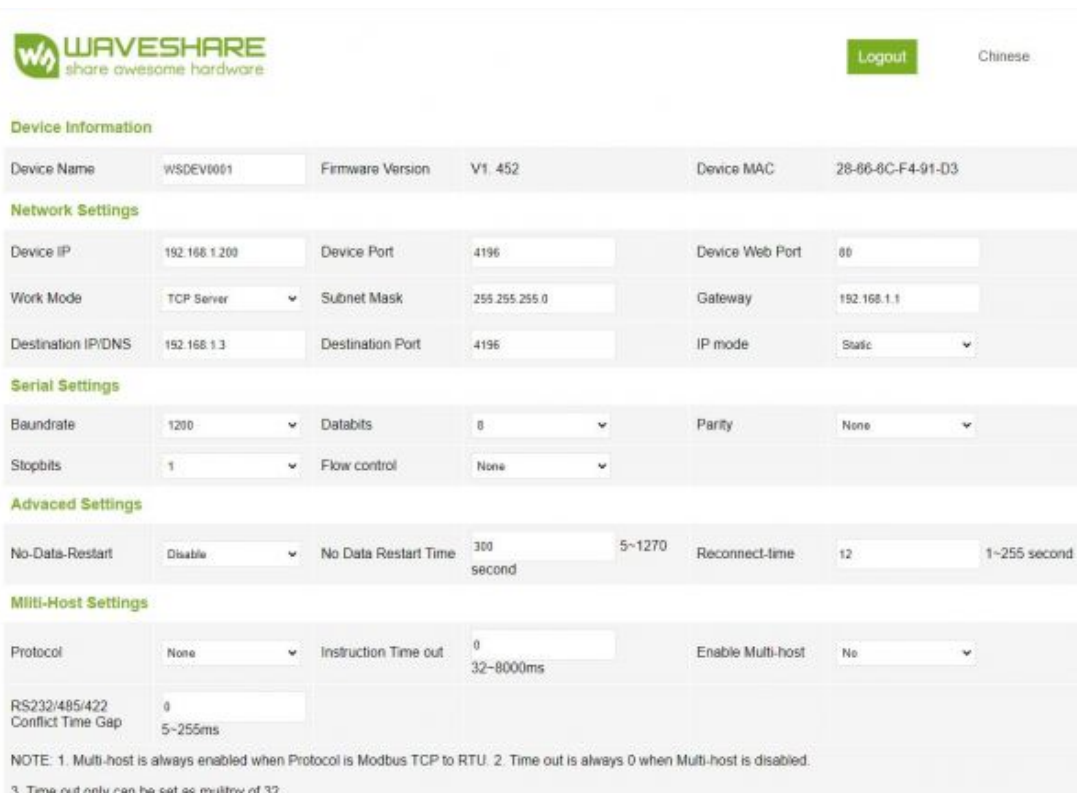
1. Enter the IP address of the serial server in the browser, such as <http://192.168.1.200>

RS232/485/422 TO POE ETH (B)



www.waveshare.com

2. Enter a password in Password: There is no login password set by default in the factory, you can enter a password at will, and click the Login button to log in. After setting the password to log in, the settings at "Modify webpage login password" will take effect:



WAVESHARE share awesome hardware Logout Chinese

Device Information

Device Name	WSDEV001	Firmware Version	V1.452	Device MAC	28-86-8C-F4-91-03
-------------	----------	------------------	--------	------------	-------------------

Network Settings

Device IP	192.168.1.200	Device Port	4196	Device Web Port	80
Work Mode	TCP Server	Subnet Mask	255.255.255.0	Gateway	192.168.1.1
Destination IP/DNS	192.168.1.3	Destination Port	4196	IP mode	Static

Serial Settings

Baudrate	1200	Databits	8	Parity	None
Stopbits	1	Flow control	None		

Advanced Settings

No-Data-Restart	Disable	No Data Restart Time	300 second	5~1270	Reconnect-time	12	1~255 second
-----------------	---------	----------------------	------------	--------	----------------	----	--------------

Multi-Host Settings

Protocol	None	Instruction Time out	0	Enable Multi-host	No
			32~8000ms		
RS232/485/422 Conflict Time Gap	0				
	5~255ms				

NOTE: 1. Multi-host is always enabled when Protocol is Modbus TCP to RTU. 2. Time out is always 0 when Multi-host is disabled. 3. Time out only can be set as multiply of 32.

Modify Web Login Key

New Key

Input Key Again

Submit

3. The serial server parameters can be modified on the web page that appears. For the relevant parameters, please refer to Table 4 for the meaning of the parameters.

4. After modifying the parameters, click the "Submit Modification" button.

Resource

Document

- [Waveshare MQTT and JSON Manual](#)

Software

- [Vircom](#)
- [virtual serial port control](#)
- [SSCOM](#)
- [TCPIP/UDP debug tool](#)
- [Modbus Slave](#)

Related Application

- [RS485 TO ETH \(B\) Connect Alibaba Cloud And EMQX](#)

Certificate

- [CE EMC](#)

FAQ

Question:What should I do if the RS232/485/422 TO ETH (B)LINK is yellow and cannot access the network?

Answer:

- Set a static IP, for example:

RS232/485/422TO ETH (B) is set to 192.168.1.200 port number 1111;

- The computer is set to 192.168.1.199, port number 1111;
- Tested with the TCP server shared by the Internet community: 120.79.100.197 port

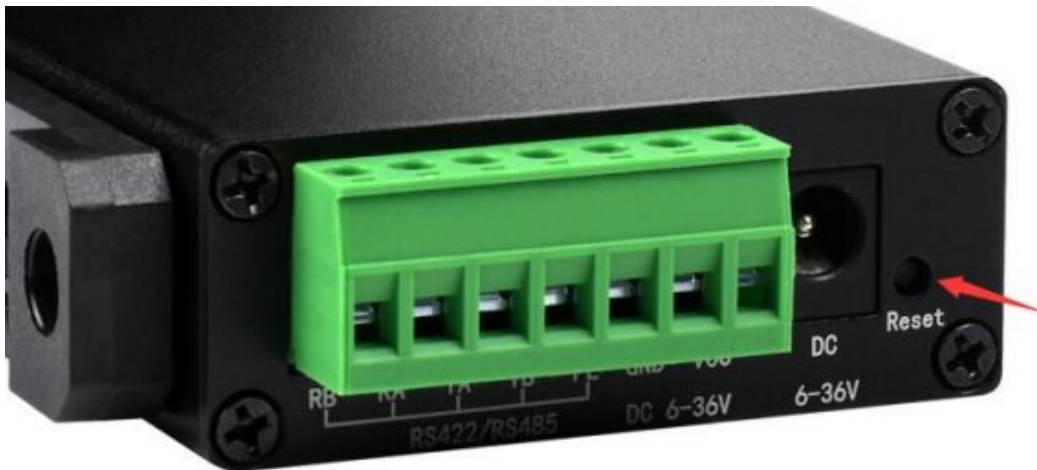
number 10002

If it still doesn't work, do a factory reset.

Question:How to restore factory settings for RS232/485/422 TO ETH (B)?

Answer:

1) Press the reset pin for 5 seconds.



2) Get the default parameter and modify the setting.

Device Settings

Device Info Virtual Serial: Not Use Dev Type: ZLSN2007 Dev Name: ZLDEV0001 Dev ID: 285FCAD56BAD Firmware Ver: V1.452	Network IP Mode: Static IP Address: 192 . 168 . 1 . 200 Port: 4196 Work Mode: TCP Server Net Mask: 255 . 255 . 255 . 0 Gateway: 192 . 168 . 1 . 1 Dest. IP/Domain: 192.168.1.3 Local IP Dest. Port: 4196	Advanced Settings DNS Server IP: 8 . 8 . 4 . 4 Dest. Mode: Dynamic Transfer Protocol: None Keep Alive Time: 60 (s) Reconnect Time: 12 (s) Http Port: 80 UDP Group IP: 230 . 90 . 76 . 1 <input type="checkbox"/> Register Pkt: <input type="checkbox"/> ASCII <input type="checkbox"/> Restart for no data every 300 Sec. <input type="checkbox"/> Enable send parameter every 5 Min. More Advanced Settings...
Function of the device <input type="checkbox"/> Web Download <input checked="" type="checkbox"/> DNS System <input checked="" type="checkbox"/> REAL_COM Protocol <input checked="" type="checkbox"/> Modbus TCP To RTU <input checked="" type="checkbox"/> Serial Command <input checked="" type="checkbox"/> DHCP Support <input type="checkbox"/> Storage Extend <input checked="" type="checkbox"/> Multi-TCP Connection	Serial Baud Rate: 115200 Data Bits: 8 Parity: None Stop Bits: 1 Flow Control: None	Framing Rule Max Frame Length: 1300 (Byte) Max Interval(Smaller will better): 3 (Ms)

1 Get Default Save As Default Load Default Modify Key Firmware/Config Restart Dev 2 Modify Setting Cancel

Question:What should I do if the web configuration interface cannot be opened?

Answer:

Other firmware such as configuration download MQTT and Jetson Modbus covers the configuration interface webpage file, and it is necessary to re-download the [2043 configuration interface webpage file](#) to RS485 TO ETH (B):

Webpage directly download mode
Webpage directly in local PC:
E:\FAQ-QUECTEL\RS485 TO ETH B\2043_waveshare_web_zx

Special configs:

Code file download mode
Select code file:
C:\firmware.bin

Download through the network
Device IP address or domain: 192.168.10.61
Download port (Don't modify): 1092

Download through serial port
Serial port: COM1
Baundrate: 115200

Device modual/type: 2003
Flash size: 256 KB
DevID: 285FCAD56BAD

Please close the opened webpage of the modual in the browser, before start download.

Support

Technical Support

If you need technical support or have any feedback/review, please click the **Submit Now** button to submit a ticket, Our support team will check and reply to you within 1 to 2 working days. Please be patient as we make every effort to help you to resolve the issue.

Working Time: 9 AM - 6 AM GMT+8 (Monday to Friday)

[Submit Now](#)