

GDML 2011 GB1 LED 48

GDML 2011 LED 120 YE

GDML 2011 LED 120 VR YE

GDML 2011 LED 230 YE

transparent transp. transp.
933 925-212
933 925-712

transparent transp. transp.
933 738-212
933 738-712

transparent transp. transp.
933 927-212
933 927-712

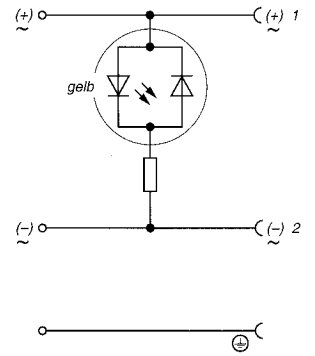
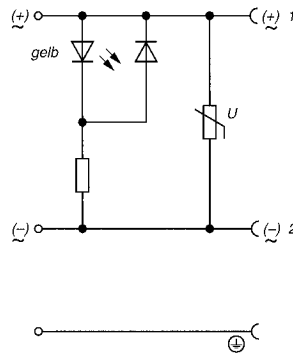
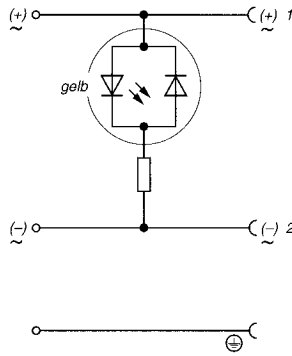
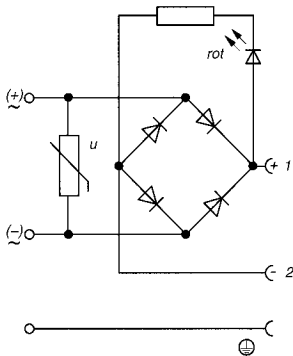
transparent transp. transp.
933 739-212
933 739-712

50 Stück each pièces

50 Stück each pièces

50 Stück each pièces

50 Stück each pièces



2 + ⊕

2 + ⊕

2 + ⊕

2 + ⊕

DIN 43 650-A

DIN 43 650-A

DIN 43 650-A

DIN 43 650-A

Brückengleichrichter mit Schutzbeschlaltung (Varistor) und Funktionsanzeige (LED)

Bridge-type rectifier with protective circuit (varistor) and function indicator (LED)

Pont redresseur avec circuit de protection (varistance) et affichage des fonctions (DEL)

Funktionsanzeige (bipolare LED)

function indicator (bipolar LED)

affichage des fonctions (DEL bipolaire)

Funktionsanzeige (LED) mit Freilaufdiode und Schutzbeschlaltung (Varistor)

Function indicator (LED) with freewheeling diode and protective circuit (varistor)

Affichage des fonctions (DEL) avec diode roue libre et circuit de protection (varistance)

Funktionsanzeige (bipolare LED)

function indicator (bipolar LED)

affichage des fonctions (DEL bipolaire)

Seite Page Page 10

UC 48 V (≈)

3

2 A

Seite Page Page 10

UC 120 V (≈)

3

8 A

Seite Page Page 10

UC 120 V (≈)

3

8 A

Seite Page Page 10

UC 250 V (≈)

3

8 A

LED rot LED red *DEL rouge*

bipolare LED gelb bipolar LED yellow *DEL bipolaire jaune*

LED gelb LED yellow *DEL jaune*

bipolare LED gelb bipolar LED yellow *DEL bipolaire jaune*

Varistor varistor *varistance*

Brückengleichrichter

bridge-type rectifier

pont redresseur

-40 ... + 90 °C

Varistor varistor *varistance*

-40 ... + 90 °C

-40 ... + 90 °C

-40 ... + 90 °C

Pg 11

ø 4,5 ... 11 mm / max. 0,75 mm²

Schrauben screw visser

Pg 11

ø 4,5 ... 11 mm / max. 1,5 mm²

Schrauben screw visser

Pg 11

ø 4,5 ... 11 mm / max. 1,5 mm²

Schrauben screw visser

Pg 11

ø 4,5 ... 11 mm / max. 1,5 mm²

Schrauben screw visser

GDM 3-7 730 801-002
GDM 3-21 731 739-002
GDM 3-16 731 531-002
GDM 3011-8 732 574-001
GDM 3011 RF-1 734 363-001

GDM 3-7 730 801-002
GDM 3-21 731 739-002
GDM 3-16 731 531-002
GDM 3011-8 732 574-001
GDM 3011 RF-1 734 363-001

GDM 3-7 730 801-002
GDM 3-21 731 739-002
GDM 3-16 731 531-002
GDM 3011-8 732 574-001
GDM 3011 RF-1 734 363-001

GDM 3-7 730 801-002
GDM 3-21 731 739-002
GDM 3-16 731 531-002
GDM 3011-8 732 574-001
GDM 3011 RF-1 734 363-001