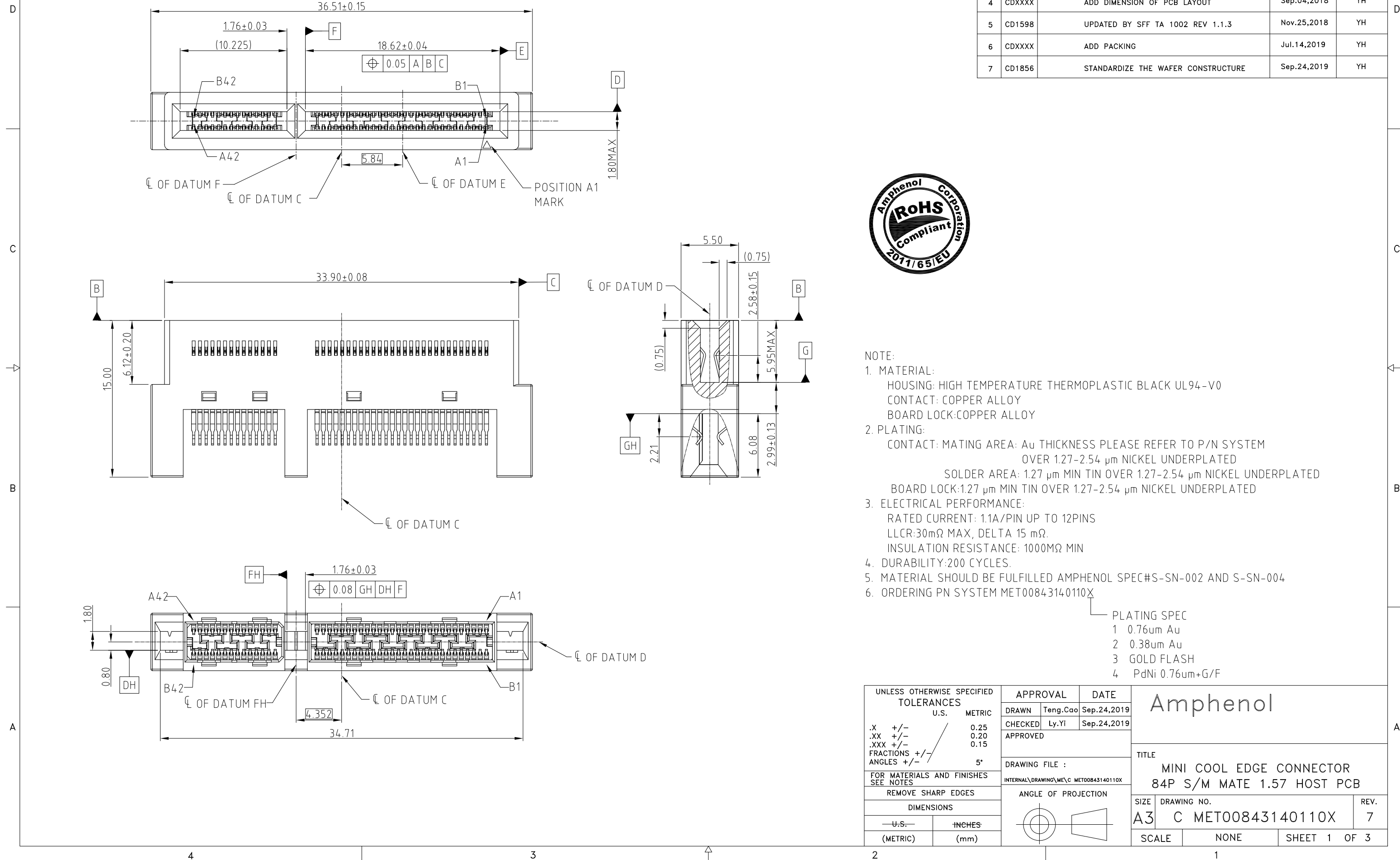


This document is the property of Amphenol Corporation and is delivered on the express condition that it is not to be disclosed, reproduced or used, in whole or in part, for manufacture or sale by anyone other than Amphenol Corporation without its prior consent, & that no right is granted to disclose or to use any information in this document.

# CUSTOMER DRAWING

## REVISIONS

SYM	ECN	DESCRIPTION	DATE	APPROVED
1	CDXXXX	PRELIMINARY PROPOSAL	Jun.14,2018	YH
2	CDXXXX	REVISE THE PCB THICKNESS TOLERANCE AND PAD TRUE POSITION	Aug.16,2018	YH
3	CDXXXX	REVISE THE DRAWING	Sep.01,2018	YH
4	CDXXXX	ADD DIMENSION OF PCB LAYOUT	Sep.04,2018	YH
5	CD1598	UPDATED BY SFF TA 1002 REV 1.1.3	Nov.25,2018	YH
6	CDXXXX	ADD PACKING	Jul.14,2019	YH
7	CD1856	STANDARDIZE THE WAFER CONSTRUCTURE	Sep.24,2019	YH



- NOTE:
- MATERIAL:
    - HOUSING: HIGH TEMPERATURE THERMOPLASTIC BLACK UL94-V0
    - CONTACT: COPPER ALLOY
    - BOARD LOCK: COPPER ALLOY
  - PLATING:
    - CONTACT: MATING AREA: Au THICKNESS PLEASE REFER TO P/N SYSTEM OVER 1.27-2.54 μm NICKEL UNDERPLATED
    - SOLDER AREA: 1.27 μm MIN TIN OVER 1.27-2.54 μm NICKEL UNDERPLATED
    - BOARD LOCK: 1.27 μm MIN TIN OVER 1.27-2.54 μm NICKEL UNDERPLATED
  - ELECTRICAL PERFORMANCE:
    - RATED CURRENT: 1.1A/PIN UP TO 12PINS
    - LLCR: 30mΩ MAX, DELTA 15 mΩ
    - INSULATION RESISTANCE: 1000MΩ MIN
  - DURABILITY: 200 CYCLES.
  - MATERIAL SHOULD BE FULFILLED AMPHENOL SPEC#S-SN-002 AND S-SN-004
  - ORDERING PN SYSTEM MET00843140110X

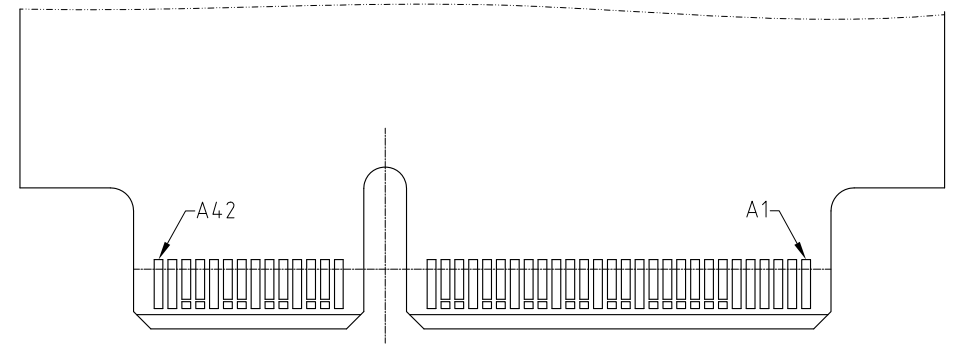
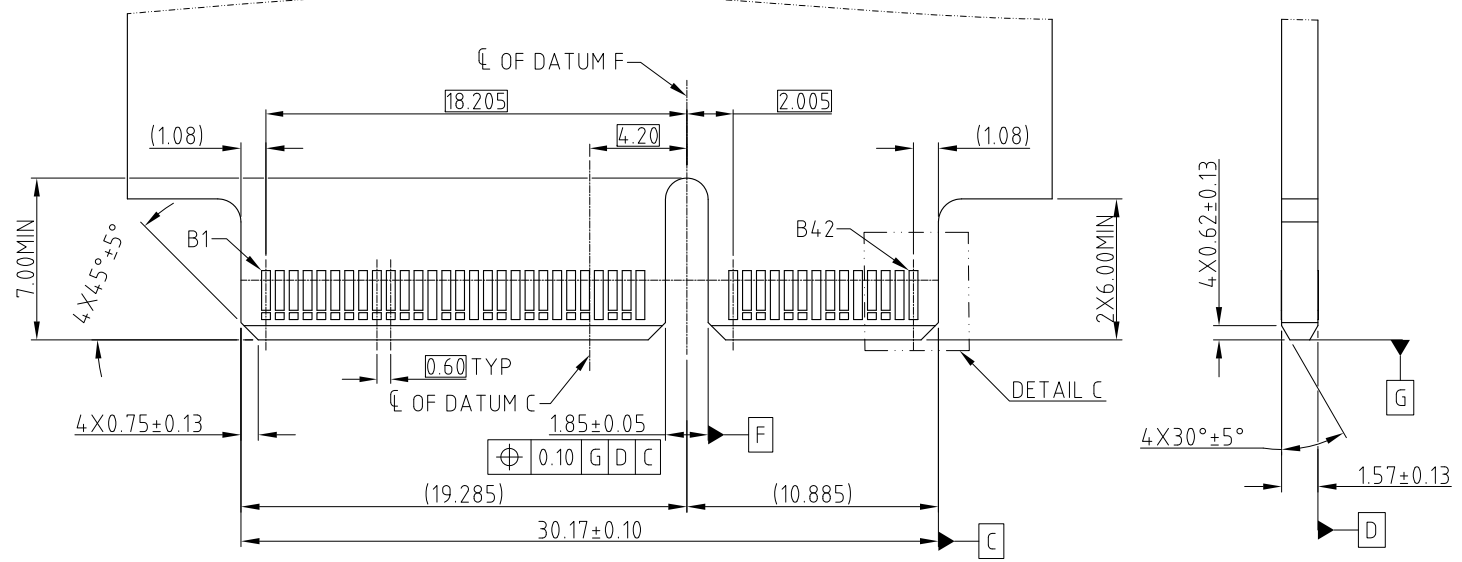
- PLATING SPEC
- 0.76um Au
  - 0.38um Au
  - GOLD FLASH
  - PdNi 0.76um+G/F

UNLESS OTHERWISE SPECIFIED TOLERANCES		APPROVAL		DATE		Amphenol			
	U.S.	METRIC	DRAWN	Teng.Cao	Sep.24,2019			CHECKED	Ly.Yi
.X	+/-								
.XX	+/-								
.XXX	+/-								
FRACTIONS	+/-								
ANGLES	+/-								
FOR MATERIALS AND FINISHES SEE NOTES		REMOVE SHARP EDGES		DRAWING FILE :		TITLE			
		DIMENSIONS		INTERNAL\DRAWING\ME\C MET00843140110X		MINI COOL EDGE CONNECTOR			
—U.S.—		INCHES		ANGLE OF PROJECTION		84P S/M MATE 1.57 HOST PCB			
(METRIC)		(mm)				SIZE			
						DRAWING NO.			
						A3 C MET00843140110X			
						REV.			
						7			
						SCALE			
						NONE			
						SHEET 1 OF 3			

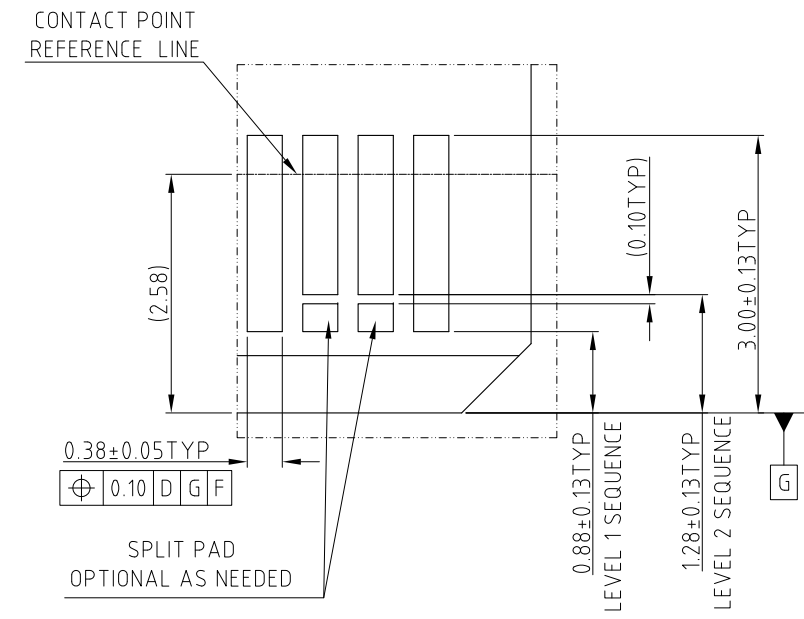
This document is the property of Amphenol Corporation and is delivered on the express condition that it is not to be disclosed, reproduced or used, in whole or in part, for manufacture or sale by anyone other than Amphenol Corporation without its prior consent, & that no right is granted to disclose or to use any information in this document.

CUSTOMER DRAWING

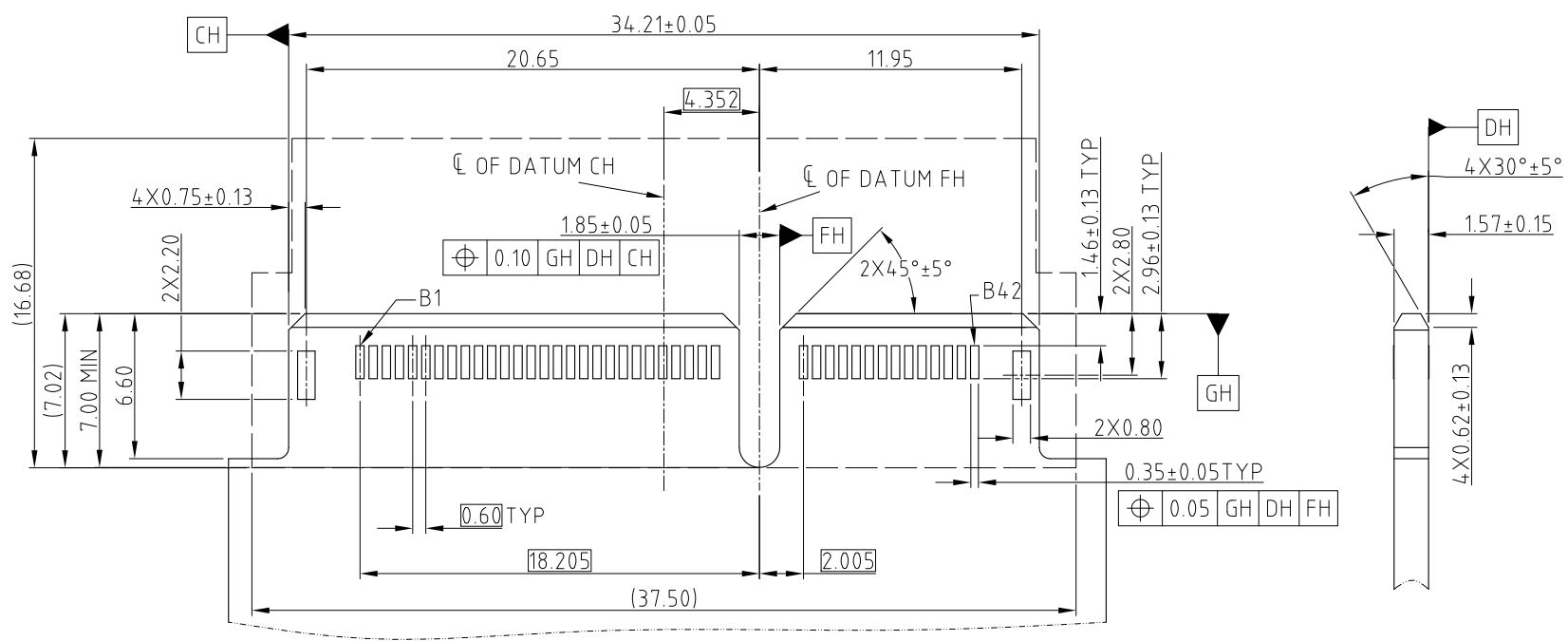
REVISIONS				
SYM	ECN	DESCRIPTION	DATE	APPROVED
		SEE SHEET 1		



RECOMMENDED AIC MATING CARD



DETAIL C SCALE 4:1



NOTE: POSITION A1 ON THE OPPOSITE SIDE OF CARD OF B1  
84-PIN STRADDLE MOUNT FOOTPRINT  
GENERAL TOLERANCE ±0.05MM

UNLESS OTHERWISE SPECIFIED TOLERANCES	
U.S.	METRIC
.X +/-	0.25
.XX +/-	0.20
.XXX +/-	0.15
FRACTIONS +/-	
ANGLES +/-	5°

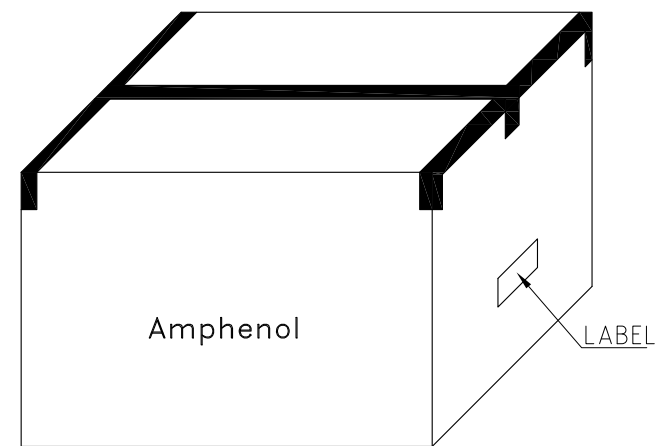
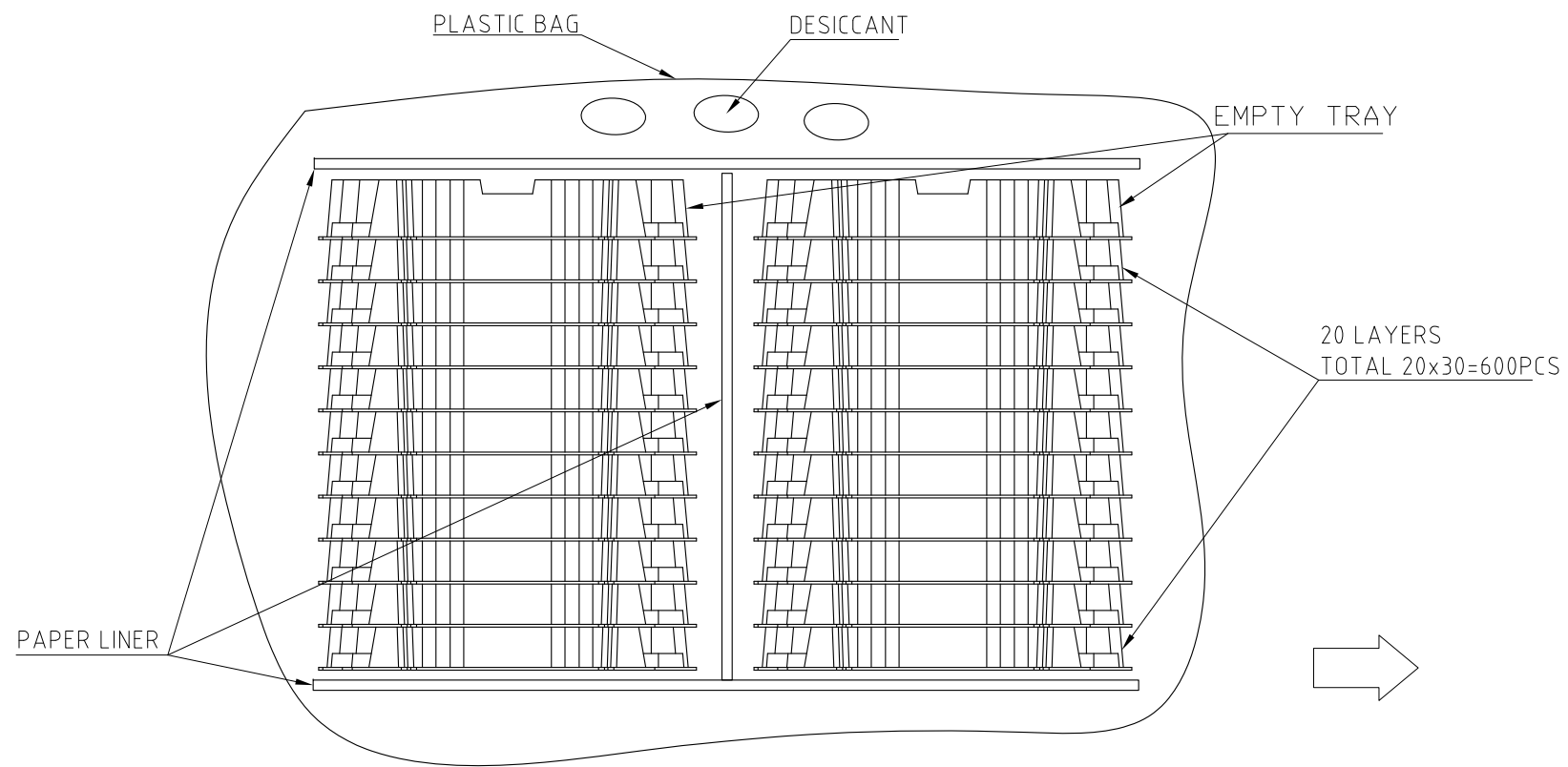
APPROVAL		DATE
DRAWN	Teng.Cao	Sep.24,2019
CHECKED	Ly.Yi	Sep.24,2019
APPROVED		
DRAWING FILE :		
INTERNAL\DRAWING\ME\C\MET00843140110X		
REMOVE SHARP EDGES		
ANGLE OF PROJECTION		
DIMENSIONS		
—U.S.—	INCHES	
(METRIC)	(mm)	

Amphenol		
TITLE		
MINI COOL EDGE CONNECTOR 84P S/M MATE 1.57 HOST PCB		
SIZE	DRAWING NO.	REV.
A3	C MET00843140110X	7
SCALE	NONE	SHEET 2 OF 3

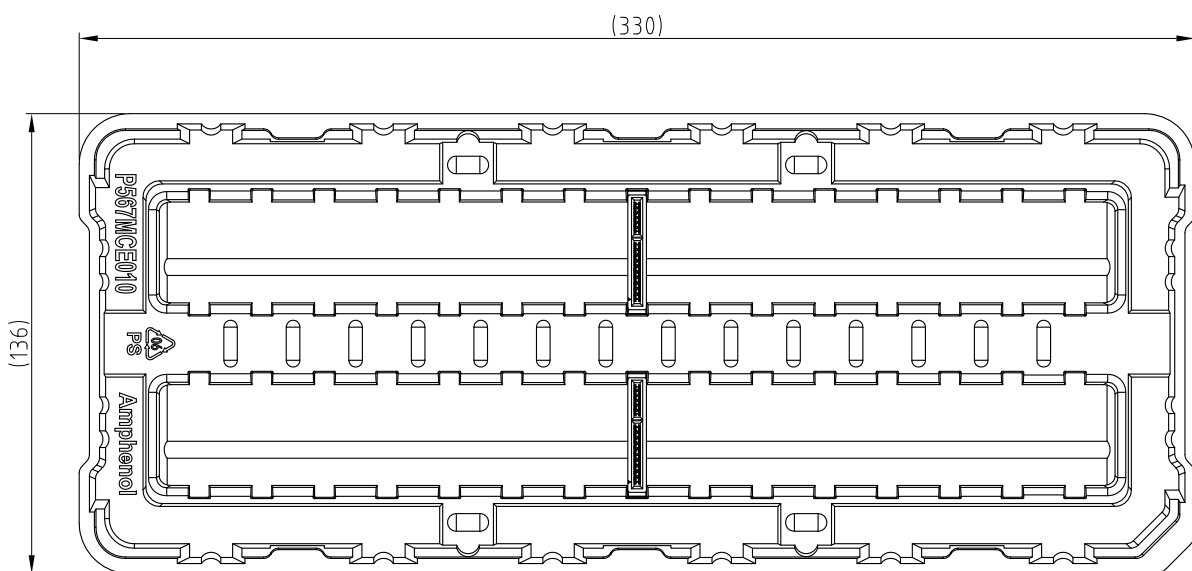
This document is the property of Amphenol Corporation and is delivered on the express condition that it is not to be disclosed, reproduced or used, in whole or in part, for manufacture or sale by anyone other than Amphenol Corporation without its prior consent, & that no right is granted to disclose or to use any information in this document.

# CUSTOMER DRAWING

REVISIONS				
SYM	ECN	DESCRIPTION	DATE	APPROVED
		SEE SHEET 1		



30 CONNECTORS / TRAY



UNLESS OTHERWISE SPECIFIED TOLERANCES		APPROVAL	DATE	Amphenol		
	U.S. METRIC	DRAWN	Teng.Cao			Sep.24,2019
.X +/-	0.25	CHECKED	Ly.Yi			Sep.24,2019
.XX +/-	0.20	APPROVED			TITLE	
.XXX +/-	0.15				MINI COOL EDGE CONNECTOR	
FRACTIONS +/-					84P S/M MATE 1.57 HOST PCB	
ANGLES +/-	5°				SIZE	
FOR MATERIALS AND FINISHES SEE NOTES		DRAWING FILE :		INTERNAL\DRAWING\ME\C MET00843140110X	DRAWING NO.	
REMOVE SHARP EDGES		ANGLE OF PROJECTION			REV.	
DIMENSIONS					A3	
—U.S.—	INCHES				C MET00843140110X	
(METRIC)	(mm)				7	
		SCALE	NONE	SHEET 3 OF 3		