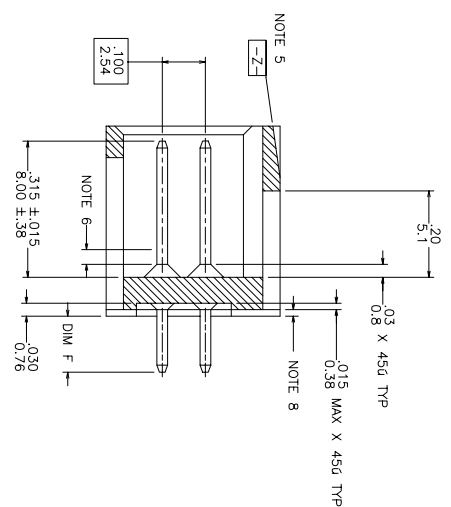
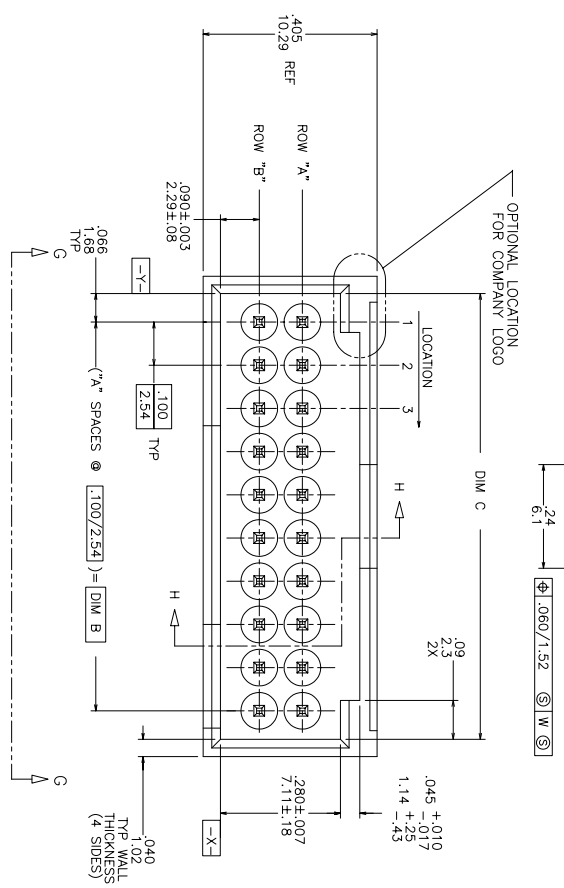
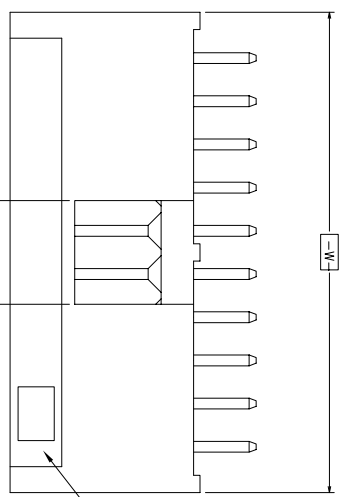


PRODUCT NUMBER  
SEE TABLE

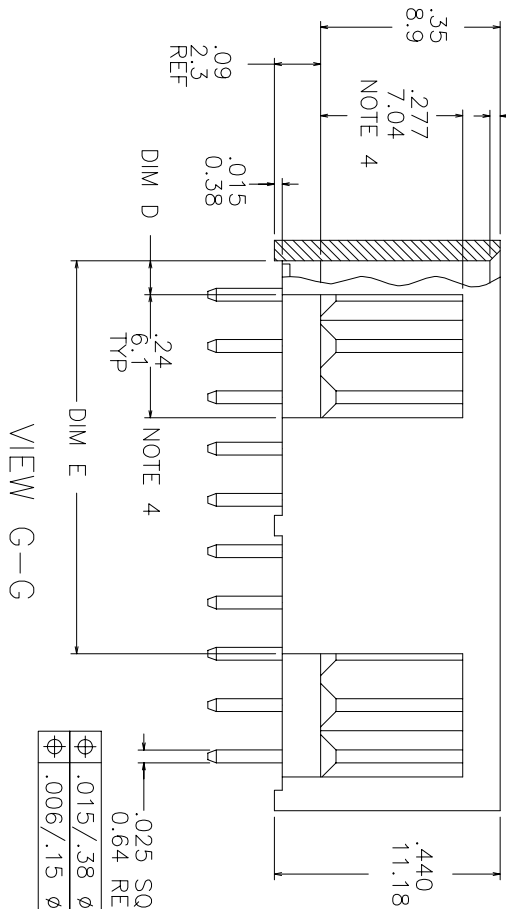


SECTION H-H

| mat'l. code                           | surface             | tolerance           | projection | product family                            |
|---------------------------------------|---------------------|---------------------|------------|---|
| ISO 1302                              | ISO 406             | ISO 1101            | INCH/MM    | HEADER                                    |
| Tolerances unless otherwise specified |                     |                     |            |   |
| XXE.01/XXE.03                         | XXE.005/XXE.013     | scale 2.5:1         |            |   |
| tr ecn no                             | dr date             | angles              | line art   | title                                     |
| NOTE 1 & 3                            |                     |                     |            | STRAIGHT HEADER FOR ROUND WIRE RECEPTACLE |
| B V00853                              | MRC 9/18/90         |                     |            | dwg no 68664                              |
| C V70775                              | SAR 6/2/97          |                     |            | sheet 1 of 6 size A3                      |
| D V71034                              | EPK 9/24/97 0 ± .2" |                     |            | type Product Customer Drawing             |
| E V01576                              | MDF 7/5/00 dr       | M. CORNUMAN 9/18/90 |            |   |
| F M05-0167                            | ERE 7/23/05 engr    | M. LEACH 9/18/90    |            |   |
| G M07-0116                            | ACS 2/24/07 chr     | M. LEACH 9/18/90    |            |   |
| H N07-0150                            | MHI 8/01/07 oppd    | M. LEACH 9/18/90    |            |   |
| sheet revision                        | H H H H H H         |                     |            |   |
| index sheet                           | 1 2 3 4 5 6         |                     |            |   |

PRODUCT NO.  
SEE TABLE

.020 X 45°CHAM.TYP  
0.51



|   |            |     |   |     |   |     |             |
|---|------------|-----|---|-----|---|-----|-------------|
| ⊕ | .015/.38 ⌀ | (M) | X | (M) | Y | (M) | AT TIPS,TYP |
| ⊕ | .006/.15 ⌀ | (M) | X | (M) | Y | (M) | AT BASE,TYP |

NOTES:

1. TERMINAL MATERIAL: 3/4 HARD PHOS. BRONZE ALLOY, UNS-C51000.
2. TERMINAL PLATING: 30u" / 0.76u Au OR GXT OVER 50u" / 1.27u Ni PLATING ON SWAGED TIPS MANUFACTURERS OPTION.
3. MOLDING MATERIAL: GLASS FILLED POLYESTER, FLAME RETARDANT PER UL-94V-0. COLOR: BLACK.
4. .020/.51 MAX FLASH AROUND ALL WINDOWS.
5. COMPANY LOGO MOLDED IN ON DATUM SURFACE -Z- APPROX. AS SHOWN.
6. .030/.76 MAX FLASH PERMISSIBLE ON THIS END OF PINS.
7. OTHER PLATINGS ARE AVAILABLE ON 68663, 68665, AND 68666.
8. .015/.38 MAX FLASH PERMISSIBLE ON THIS END OF PINS.
9. PLATING OPTIONS:  
MAY BE EITHER GOLD OR GXT PLATED AT MANUFACTURER'S OPTION.
10. ADD "LF" SUFFIX AT THE END OF PART NUMBER FOR LEAD FREE OPTION
11. THIS PRODUCT MEETS EUROPEAN UNION DIRECTIVES AND OTHER COUNTRY REGULATION AS DESCRIBED IN GS-22-008.
12. THE HOUSING WILL WITHSTAND EXPOSURE TO 260°C PEAK TEMPERATURE FOR 15 SECONDS IN A WAVE SOLDER APPLICATION WITH A 1.5mm MINIMUM THICK CIRCUIT BOARD. SEE APPLICATION NOTES/PROCEDURES IF THEY ARE AVAILABLE.

|   |   |   |   |   |   |
|---|---|---|---|---|---|
| 1 | 2 | 3 | 4 | 5 | 6 |
|---|---|---|---|---|---|

|                                       |                 |                 |                 |                 |                |
|---------------------------------------|-----------------|-----------------|-----------------|-----------------|----------------|
| mat'l. code                           | NOTE 1 & 3      | surface         | tolerance       | projection      | product family |
| ISO 1302                              | ISO 406         | ISO 1101        | ISO 1101        | ISO 1101        | HEADER         |
| tolerances unless otherwise specified |                 |                 |                 |                 |                |
| angles                                | in/eqr          | in/eqr          | in/eqr          | in/eqr          |                |
| 0° ± 2'                               | XXX.XXX/XXX.XXX | XXX.XXX/XXX.XXX | XXX.XXX/XXX.XXX | XXX.XXX/XXX.XXX |                |
| dr                                    | M. CORNUMAN     | 9/18/90         |                 |                 |                |
| engr                                  | M. LEACH        | 9/18/90         |                 |                 |                |
| chr                                   | M. LEACH        | 9/18/90         |                 |                 |                |
| pppd                                  | M. LEACH        | 9/18/90         |                 |                 |                |
| sheet index                           | revision        |                 |                 |                 |                |
|                                       | sheet           |                 |                 |                 |                |



title  
STRAIGHT HEADER FOR  
ROUND WIRE RECEPTACLE

dwg no  
68664

sheet 2 of 6

Product Customer Drawing

1 2 3 4 5 6

| PRODUCT NO<br>NOTE 10 | NO OF<br>POS | NO OF<br>PINS | A<br>SPACES | DIM [B]     | DIM C ± .005<br>±0.13 | DIM D ± .005<br>±0.13 | DIM E ± .005<br>±0.13 | DIM F     | POL. POS. |       |
|-----------------------|--------------|---------------|-------------|-------------|-----------------------|-----------------------|-----------------------|-----------|-----------|-------|
|                       |              |               |             |             |                       |                       |                       |           | ROW A     | ROW B |
| 68664-001             | 6            | 6             | 2           | .200/5.08   | .332/8.43             | .066/1.68             |                       | .130/3.30 |           |       |
| -002                  | 8            | 8             | 3           | .300/7.62   | .432/10.97            | .066/1.68             |                       |           |           |       |
| -003                  | 10           | 10            | 4           | .400/10.16  | .532/13.52            | .166/4.22             |                       |           |           |       |
| -004                  | 12           | 12            | 5           | .500/12.70  | .632/16.05            | .166/4.22             |                       |           |           |       |
| -005                  | 14           | 14            | 6           | .600/15.24  | .732/18.59            | .266/6.76             |                       |           |           |       |
| -006                  | 16           | 16            | 7           | .700/17.78  | .832/21.13            | .266/6.76             |                       |           |           |       |
| -007                  | 18           | 18            | 8           | .800/20.32  | .932/23.67            | .366/9.30             |                       |           |           |       |
| -008                  | 20           | 20            | 9           | .900/22.86  | 1.032/26.21           | .466/11.88            |                       |           |           |       |
| -009                  | 22           | 22            | 10          | 1.000/25.40 | 1.132/28.75           | .566/14.42            |                       |           |           |       |
| -010                  | 24           | 24            | 11          | 1.100/27.94 | 1.232/31.29           | .666/16.96            |                       |           |           |       |
| -011                  | 26           | 26            | 12          | 1.200/30.48 | 1.332/33.83           | .766/19.50            |                       |           |           |       |
| -012                  | 28           | 28            | 13          | 1.300/33.02 | 1.432/36.37           | .866/22.04            |                       |           |           |       |
| -013                  | 30           | 30            | 14          | 1.400/35.56 | 1.532/38.91           | .966/24.58            |                       |           |           |       |
| -014                  | 32           | 32            | 15          | 1.500/38.10 | 1.632/41.45           | 1.066/27.12           |                       |           |           |       |
| -015                  | 34           | 34            | 16          | 1.600/40.64 | 1.732/43.99           | 1.166/29.66           |                       |           |           |       |
| -016                  | 36           | 36            | 17          | 1.700/43.18 | 1.832/46.53           | 1.266/32.20           |                       |           |           |       |
| -017                  | 38           | 38            | 18          | 1.800/45.72 | 1.932/49.07           | 1.366/34.74           |                       |           |           |       |
| -018                  | 40           | 40            | 19          | 1.900/48.26 | 2.032/51.61           | 1.466/37.28           |                       |           |           |       |
| -019                  | 42           | 42            | 20          | 2.000/50.80 | 2.132/54.15           | 1.566/39.82           |                       |           |           |       |
| -020                  | 44           | 44            | 21          | 2.100/53.34 | 2.232/56.69           | 1.666/42.36           |                       |           |           |       |
| -021                  | 46           | 46            | 22          | 2.200/55.88 | 2.332/59.23           | 1.766/44.90           |                       |           |           |       |
| -022                  | 48           | 48            | 23          | 2.300/58.42 | 2.432/61.77           | 1.866/47.44           |                       |           |           |       |
| -023                  | 50           | 50            | 24          | 2.400/60.96 | 2.532/64.31           | 1.966/49.98           |                       |           |           |       |
| -024                  | 52           | 52            | 25          | 2.500/63.50 | 2.632/66.85           | 2.066/52.52           |                       |           |           |       |
| -025                  | 54           | 54            | 26          | 2.600/66.04 | 2.732/69.39           | 2.166/55.06           |                       |           |           |       |
| -026                  | 56           | 56            | 27          | 2.700/68.58 | 2.832/71.93           | 2.266/57.60           |                       |           |           |       |
| -027                  | 58           | 58            | 28          | 2.800/71.12 | 2.932/74.47           | 2.366/60.14           |                       |           |           |       |
| -028                  | 60           | 60            | 29          | 2.900/73.66 | 3.032/77.01           | 2.466/62.68           |                       |           |           |       |
| -029                  | 62           | 62            | 30          | 3.000/76.20 | 3.132/79.55           | 2.566/65.22           |                       |           |           |       |
| -030                  | 64           | 64            | 31          | 3.100/78.74 | 3.232/82.09           | 2.666/67.76           |                       |           |           |       |
| -031                  | 66           | 66            | 32          | 3.200/81.28 | 3.332/84.63           | 2.766/70.30           |                       |           |           |       |
| -032                  | 68           | 68            | 33          | 3.300/83.82 | 3.432/87.17           | 2.866/72.84           |                       |           |           |       |
| -033                  | 70           | 70            | 34          | 3.400/86.36 | 3.532/89.71           | 2.966/75.38           |                       |           |           |       |
| 68664-034             | 72           | 72            | 35          | 3.500/88.90 | 3.632/92.25           | 3.066/77.92           |                       |           |           |       |

| mat'l. code       | surface                               | tolerance       | projection  | product family           |
|-------------------|---------------------------------------|-----------------|-------------|--------------------------|
| NOTE 1 & 3        | ISO 1302                              | ISO 406         |             | HEADER                   |
| tr ecn no dr date | tolerances unless otherwise specified | ISO 1101        |             |                          |
| H                 | angles                                | XXE.01/XXD.3    | INCH/MM     | title                    |
|                   | 0°±2'                                 | XXE.005/XXD.13  | scale 2.5:1 | STRAIGHT HEADER FOR      |
|                   | dr                                    | XXE.000/XXD.051 |             | ROUND WIRE RECEPTACLE    |
|                   | engr                                  |                 |             | dwg no                   |
|                   | chr                                   |                 |             | 68664                    |
|                   | pppd                                  |                 |             | sheet 3 of 6 size        |
|                   |                                       |                 |             | A3                       |
| sheet             | revision                              |                 |             | type                     |
| index             | sheet                                 |                 |             | Product Customer Drawing |



Copyright FCI

form: A3 1 2 3 4 5 6

1 2 3 4 5 6

| PRODUCT NO<br>NOTE 10 | NO OF<br>POS | NO OF<br>PINS | A<br>SPACES | DIM [B]     | DIM C ±0.05<br>±0.13 | DIM D ±0.05<br>±0.13 | DIM E ±0.05<br>±0.13 | DIM F<br>.155/3.94 | POL. POS. |       |
|-----------------------|--------------|---------------|-------------|-------------|----------------------|----------------------|----------------------|--------------------|-----------|-------|
|                       |              |               |             |             |                      |                      |                      |                    | ROW A     | ROW B |
| 68664-035             | 6            | 6             | 2           | .200/5.08   | .332/8.43            | .066/1.68            | -----                | .155/3.94          |           |       |
| -036                  | 8            | 8             | 3           | .300/7.62   | .432/10.97           | .066/1.68            | -----                |                    |           |       |
| -037                  | 10           | 10            | 4           | .400/10.16  | .532/13.52           | .166/4.22            | -----                |                    |           |       |
| -038                  | 12           | 12            | 5           | .500/12.70  | .632/16.05           | .166/4.22            | -----                |                    |           |       |
| -039                  | 14           | 14            | 6           | .600/15.24  | .732/18.59           | .266/6.76            | -----                |                    |           |       |
| -040                  | 16           | 16            | 7           | .700/17.78  | .832/21.13           | .266/6.76            | -----                |                    |           |       |
| -041                  | 18           | 18            | 8           | .800/20.32  | .932/23.67           | .366/9.30            | -----                |                    |           |       |
| -042                  | 20           | 20            | 9           | .900/22.86  | 1.032/26.21          | .066/1.68            | .766/19.46           |                    |           |       |
| -043                  | 22           | 22            | 10          | 1.000/25.40 | 1.132/28.75          |                      | .866/22.00           |                    |           |       |
| -044                  | 24           | 24            | 11          | 1.100/27.94 | 1.232/31.29          |                      | .966/24.54           |                    |           |       |
| -045                  | 26           | 26            | 12          | 1.200/30.48 | 1.332/33.83          |                      | 1.066/27.08          |                    |           |       |
| -046                  | 28           | 28            | 13          | 1.300/33.02 | 1.432/36.37          |                      | 1.166/29.62          |                    |           |       |
| -047                  | 30           | 30            | 14          | 1.400/35.56 | 1.532/38.91          |                      | 1.266/32.16          |                    |           |       |
| -048                  | 32           | 32            | 15          | 1.500/38.10 | 1.632/41.45          |                      | 1.366/34.70          |                    |           |       |
| -049                  | 34           | 34            | 16          | 1.600/40.64 | 1.732/43.99          |                      | 1.466/37.24          |                    |           |       |
| -050                  | 36           | 36            | 17          | 1.700/43.18 | 1.832/46.53          |                      | 1.566/39.78          |                    |           |       |
| -051                  | 38           | 38            | 18          | 1.800/45.72 | 1.932/49.07          |                      | 1.666/42.32          |                    |           |       |
| -052                  | 40           | 40            | 19          | 1.900/48.26 | 2.032/51.61          |                      | 1.766/44.86          |                    |           |       |
| -053                  | 42           | 42            | 20          | 2.000/50.80 | 2.132/54.15          |                      | 1.866/47.40          |                    |           |       |
| -054                  | 44           | 44            | 21          | 2.100/53.34 | 2.232/56.69          |                      | 1.966/49.94          |                    |           |       |
| -055                  | 46           | 46            | 22          | 2.200/55.88 | 2.332/59.23          |                      | 2.066/52.48          |                    |           |       |
| -056                  | 48           | 48            | 23          | 2.300/58.42 | 2.432/61.77          |                      | 2.166/55.02          |                    |           |       |
| -057                  | 50           | 50            | 24          | 2.400/60.96 | 2.532/64.31          |                      | 2.266/57.56          |                    |           |       |
| -058                  | 52           | 52            | 25          | 2.500/63.50 | 2.632/66.85          |                      | 2.366/60.10          |                    |           |       |
| -059                  | 54           | 54            | 26          | 2.600/66.04 | 2.732/69.39          |                      | 2.466/62.64          |                    |           |       |
| -060                  | 56           | 56            | 27          | 2.700/68.58 | 2.832/71.93          |                      | 2.566/65.18          |                    |           |       |
| -061                  | 58           | 58            | 28          | 2.800/71.12 | 2.932/74.47          |                      | 2.666/67.72          |                    |           |       |
| -062                  | 60           | 60            | 29          | 2.900/73.66 | 3.032/77.01          |                      | 2.766/70.26          |                    |           |       |
| -063                  | 62           | 62            | 30          | 3.000/76.20 | 3.132/79.55          |                      | 2.866/72.80          |                    |           |       |
| -064                  | 64           | 64            | 31          | 3.100/78.74 | 3.232/82.09          |                      | 2.966/75.34          |                    |           |       |
| -065                  | 66           | 66            | 32          | 3.200/81.28 | 3.332/84.63          |                      | 3.066/77.88          |                    |           |       |
| -066                  | 68           | 68            | 33          | 3.300/83.82 | 3.432/87.17          |                      | 3.166/80.42          |                    |           |       |
| -067                  | 70           | 70            | 34          | 3.400/86.36 | 3.532/89.71          |                      | 3.266/82.96          |                    |           |       |
| 68664-068             | 72           | 72            | 35          | 3.500/88.90 | 3.632/92.25          | .066/1.68            | 3.366/85.50          | .155/3.94          |           |       |

|                    |  |                                       |  |                     |  |             |  |                          |  |
|--------------------|--|---------------------------------------|--|---------------------|--|-------------|--|--------------------------|--|
| mat'l. code        |  | surface                               |  | tolerance           |  | projection  |  | product family           |  |
| NOTE 1 & 3         |  | ISO 1302                              |  | ISO 406             |  | INCH/MM     |  | HEADER                   |  |
| lit ecn no dr date |  | tolerances unless otherwise specified |  | ISO 1101            |  | scale 2.5:1 |  | title                    |  |
| H                  |  | angles                                |  | XXE.01/XXH.3        |  | INCH/MM     |  | STRAIGHT HEADER FOR      |  |
|                    |  | line art                              |  | XXE.005/XXH.3       |  |             |  | ROUND WIRE RECEPTACLE    |  |
|                    |  | 0°±2°                                 |  | XXXX.000/XXXX.051   |  |             |  | dwg no                   |  |
|                    |  | dr                                    |  | M. CORNUMAN 9/18/90 |  |             |  | 68664                    |  |
|                    |  | engr                                  |  | M. LEACH 9/18/90    |  |             |  | Sheet 4 of 6 size        |  |
|                    |  | chr                                   |  | M. LEACH 9/18/90    |  |             |  | A3                       |  |
|                    |  | pppd                                  |  | M. LEACH 9/18/90    |  |             |  | type                     |  |
| sheet              |  | revision                              |  |                     |  |             |  | Product Customer Drawing |  |
| index              |  | sheet                                 |  |                     |  |             |  |                          |  |

| PRODUCT NO<br>NOTE 10 | NO OF<br>POS | NO OF<br>PINS | A<br>SPACES | DIM [B]     | DIM C ±.005<br>±0.13 | DIM D ±.005<br>±0.13 | DIM E ±.005<br>±0.13 | DIM F       | POL. POS. |       |
|-----------------------|--------------|---------------|-------------|-------------|----------------------|----------------------|----------------------|-------------|-----------|-------|
|                       |              |               |             |             |                      |                      |                      |             | ROW A     | ROW B |
| 68664-069             | 6            | 6             | 2           | .200/5.08   | .332/8.43            | .066/1.68            | -----                | .200/5.08   |           |       |
| -070                  | 8            | 8             | 3           | .300/7.62   | .432/10.97           | .066/1.68            | -----                |             |           |       |
| -071                  | 10           | 10            | 4           | .400/10.16  | .532/13.52           | .166/4.22            | -----                |             |           |       |
| -072                  | 12           | 12            | 5           | .500/12.70  | .632/16.05           | .166/4.22            | -----                |             |           |       |
| -073                  | 14           | 14            | 6           | .600/15.24  | .732/18.59           | .266/6.76            | -----                |             |           |       |
| -074                  | 16           | 16            | 7           | .700/17.78  | .832/21.13           | .266/6.76            | -----                |             |           |       |
| -075                  | 18           | 18            | 8           | .800/20.32  | .932/23.67           | .366/9.30            | -----                |             |           |       |
| -076                  | 20           | 20            | 9           | .900/22.86  | 1.032/26.21          | .066/1.68            | -----                |             |           |       |
| -077                  | 22           | 22            | 10          | 1.000/25.40 | 1.132/28.75          |                      | -----                | .866/22.00  |           |       |
| -078                  | 24           | 24            | 11          | 1.100/27.94 | 1.232/31.29          |                      | -----                | .966/24.54  |           |       |
| -079                  | 26           | 26            | 12          | 1.200/30.48 | 1.332/33.83          |                      | -----                | 1.066/27.08 |           |       |
| -080                  | 28           | 28            | 13          | 1.300/33.02 | 1.432/36.37          |                      | -----                | 1.166/29.62 |           |       |
| -081                  | 30           | 30            | 14          | 1.400/35.56 | 1.532/38.91          |                      | -----                | 1.266/32.16 |           |       |
| -082                  | 32           | 32            | 15          | 1.500/38.10 | 1.632/41.45          |                      | -----                | 1.366/34.70 |           |       |
| -083                  | 34           | 34            | 16          | 1.600/40.64 | 1.732/43.99          |                      | -----                | 1.466/37.24 |           |       |
| -084                  | 36           | 36            | 17          | 1.700/43.18 | 1.832/46.53          |                      | -----                | 1.566/39.78 |           |       |
| -085                  | 38           | 38            | 18          | 1.800/45.72 | 1.932/49.07          |                      | -----                | 1.666/42.32 |           |       |
| -086                  | 40           | 40            | 19          | 1.900/48.26 | 2.032/51.61          |                      | -----                | 1.766/44.86 |           |       |
| -087                  | 42           | 42            | 20          | 2.000/50.80 | 2.132/54.15          |                      | -----                | 1.866/47.40 |           |       |
| -088                  | 44           | 44            | 21          | 2.100/53.34 | 2.232/56.69          |                      | -----                | 1.966/49.94 |           |       |
| -089                  | 46           | 46            | 22          | 2.200/55.88 | 2.332/59.23          |                      | -----                | 2.066/52.48 |           |       |
| -090                  | 48           | 48            | 23          | 2.300/58.42 | 2.432/61.77          |                      | -----                | 2.166/55.02 |           |       |
| -091                  | 50           | 50            | 24          | 2.400/60.96 | 2.532/64.31          |                      | -----                | 2.266/57.56 |           |       |
| -092                  | 52           | 52            | 25          | 2.500/63.50 | 2.632/66.85          |                      | -----                | 2.366/60.10 |           |       |
| -093                  | 54           | 54            | 26          | 2.600/66.04 | 2.732/69.39          |                      | -----                | 2.466/62.64 |           |       |
| -094                  | 56           | 56            | 27          | 2.700/68.58 | 2.832/71.93          |                      | -----                | 2.566/65.18 |           |       |
| -095                  | 58           | 58            | 28          | 2.800/71.12 | 2.932/74.47          |                      | -----                | 2.666/67.72 |           |       |
| -096                  | 60           | 60            | 29          | 2.900/73.66 | 3.032/77.01          |                      | -----                | 2.766/70.26 |           |       |
| -097                  | 62           | 62            | 30          | 3.000/76.20 | 3.132/79.55          |                      | -----                | 2.866/72.80 |           |       |
| -098                  | 64           | 64            | 31          | 3.100/78.74 | 3.232/82.09          |                      | -----                | 2.966/75.34 |           |       |
| -099                  | 66           | 66            | 32          | 3.200/81.28 | 3.332/84.63          |                      | -----                | 3.066/77.88 |           |       |
| -100                  | 68           | 68            | 33          | 3.300/83.82 | 3.432/87.17          |                      | -----                | 3.166/80.42 |           |       |
| -101                  | 70           | 70            | 34          | 3.400/86.36 | 3.532/89.71          |                      | -----                | 3.266/82.96 |           |       |
| 68664-102             | 72           | 72            | 35          | 3.500/88.90 | 3.632/92.25          | .066/1.68            | -----                | 3.366/85.50 | .200/5.08 |       |

|             |        |          |      |                                       |  |                     |  |                          |  |
|-------------|--------|----------|------|---------------------------------------|--|---------------------|--|--------------------------|--|
| mat'l. code |        | surface  |      | tolerance                             |  | projection          |  | product family           |  |
| NOTE 1 & 3  |        | ISO 1302 |      | ISO 406                               |  | ISO 1101            |  | HEADER                   |  |
| lfr         | ecn no | dr       | date | tolerances unless otherwise specified |  | INCH/MM             |  | title                    |  |
| H           |        |          |      | 0 ±.2                                 |  | X.XX/01/X.XX/3      |  | STRAIGHT HEADER FOR      |  |
|             |        |          |      | inches                                |  | XXXX.005/XXXX.01    |  | ROUND WIRE RECEPTACLE    |  |
|             |        |          |      | angles                                |  | scale 2.5:1         |  | dwg no                   |  |
|             |        |          |      | dr                                    |  | M. CORNUMAN 9/18/90 |  | 68664                    |  |
|             |        |          |      | engr                                  |  | M. LEACH 9/18/90    |  | sheet 5 of 6 size        |  |
|             |        |          |      | chr                                   |  | M. LEACH 9/18/90    |  | A3                       |  |
|             |        |          |      | pppd                                  |  | M. LEACH 9/18/90    |  | type                     |  |
|             |        |          |      | sheet                                 |  | revision            |  | Product Customer Drawing |  |
|             |        |          |      | index                                 |  | sheet               |  | Drawing                  |  |

| PRODUCT NO<br>NOTE 10 | NO OF<br>POS | NO OF<br>PINS | A<br>SPACES | DIM [B]     | DIM C ±.005<br>±0.13 | DIM D ±.005<br>±0.13 | DIM E ±.005<br>±0.13 | DIM F     | POL. POS. |       |
|-----------------------|--------------|---------------|-------------|-------------|----------------------|----------------------|----------------------|-----------|-----------|-------|
|                       |              |               |             |             |                      |                      |                      |           | ROW A     | ROW B |
| 68664-103             | 6            | 6             | 2           | .200/5.08   | .332/8.43            | .066/1.68            | -----                | .380/9.65 | -----     | ----- |
| -104                  | 8            | 8             | 3           | .300/7.62   | .432/10.97           | .066/1.68            | -----                | .380/9.65 | -----     | ----- |
| -105                  | 12           | 12            | 5           | .500/12.70  | .632/16.05           | .166/4.22            | -----                | .380/9.65 | -----     | ----- |
| -106                  | 16           | 16            | 7           | .700/17.78  | .832/21.13           | .266/6.76            | -----                | .380/9.65 | -----     | ----- |
| -107                  | 20           | 20            | 9           | .900/22.86  | 1.032/26.21          | .066/1.68            | .766/19.46           | .380/9.65 | -----     | ----- |
| 68664-108             | 14           | 13            | 6           | .600/15.24  | .732/18.59           | .266/6.76            | -----                | .130/3.30 | 1         | ----- |
| 68664-132             | 32           | 32            | 15          | 1.500/38.10 | 1.632/41.45          | .066/1.68            | 1.366/34.70          | .325/8.26 | -----     | ----- |

|                      |  |                                       |  |                     |  |              |  |                          |  |
|----------------------|--|---------------------------------------|--|---------------------|--|--------------|--|--------------------------|--|
| mat'l. code          |  | surface                               |  | tolergrnce          |  | projection   |  | product family           |  |
| NOTE 1 & 3           |  | ISO 1302                              |  | ISO 406             |  |              |  | HEADER                   |  |
| lit ecn no l dr date |  | tolerances unless otherwise specified |  | ISO 1101            |  |              |  | title                    |  |
| H                    |  | angles                                |  | XXE.01/XXH.3        |  | INCH/MM      |  | STRAIGHT HEADER FOR      |  |
|                      |  | 0° ±.2°                               |  | XXE.005/XXH.13      |  | scale: 2.5:1 |  | ROUND WIRE RECEPTACLE    |  |
|                      |  | linear                                |  | XXXE.0020/XXXH.0051 |  |              |  | dwg no                   |  |
|                      |  | dr                                    |  | M. CORNMANN         |  |              |  | 68664                    |  |
|                      |  | engr                                  |  | M. LEACH            |  |              |  | sheet 6 of 6 size        |  |
|                      |  | chr                                   |  | M. LEACH            |  |              |  | A3                       |  |
|                      |  | pppd                                  |  | M. LEACH            |  |              |  | type                     |  |
| sheet                |  | revision                              |  | 9/18/90             |  |              |  | Product Customer Drawing |  |
| index                |  | sheet                                 |  |                     |  |              |  |                          |  |