

Alu-Topline

Enclosure profiles, horizontally-divided



ATPH 1850-0150

Order no.: 92850150

* = Available on request.

Characteristics

Colour of enclosure group

Natural-coloured anodised

Protection class

IP 54

Enclosure Material

Extruded profiles: Al Mg Si 0.5 anodised; plastic lid: ABS; for details see Technical Information

Scope of delivery

Enclosure profile, 2 parts

Note

Upgradable to IP 54 by fitting AT...DI.

Special lengths on request.

Important!

To compensate for pressure when temperatures change and cause moisture in the enclosure, we recommend that you use a pressure compensation element.

» Additional information

Technical documentation / Downloads

Technical drawings

Product information

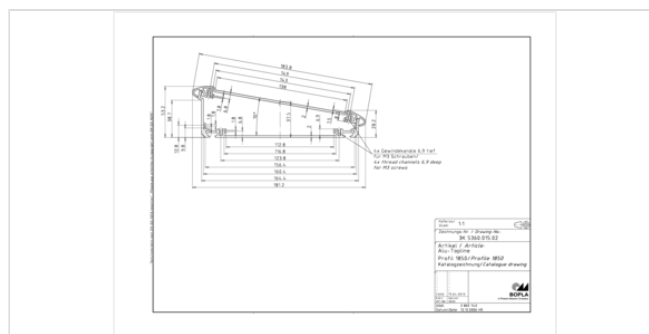
24.08.2020

Dimensions

Dimensions

181.2 x 53.2 x 150 mm

Product drawing



3D product data in STEP format: Registration necessary
Drawing for mechanical processing: 92850150 ATPH-1850-0150-G.dxf (424.9 KB)

Alu-Topline GB.pdf (1.5 MB)

Milling contours are shown here as a DXF file. (Sub D, USB, HDMI, cable glands, ...)

Product drawing in PDF format: 92850150 ATPH-1850-0150.pdf (41.9 KB)

Product drawing in DXF format: 92850150 ATPH-1850-0150.dxf (490.4 KB)

Matching accessories



End cover

92050024 ATD 1850-7024
92050005 ATD 1850-9005

For ATPH 1850
For ATPH 1850

Graphite grey
Black



Seals for ingress protection IP 54

92050000 AT 1850 DI

For ATPH 1850



Wall fastening, aluminium

92800150 AT 1800-0150 WB

For ATPH-0150



Universal wall fitting

92815024 AT 0150-7024 UWB

For ATPH-0150

Graphite grey



Insulating strip for PCB mounting on the profile

92000100 AT-IS 00020

Length: 101,5 mm



Rubber feet

84006700 AB - GF

Polyurethane, 65-75 Shore

Black