

Cable sockets and plugs for self-assembly

Product features

- connection of
 - inductive or capacitive proximity switches
 - photoelectric barriers
 - pressure-operated switches etc.

Variations

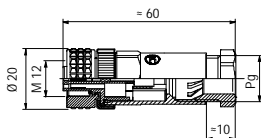
- cable sockets and plugs without LED (housing black, PG7 and PG9)
- cable sockets and connectors, LED insertable (accessories), (housing transparent/topas, PG7)
- cable sockets and connectors with plastic coupling nut/thread (housing black, PG7)

Basic data

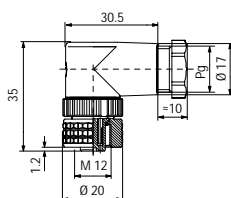
- protection class IP 67 (IEC 60529)
- strain relief by means of clamping cage
- type of termination screw

Further information

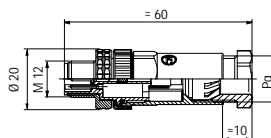
see technical data in the catalog
Circular connectors for automation technique DS 280 490-450.
For tailor-made systems, see page 6



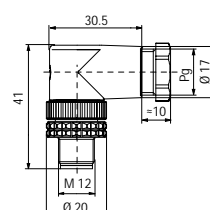
ELKA...PG...



ELWIKA...PG...



ELST...PG...



ELWIST...PG...

Cable accommodation: PG7: \varnothing 4...6 mm (0,160...0,235 inches)
PG9: \varnothing 6...8 mm (0,24...0,315 inches)

Plastic-coupling nut/thread: standard with type 4012 K PG 7; for all other types on demand.

poles	socket		plug		operating voltage	comments	
	straight ELKA	angled ELWIKA	straight ELST	angled ELWIST			
4	4012 PG 7	933 139-100	933 172-100	933 098-100	UC 250 V (\approx) ¹⁾	housing transparent, accessories LED insert ²⁾ plastic-coupling nut/thread	
	4012 PG 7 TO	933 210-199	933 173-199				
	4012 K PG 7	933 725-100	933 726-100	933 727-100			933 728-100
	4012 PG 9	933 169-100	933 174-100	933 162-100			933 166-100
5	5012 PG 7	933 170-100	933 175-100	933 163-100	UC 50 V (\approx)		
	5012 PG 9	933 171-100	933 176-100	933 164-100		933 168-100	

¹⁾ operating voltage without LED insert, type ELKA 4012 PG 7 TO and ELWIKA 4012 PG 7 TO

²⁾ LED insert PNP/normally open 933 405-001 E 2 LED PNP (DC 10...30 V)
LED insert NPN/normally open 933 404-001 E 2 LED NPN (DC 10...30 V)

Example for placing orders: 933 139-100 ELKA 4012 PG7