

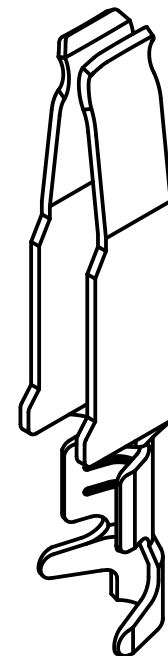
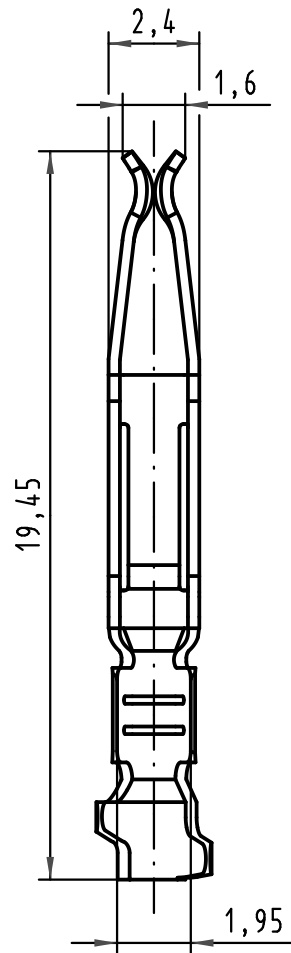
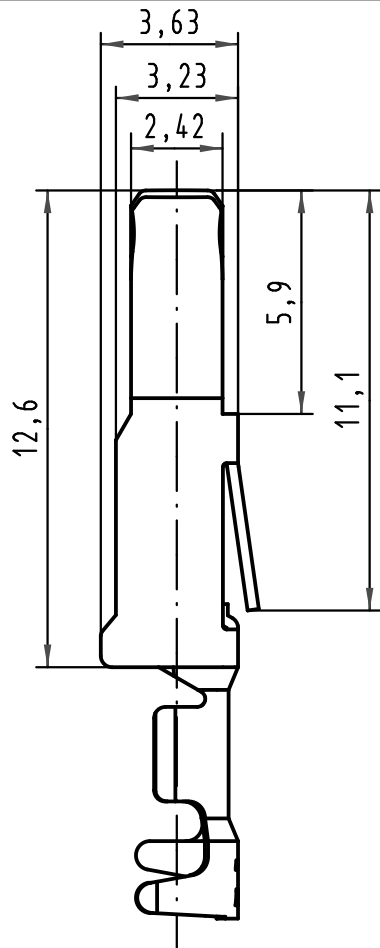
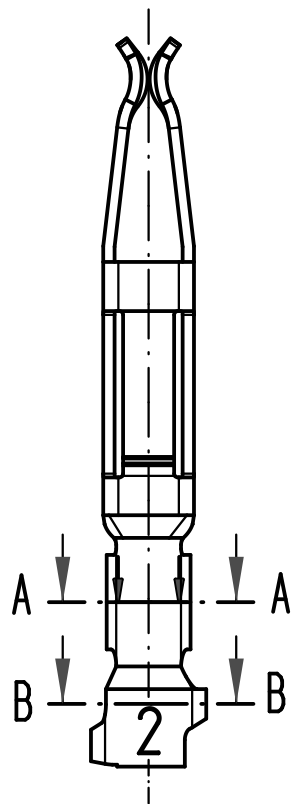
1 2 3 4 5 6

A

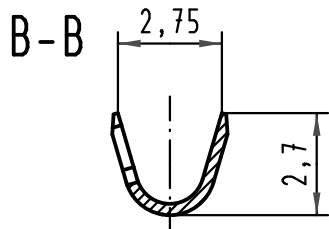
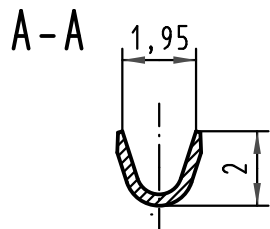
B

C

D



09 06 000 84 <u>8</u> 1	2
09 06 000 84 <u>7</u> 1	1
Bestell-Nr. part-no.	Anforderungsstufe nach IEC performance level acc.to IEC



All Dimensions in mm Original Size DIN A 4			Techn. Character. <i>complementary IEC 60603-2</i>		Nicht tolerierte Maßel Free size tolerances <i>complementary IEC 60603-2</i>	
			Dat.	Name	Maßstab/Scale 5 : 1	Bauform/type F-C crimp Federkontakt Crimpkontur 2 für 0,14 - 0,56mm ² Einzelkontakt female contact crimp contour 2 for 0,14 - 0,56mm ² single contact
			Detail.	17.01.06 Leh.		
			Insp.	17.01.06 Ge.		
35206	23.06.08	Hage.	Stand.			
34657	21.08.07	Hage.	HARTING Electronics GmbH & Co. KG			TB 09 06 000 84x1
33227			D-32339 ESPELKAMP			
Mod.	Dat.	Name				
					Sub.	Blatt/ page