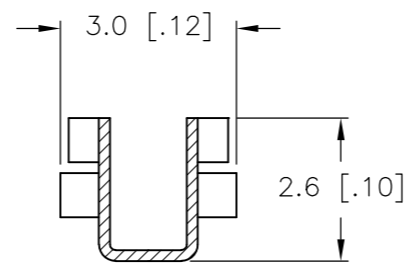
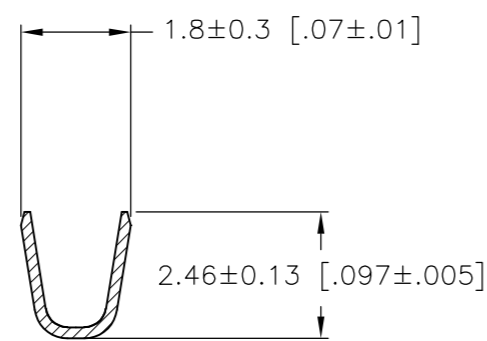
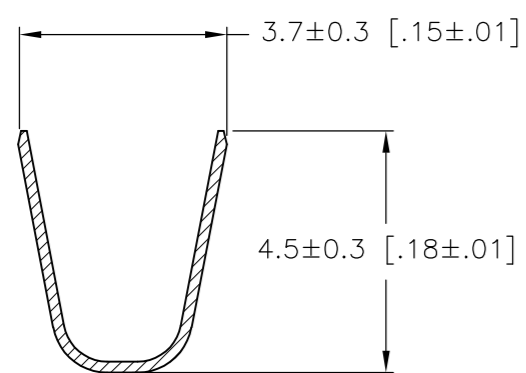
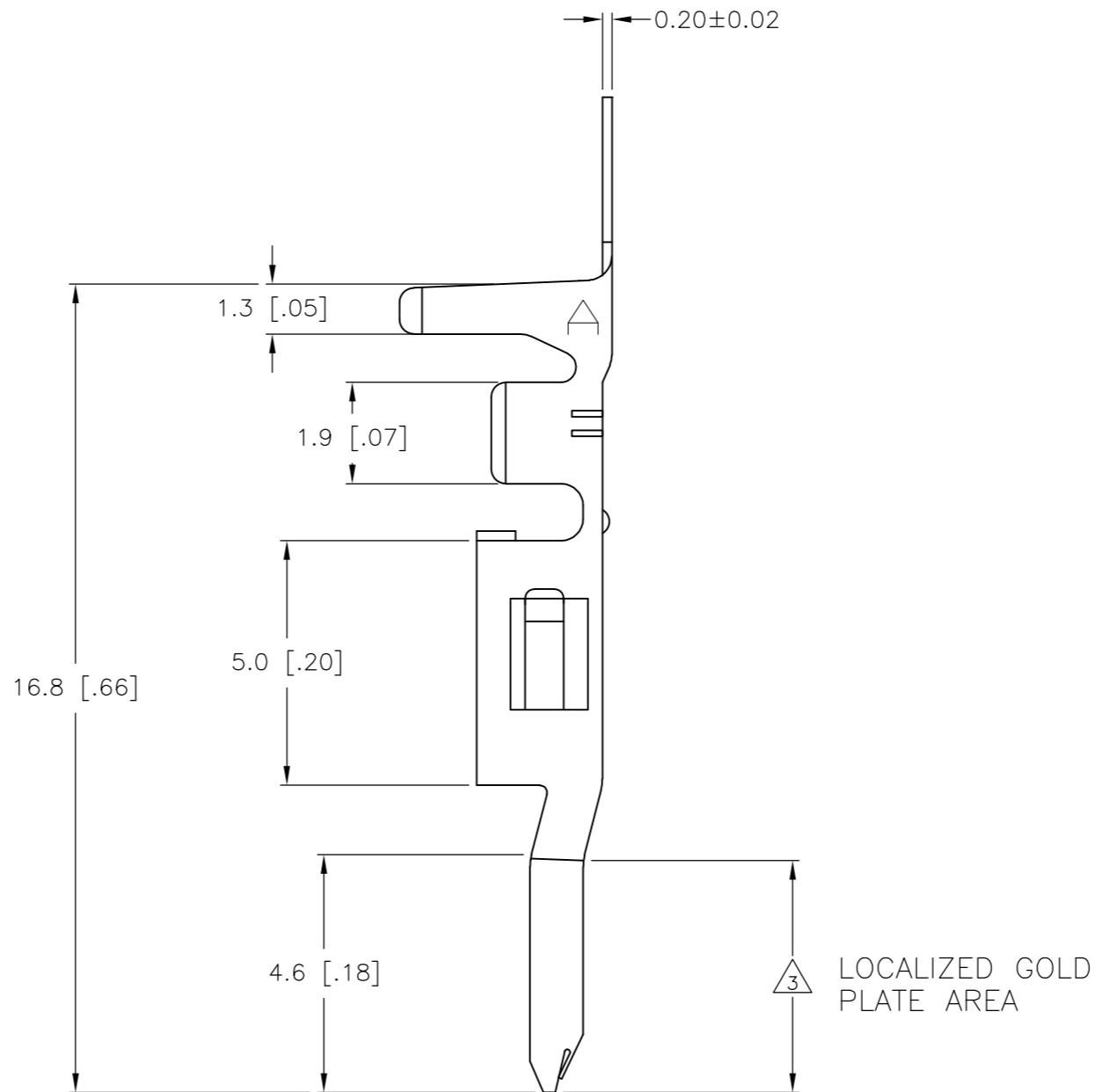
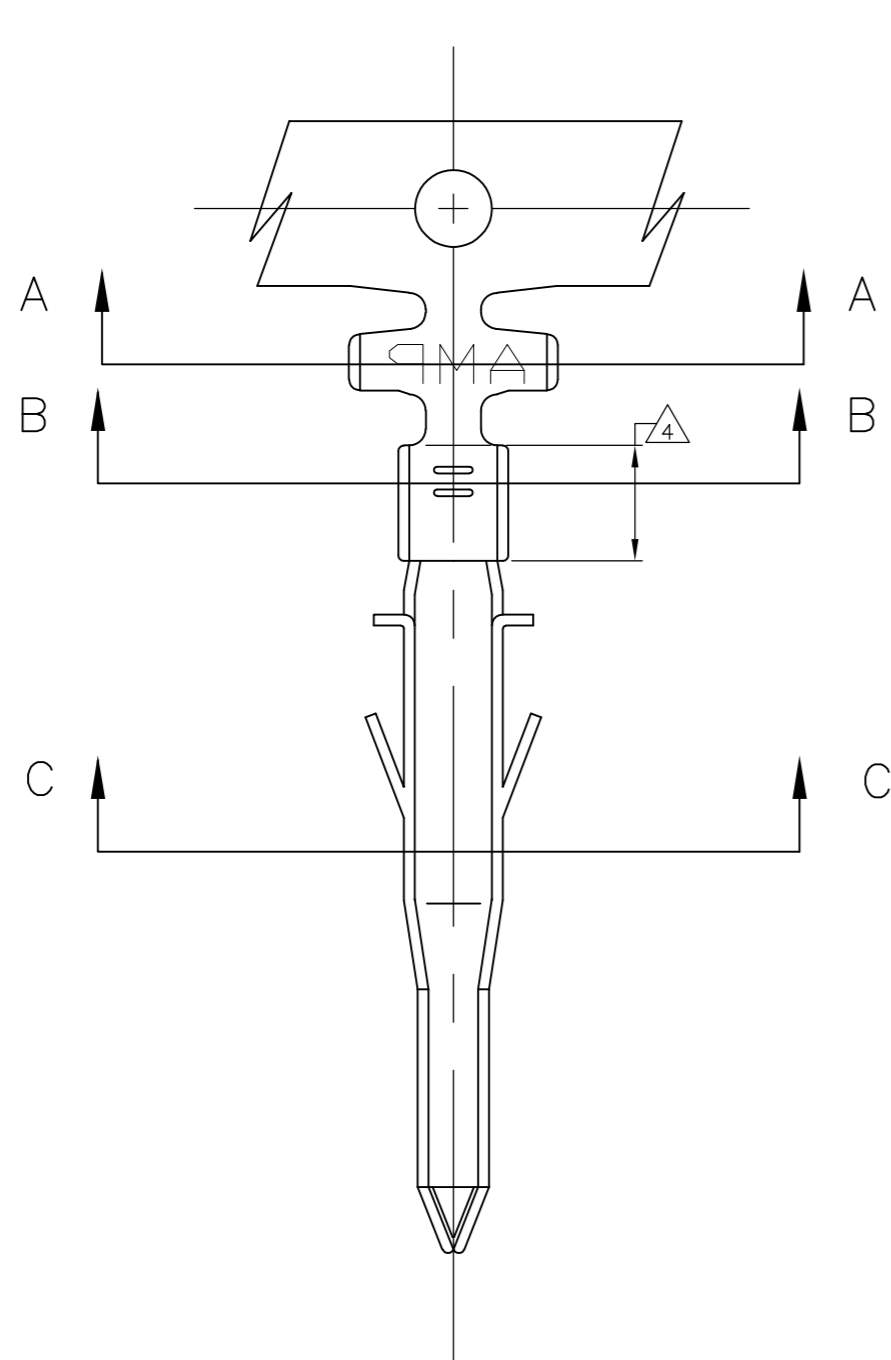


THIS DRAWING IS UNPUBLISHED. RELEASED FOR PUBLICATION  
 © COPYRIGHT BY TYCO ELECTRONICS CORPORATION. ALL RIGHTS RESERVED.

LOC	DIST	REVISIONS					
CM	00	P	LTR	DESCRIPTION	DATE	DWN	APVD
		H		REVISED PER ECO-09-007454	02APR09	JR	KR

- 1 WIRE RANGE: 0.2-0.82mm<sup>2</sup> (24-18 AWG)
- 2 INSULATION RANGE: 1.50 - 3.10 DIA.
- 3 FINISH: 0.76µm MINIMUM GOLD IN LOCALIZED GOLD PLATE AREA OVER 1.27µm MINIMUM NICKEL.
- 4 FINISH: 2.54µm MINIMUM PRE-TIN IN LOCALIZED TIN PLATE AREA.



SECTION C-C

SECTION A-A

SECTION B-B

**METRIC**

3 4	PHOS. BRZ.	794955-4
PRE-TIN	PHOS. BRZ.	794955-3
3 4	BRASS	794955-2
PRE-TIN	BRASS	794955-1
FINISH:	MATERIAL:	PART NO.

THIS DRAWING IS A CONTROLLED DOCUMENT.		DWN S. HAMM 07-SEP-2001	Tyco Electronics Corporation Harrisburg, Pa 17105-3608	
DIMENSIONS: mm [INCHES]		CHK D. COLEY 07-SEP-2001	NAME D. COLEY	
TOLERANCES UNLESS OTHERWISE SPECIFIED: 0 PLC ± 1 PLC ± 0.25 [.010] 2 PLC ± 0.15 [.006] 3 PLC ± 0.050 [.0020] 4 PLC ± ANGLES ±		APVD D. COLEY 07-SEP-2001	PRODUCT SPEC	
MATERIAL		APPLICATION SPEC	TERMINAL PIN VAL-U-LOK(TM)	
FINISH		WEIGHT	SIZE A2	CAGE CODE 00779
CUSTOMER DRAWING		SCALE 10:1	DRAWING NO. C=794955	RESTRICTED TO -
		SHEET 1	OF 1	REV H