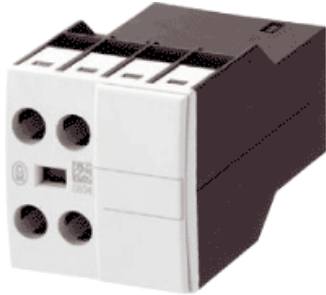
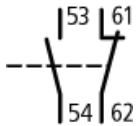


Type: **DILA-XHI1**
 Article No.: **276421**



Ordering information			
Connection technique			Screw terminals
Contacts M = Make M E = Early-make			1 M
Contacts B = Break B L = Late-break			1 B
Rated operational current AC-15 220 V 230 V 240 V	I_e	A	6
Rated operational current AC-15 380 V 400 V 415 V	I_e	A	3
Conventional current, open at 60 °C	I_{th}	A	10
Distinctive number and version of combination DILA(C)-40			51E
Distinctive number and version of combination DILA(C)-31			42
Distinctive number and version of combination DILA(C)-22			33

Contact sequence



Note concerning the product

Interlocked opposing contacts

Notes concerning the product group

Version E combinations correspond to EN 50011 and are to be preferred; other combinations correspond to EN 50005

Auxiliary contacts			
Zwangsführung der Schaltglieder innerhalb eines Hilfsschalterbausteins (nach IEC 60947-5-1 Anhang L)			Yes
Break contact (not late-break contact) suitable as a mirror contact (to IEC/EN 60947-4-1 Annex F)			DILM7 – DILM32
Rated impulse withstand voltage	U_{imp}	V AC	6000
Overvoltage category/pollution degree			III/3
Rated insulation voltage			

AC	U_i	V AC	690
Rated operational voltage	U_e	V AC	500
Safe isolation to VDE 0106 Part 101 and Part 101/A1			
between coil and auxiliary contacts		V AC	400
between the auxiliary contacts		V AC	400
Rated operational current			
AC-15			
230 V	I_e	A	6
380/415 V	I_e	A	3
DC-13 L/R f 15 ms			
24 V	I_e	A	10
60 V	I_e	A	6
110 V	I_e	A	3
220 V	I_e	A	1
Conv. thermal current	I_{th}	A	10
Control circuit reliability (at $U_e = 24$ V DC, $U_{min} = 17$ V, $I_{min} = 5.4$ mA)	Failure rate	»	-8, < 1 one failure at 100 million operations
Component lifespan			
at $U_e = 230$ V, AC-15, 3 A	Operations	$\times 10^6$	1.3
Short-circuit rating without welding			
max. fuse		A gG/gL	10
Notes			
			Making and breaking conditions to DC-13, time L/R constant as stated See "Fuses" overlay for time/current characteristic on request not with DIL...-XHIV and DIL...-XHICV

Moeller GmbH, Hein-Moeller-Str. 7-11, D-53115 Bonn
E-Mail: catalog@moeller.net, Internet: www.moeller.net, <http://catalog.moeller.net>
Copyright 2005 by Moeller GmbH. Subject to modifications. HPL-C2005GB-INT V3.0